

Facades available:	
Lachlan, Barrington, Flinders	
Cooper, Nepean, Austin	
Overall home width	13.79m
Overall home length	23.15m

Residence	227.5m ²	24.5sq
Garage	36.4m ²	3.9sq
Porch	5.3m ²	0.6sq
Alfresco	12.9m ²	1.4sq
Total	282m²	30.4sq

FLOORPLAN OPTIONS

We personalise our floorplans. Talk to us about our huge range of ready-to-go design options.

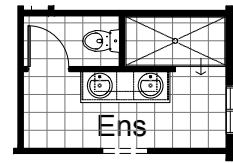
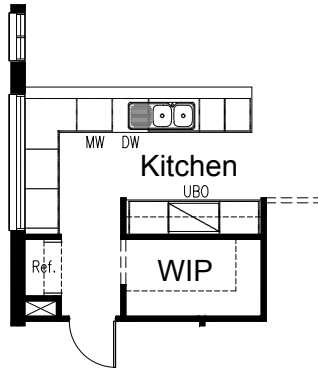
Listed details based on Lachlan facade floorplan (illustrated)

*Copyright conditions. All photos and illustrations are representative only. Floor plans and specifications may be varied by Burbank without notice, the dimensions are diagrammatic only and a Building Contract with final drawings will display correct dimensions and detail. All designs are the property of Burbank and must not be used, reproduced, copied or varied, wholly or in part without written permission from an authorised Burbank representative. Copyright Burbank Australia (NSW) Pty Ltd. ABN 88 610 822 770. NSW BL 295627C ACT BL 2016566.

Call 13 BURBANK
Visit burbank.com.au

OPTION K1

Provide L-shaped Kitchen upgrade option which moves location of double bowl sink with additional bench tops and base cupboards. Kitchen includes 900mm retractable rangehood, 900mm cooktop, 900mm under bench oven, 450mm drawer unit, dishwasher provision, microwave provision with pot drawer, 1No. 900mm base cupboard, 4No. 700mm base cupboards, 1No. 450mm base cupboard, 1No. 900mm corner base cupboard, 2No. 700mm overhead cupboards, 1No. 900mm open shelf above Refrigerator with additional bench top and tiled splashback to suit.

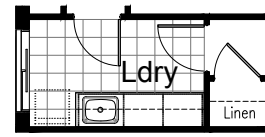
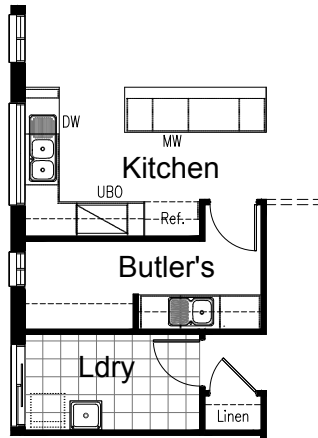


OPTION ENS1

Provide Ensuite upgrade with rearranged layout including enclosed WC with 720mm hinged door, 1582mm vanity with double basins and 1800x900mm tiled shower base.

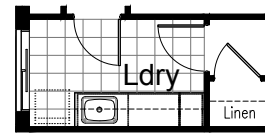
OPTION K2

Provide Kitchen upgrade option which creates a Butler's pantry in lieu of the WIP, moves location of Refrigerator space and creates L-Shaped additional bench tops and base cupboards. Kitchen includes 900mm retractable rangehood, 900mm cooktop, 900mm under bench oven, double bowl sink, 450mm drawer unit, dishwasher provision, microwave provision with pot drawer, 2No. 900mm base cupboards, 1No. 450mm base cupboard, 1No. 150mm base cupboards, 1No. 900mm Corner cupboard, 1No. 800mm overhead cupboard, 1No. 300mm overhead cupboard, 1No. 900mm open shelf above Refrigerator with additional bench top and tiled splashback to suit. Butler's Pantry includes 3No. 700mm base cupboards, 3No. 700mm overhead cupboards, single bowl sink, additional bench top and tiled splashback with 4No. 450mm shelves. Replace AFW1224 with AFW1218 fixed window to Kitchen and provide additional ASW1806 sliding window to Butler's Pantry. Option also reduces width of Laundry by 200mm to accommodate.



OPTION LD1

Provide Laundry upgrade including laminate base cupboards and stainless steel inset trough including 1No. 800mm base cupboard, 2No.700mm base cupboards, 1No. 800mm overhead cupboard, 2No. 700mm overhead cupboards, additional bench top and tiled splashback to suit.

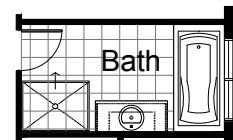
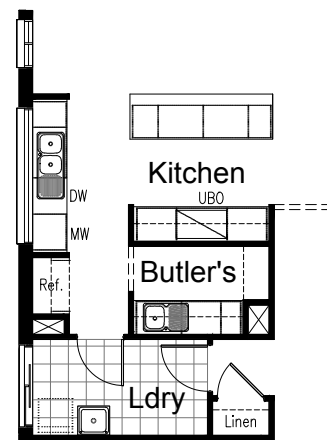


OPTION LD2

Provide Laundry upgrade including laminate base cupboards and stainless steel inset trough including 2No. 900mm base cupboards, 2No. 900mm overhead cupboards, 1No. 400mm full height Broom cupboard, additional bench top and tiled splashback to suit.

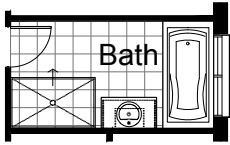
OPTION K3

Provide Kitchen option providing Butler's Pantry in lieu of standard Walk-in Pantry. Option includes 900mm retractable rangehood, 900mm cooktop, 900mm under bench oven, 450mm drawer unit, dishwasher provision, microwave provision with pot drawer, 1No. 900mm base cupboard, 2No. 800mm base cupboards, 2No. 700mm base cupboards, 1No. 450mm base cupboard, 1No. 400mm base cupboard, 2No. 700mm overhead cupboards, 1No. 900mm open shelf above Refrigerator. Butler's Pantry includes 1No. 800mm base cupboard, 1No. 700mm base cupboard, 1No. 350mm base cupboard, 1No. 800mm overhead cupboard, 1No. 700mm overhead cupboard, 1No. 350mm overhead cupboard, additional single bowl sink, additional bench top and tiled splashback to suit. Option also reduces width of Laundry by 200mm to accommodate.



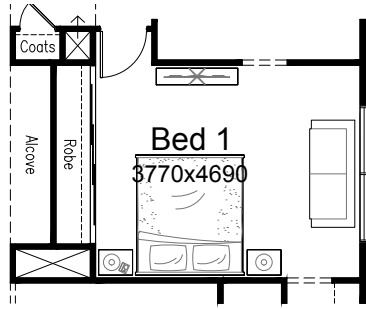
OPTION IP1

Provide Bath option by removing Linen cupboard to Passage, increasing tiled shower base to 1200mm x 900mm and replace 982mm vanity with 1282mm vanity.



OPTION IP2

Provide Bath option by removing Linen cupboard to Passage and increasing tiled shower base to 1500mm x 900mm.



OPTION IP3

Provide standard Robe with sliding doors to Bed 1 in lieu of Walk-in Robe. Also creates Alcove to Entry with bulkhead.

OPTION EP1

Provide floor plan option with mirrored rear section of the home.

