

**Facades available:**

Callington, Harrogate, Kent	
Lancaster, Sheffield, Swansea	
Wiltshire, Eastwood	
<b>Overall home width</b>	<b>11.15m</b>
<b>Overall home length</b>	<b>18.83m</b>

Residence	136.5m <sup>2</sup>	14.7sq
Garage	36.6m <sup>2</sup>	3.9sq
Porch	5.3m <sup>2</sup>	0.6sq
<b>Total</b>	<b>178.4m<sup>2</sup></b>	<b>19.2sq</b>

**FLOORPLAN OPTIONS**

We personalise our floorplans. Talk to us about our huge range of ready-to-go design options or simply visit [www.burbank.com.au/south-australia](http://www.burbank.com.au/south-australia) for more details.

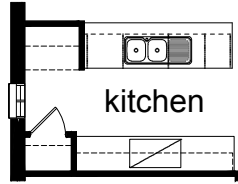
Listed details based on Sheffield facade floorplan (illustrated)

\*Copyright conditions. All photos and illustrations are representative only. Floor plans and specifications may be varied by Burbank without notice, the dimensions are diagrammatic only and a Building Contract with final drawings will display correct dimensions and detail. All designs are the property of Burbank and must not be used, reproduced, copied or varied, wholly or in part without written permission from an authorised Burbank representative. Copyright Burbank Australia (SA) Pty Ltd. ABN 96 165 533 406. BLD 266709.

**Call 13 BURBANK**  
**Visit [burbank.com.au](http://burbank.com.au)**

**OPTION K1**

Provide Kitchen upgrade including relocation of ref. space with laminated cabinet above, microwave provision with pot drawer under, 2no. 900mm base cupboards, 2no. 900mm overhead cupboards, 900mm underbench oven, 900mm hotplate with 900mm retractable rangehood above. Change extent of benchtop and tiled splashback to suit.



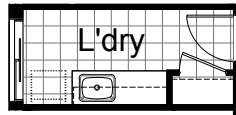
**OPTION G1**

Provide extension to Garage to create additional Storage area. Increases area by 4.58m<sup>2</sup>. Increases width by 850mm.



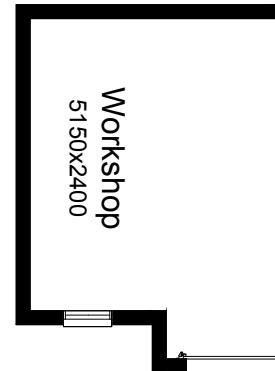
**OPTION LD1**

Provide prefabricated laminated laundry trough cabinet with insert trough including additional benchtop 2no. 800mm overhead, 2no. 800mm base cupboards with tiled splash back between in lieu of standard trough.



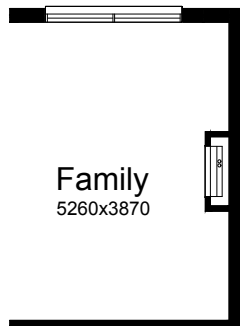
**OPTION G2**

Provide extension to Garage to create Workshop area including additional window to suit. Increases width by 2400mm. Increases area by 13.51m<sup>2</sup>.



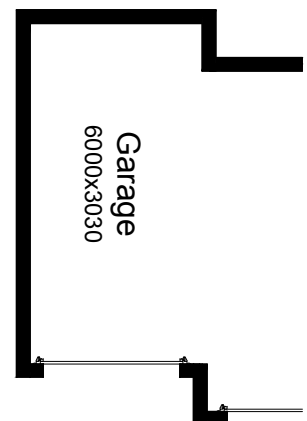
**OPTION IP1**

Provide Real Flame Inspire 900 gas fireplace, 400mm off floor level in a 1400mm x 420mm boxed out plaster wall with a 4 sided black fascia to family room side wall.



**OPTION G3**

Provide triple car Garage including additional roller door to front. Increases area by 20.51m<sup>2</sup>. Increases width by 3120mm.



**OPTION EP1**

Provide Alfresco to rear of dwelling including additional 2no brick piers & earth floor to rear Meals room. Increase area by 14.35m<sup>2</sup>.

