


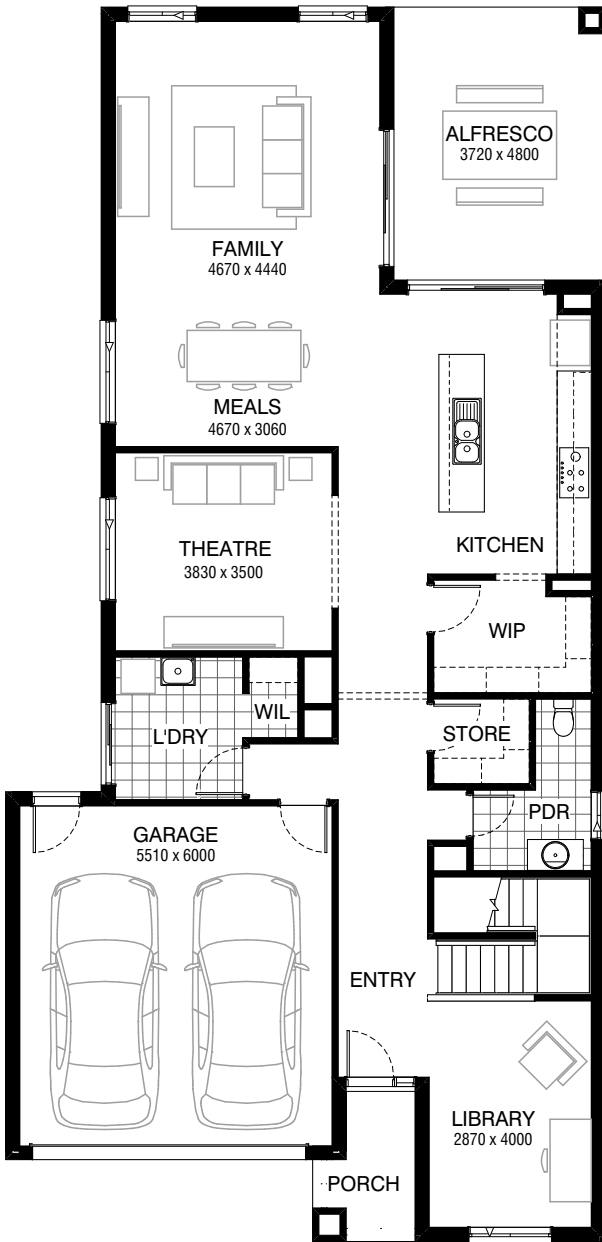


Total squares **40.5sq**

 **5**  **2.5**  **2**



GROUND FLOOR



FIRST FLOOR

FLOORPLAN OPTIONS




All available ready-to-go floorplan options for this design can be viewed on the following pages, or visit www.burbank.com.au.

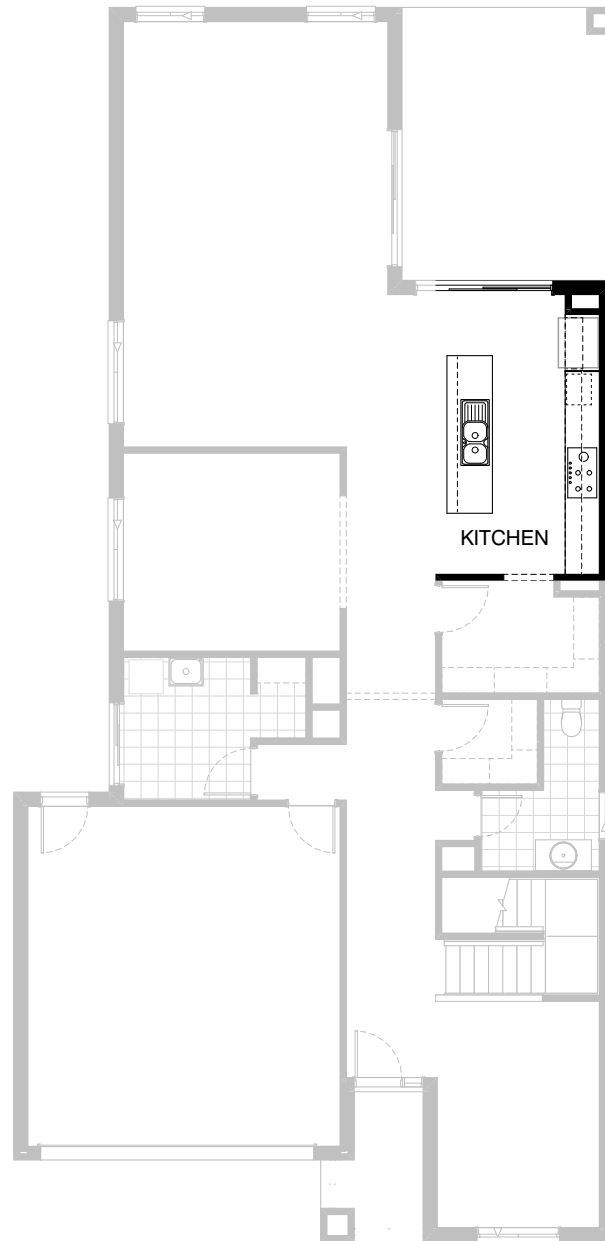
Facades available:

Condor, Matisse, Monet, Aqua,	Residence	317.8m ²	34.2sq
Hester, Metropolitan, Orana,	Garage	36.5m ²	3.9sq
Rainforest	Porch	4.0m ²	0.4sq
Overall home width	10.55m	Alfresco	17.9m ² 1.9sq
Overall home length	21.71m	Total	376.2m² 40.5sq

Listed details based on Condor façade floorplan (illustrated)

FLOORPLAN OPTIONS




 **5**  **2.5**  **2**

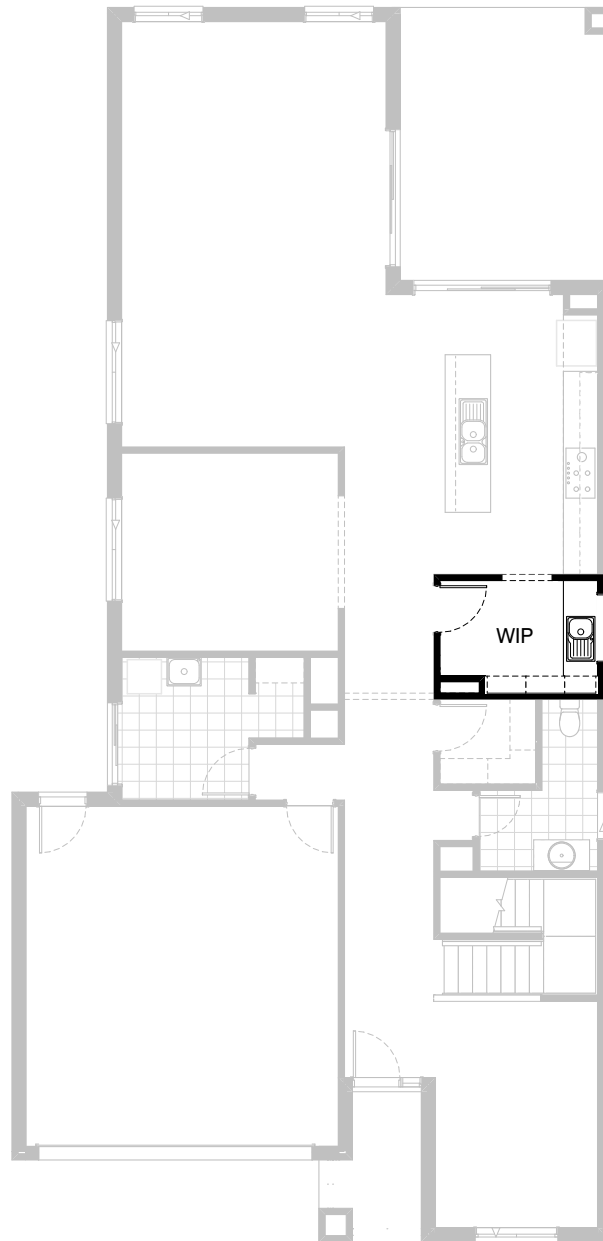


Option K-1

Provide Kitchen Upgrade with laminated open shelf above refrigerator space, 1no. laminated MW. provision with pot drawer below, 2no. 800mm base cabinets, 2no. 700mm base cabinets, 1no. 600mm pot drawers, 2no. 700mm overhead cabinets, 2no. 600mm overhead cabinets, 1no. 450mm drawers and 1no. laminated DW. provision with additional tiled splashback and bench top to suit. With 900mm under bench oven with cooktop & retractable rangehood concealed within 900mm overhead cupboard

FLOORPLAN OPTIONS




 **5**  **2.5**  **2**

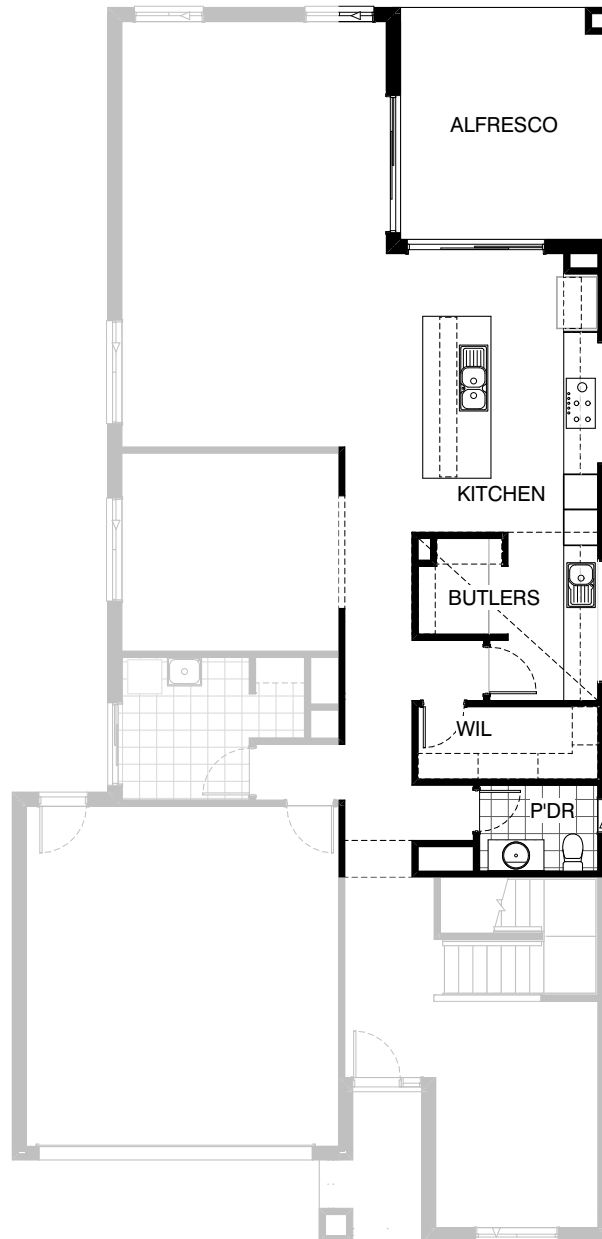


Option K-2

Provide W.I.P Upgrade by relocating plumbing stack, provide additional 1no. 1200mm x 1210mm aluminium fixed window, 1no. 800mm base cabinet 2no. 400mm base cabinets, single bowl sink and wall to wall laminated shelving to suit including additional bench top and tiled splashback to suit

FLOORPLAN OPTIONS

 **5**  **2.5**  **2**



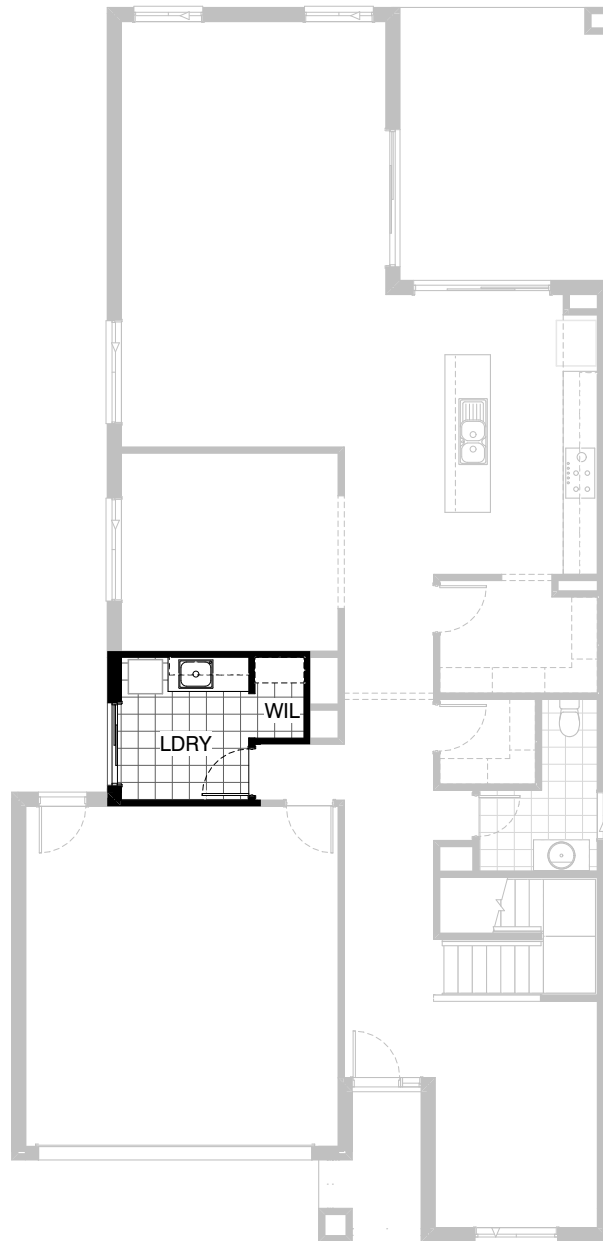
Option K-3

Provide Kitchen Option including removal of Store room and reduce Alfresco by 720mm., Powder and W.I.L reconfiguration, 1800 x 610mm aluminium sliding window to Powder in lieu of 1800x850mm. Additional 450mm wide shelving to W.I.L, 2no. additional 514x2410mm fixed aluminium windows to kitchen splashback. 1200mm wide island bench top to Kitchen, 4no. 800mm base cabinets, 4no. 900mm base cabinets, 1no. 450mm base cabinet, 3no. 800mm overhead cabinets, 3no. 900mm overhead cabinets, 1no. 450mm overhead cabinet, 1no. 450mm drawer unit, 1no. DW. space, 2no. wall oven towers with pot drawers below, open shelf and doors above, 2no. 600mm ovens with 1no. 900mm cooktop & 1no. 900mm retractable rangehood. 1no. refrigerator space with open shelf above. 280mm plaster bulkhead with dropped ceiling to Butlers Pantry including single bowl sink and additional tiled splashback and bench top to suit.

*Copyright conditions. All photos and illustrations are representative only. Floor plans and specifications may be varied by Burbank without notice, the dimensions are diagrammatic only and a Building Contract with final drawings will display correct dimensions and detail. All designs are the property of Burbank and must not be used, reproduced, copied or varied, wholly or in part without written permission from an authorised Burbank representative. Copyright Burbank Australia Pty Ltd. ABN 91 007 099 872. Builders Registration Number CDB-U-52603.

FLOORPLAN OPTIONS




 **5**  **2.5**  **2**

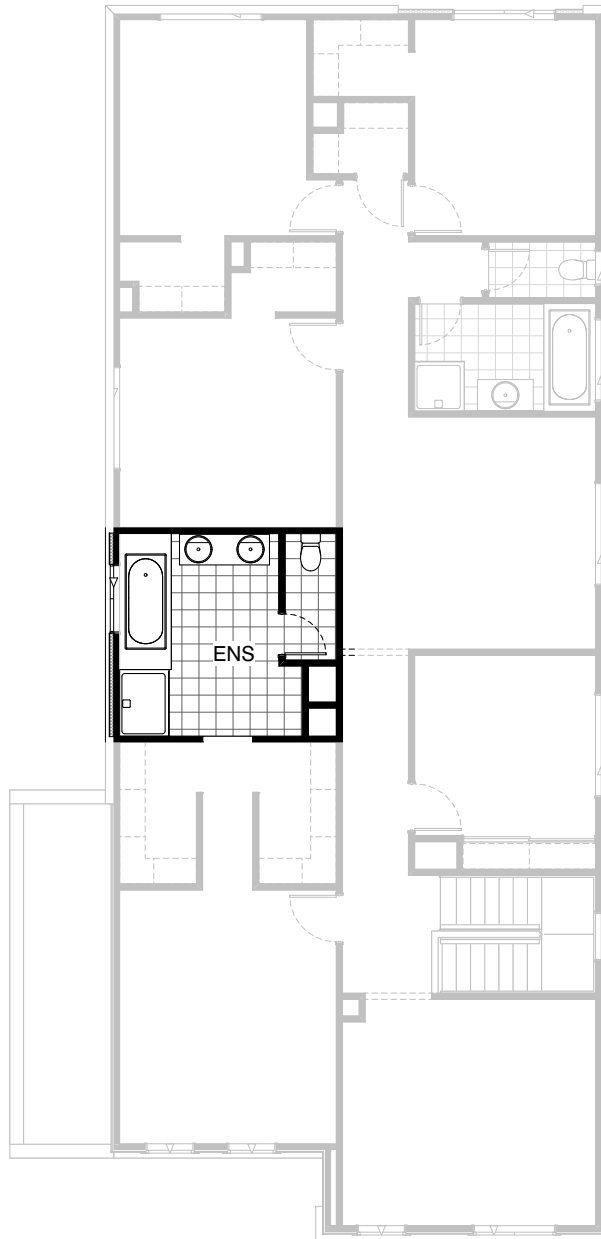


Option LD-1

Provide Laundry Option with additional s.s. inset trough,
1no. 900mm base cupboard, 1no. 450mm base cabinet,
1no. 900mm overhead cupboard and 1no. 450mm
overhead cabinet with additional tiled splashback and
bench top to suit.

FLOORPLAN OPTIONS




 **5**  **2.5**  **2**

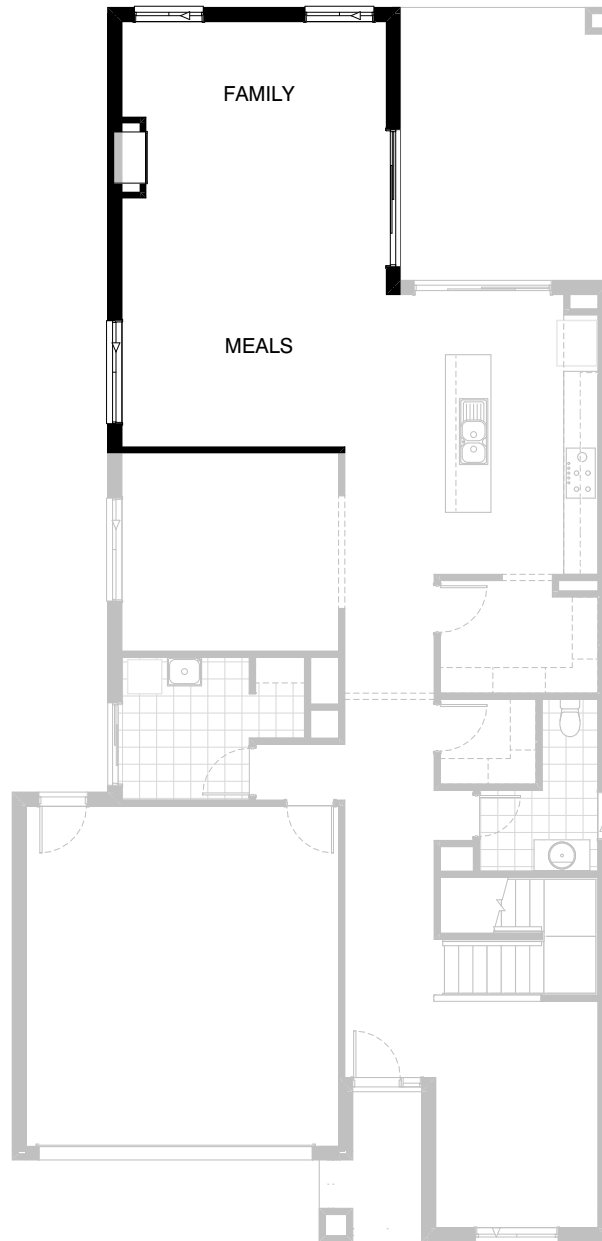


Option ENS-1 FF

Provide Ensuite upgrade with 1no. 900mm x 1200mm polymarble shower base and 1no. 1582mm wide vanity unit with 2no. basins in lieu of standard.

FLOORPLAN OPTIONS




 **5**  **2.5**  **2**

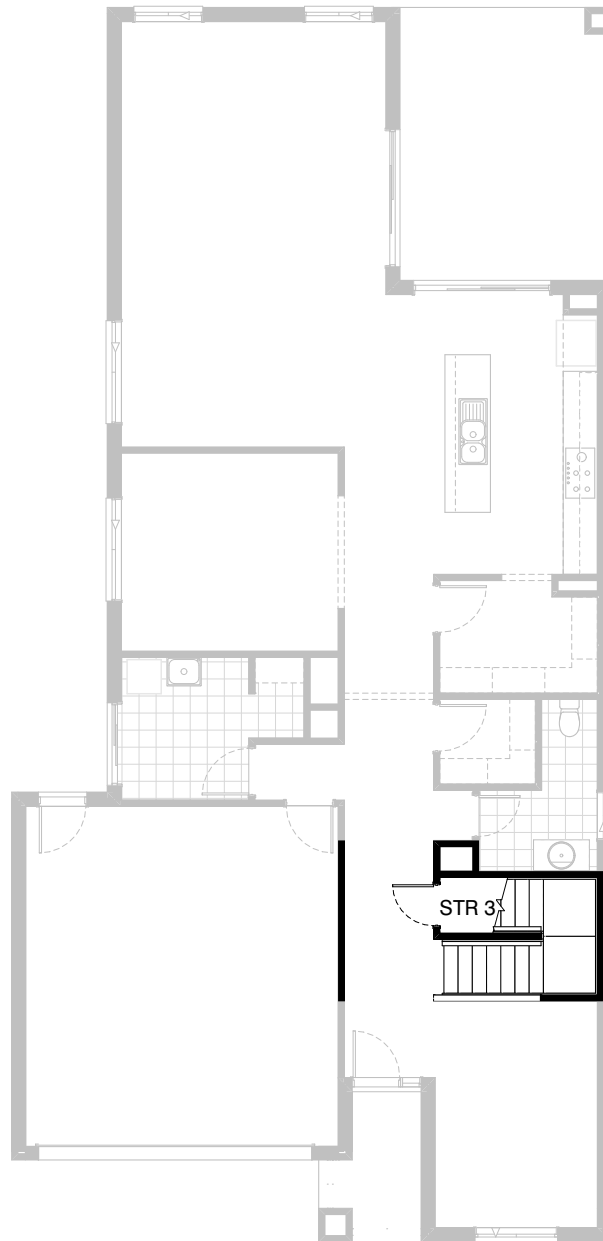


Option IP1-1 GF

Provide Real Flame Inspire 900 gas fireplace, 400mm off floor level in a 1400mm x 420mm boxed out plaster wall with a 4 sided black fascia to Family room side wall.

FLOORPLAN OPTIONS

 **5**  **2.5**  **2**






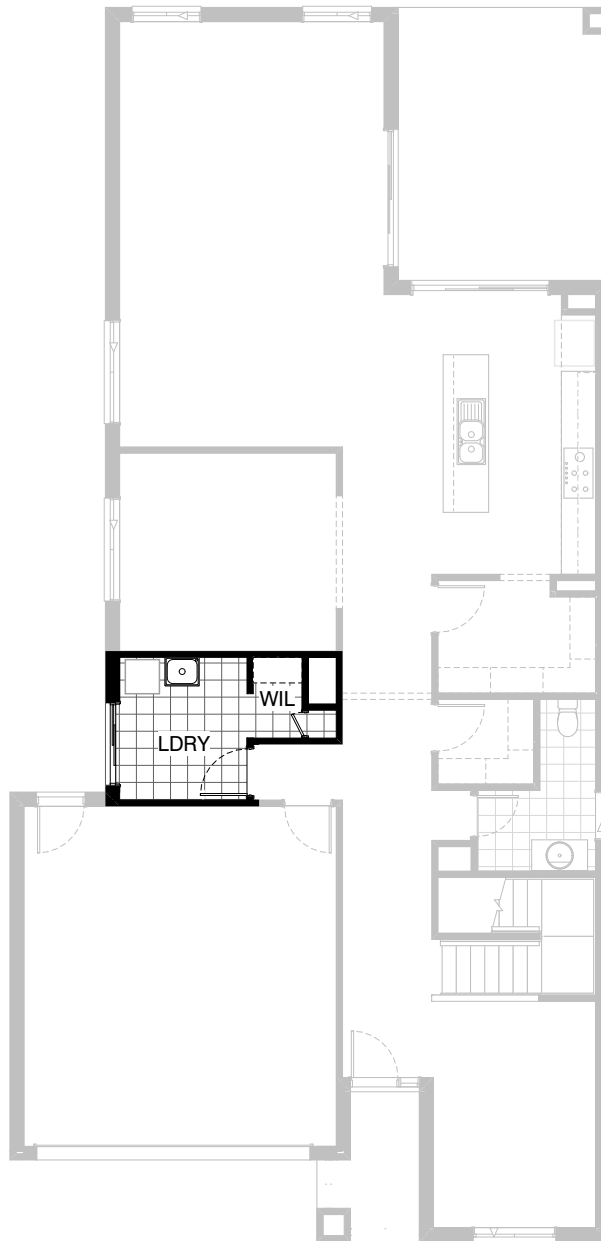
Option IP1-2 GF

Provide Store room below stair including 720mm flush panel hinged door, plaster lined walls and raked plaster ceiling on battens with square set cornice including additional light point.

NOTE: Flooring not included

FLOORPLAN OPTIONS




 **5**  **2.5**  **2**

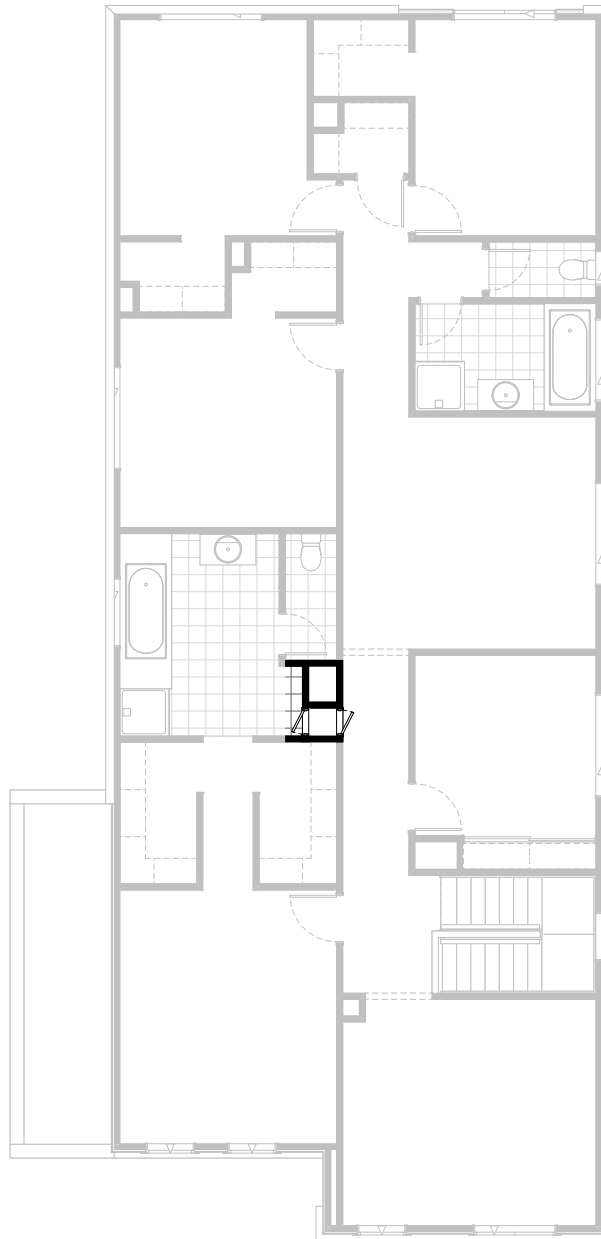


Option IP1-3 GF

Provide Laundry Chute with 1no.
520mm flush panel hinged door to Ground Floor.
2no 900mm x 520mm raw MDF door to First Floor

FLOORPLAN OPTIONS




 **5**  **2.5**  **2**

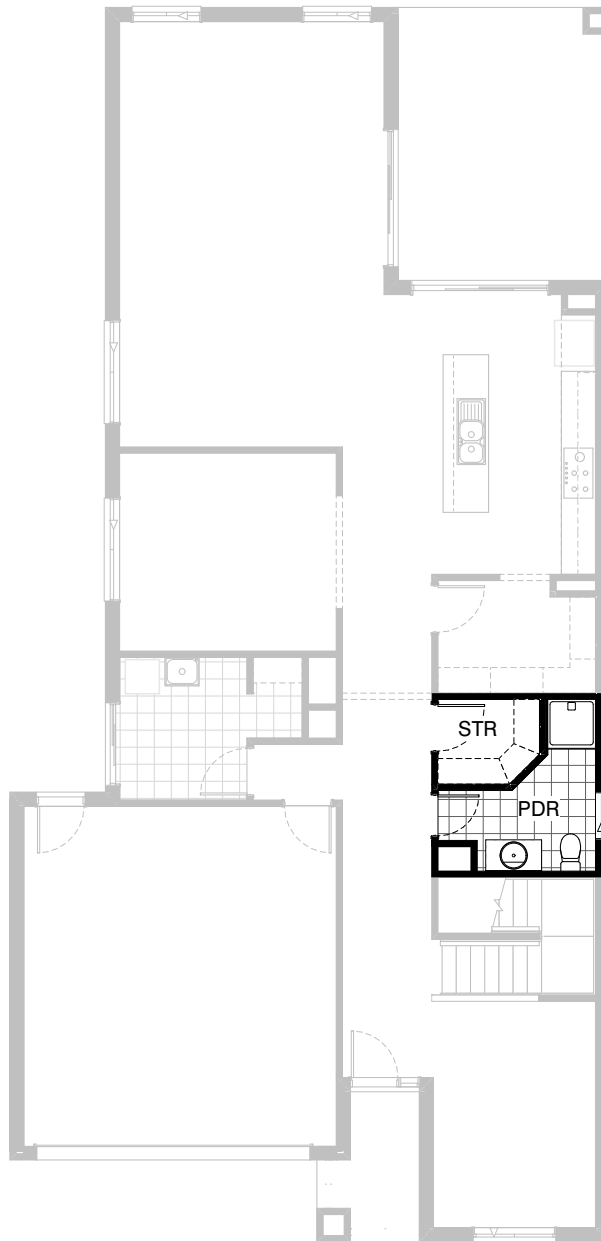


Option IP1-3 FF

Provide Laundry Chute with 1no.
520mm flush panel hinged door to Ground Floor.
2no 900mm x 520mm raw MDF door to First Floor

FLOORPLAN OPTIONS




 **5**  **2.5**  **2**

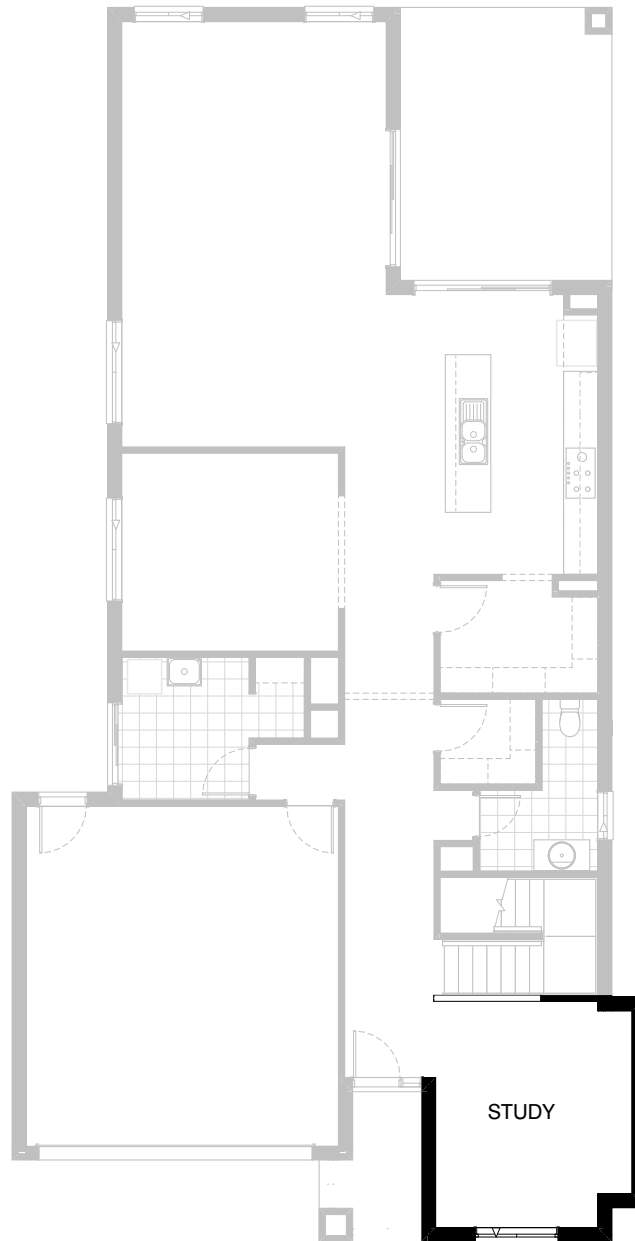


Option IP1-4 GF

Provide Powder upgrade with additional 900mm x 900mm polymarble shower base, relocate toilet and vanity basin to suit and increase store by 100mm and angle stud wall to suit.

FLOORPLAN OPTIONS

 **5**  **2.5**  **2**






Option IP1-5 GF

Provide Study option by extending Study wall width by 600mm with brick parapet flat roof above.

Increases area by 2.08m².
Increases width by 600mm.

FLOORPLAN OPTIONS




 **5**  **2.5**  **2**

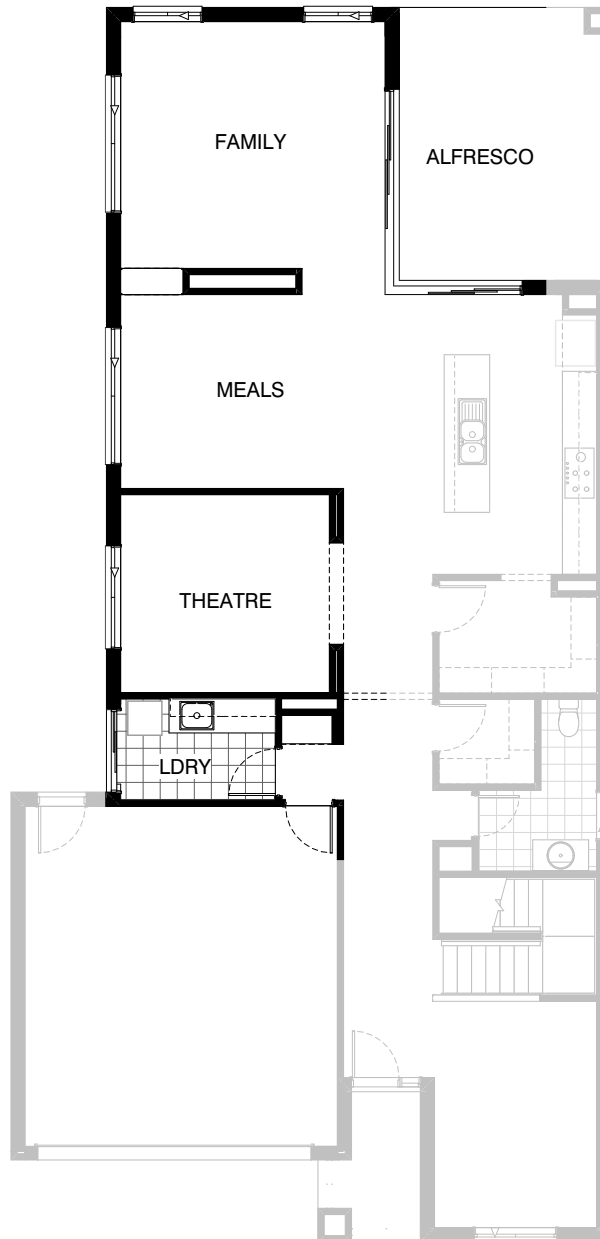


Option IP1-6 GF

Provide Guest Bedroom Option in lieu of Theatre including additional robe sliding doors and plaster lined robe with 1no. hanging rail and shelf. Relocate Laundry and W.I.L with Powder and provide additional 1no. 900mm x 900mm polymarble shower base, 1no. 782mm wide vanity unit in lieu of standard 1no. 982mm wide vanity unit, 1no. 820mm flush panel hinged door in lieu of standard 1no. 720mm door, additional 1no. 720mm cavity sliding door and 1no. 1027mm x 610mm aluminium sliding window in lieu of standard, 1no. 1800mm x 850mm window. Delete Store room and provide additional Linen cupboard with 2no. 620mm flush panel hinged doors with 4no. 450mm deep shelves and additional shelving and 1no. 820mm flush panel hinged door to W.I.L.

FLOORPLAN OPTIONS




 **5**  **2.5**  **2**

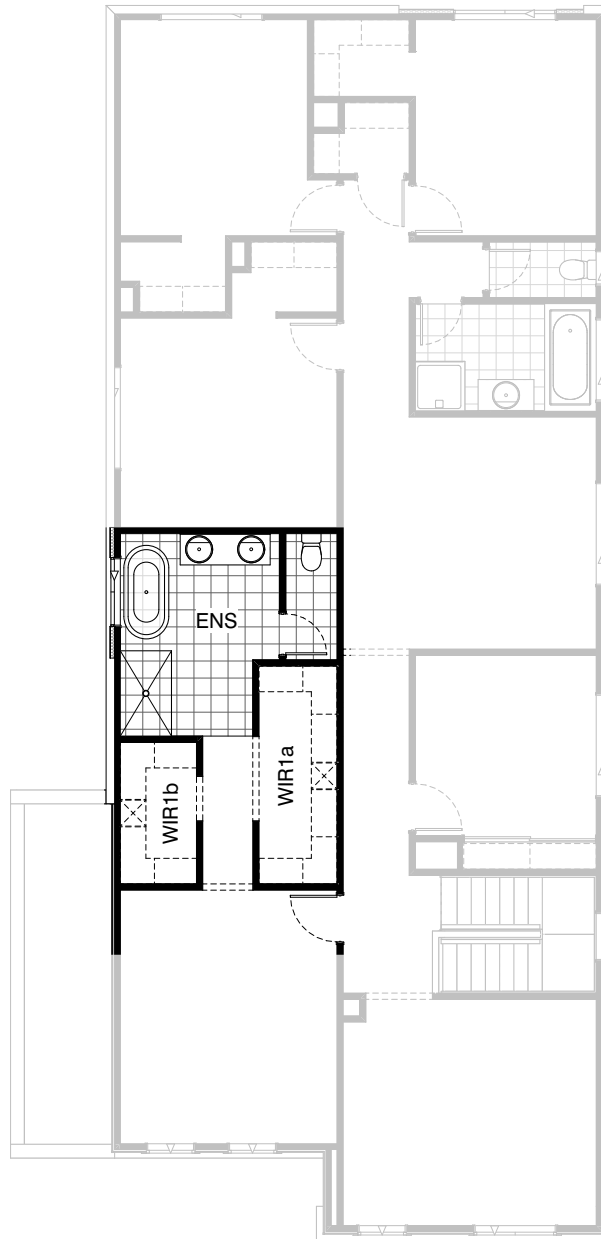


Option IP1-7 GF

Provide floor plan option including re-arrange Laundry and reduce by 730mm providing 2No. 900mm base cabinets, 2no. 900mm overhead cabinets, additional tiled splashback and bench top to suit. Remove W.I.L and provide Alcove with 32mm laminate bench top with 2no. drawers below and 300mm plaster bulkhead over, Theatre relocated 730mm to increase Meals room including 230mm wide entry wall and bulkhead and provide additional central wall with 300mm deep bulkhead and 3no. 450mm floating shelves to separate Meals & Family. Provide ACSD 2424-36 aluminium frame corner sliding door to Kitchen / Family area in lieu of standard sliding doors, 2no. 2057mm x 1450mm aluminium fixed windows to Family and 2no. 2057mm x 2410mm aluminium feature awning windows to Meals & Family.

FLOORPLAN OPTIONS




 **5**  **2.5**  **2**

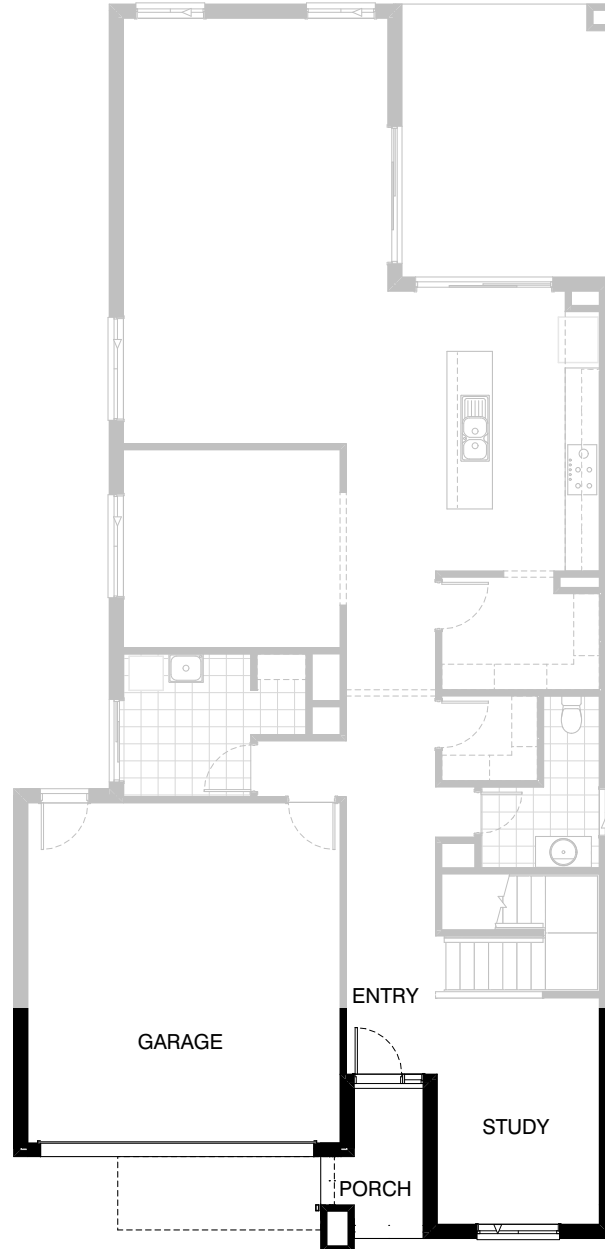


Option IP1-8 FF

Provide Ensuite and W.I.R Option including 1500x900mm tiled shower base, freestanding bath, 1582mm vanity with double basins. Extend W.I.R to meet enclosed WC including additional 450mm wide shelf units to W.I.R's. 450mm shelves with double hanging rails and shoe shelves.

FLOORPLAN OPTIONS




 **5**  **2.5**  **2**

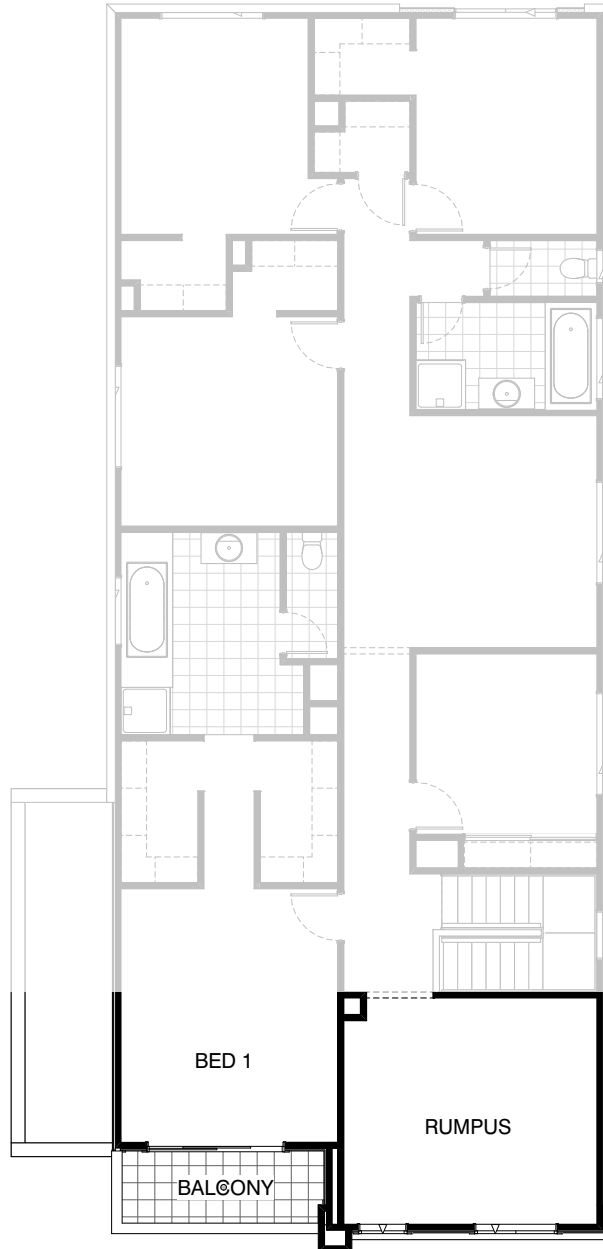


Option BA-1 GF

Provide balcony option.

FLOORPLAN OPTIONS




 **5**  **2.5**  **2**

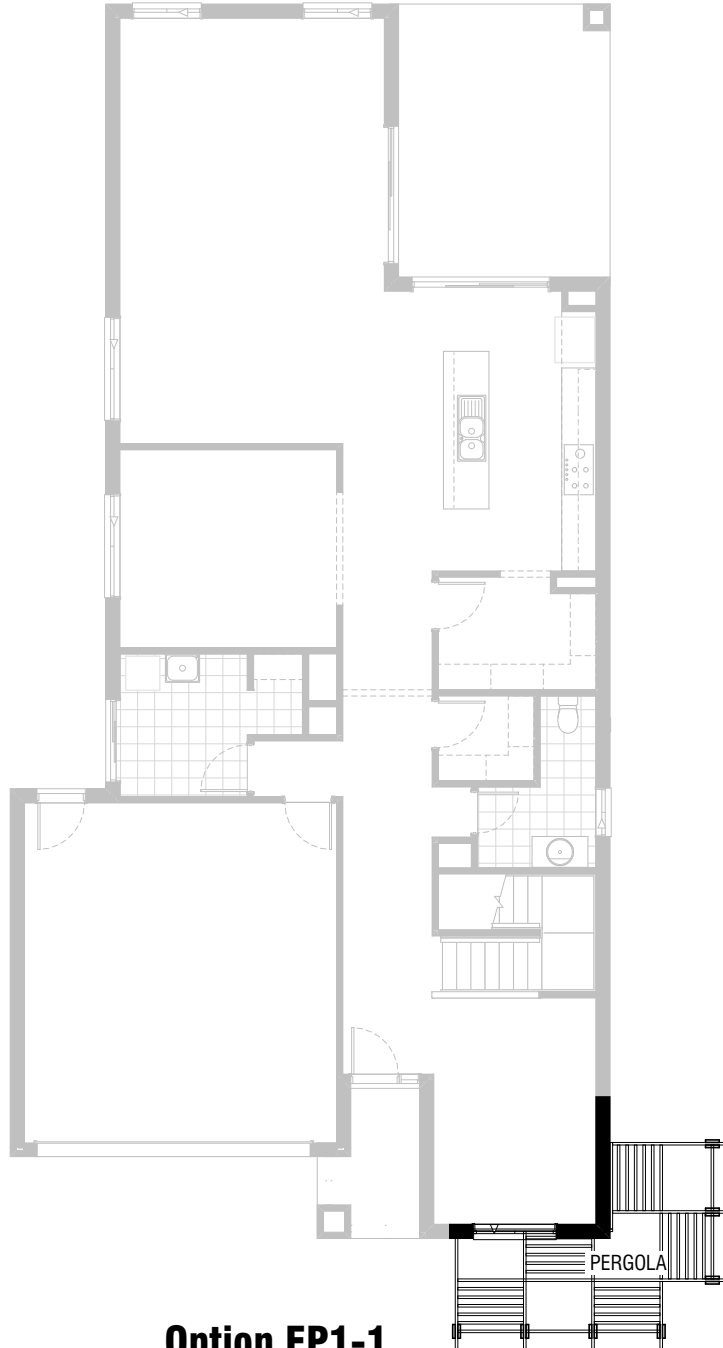


Option BA-1 FF

Provide balcony option.

FLOORPLAN OPTIONS




 **5**  **2.5**  **2**

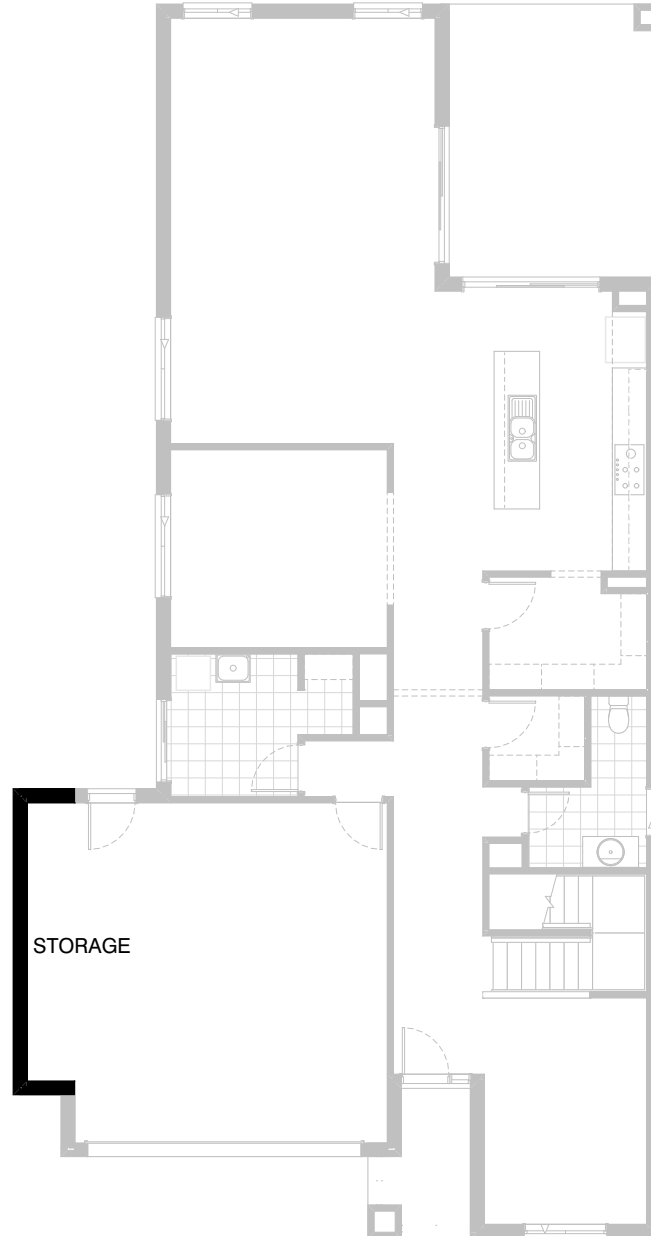


Option EP1-1

Provide Pergola option including 14no. 2/240x45 treated pine timber posts with 240x45 beams and rafters with 5no. rows of 90x45 treated pine battens as shown.

FLOORPLAN OPTIONS




 **5**  **2.5**  **2**



Option G-1

Provide extension to Garage to create additional Storage area.
Increases area by 4.52m².
Increases width by 840mm.

FLOORPLAN OPTIONS




 **5**  **2.5**  **2**

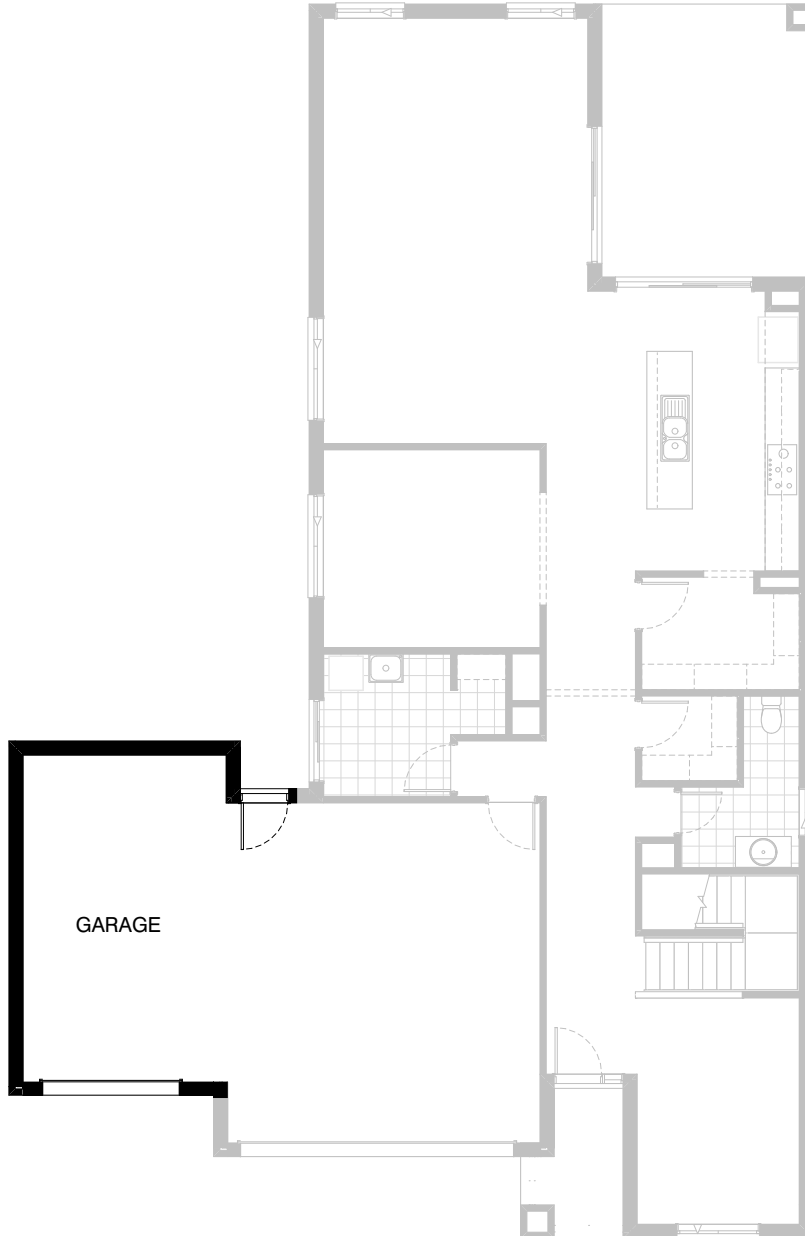


Option G-2

Provide extension to Garage to create Storage area including additional window to suit.
Increases area by 7.76m².
Increases width by 1440mm.

FLOORPLAN OPTIONS

 **5**  **2.5**  **2**



Option G-3

Provide triple car Garage including additional Garage door as per colour selection.
Increases area by 22.82m².
Increases width by 3600mm.