


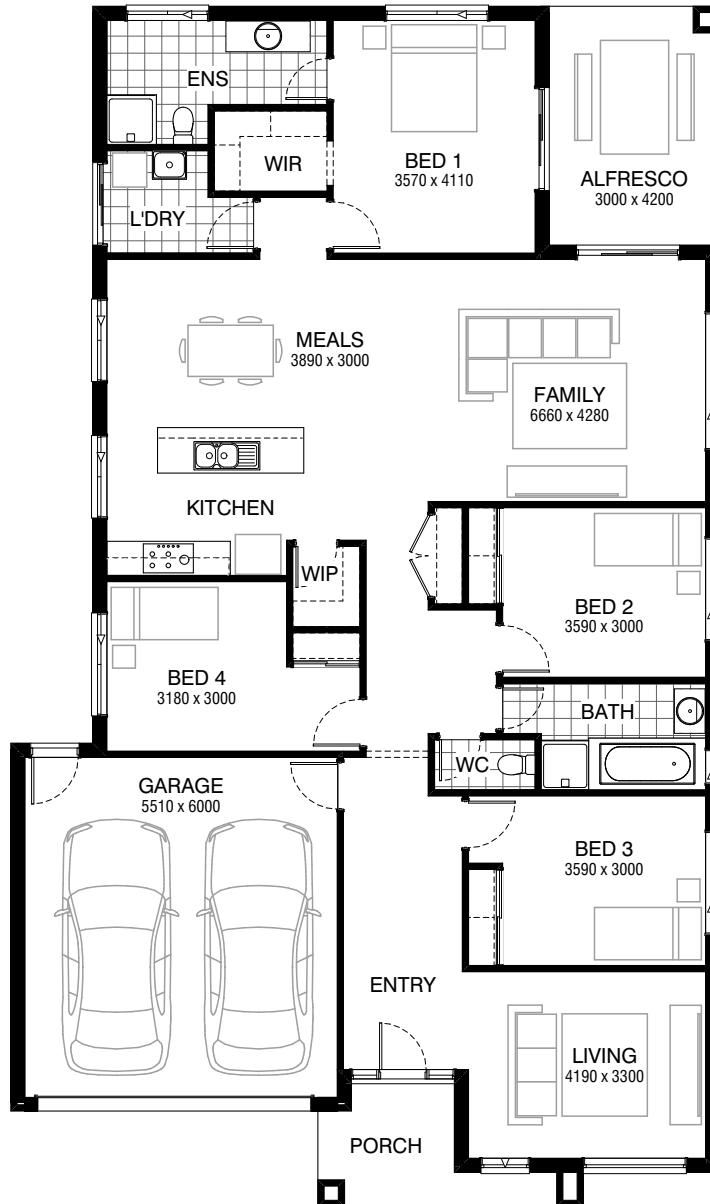


Total squares **25.2sq**

 **4**  **2**  **2**



Facades available:

Drysdale, Arkley, Coburn, Collins
Haring, Dowd, Nolan

Overall home width 12.47m

Overall home length 21.11m

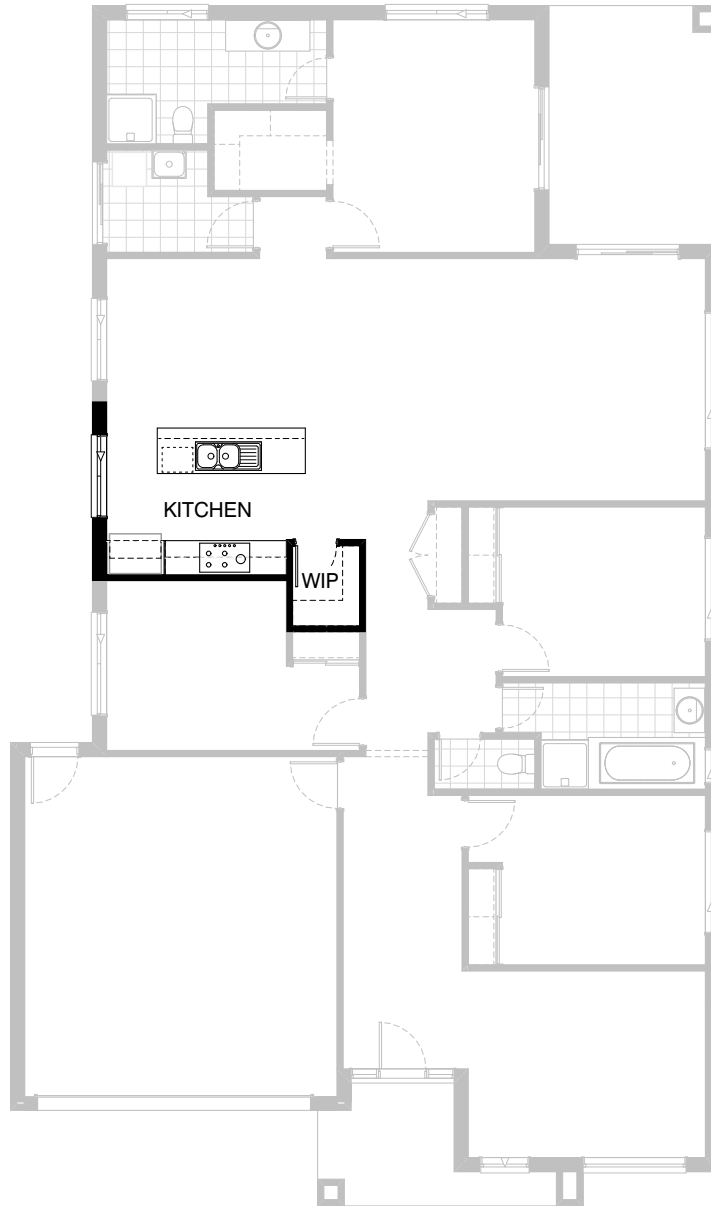
Residence	178.9m ²	19.3sq
Garage	36.3m ²	3.9sq
Porch	6.3m ²	0.7sq
Alfresco	12.6m ²	1.4sq
Total	234.1m²	25.2sq

FLOORPLAN OPTIONS

All available ready-to-go floorplan options for this design can be viewed on the following pages, or visit www.burbank.com.au.

Listed details based on Drysdale façade floorplan (illustrated)

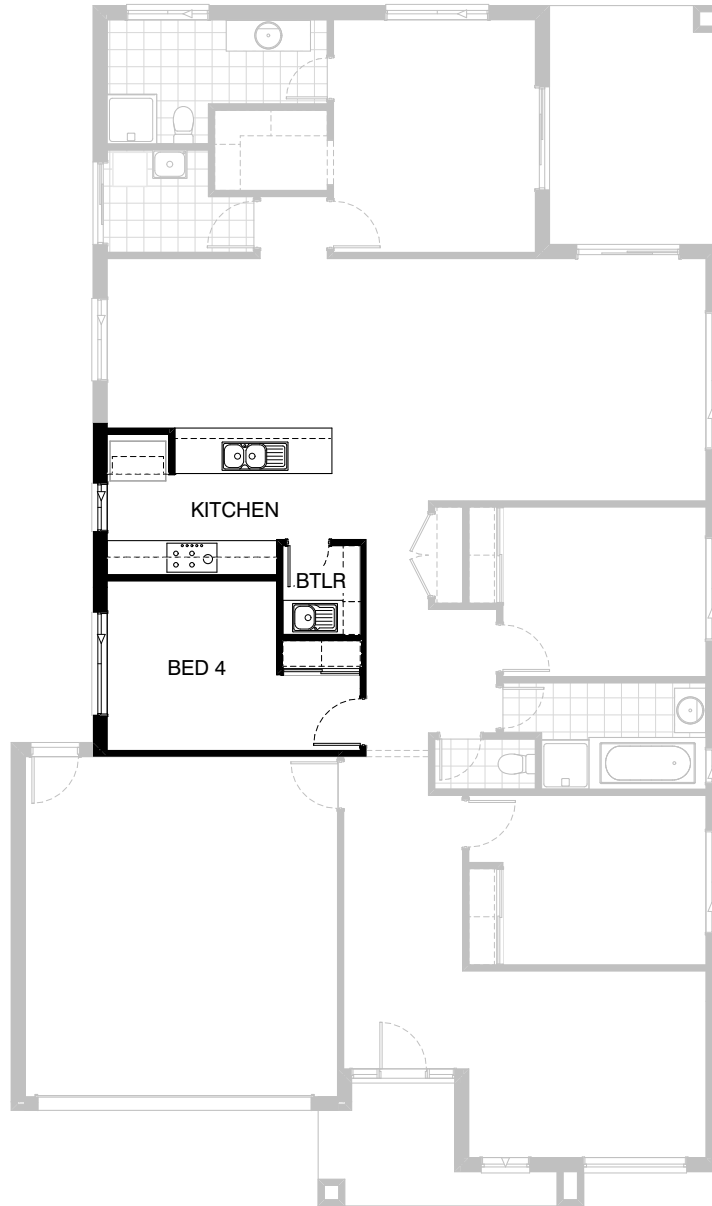
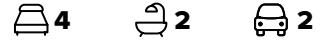
FLOORPLAN OPTIONS



Option K-1

Provide Kitchen upgrade with 1no. laminated open shelf above refrigerator space, 2no. 600mm base cupboards, 2no. 600mm overhead cupboards, 1no. 900mm underbench oven, 1no 900mm hotplate and 1no. 900mm retractable rangehood, 1no. laminated MW provision with pot drawer below, 1no. 800mm base cupboard, 1no. laminated DW provision and 1no. 450mm drawers with additional tiled splashback and bench top to suit.

FLOORPLAN OPTIONS

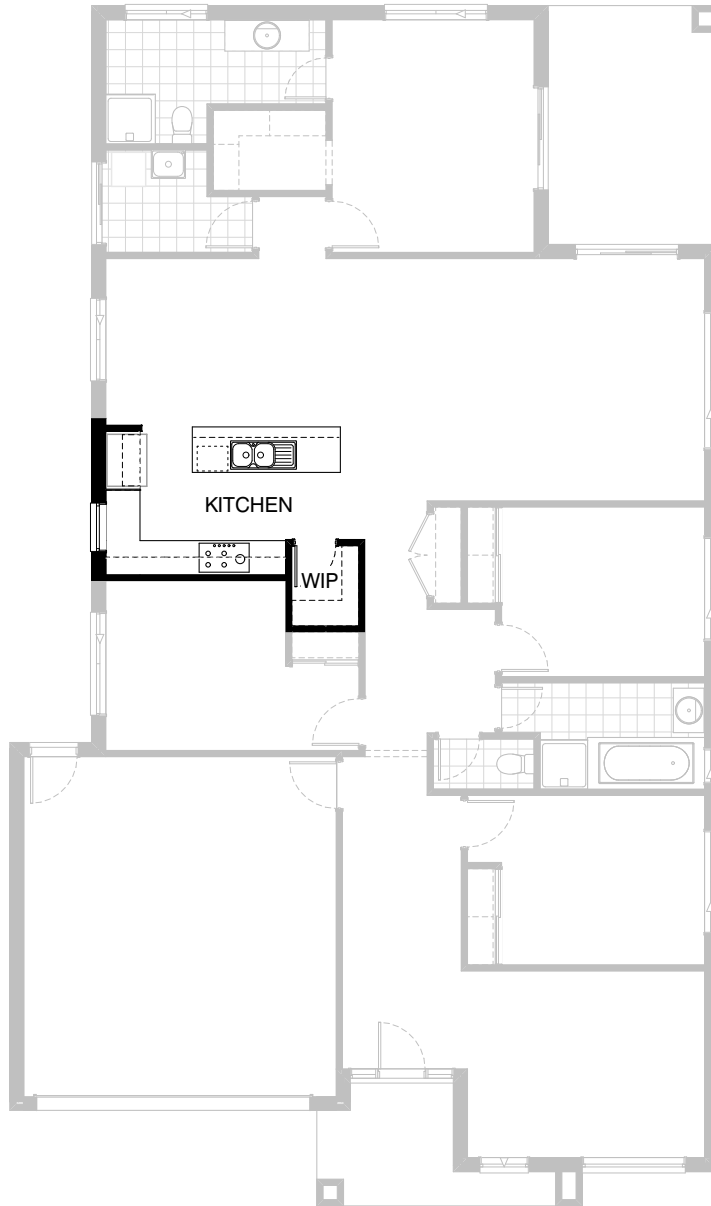
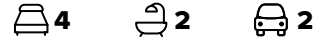


Option K-2

Provide Kitchen and Butlers Pantry Option in lieu of W.I.P.
 Provide 1no. laminated open shelf above refrigerator space,
 2no. 800mm base cupboards, 1no. DW provision,
 1no. 450mm drawers, 2no. 700mm base cupboards,
 2no. 300mm base cupboards, 2no. 700mm overhead
 cupboards, 2no. 300mm overhead cupboards,
 1no. 900mm underbench oven, 1no 900mm hotplate
 and 1no. 900mm retractable rangehood,
 1no. 2057mm x 850mm aluminium sliding window in
 lieu of standard 1no. 2057mm x 1450mm sliding window,
 additional tiled splashback and bench top to Kitchen.
 Provide additional 1no. 300mm base cupboard,
 1no. 700mm base cupboard, 1800mm high open
 adjustable shelves, 1no. single bowl sink with drainer
 and tiled splashback and bench top to suit.

*Copyright conditions. All photos and illustrations are representative only. Floor plans and specifications may be varied by Burbank without notice, the dimensions are diagrammatic only and a Building Contract with final drawings will display correct dimensions and detail. All designs are the property of Burbank and must not be used, reproduced, copied or varied, wholly or in part without written permission from an authorised Burbank representative. Copyright Burbank Australia Pty Ltd. ABN 91 007 099 872. Builders Registration Number CDB-U-52603.

FLOORPLAN OPTIONS



Option K-3

Provide 'L' shaped Kitchen Option by reducing Meals length by 50mm.
Provide additional 1no. 800mm base cupboard, 1no. 400mm base cupboard,
1no. laminated DW provision, 1no. 450mm drawers,
1no. laminated open shelf above refrigerator space,
2no. 600mm base cupboard, 1no. 800mm blind carcass with
1no. 350mm door, 1no. 900mm hotplate, 1no. 900mm underbench
oven with 1no. 900mm retractable rangehood, 1no. 900mm overhead
cupboards, 2no. 600mm overhead cupboard, 1no. 1200mm x 850mm
aluminium fixed window with no bottom reveal in lieu of standard
1no. 2057mm x 1450mm sliding window and additional tiled splashback
and bench top to suit. Provide additional plaster lined wall for fridge space.

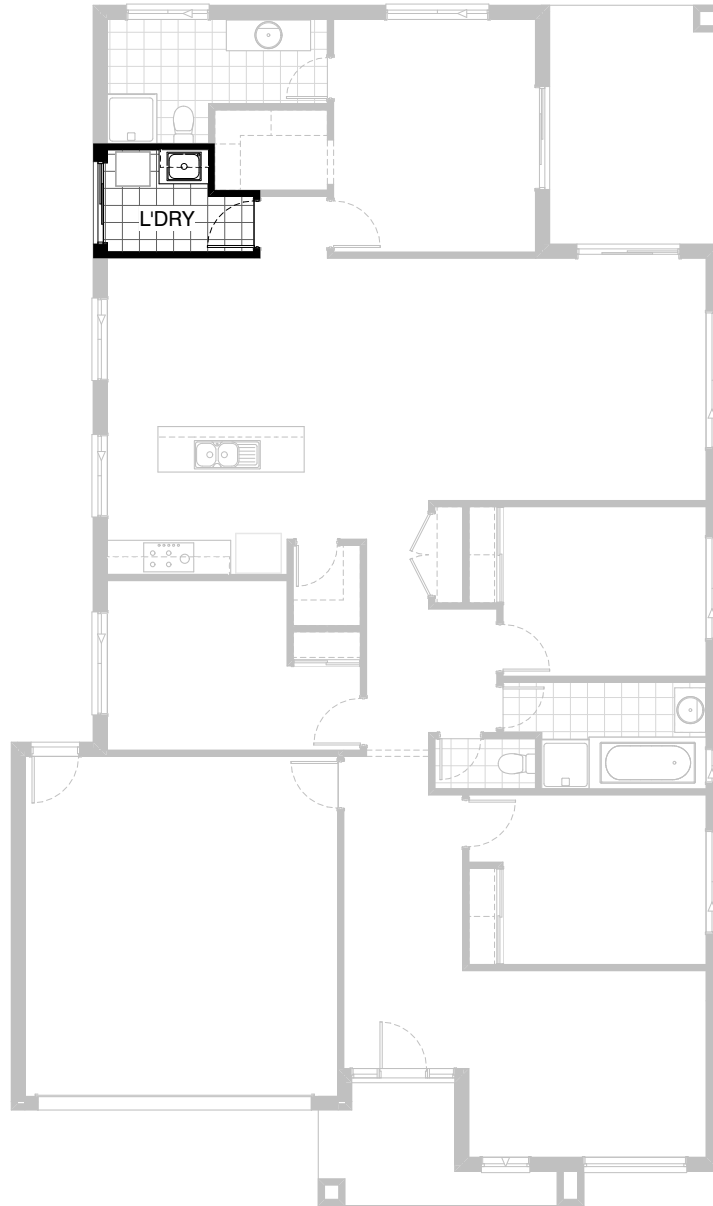
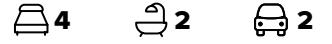
FLOORPLAN OPTIONS



Option ENS-1

Provide Ensuite upgrade with 2100mm wide tiled shower base in lieu of standard, 2no. basins to vanity unit and decrease aluminium sliding window to 1200mm x 850mm in lieu of 1200mm x 1450mm to suit.



FLOORPLAN OPTIONS

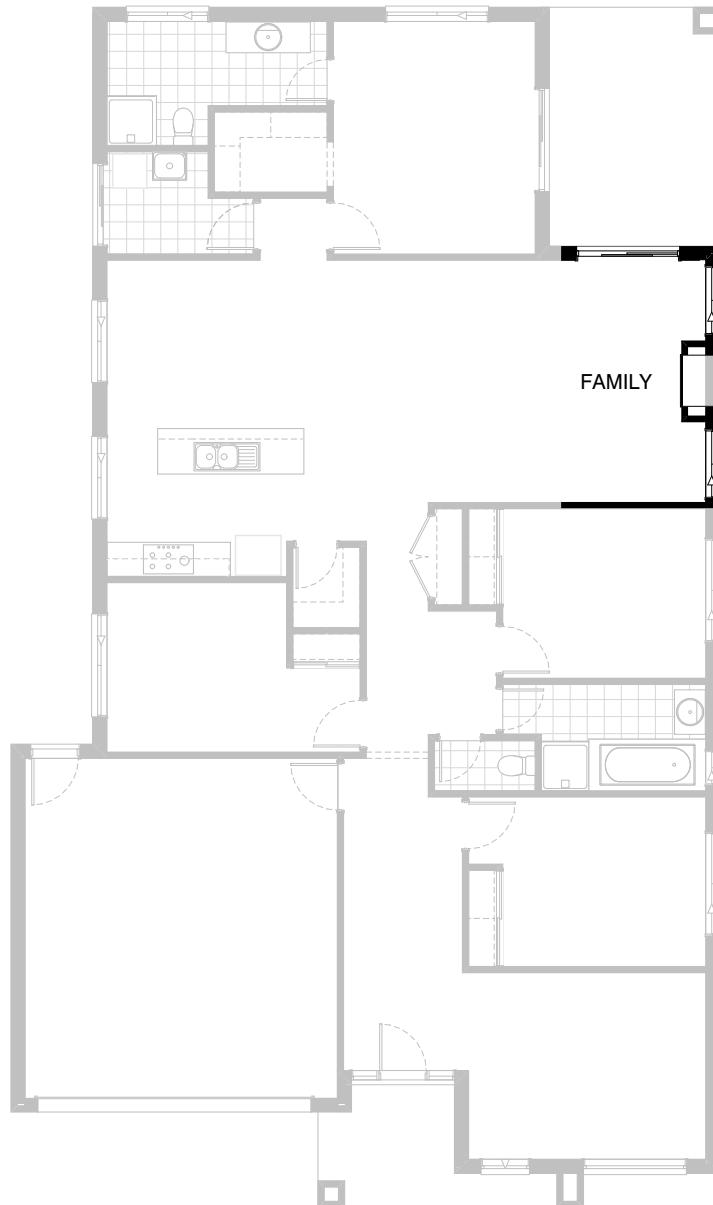


Option LD-1

Provide Laundry upgrade with laminated inset trough,
1no. 800mm base cupboard and 1no. 800mm
overhead cupboard with additional tiled splashback
and bench top to suit.

FLOORPLAN OPTIONS

 **4**  **2**  **2**



Option IP1-1

Provide Real Flame Inspire 900 gas fireplace, 400mm off floor level in a 1400mm x 420mm boxed out plaster wall with a 4 sided black fascia to Family room side wall including additional 2no. 2057mm x 1210mm aluminium sliding window in lieu of 1no. 2057mm x 2410mm window.

FLOORPLAN OPTIONS



Option IP1-2

Mirror rear of dwelling beyond
Family / Meals area

FLOORPLAN OPTIONS


 **4**  **2**  **2**



Option EP1-1

Replace 2no. standard ASD2118 sliding doors to Alfresco with ASD2124 sliding door and ASDS2132 stacker sliding door

FLOORPLAN OPTIONS

 **4**  **2**  **2**



Option G-1

Provide extension to Garage to create additional Storage area.
Increases area by 4.58m².
Increases width by 840mm.

FLOORPLAN OPTIONS



4



2






2

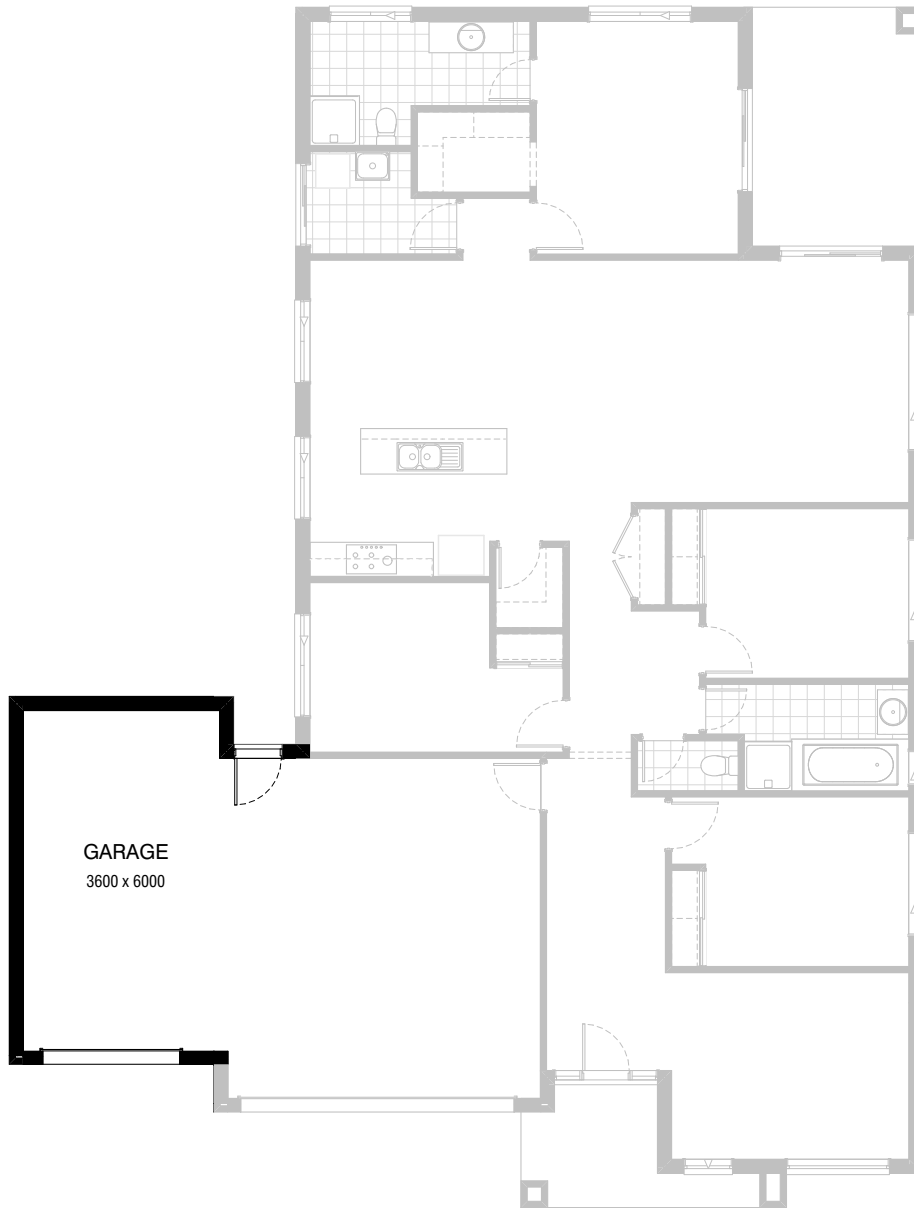


Option G-2

Provide extension to Garage to create Storage area including additional 2057mm x 1210mm aluminium awning window
Increases area by 11.0m².
Increases width by 2040mm.

FLOORPLAN OPTIONS

 **4**  **2**  **2**



Option G-3

Provide triple car Garage including additional
Garage door as per colour selection.
Increases area by 23.69m².
Increases width by 3600mm.