


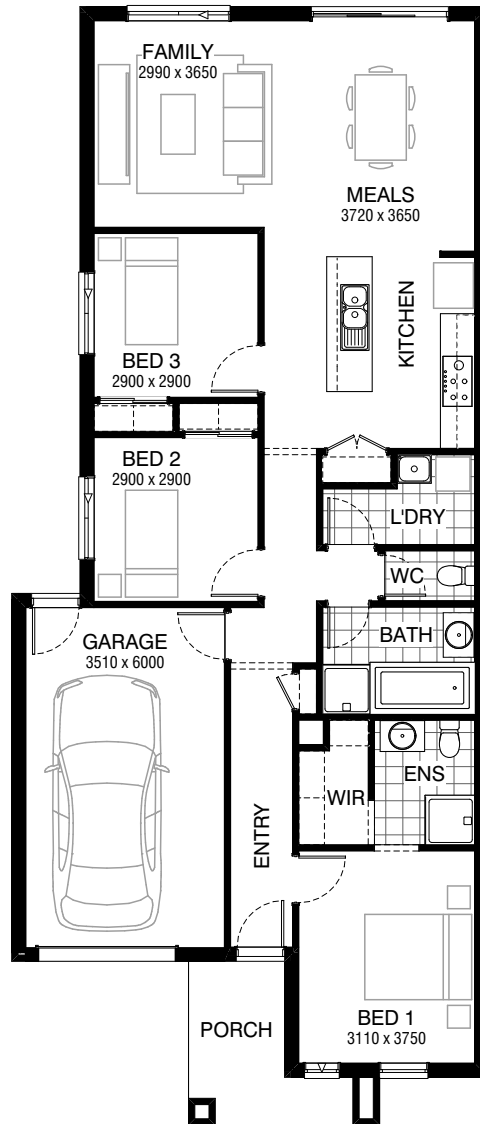


Total squares **15.3sq**

 **3**  **2**  **1**



FLOORPLAN OPTIONS

All available ready-to-go floorplan options for this design can be viewed on the following pages, or visit www.burbank.com.au.

Facades available:

Drysdale, Arkley, Nolan	
Dowd, Haring	
Overall home width	8.39m
Overall home length	19.67m




Residence	112.2m ²	12.1sq
Garage	23.7m ²	2.6sq
Porch	6.3m ²	0.7sq
Total	142.2m²	15.3sq

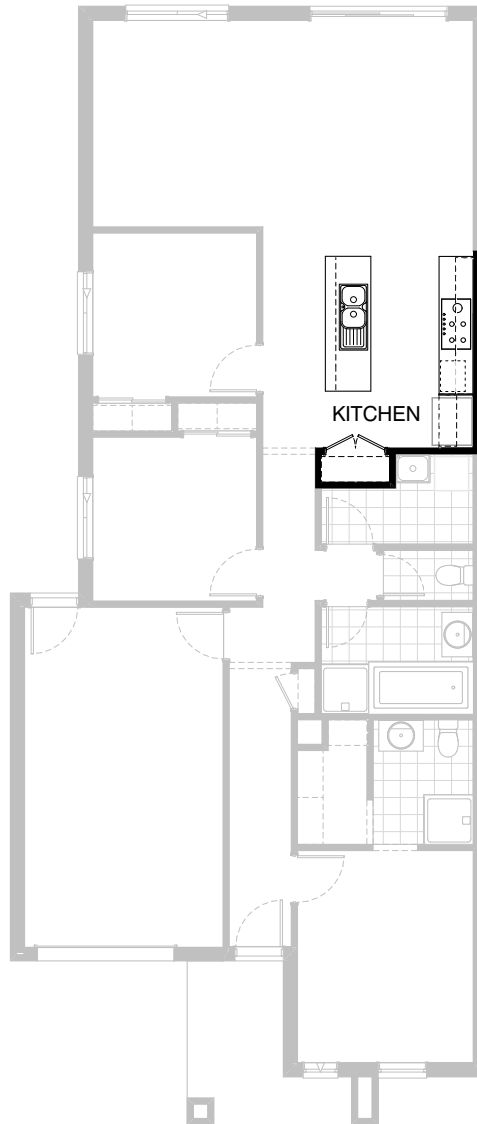
Listed details based on Drysdale façade floorplan (illustrated)

*Copyright conditions. All photos and illustrations are representative only. Floor plans and specifications may be varied by Burbank without notice, the dimensions are diagrammatic only and a Building Contract with final drawings will display correct dimensions and detail. All designs are the property of Burbank and must not be used, reproduced, copied or varied, wholly or in part without written permission from an authorised Burbank representative. Copyright Burbank Australia Pty Ltd. ABN 91 007 099 872. Builders Registration Number CDB-U-52603.

Call 13 BURBANK
Visit burbank.com.au

FLOORPLAN OPTIONS

 **3**  **2**  **1**



Option K-1

Provide Kitchen Option with
1no. 150mm and 1no. 400mm and 1no. 700mm and
1no. 800mm base cabinets, 1no. 450mm drawer unit,
2no. 700mm overhead cabinets.
900mm cooktop and 900mm underbench oven, 900mm retractable rangehood,
laminated open shelf and end panel to refrigerator space,
laminated MW. space with pot drawer,
610mm laminated DW. space I.L.O standard