

Facades available:

Callington, Eastwood, Harrogate
Kent, Lancaster, Sheffield
Swansea, Wiltshire

Overall home width	14.03m
Overall home length	18.83m

Residence	173.4m ²	18.7sq
Garage	36.3m ²	3.9sq
Porch	6.8m ²	0.7sq
Alfresco	12.9m ²	1.4sq
Total	229.4m²	24.7sq

FLOORPLAN OPTIONS

We personalise our floorplans. Talk to us about our huge range of ready-to-go design options or simply visit www.burbank.com.au/south-australia for more details.

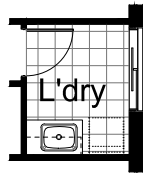
Listed details based on Sheffield facade floorplan (illustrated)

*Copyright conditions. All photos and illustrations are representative only. Floor plans and specifications may be varied by Burbank without notice, the dimensions are diagrammatic only and a Building Contract with final drawings will display correct dimensions and detail. All designs are the property of Burbank and must not be used, reproduced, copied or varied, wholly or in part without written permission from an authorised Burbank representative. Copyright Burbank Australia (SA) Pty Ltd. ABN 96 165 533 406. BLD 266709.

Call 13 BURBANK
Visit burbank.com.au

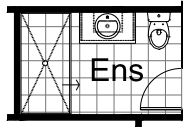
OPTION LD1

Provide Laundry upgrade with Additional laminated insert trough, 1no. 900mm base cupboard, 1no. 900mm overhead cupboard, Additional tiled splash back and bench top to suit.



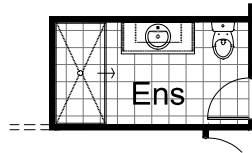
OPTION ENS1

Provide Ensuite upgrade with 1800mm wall to wall tiled shower base in lieu of standard, 1no. 1282mm wide vanity basin in lieu of standard.



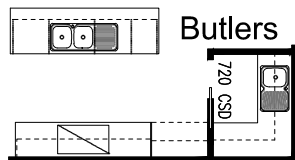
OPTION ENS2

Provide Ensuite upgrade by Deleting Linen cupboard including 2no. 720mm flush panel hinged doors, 300mm deep shelves, Extend Ensuite width by 600mm. Provide 1800mm wall to wall tiled shower base in lieu of standard, 1no. 1282mm wide vanity basin in lieu of standard.



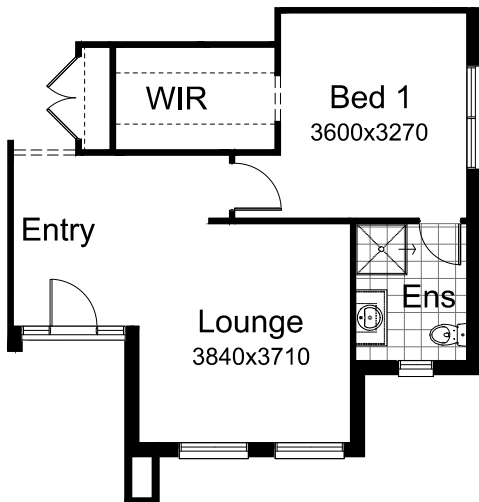
OPTION IP5

Provide Butlers Pantry ILO standard Walk In Pantry including 1no. 820mm cavity sliding door ILO 720mm hinged door, 1no. Single bowl sink. Provide open shelving overheads. 1no. 800mm blind base cupboard with 350 door, 1no. 700mm base cupboard, 1no. 800mm base cupboard, Additional bench top and tiled splashback to suit. Only available with OPTION IP3 & OPTION IP4



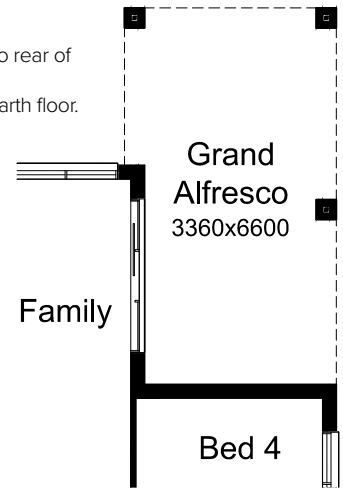
OPTION IP1

Relocate Ensuite with WIR.



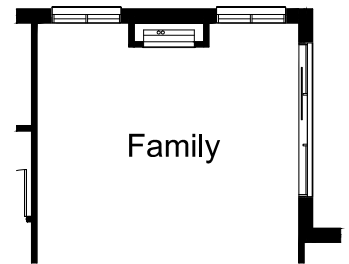
OPTION EP1

Provide Grand Alfresco Option to rear of Family including 2no. additional brick piers and earth floor. Increases area by 10.24m². Increase length by 2760mm.



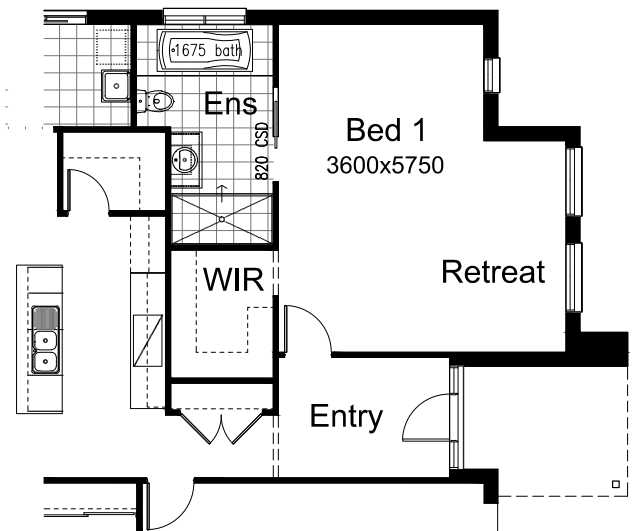
OPTION IP2

Provide Real Flame Inspire 900 gas fireplace, 400mm off floor level in a 1400mm x 420mm boxed out plaster wall with, 4 sided black fascia to Family room rear wall, 2no. ASW1812 aluminium sliding windows in lieu of standard,



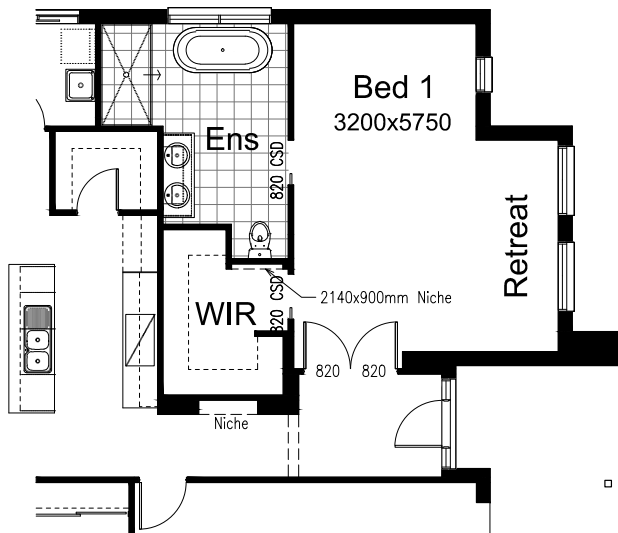
OPTION IP3

Delete Lounge and relocate Bed 1, WIR and Ensuite. Increase WIP by 600mm with 450mm(w) shelves to 2 sides, wall to line up with wall of kitchen. Provide 1no. 820mm cavity sliding door to Ensuite and delete 720mm hinged door. Relocate 820mm hinged door to bedroom 1. Provide 1675mm bath and 1800x900 tiled shower to Ensuite. Provide ASW 1215 window to ensuite ILO ASW 1818.



OPTION IP4

Delete Lounge and relocate Bed 1, WIR and Ensuite.
Delete Linen in entry passage and provide niche with 340mm wall.
Increase WIP by 600mm with 300mm(w) shelves to 3 sides, wall to line up with wall of kitchen.
Decrease Laundry by 490mm to wall behind trough
Provide 1800mm x 900mm tiled shower to ensuite.
Provide 2140(h)x900(w) niche in WIR.
Provide 2no's 820mm cavity sliding doors.
Delete 720mm hinged door and relocate 820mm hinged door to bedroom 1 entry to provide double 820mm doors.
Provide freestanding bath,
Provide 1482 double bowl vanity ILO 982(w).
Provide ASW 1218 window to ensuite ILO ASW 1818.
Reduce front entry door to be 1570 ILO 1810mm(w).



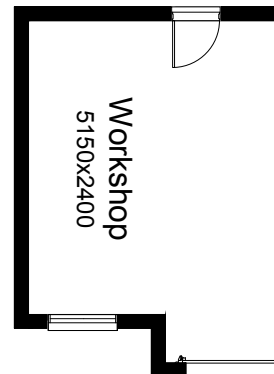
OPTION G1

Provide extension to Garage to create additional Storage area.
Increases area by 4.58m².
Increases width by 850mm.



OPTION G2

Provide workshop area to Garage including 1no. AAWF1812 aluminium feature awning window.
Increases width by 2400mm.
Increases area by 13.51m².



OPTION G2

Provide triple car Garage including additional roller door to front.
Increases area by 20.51m².
Increases width by 3120mm.

