

FLOORPLAN OPTIONS

We personalise our floorplans. Talk to us about our huge range of ready-to-go design options.

Facades available:

Barrine, Mackay	
Lonsdale, Corella	
Overall home width	10.31m
Overall home length	19.91m

Residence	338.2m ²	36.4sq
Garage	36.1m ²	3.9sq
Porch	4m ²	0.4sq
Alfresco	16.5m ²	1.8sq
Total	394.9m²	42.5sq

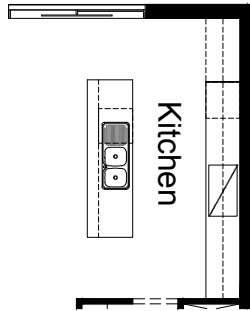
Listed details based on Barrine facade floorplan (illustrated)

*Copyright conditions. All photos and illustrations are representative only. Floor plans and specifications may be varied by Burbank without notice, the dimensions are diagrammatic only and a Building Contract with final drawings will display correct dimensions and detail. All designs are the property of Burbank and must not be used, reproduced, copied or varied, wholly or in part without written permission from an authorised Burbank representative. Copyright Burbank Australia (NSW) Pty Ltd. ABN 88 610 822 770. NSW BL 295627C ACT BL 2016566.

Call 13 BURBANK
Visit burbank.com.au

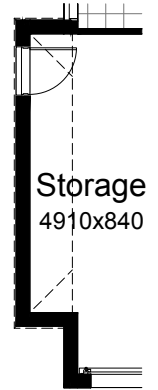
OPTION K1

Provide Kitchen upgrade with laminated open shelf above refrigerator space, 1no. laminated MW provision with pot drawer below, 2no. 800mm base cupboards, 1no. 600mm pot drawers, 4no. 700mm overhead cupboards. Island bench remains unchanged. Provide additional tiled splash back and bench top to suit.



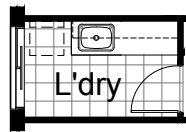
OPTION G1

Provide extension to Garage to create additional Storage area. Provide pitched roof and lightweight cladding (Scyon Stria) above. Increases area by 4.52m². Increases width by 840mm.



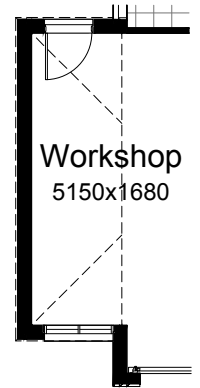
OPTION LD1

Provide Laundry Option with additional inset laminated trough, 2no. 900mm base cupboards, 2no. 900mm overhead cupboards and additional tiled splash back and bench top to suit. NOTE: This Option not to be used with Option G-3



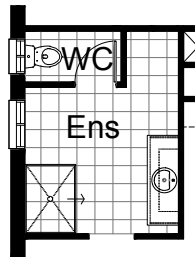
OPTION G2

Provide extension to Garage to create Workshop area including additional window to suit. Provide pitched roof and lightweight cladding (Scyon Stria) above. Increases area by 9.45m². Increases width by 1680mm.



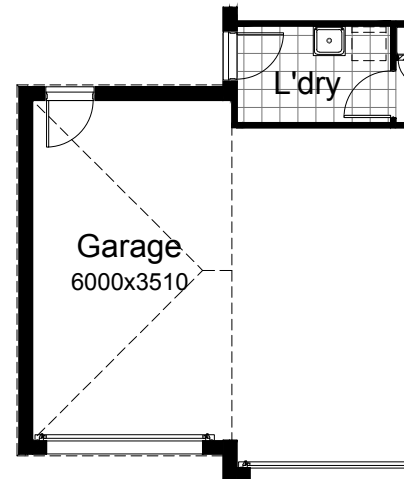
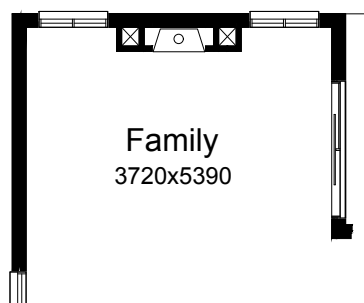
OPTION ENS1

Provide Ensuite upgrade with additional site built plaster lined walls to WC with 1no. 720mm flush panel hinged door, 1no. 1027mm x 610mm aluminium sliding window, 1200mm x 900mm tiled shower base, 1582mm wide vanity unit and 1no. 1800mm x 850mm aluminium sliding window in lieu of standard.



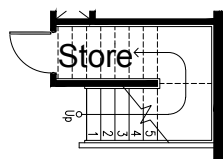
OPTION IP1

Provide Jetmaster SL-350 gas fireplace, 400mm off floor level in a 1400mm x 420mm boxed out plaster wall with a 4 sided black fascia to Family room rear wall. Relocate Plumbing stack, void and 2no. Family windows to suit.



OPTION IP2

Provide Store to under side of staircase with additional 1no. 720mm flush panel hinged door.

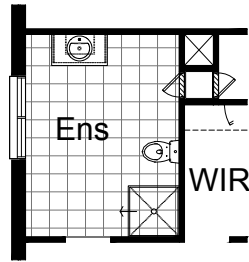
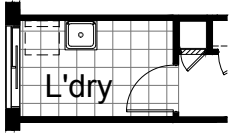


OPTION G3

Provide triple car Garage with pitched roof and lightweight cladding (Scyon Stria) above, additional Garage door as per colour selection and additional 1no. 2105mm x 850mm external hinged door in lieu of standard 2110mm x 1450mm aluminium sliding door to Laundry. Increases width by 3600mm. Increases area by 23.29m². NOTE: This Option not to be used with Option LD-1

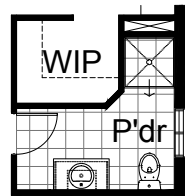
OPTION IP3

Provide Laundry Chute.



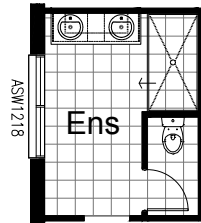
OPTION IP4

Provide Powder upgrade with additional 900mm x 900mm tiled shower base, relocate hinged door, toilet and vanity basin to suit and increase WIP by 100mm and angle stud wall to suit.



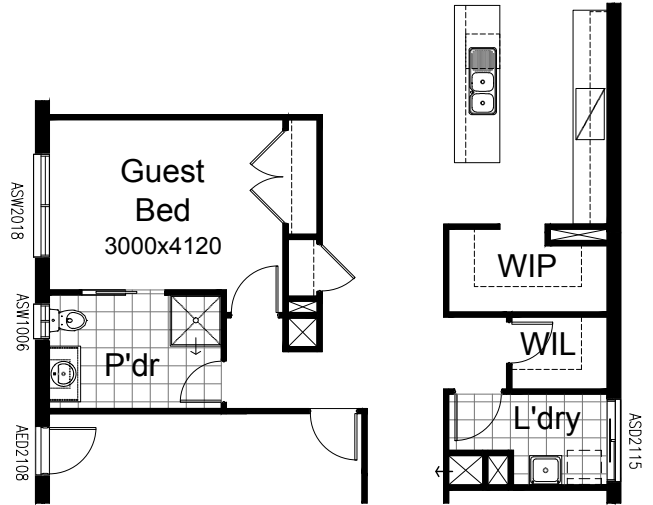
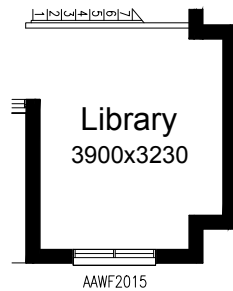
OPTION ENS2

Provide Ensuite option with site built plaster lined WC with 1no. 720mm flush panel hinged door, 1no. wall to wall tiled shower base in lieu of standard and 1no. 1582mm wide vanity unit with 2no. basins in lieu of standard..



OPTION IP5

Provide Library option by extending Library wall width by 600mm with brick parapet flat roof above. Increases area by 215m². Increases width by 600mm.



OPTION IP6

Provide Guest Bedroom option in lieu of Theatre including additional 2no. 820mm flush panel hinged doors and plaster lined robe with 1no. hanging rail and shelf. Relocate Laundry with Powder and provide additional 1no. 900mm x 900mm polymarble shower base, 1no. 1027mm x 610mm aluminium sliding window in lieu of standard 1no. 1800mm x 850mm window and additional 1no. 720mm cavity sliding door. Relocate Walk in Linen and relocate Linen cupboard with 1no. 820mm flush panel hinged door in lieu of standard 1no. 720mm door.

NOTE: IP6 option and IP7 option cannot be selected together.