

Facades available:

Coastal, Delta, Kingston, Nouveau
Salisbury, Traditional, York

Overall home width 11.26m

Overall home length 20.51m

Residence	149.3m ²	16.1sq
Garage	37.4m ²	4.0sq
Porch	3.2m ²	0.4sq
Alfresco	17.2m ²	1.2sq
Total	207.0m²	22.3sq

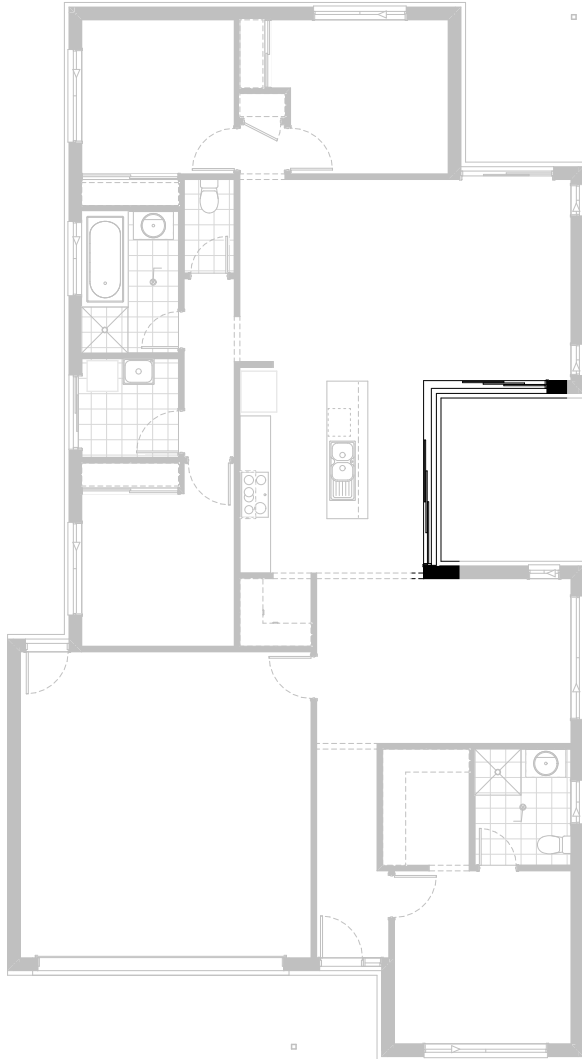
FLOORPLAN OPTIONS

We personalise our floorplans. Talk to us about our huge range of ready-to-go design options.

Listed details based on Traditional facade floorplan (illustrated)

*Copyright conditions. All photos and illustrations are representative only. Floor plans and specifications may be varied by Burbank without notice, the dimensions are diagrammatic only and a Building Contract with final drawings will display correct dimensions and detail. All designs are the property of Burbank and must not be used, reproduced, copied or varied, wholly or in part without written permission from an authorised Burbank representative. Copyright Burbank Australia (QLD) Pty Ltd. ABN 77 103 014 615. QBCC 1046544.

Call 13 BURBANK
Visit burbank.com.au



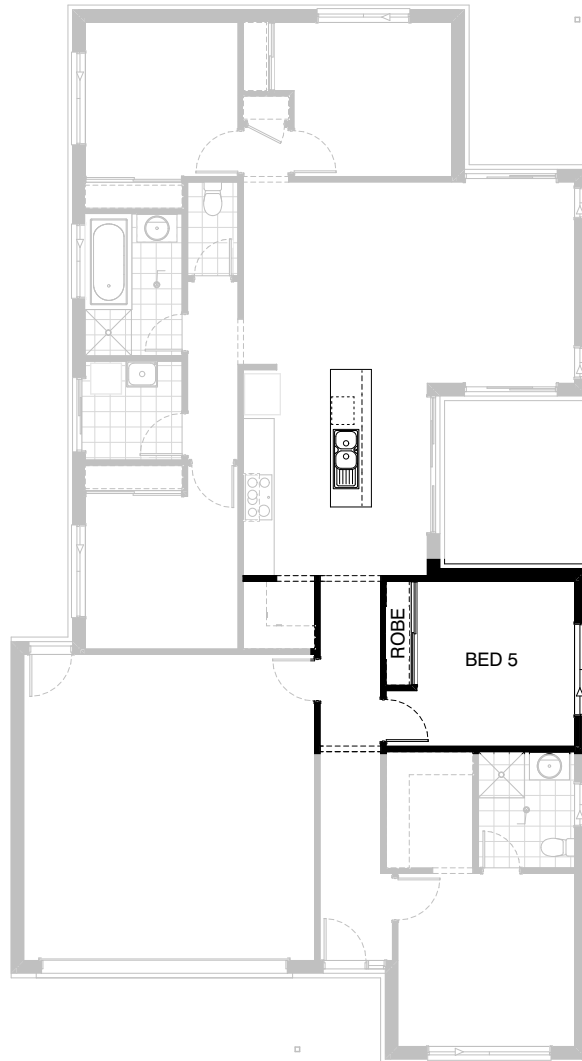
Option External01

Provide corner sliding door option -
replace ASD 2118 and ASD 2127 sliding
doors with ACSD 2124-36 corner sliding
door as shown.



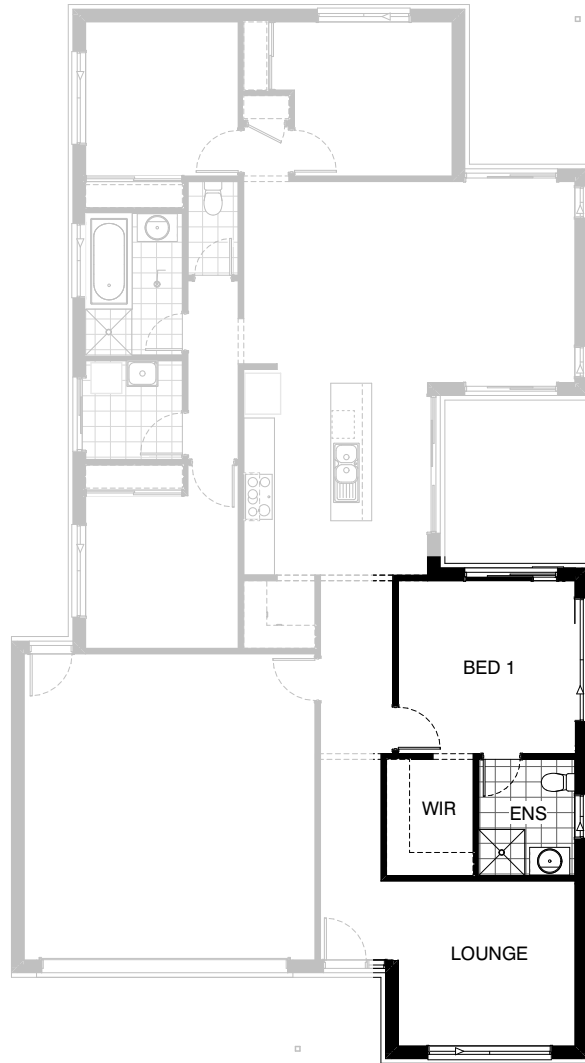
Option Internal01

Provide internal plan option to create Theatre Room by adding stud and plaster walls and bulkhead to opening. Island bench moves 280mm towards Meals as shown to provide circulation space.



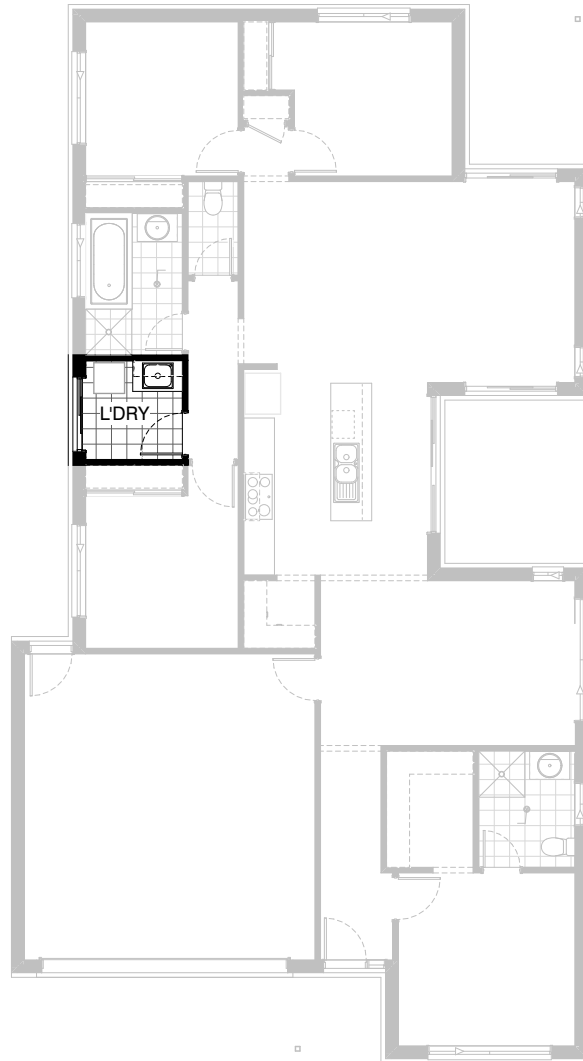
Option Internal02

Provide 5th Bedroom option to Lounge with additional stud and plaster wall, 820mm hinged door and built-in Robe with 450mm shelf and hanging rail.
Remove ASW2006 window and replace ASW0524 window with ASW1218 as shown.
Island bench moves 280mm towards Meals as shown to provide circulation space.



Option Internal03

Provide floor plan option which swaps the location of Bed 1 and Lounge, and flips the layout of Ensuite and Walk-in Robe as shown.
Replace ASW2006 with ASD2118 to Bed 1.



Option Laundry01

Provide floor plan option which swaps the location of Bed 1 and Lounge, and flips the layout of Ensuite and Walk-in Robe as shown.
Replace ASW2006 with ASD2118 to Bed 1.