

Burbank 
#noplacelikehome

**New &
improved
collection**

- more options
available!

SWIFT collection

start your
new home

faster!



Image shown is the Rydell 235
as displayed at Marigold Estate, Tarneit.



ABOUT US

Aspirational, award-winning and distinctly Australian, Burbank has been building homes since 1983.

Led by a passionate team who live and breathe home building, Burbank is a family owned and operated business with family values at the heart of every home.

Beginning as a small home building company in Victoria, Burbank has since blossomed into one of Australia's most trusted builders. With construction on the ground in Victoria, Queensland, South Australia, New South Wales and the Australian Capital Territory.

Combining outstanding style, uncompromising quality and exceptional customer service, Burbank strives to deliver a seamless and stress-free building experience to every customer.

Burbank 
#noplacelikehome

ABOUT THE NEW & IMPROVED BURBANK SWIFT COLLECTION!

HOW DOES IT WORK

We have created 10 brand new homes that are complete with everything you need to move straight in. The improved collection comes with more choice and flexibility allowing you to select further upgrades and additional floorplan options to give your home that **WOW** factor all while building a Swift home. A Swift home will save you time and money as you select a ready-to-go floorplan, facade and colour scheme, speeding up your building contract to just **7 business days** and expressing you through the start of your build journey!

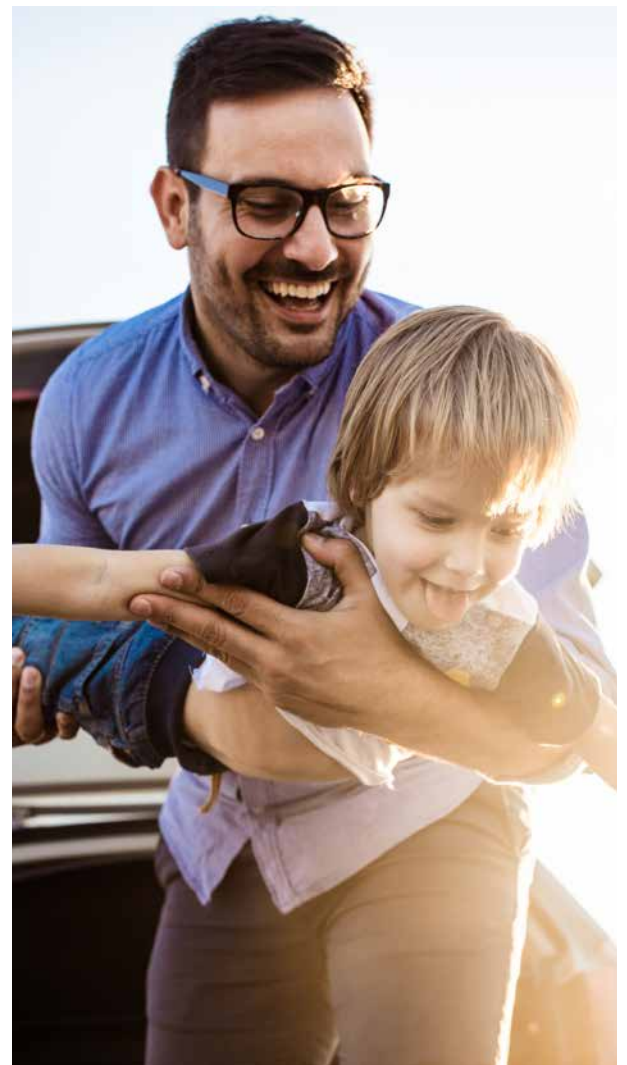
EASY 3 STEP PROCESS

We have simplified the process so you can make swift choices between floorplans, facades and colour schemes.

STEP 1 Select your **SWIFT** design and floorplan options
- 8 single storey and 2 double storey design options.

STEP 2 Make your **SWIFT** facade choice from our 3 options.

STEP 3 Make your **SWIFT** colour choice between 3 modern ready-to-go external and internal colour schemes.



New & improved collection

- more options available!

VISIT US & EXPERIENCE OUR DIFFERENCE!



HEAD ONLINE OR TO A BURBANK HOMEX CENTRE TO EXPERIENCE YOUR HOME, BEFORE IT'S BUILT!

HomeX is a design tool like no other that enables you to virtually experience our home designs, all floorplan options and choose from one of our nine style options that updates the colour schemes and furniture to suit your style. You can use it online or experience in VR.

This world first technology offers millions home combinations at the click of a button. Meaning you can tailor your dream home, just for you - anytime, anywhere with HomeX.

<https://www.burbank.com.au/about-homex-3Dvisualisation/>



Click the button below to head to our website and start planning your home.

START PLANNING YOUR HOME

OUR DISPLAY HOMES

We have over 50 home designs displayed across the North, West, South East, Geelong & Bellarine and Regional Victoria. We highly recommend taking a trip to our displays where you can expect a full tour of our homes alongside one of our friendly New Home Consultants.

For display locations & opening hours call 13 BURBANK or visit www.burbank.com.au/victoria/display-homes

BURBANK EDGE SELECTION STUDIO



Get inspired and visit our Edge Burbank Selection Studio - the one stop shop for design inspiration. Browse our showroom, meet our expert team of interior designers and experience our huge selection – from bricks to benchtops, doors to floor coverings, and everything in-between.

Book a tour today - call 9328 0351 or head to www.burbank.com.au/victoria/edge-selection-studio



MYPLACE APP

You will keep up-to-date with your brand new home build with the exclusive Burbank MyPlace App. See the status of your home, stage by stage, keep important documentation at your fingertips and see real-time photos of your Burbank home coming to life.



STEP 1 SELECT YOUR FLOORPLAN

SWIFT COLLECTION DESIGNS

10 of our most popular home designs have been tailored to fit on a range of lot sizes. Whether you're looking for a home for one or a larger family, each design offers a modern floorplan as well as choices of additional upgrades and finishes over and above our premium home inclusions.

PREMIUM INCLUSIONS

When you build with us, you will get unbeatable value that you cannot find anywhere else. Our Swift Collection offers a range of premium inclusions with everything you need to be able to move straight in.

[VIEW PREMIUM INCLUSIONS](#)

UPGRADE OPTIONS

We now offer a range of floorplan upgrades for every Swift home. Choose from Kitchen, Ensuite, Laundry, Bathroom & Alfresco upgrades for your chosen design, as well as the option to select upgraded specifications and additional upgrade packages. See details on page 26.

| SINGLE STOREY SWIFT | LOT DEPTH | HOME SQUARES |  |  |  |  | PAGE |
|---------------------|-----------|--------------|---|---|---|---|------|
| 10m LOT WIDTH | | | | | | | |
| ^Seton 160 | 28m | 17.3sq | 3 | 2 | - | Single | 6 |
| 12.5m LOT WIDTH | | | | | | | |
| Gibson 182 | 25m | 19.6sq | 3 | 2 | - | Double | 7 |
| Roberts 178 | 25m | 19.3sq | 3 | 2 | ✓ | Double | 9 |
| Sampson 206 | 28m | 22.3sq | 4 | 2 | ✓ | Double | 11 |
| 14m LOT WIDTH | | | | | | | |
| Perkins 172 | 21m | 18.6sq | 4 | 2 | ✓ | Double | 12 |
| Morris 234 | 28m | 25.3sq | 4 | 2 | ✓ | Double | 13 |
| Johnson 250 | 30m | 27.0sq | 4 | 2 | ✓ | Double | 14 |
| Parsons 234 | 28m | 25.2sq | 4 | 2 | ✓ | Double | 15 |
| DOUBLE STOREY SWIFT | LOT DEPTH | HOME SQUARES |  |  |  |  | PAGE |
| 12.5m LOT WIDTH | | | | | | | |
| ^Rydell 235 | 21m | 25.4sq | 4 | 2.5 | - | Double | 17 |
| 14m LOT WIDTH | | | | | | | |
| Tander 325 | 25m | 35.0sq | 4 | 2.5 | ✓ | Double | 19 |

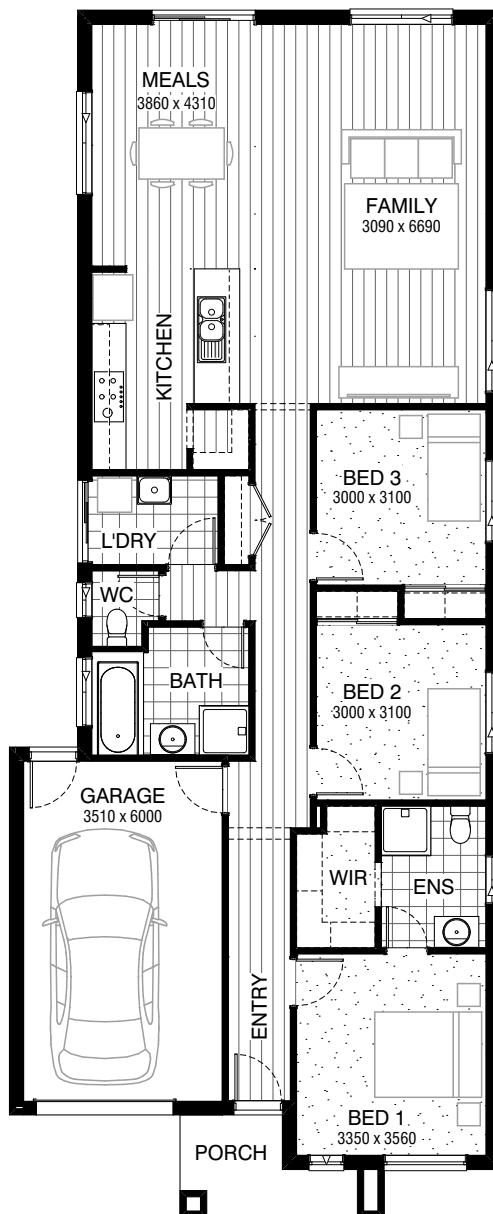
^ These designs are suitable for small lot housing code





Total squares **17.3sq**

 **3**  **2**  **1**



[VIEW OPTIONS](#)

[VIEW INTERNAL SPECIFICATIONS](#)



Click above to experience and customise this home.

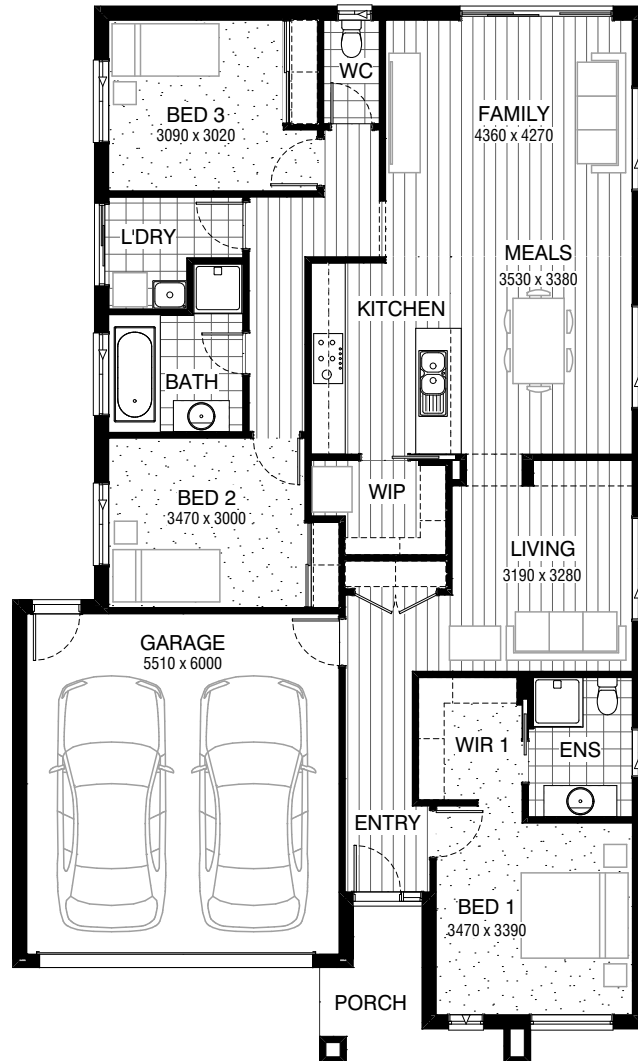
| | |
|----------------------------|---------------|
| Facades available: | |
| Arkley, Drysdale, Haring | |
| Overall home width | 8.63m |
| Overall home length | 21.23m |

| | | |
|--------------|---------------------------|---------------|
| Residence | 132.2m ² | 14.2sq |
| Garage | 23.7m ² | 2.6sq |
| Porch | 4.7m ² | 0.5sq |
| Total | 160.6m² | 17.3sq |

Listed details based on Drysdale facade floorplan (illustrated)
^ This design is suitable for small lot housing code

Total squares **19.6sq**

 **3**  **2**  **2**



single storey

[VIEW OPTIONS](#)

[VIEW INTERNAL SPECIFICATIONS](#)



Click above to experience and customise this home.

Facades available:

| | |
|----------------------------|---------------|
| Arkley, Drysdale, Haring | |
| Overall home width | 11.15m |
| Overall home length | 18.59m |

| | | |
|--------------|---------------------------|---------------|
| Residence | 140.0m ² | 15.1sq |
| Garage | 36.4m ² | 3.9sq |
| Porch | 5.5m ² | 0.6sq |
| Total | 181.9m² | 19.6sq |

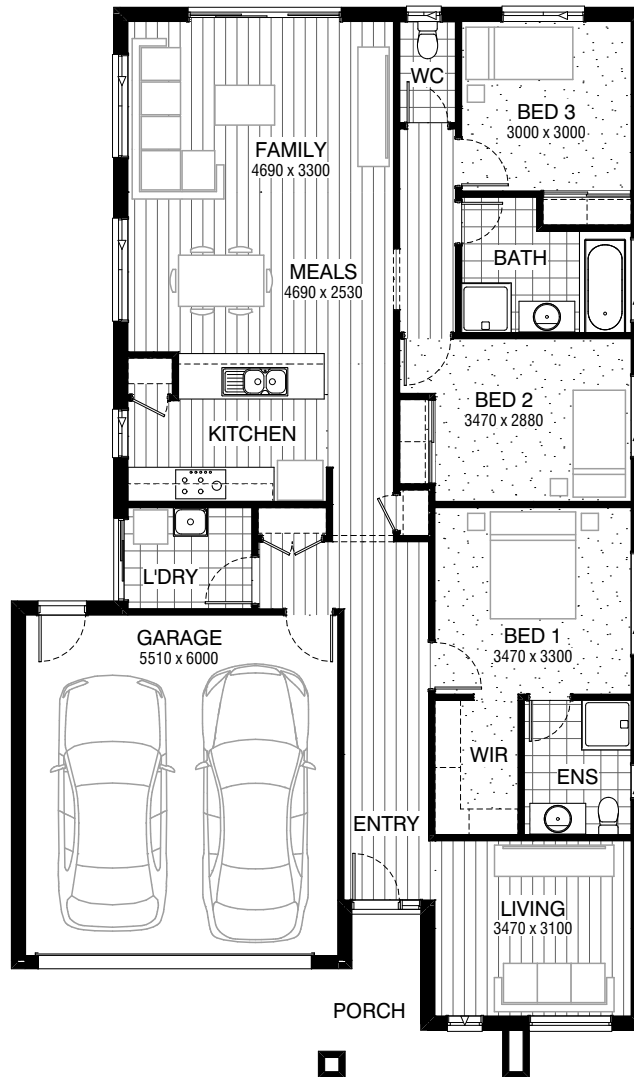
Listed details based on Drysdale facade floorplan (illustrated)



Image is for illustrative purposes only and may contain details of optional items or furniture not included or available in the Swift Collection.
Image shown is the Sampson 206 as displayed at Mandarin Estate, Tainpei.

Total squares **19.3sq**

 **3**  **2**  **2**



[VIEW OPTIONS](#)

[VIEW INTERNAL SPECIFICATIONS](#)



Click above to experience and customise this home.

Facades available:

| | |
|----------------------------|---------------|
| Arkley, Drysdale, Haring | |
| Overall home width | 11.15m |
| Overall home length | 18.83m |

| | | |
|--------------|---------------------------|---------------|
| Residence | 136.4m ² | 14.7sq |
| Garage | 36.5m ² | 3.9sq |
| Porch | 6.2m ² | 0.7sq |
| Total | 179.1m² | 19.3sq |

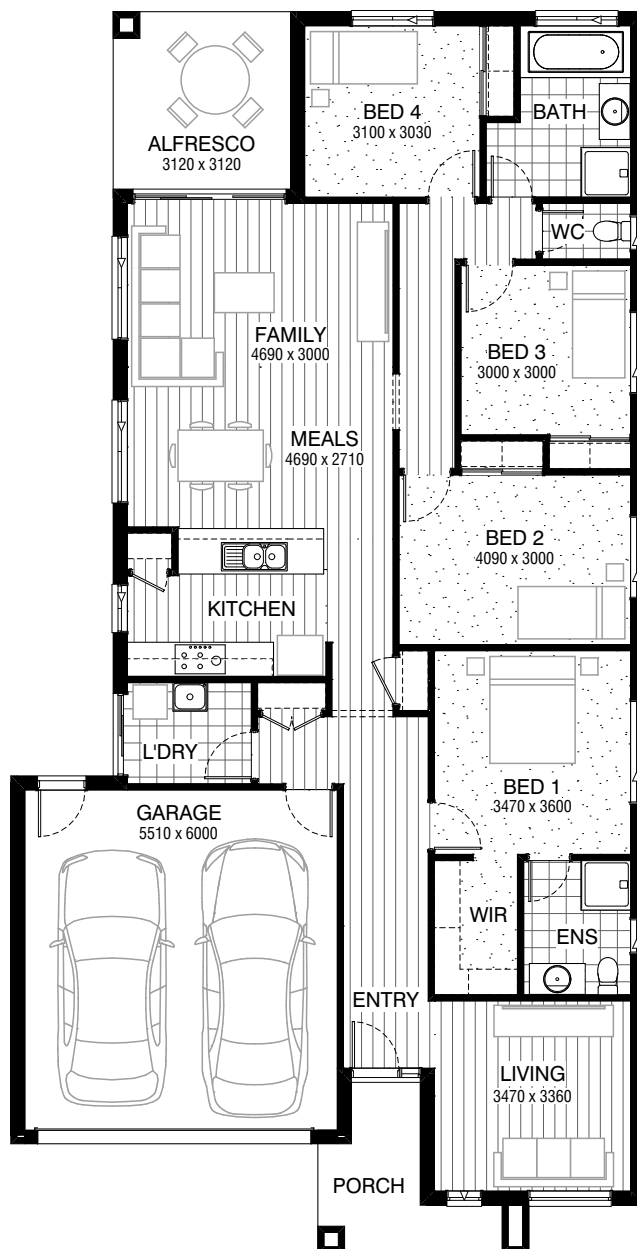
Listed details based on Drysdale facade floorplan (illustrated)



Image is for illustrative purposes only and may contain internal or external option items or furniture not included or available in the Swift Collection. Image shown is the Sampson 206 as displayed at Marigold Estate, Tamriel.

Total squares **22.3sq**

 **4**  **2**  **2**



[VIEW OPTIONS](#)

[VIEW INTERNAL SPECIFICATIONS](#)



Click above to experience and customise this home.

Facades available:

| | |
|----------------------------|---------------|
| Arkley, Drysdale, Haring | |
| Overall home width | 11.15m |
| Overall home length | 21.83m |

| | | |
|--------------|---------------------------|---------------|
| Residence | 154.5m ² | 16.6sq |
| Garage | 36.5m ² | 3.9sq |
| Porch | 6.4m ² | 0.7sq |
| Alfresco | 9.7m ² | 1.0sq |
| Total | 207.1m² | 22.3sq |

Listed details based on Drysdale facade floorplan (illustrated)

Total squares **18.6sq**

 **4**  **2**  **2**



[VIEW OPTIONS](#)

[VIEW INTERNAL SPECIFICATIONS](#)



Click above to experience and customise this home.

Facades available:

| | | |
|----------------------------|---------------|--|
| Arkley, Drysdale, Haring | | |
| Overall home width | 12.59m | |
| Overall home length | 15.83m | |

| | | |
|--------------|---------------------------|---------------|
| Residence | 130.6m ² | 14.1sq |
| Garage | 36.1m ² | 3.9sq |
| Porch | 6.1m ² | 0.7sq |
| Total | 172.8m² | 18.6sq |

Listed details based on Drysdale facade floorplan (illustrated)

Total squares **25.3sq**

 **4**  **2**  **2**



[VIEW OPTIONS](#)

[VIEW INTERNAL SPECIFICATIONS](#)



Click above to experience and customise this home.

Facades available:

Arkley, Drysdale, Haring

Overall home width 12.59m

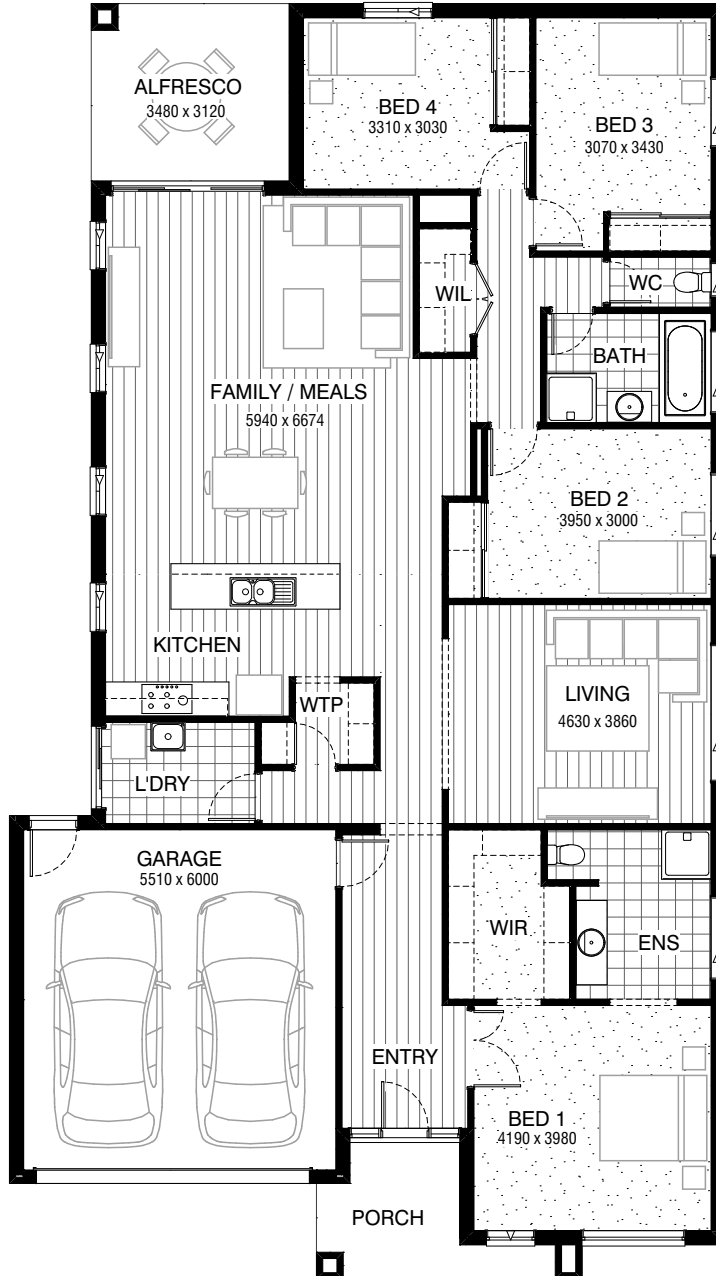
Overall home length 20.99m

| | | |
|--------------|---------------------------|---------------|
| Residence | 181.4m ² | 19.5sq |
| Garage | 36.3m ² | 3.9sq |
| Porch | 7.0m ² | 0.8sq |
| Alfresco | 10.5m ² | 1.1sq |
| Total | 235.2m² | 25.3sq |

Listed details based on Drysdale facade floorplan (illustrated)

Total squares **27.0sq**

 **4**  **2**  **2**



[VIEW OPTIONS](#)

[VIEW INTERNAL SPECIFICATIONS](#)



Click above to experience and customise this home.

Facades available:

Arkley, Drysdale, Haring

Overall home width 12.59m

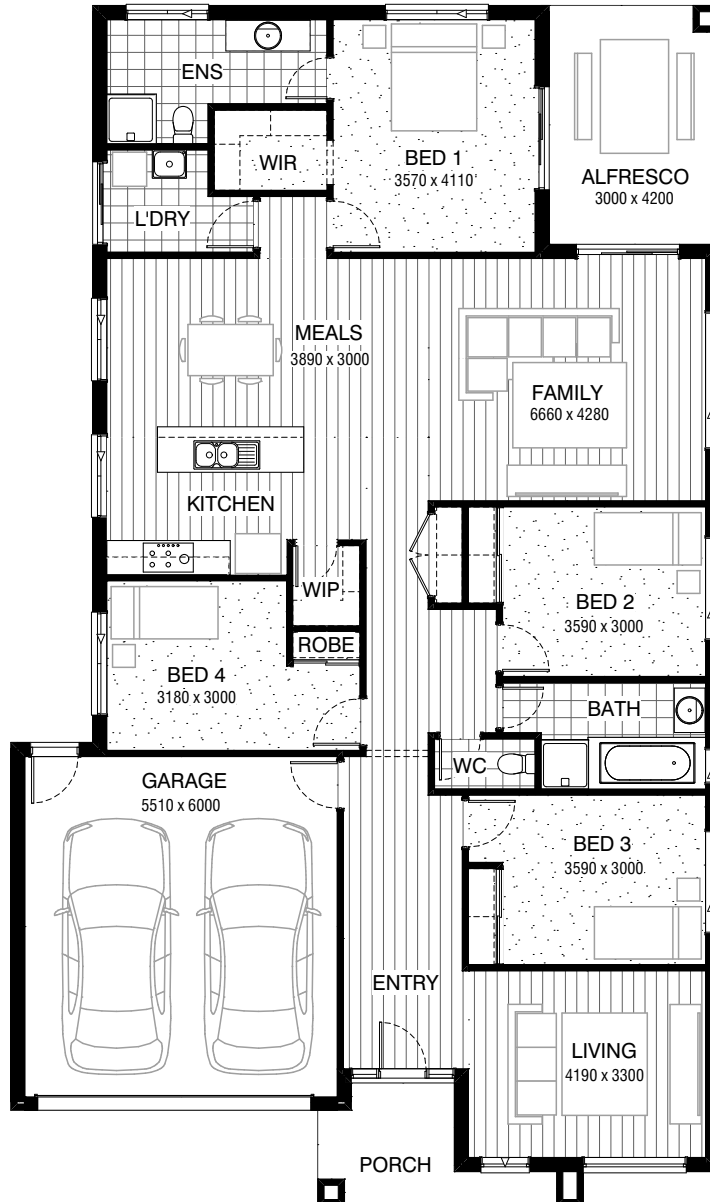
Overall home length 22.43m

| | | |
|--------------|---------------------------|---------------|
| Residence | 1971m ² | 21.2sq |
| Garage | 36.3m ² | 3.9sq |
| Porch | 6.9m ² | 0.7sq |
| Alfresco | 10.9m ² | 1.2sq |
| Total | 251.2m² | 27.0sq |

Listed details based on Drysdale facade floorplan (illustrated)

Total squares **25.2sq**

 **4**  **2**  **2**



[VIEW OPTIONS](#)

[VIEW INTERNAL SPECIFICATIONS](#)



Click above to experience and customise this home.

Facades available:

| | |
|----------------------------|---------------|
| Arkley, Drysdale, Haring | |
| Overall home width | 12.47m |
| Overall home length | 21.11m |

| | | |
|--------------|---------------------------|---------------|
| Residence | 178.9m ² | 19.3sq |
| Garage | 36.3m ² | 3.9sq |
| Porch | 6.3m ² | 0.7sq |
| Alfresco | 12.6m ² | 1.4sq |
| Total | 234.1m² | 25.2sq |

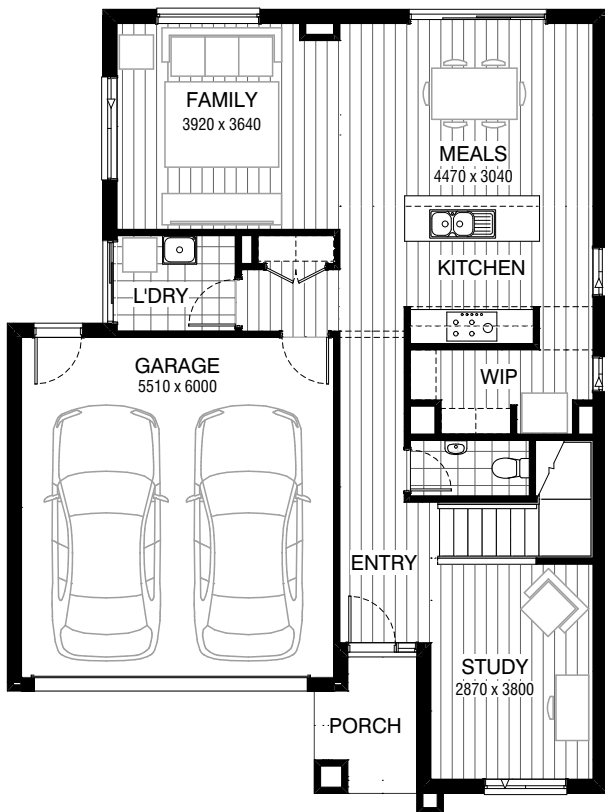
Listed details based on Drysdale facade floorplan (illustrated)



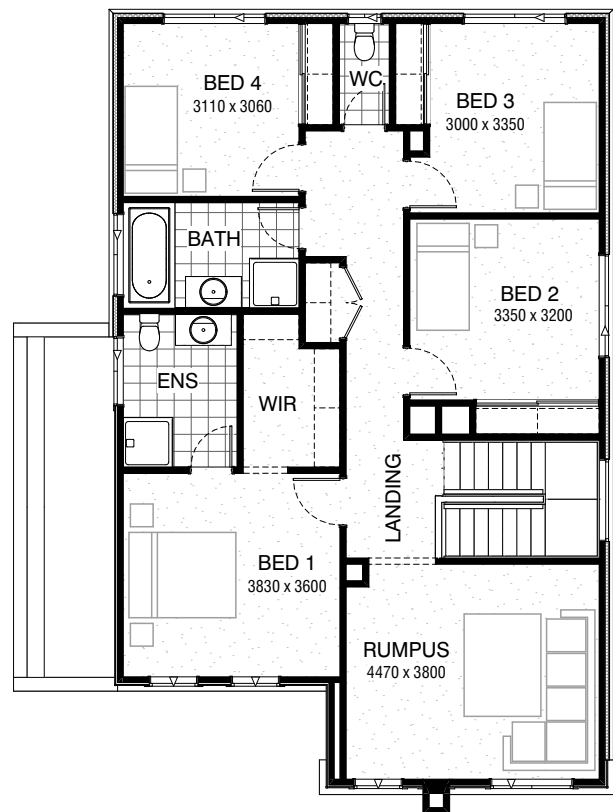
Image is for illustrative purposes only and may contain internal or external option items or furniture not included or available in the Swift Collection. Image shown is the Rydell 235 as displayed at Marigold Estate, Tarniel.

Total squares **25.4sq**

 **4**  **2.5**  **2**



GROUND FLOOR



FIRST FLOOR

double storey

VIEW OPTIONS

VIEW INTERNAL SPECIFICATIONS



Click above to experience and customise this home.

Facades available:

Condor, Matisse, Monet

Overall home width 10.55m

Overall home length 14.15m

Residence 195.5m² 21.1sq

Garage 36.4m² 3.9sq

Porch 4.0m² 0.4sq

Total 235.9m² 25.4sq

Listed details based on Condor facade floorplan (illustrated)

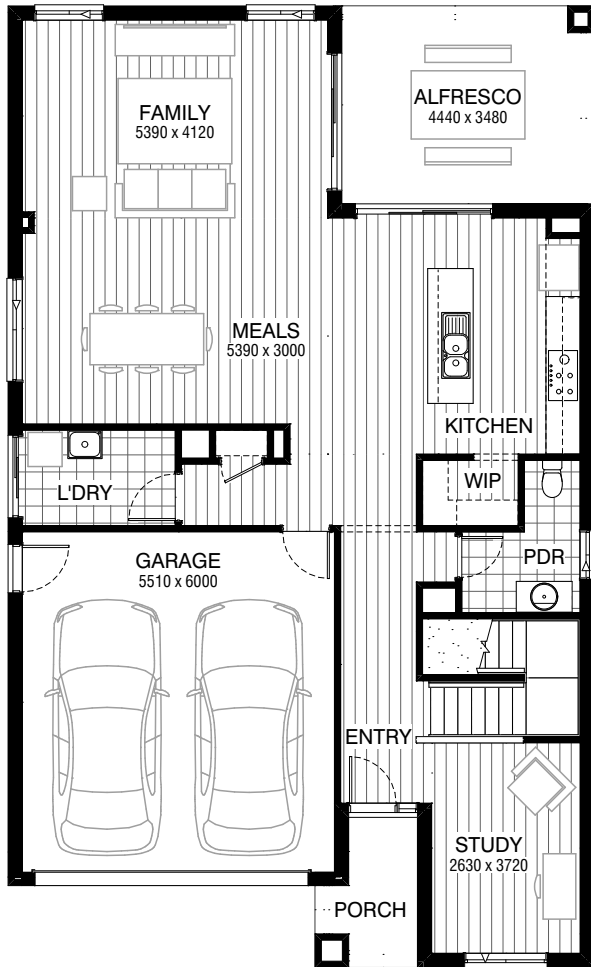
^ This design is suitable for small lot housing code



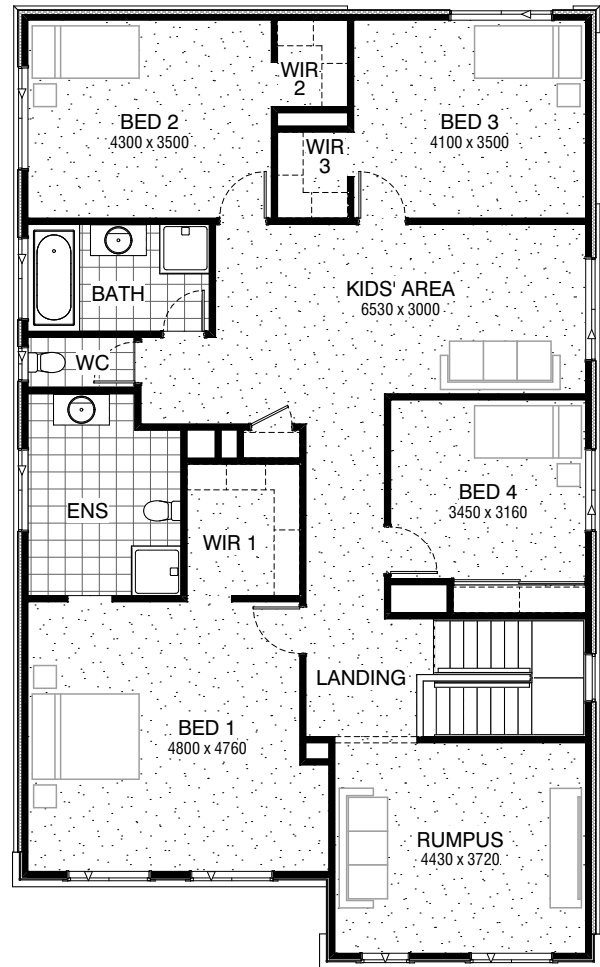
Image is for illustrative purposes only and may contain internal or external option items or furniture not included or available in the Swift Collection. Image shown is the Rydell 235 as displayed at Manifold Estate, Tarniel.

Total squares **35.0sq**

 **4**  **2.5**  **2**



GROUND FLOOR



FIRST FLOOR

[VIEW OPTIONS](#)

[VIEW INTERNAL SPECIFICATIONS](#)



Click above to experience and customise this home.

Facades available:

Condor, Matisse, Monet

Overall home width 10.31m

Overall home length 16.91m

| | | |
|--------------|---------------------------|---------------|
| Residence | 269.5m ² | 29.0sq |
| Garage | 36.1m ² | 3.9sq |
| Porch | 4.0m ² | 0.4sq |
| Alfresco | 15.5m ² | 1.7sq |
| Total | 325.1m² | 35.0sq |

Listed details based on Condor facade floorplan (illustrated)

STEP 2

SELECT YOUR FACADE

SINGLE STOREY FACADE OPTIONS

Our single storey facade options ensure something for everyone. Combinations of brick or stylish timber finishes feature on these statement facade choices. Simply decide on your home design, choose your facade and select a stylish colour scheme that has been put together by our team of interior designers.

A

ARKLEY FACADE



A ARKLEY FACADE - MONACO COLOUR THEME

B

DRYSDALE FACADE



B DRYSDALE FACADE - SILVERSTONE COLOUR THEME

C

HARING FACADE



C HARING FACADE - PANORAMA COLOUR THEME

DOUBLE STOREY FACADE OPTIONS

Our selection of double storey facades range from classic to modern contemporary designs. With clever use of a diverse range of materials, you'll see brick, render, timber and glass in various combinations to achieve street appeal that will be the envy of your neighbourhood!

A **CONDOR FACADE**



A **CONDOR FACADE** - MONACO COLOUR THEME

B **MATISSE FACADE**



B **MATISSE FACADE** - SILVERSTONE COLOUR THEME

C **MONET FACADE**



C **MONET FACADE** - PANORAMA COLOUR THEME

STEP 3 SELECT YOUR COLOURS

EXTERNAL COLOUR SCHEMES

Once you have decided on your home design and facade, select from one of our three stylish outdoor colour schemes. Put together by our team of interior designers you can set the tone for a home you will love coming home to.

A

MONACO

Monaco is as versatile as it is beautiful. Featuring a Hamptons inspired neutral palette of whites, light greys, and soft beiges, Monaco showcases the colours of the Australian coastline and will be the stand out facade of any street scape.

B

SILVERSTONE

Silverstone blends into the natural environment. Darker hues combined with sleek clean lines, this minimal approach creates a scandinavian inspired look. Red and black toned bricks paired together with charcoal undertones ensures breathtakingly simple, yet extremely liveable design.

C

PANORAMA

Panorama's modern and balanced exterior colour palette is designer to suite todays lifestyle. Focusing on simplicity, practicality, and a neutral base, we have taken earthy tones and blended them with accents of muted greys to create this eye catching exterior palette.

UPGRADED COLOUR SCHEME AVAILABLE

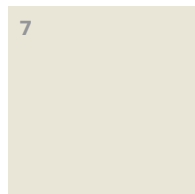
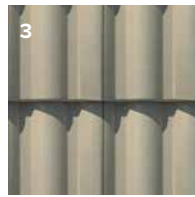
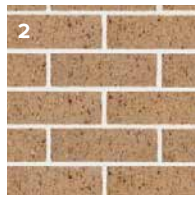
You have the option to select an upgraded exterior colour scheme package, at an additional cost. This will give you a superior selection within each colour sheme. A higher category brick selection, a different roof tile and an upgraded front door..



A MONACO



EXTERIOR COLOUR SCHEME



- 1 MAIN BRICK**
Access Cream
- 2 CONTRAST BRICK**
Austral Access Fawn
- 3 CONCRETE ROOF TILE**
Bristile Silver Gum
- 4 GUTTER, DOWNPIPE, FASCIA**
Colorbond® Shale Grey
- 5 GARAGE DOOR**
Colorbond® Shale Grey
- 6 WINDOWS & DOOR FRAMES**
White
- 7 RENDER 1**
Unitex - Taubmans South Pole
- 8 RENDER 2/CLADDING**
Colorbond® Shale Grey
- 9 FRONT ENTRY DOOR**
Painted Taubmans Grey Matter

EXTERIOR COLOUR UPGRADE PACK



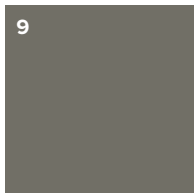
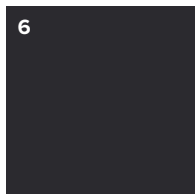
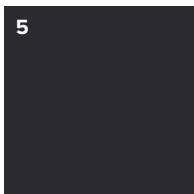
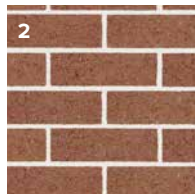
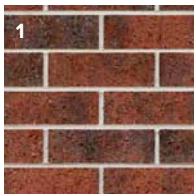
- 10 MAIN BRICK**
Austral Access Ash
- 11 CONTRAST BRICK**
Austral Indulgence Praline

[VIEW EXTERNAL SPECIFICATIONS](#)

B SILVERSTONE

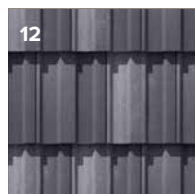
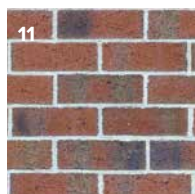
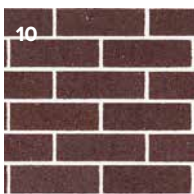


EXTERIOR COLOUR SCHEME



- 1 MAIN BRICK**
Austral Retreat
- 2 CONTRAST BRICK**
Austral Access Chestnut
- 3 CONCRETE ROOF TILE**
Bristile Designer Cool Smoke
- 4 GUTTER, DOWNPIPE, FASCIA**
Colorbond® Monument
- 5 GARAGE DOOR**
Colorbond® Monument
- 6 WINDOWS & DOOR FRAMES**
Monument
- 7 RENDER 1**
Unitex - Basalt
- 8 RENDER 2/CLADDING**
Taubmans Chimney Sweep
- 9 FRONT ENTRY DOOR**
Painted Taubmans Distance

EXTERIOR COLOUR UPGRADE PACK



- 10 MAIN BRICK**
Austral Access Tan
- 11 CONTRAST BRICK**
Austral Melbourne Canterbury
- 12 CONCRETE ROOF TILE**
Bristile Artisan Cool Smoke

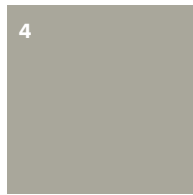
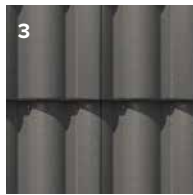
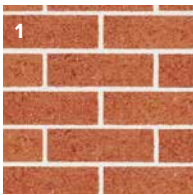
[VIEW EXTERNAL SPECIFICATIONS](#)



PANORAMA



EXTERIOR COLOUR SCHEME



- 1 MAIN BRICK**
Austral Ruby
- 2 CONTRAST BRICK**
Austral Access Ash
- 3 CONCRETE ROOF TILE**
Bristile Designer Storm Grey
- 4 GUTTER, DOWNPIPE, FASCIA**
Colorbond® Dune
- 5 GARAGE DOOR**
Colorbond® Wallaby
- 6 WINDOWS & DOOR FRAMES**
Dune
- 7 RENDER 1**
Unitex - Taubmans Abstract Half
- 8 RENDER 2/CLADDING**
Colorbond® Dune
- 9 FRONT ENTRY DOOR**
Painted Taubmans Dragonstone

EXTERIOR COLOUR UPGRADE PACK



- 10 MAIN BRICK**
Austral Domain Sanctuary
- 11 CONTRAST BRICK**
Austral Indulgence Biscotti
- 12 CONCRETE ROOF TILE**
Bristile Artisan Storm Grey

[VIEW EXTERNAL SPECIFICATIONS](#)



INTERIOR COLOUR SCHEMES

Now select your indoor colour scheme. Each of these stunning colour schemes have been put together by our team of interior designers giving you the choice of a modern, hamptons or scandinavian themed interior.

A

MARINA

Taking colour cues from the traditional Hamptons style Marina features an ensemble of soft neutral colours. Whites with splashes of subtle greys blended with warm timbers and textured surfaces gives you a sophisticated palette with a relaxed beachy vibe.

B

SOCHI

Sochi's modern style showcases a clean monochromatic colour palette offering subtle sophistication. This unique look features blacks and greys that blend seamlessly together with light ashy timbers – Sochi stands out as a refined and captivating palette.

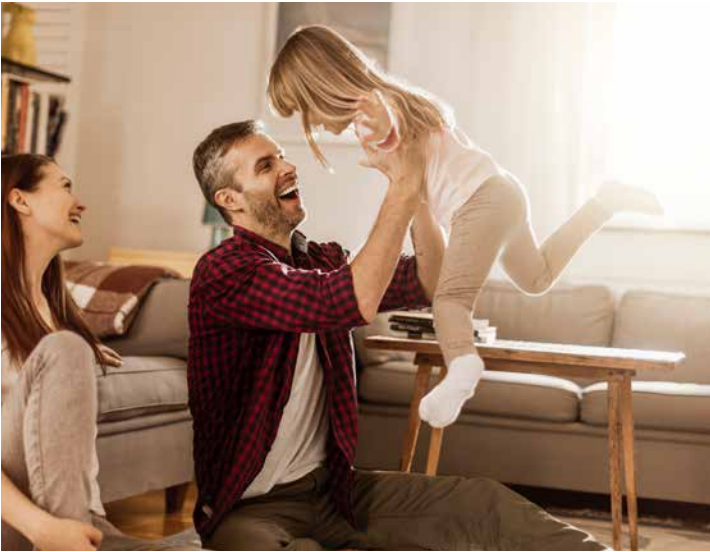
C

WINTON

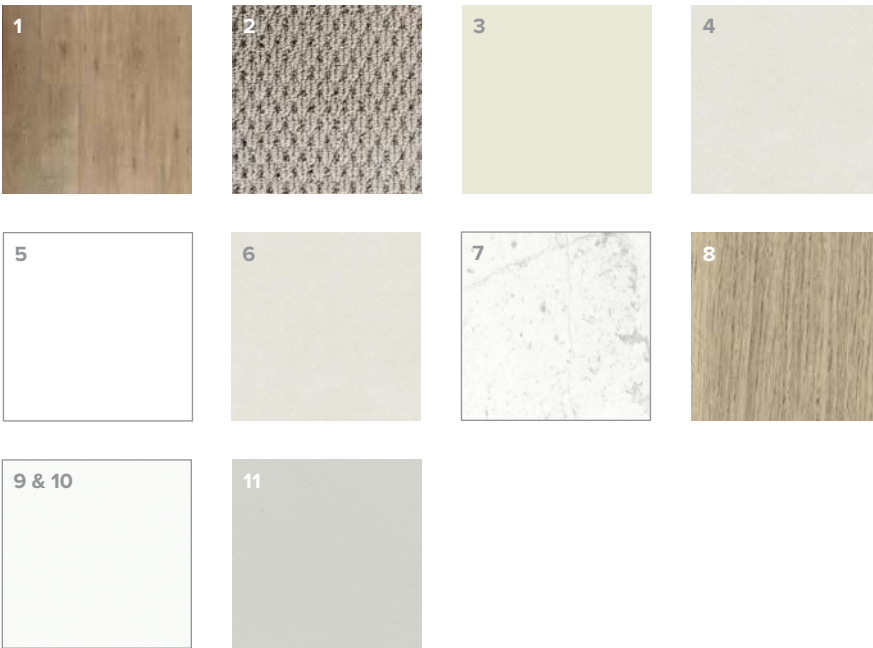
Winton is all about clean simple minimalism without sacrificing beauty. A strong focus on creating warm, airy and inviting spaces for ultimate comfort. Warm natural timbers paired with crisp whites and soft greys creates the ultimate Scandi home that will be comfortable for the entire family.

UPGRADED COLOUR SCHEME AVAILABLE

You also have the option to select an upgraded interior colour scheme package, at an additional cost. This will give you a superior selection within each colour scheme. A higher grade carpet, stone benchtops throughout plus feature tiling will really show off your new home.

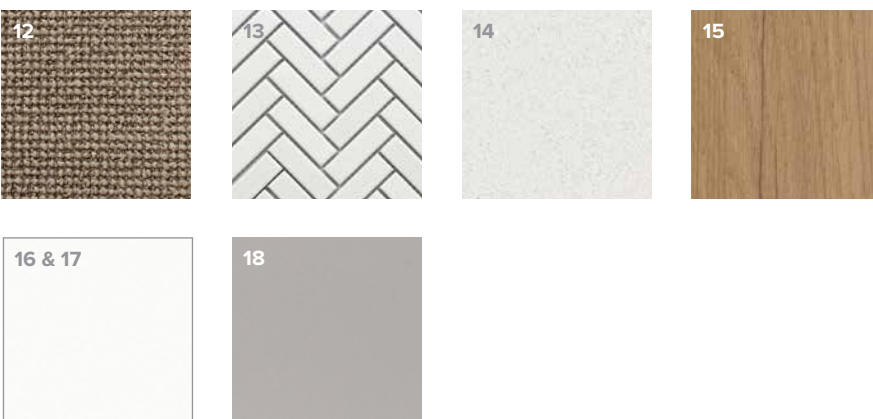


INTERIOR COLOUR SCHEME



- 1 LAMINATE FLOORING - Brooklyn Ridgewood**
To entire dwelling excluding wet areas, porch, garage, alfresco & bedrooms
- 2 CARPET - Burbank 1 Almond**
To all bedrooms & stairs (if applicable)
- 3 INTERNAL PAINT - Taubmans Winter Ice**
(Ceilings Burbank White)
- 4 FLOOR TILES - Outback White**
To ensuite, laundry, WC & bathroom(s)
- 5 SPLASHBACK TILE - White Gloss**
To kitchen & laundry
- 6 WALL TILE - Outback White**
To bathroom & ensuite
- 7 BENCHTOP - Formica Pure Marble**
To kitchen, bathroom & ensuite
- 8 BASE CABINETS - Formica Idyllic**
To bathroom & ensuite
- 9 OVERHEAD CUPBOARDS - Formica Snowdrift**
To kitchen
- 10 BASE CABINETS - Formica Snowdrift**
To kitchen rear bench
- 11 BASE CABINETS - Formica Seal Grey**
To kitchen island bench

INTERIOR COLOUR UPGRADE PACK



- 12 CARPET - Burbank 2 Mews**
To all bedrooms & stairs (if applicable)
- 13 FEATURE TILE - Herringbone White Gloss Mosaic**
To kitchen splashback plus back of bathroom & ensuite shower niches
- 14 STONE BENCHTOP - Bianco Norte**
To ensuite, laundry, bathroom(s) & kitchen
- 15 BASE CABINETS - Laminex Natural - Planked Urban**
To bathroom & ensuite
- 16 BASE CABINETS - Laminex Natural - Polar White**
To laundry & kitchen rear bench
- 17 OVERHEAD CUPBOARDS - Laminex Natural - Polar White**
To kitchen
- 18 BASE CUPBOARDS - Laminex Natural - Fox**
To kitchen island bench



INTERIOR COLOUR SCHEME



- 1 LAMINATE FLOORING - Brooklyn Columbia**
To entire dwelling excluding wet areas, porch, garage, alfresco & bedrooms
- 2 CARPET - Burbank 1 Ash Grey**
To all bedrooms & stairs (if applicable)
- 3 INTERNAL PAINT - Taubmans Winter Ice**
(Ceilings Burbank White)
- 4 FLOOR TILES - Cavala Dark Grey**
To ensuite, laundry, WC & bathroom(s)
- 5 SPLASHBACK TILE - Silver Grey Matt**
To kitchen & laundry
- 6 WALL TILE - Cavala Dark Grey**
To bathroom & ensuite
- 7 BENCHTOP - Formica Cocoa Sand**
To kitchen, bathroom & ensuite
- 8 BASE CABINETS - Formica Asphalt**
To bathroom & ensuite
- 9 OVERHEAD CUPBOARDS - Formica Seal Grey**
To kitchen
- 10 BASE CABINETS - Formica Seal Grey**
To kitchen rear & island bench

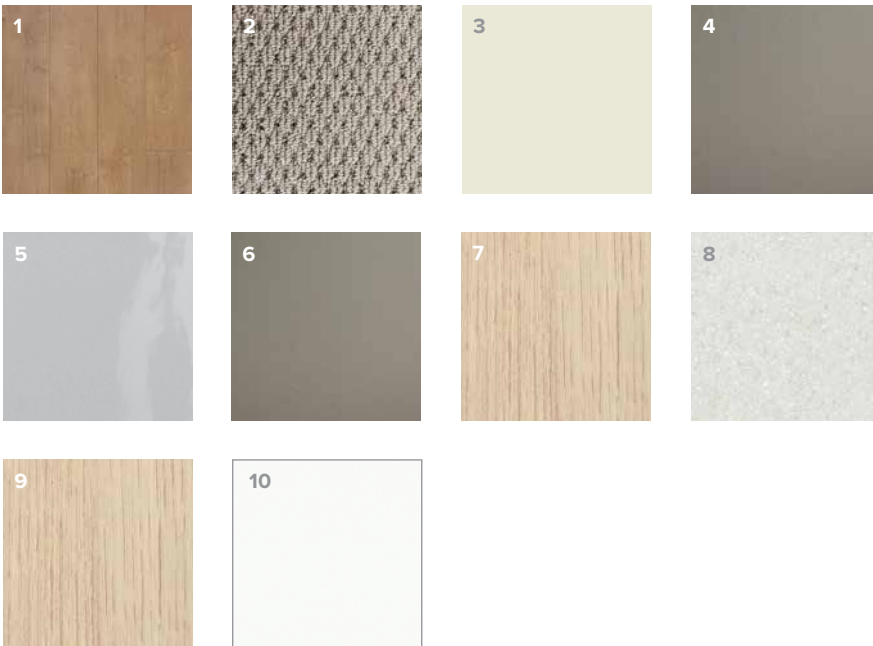
INTERIOR COLOUR UPGRADE PACK



- 11 CARPET - Burbank 2 Matter**
To all bedrooms & stairs (if applicable)
- 12 FEATURE TILE - Kit Kat White Gloss Mosaic**
To kitchen splashback plus back of bathroom & ensuite shower niches
- 13 STONE BENCHTOP - Bianco Norte**
To ensuite, laundry, bathroom(s) & kitchen
- 14 BASE CABINETS - Laminex - Natural Stormcloud**
To bathroom & ensuite
- 15 BASE CABINETS & OVERHEAD CUPBOARDS - Laminex - Natural Pewter**
To laundry & kitchen

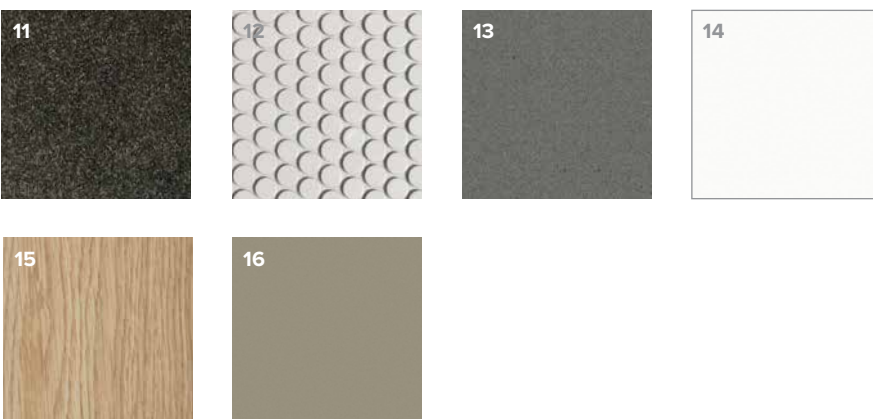


INTERIOR COLOUR SCHEME



- 1 LAMINATE FLOORING - Brooklyn Mapleton**
To entire dwelling excluding wet areas, porch, garage, alfresco & bedrooms
- 2 CARPET - Burbank 1 Almond**
To all bedrooms & stairs (if applicable)
- 3 INTERNAL PAINT - Taubmans Winter Ice**
(Ceilings Burbank White)
- 4 FLOOR TILES - Cavala Light Grey**
To ensuite, laundry, WC & bathroom(s)
- 5 SPLASHBACK TILE - Silver Grey**
To kitchen & laundry
- 6 WALL TILE - Cavala Light Grey**
To bathroom & ensuite
- 7 BENCHTOP & BASE CABINETS - Formica Refined Oak**
To bathroom & ensuite
- 8 BENCHTOP - Formica Ice Quarstone**
To kitchen
- 9 OVERHEAD CUPBOARDS - Formica - Refined Oak**
To kitchen
- 10 BASE CABINETS - Formica Snowdrift**
To kitchen

INTERIOR COLOUR UPGRADE PACK



- 11 CARPET - Burbank 2 Scale**
To all bedrooms & stairs (if applicable)
- 12 FEATURE TILE - Penny Round White Matt Mosaic**
To kitchen splashback plus back of bathroom & ensuite shower niches
- 13 STONE BENCHTOP - Gris Expo**
To ensuite, laundry, bathroom(s) & kitchen
- 14 BASE CABINETS - Laminex - Natural Polar White**
To laundry & kitchen
- 15 OVERHEAD CUPBOARDS - Laminex - Natural Classic Oak**
To laundry & kitchen
- 16 BASE CABINETS - Laminex - Natural Possum**
To ensuite & bathroom

MORE CHOICE & ADDITIONAL OPTIONS

Our new and improved Swift Collection now offers even more choice with these convenient add ons. Choose one or more of the following options and make your Swift home even more homely.

DRIVEWAY

Give your home a practical and unique finish with the option of an exposed aggregate driveway. Includes up to 40m² in a natural mix.



REMOTE TO GARAGE

Get the convenience of an automatic garage door with remote control and three handsets..



HEATING & COOLING

Warm up or cool down with this complete heating & cooling package. This package includes deducted heating and evaporative cooling* throughout the entire home. Speak to your New Home Consultant to find out more.

*Within a double storey design, evaporative cooling will only be installed to the first floor.



BLINDS THROUGHOUT YOUR HOME

This blind package includes sheer roller blind and a block out roller blind to all windows (excluding front entry sidelights, staircase and splashback windows) of your home. Pricing is dependant on your chosen floorplan, chat to your New Home Consultant for more information.



Block Out Roller Blind
Zen - Illusion



Sheer Roller Blind
Neotec - White

RAISED CEILING HEIGHT

Update your ceiling height from the standard to 2590mm. (Only applicable to single storey designs)



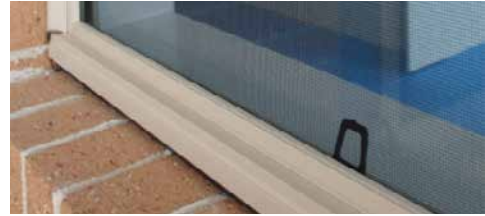
ELECTRICAL OPTION

Choose to upgrade from standard batten lighting to LED downlights throughout your entire home for that ultimate finish. Speak to your New Home Consultant to find out more.



FLYSCREENS TO WINDOWS

Keep unwanted pests outside by having flyscreens installed to all openable windows throughout your home. (frames will be the same colour as the window frame and mesh is black)



DISHWASHER

Get the convenience of a freestanding stainless steel Franke dishwasher, supplied and installed in your new home.



TV ANTENNA

CAPPED WATER POINT TO FRIDGE

SARKING TO COLORBOND®

CAPPED GAS POINT FOR BBQ

WHIRLYBIRD ROOF VENT

YOUR PLAN

Here's a table to help you plan out your new Swift Collection Home. Speak to a New Home Consultant, chat to our online team or email enquiries@burbank.com.au for more information and pricing details.

VISIT OUR WEBSITE TO START PLANNING YOUR HOME

| | | | |
|------------------------------------|---------|------------------------------------|----------------|
| FLOORPLAN CHOSEN..... | \$..... | HEATING & COOLING OPTION | \$..... |
| FLOORPLAN OPTIONS | \$..... | BLIND PACKAGE OPTION | \$..... |
| | \$..... | RAISED CEILING HEIGHT | \$..... |
| | \$..... | ELECTRICAL PACKAGE OPTION | \$..... |
| | \$..... | FLYSCREENS TO WINDOWS OPTION | \$..... |
| | \$..... | DISHWASHER OPTION | \$..... |
| FACADE..... | \$..... | TV ANTENNA OPTION | \$..... |
| EXTERIOR COLOURBOARD..... | \$..... | CAPPED WATER POINT TO FRIDGE | \$..... |
| EXTERIOR COLOURBOARD UPGRADE | \$..... | SARKING TO COLORBOND® OPTION | \$..... |
| INTERIOR COLOURBOARD | \$..... | CAPPED GAS POINT FOR BBQ | \$..... |
| INTERIOR COLOURBOARD UPGRADE..... | \$..... | WHIRLYBIRD ROOF VENT..... | \$..... |
| DRIVEWAY OPTION | \$..... | | |
| REMOTE TO GARAGE | \$..... | TOTAL ESTIMATED SPEND..... | \$..... |



“

Our mission is to create places
for people to call home.

”

Burbank 
#noplacelikehome

T 13 BURBANK

E enquiries@burbank.com.au

W burbank.com.au

 **BurbankHomes**

 **BurbankLiving**

 **Burbank**



**Visit our website to start
planning your Swift Collection home**

- 1** Use your smart phone/tablet camera
- 2** Hold camera over QR code for 2-3 seconds
- 3** See notification pop-up with web link

National Head Office

Burbank Business Park
36 Aberdeen Road
Altona, Victoria

South Australian Office

134 Fullarton Road
Rose Park
South Australia

New South Wales Office

Level 3, 88 Phillip Street
Parramatta
NSW

Queensland Office

Unit 11 / 1-15 Lexington Road
Underwood
Queensland

The Burbank Swift Collection is subject to and conditional upon the following: 1) The customer pays the full initial deposit monies to Burbank Australia Pty Ltd ('Burbank') and completes all paper works required by Burbank; 2) the property is expected to have its own respective certificate of title within twelve (12) months from the date of when the initial deposit is paid and; 3) the property is located in an estate that accepts the Swift home design the customer has selected. The list of estates accepting of the Burbank Swift Collection is extensive and is available at all Burbank VIC display offices. Display office locations are available to view at www.burbank.com.au/victoria/display-homes. The '7 business days to contract' guarantee will come into effect once all required paperwork has been approved and accepted by Burbank's state Operations team. Once paperwork and customer's file has been accepted by Burbank's state Operations team, the customer will be issued their building contract within seven (7) business days. The Burbank Swift Collection is only applicable and available in the state of Victoria, Australia. Burbank reserves the right to alter or terminate this collection at any time without notice. All floorplans, façade images and photographs have been used for illustrative purposes and should be used as a guide only. Builders' registration number CDB-U-52603. REPRINT NOVEMBER 2021