

# ALMEDA 344

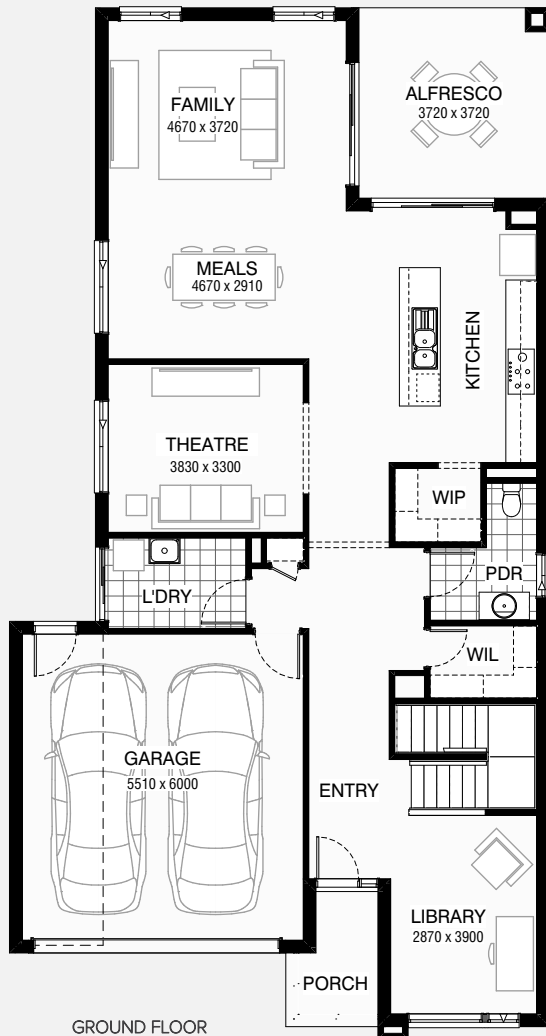
🏠 4 🛏 2.5 🚗 2

Total squares 37.2sq

**B**  
SERIES

Minimum Lot Width  
12.5m

Minimum Lot Length  
28.0m



GROUND FLOOR



FIRST FLOOR

**Design Dimensions**  
10,550mm(W) x 20,150mm(L).

**Facade Choices**  
Fullerton, Huntington, Moorpark,  
Oakwood, Palisades, Redlands, Riverside.  
Details based on Riverside façade floorplan (Illustrated)

DESIGN DIMENSIONS

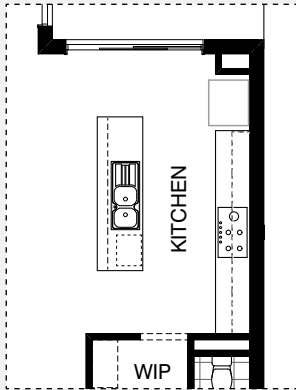
Residence	192.7m <sup>2</sup>	21.3sq
Garage	36.6m <sup>2</sup>	3.9sq
Porch	4.0m <sup>2</sup>	0.4sq
Alfresco	13.8m <sup>2</sup>	1.5sq
<b>Total</b>	<b>345.2m<sup>2</sup></b>	<b>37.2sq</b>



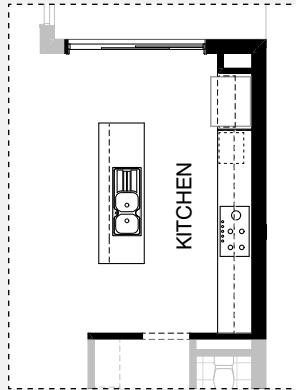
\*Copyright conditions. All photos and illustrations are representative only. Floor plans and specifications may be varied by Burbank without notice, the dimensions are diagrammatic only and a Building Contract with final drawings will display correct dimensions and detail. All designs are the property of Burbank and must not be used, reproduced, copied or varied, wholly or in part without written permission from an authorised Burbank representative. Copyright Burbank Australia Pty Ltd. ABN 91 007 099 872. Builders Registration Number CDB-U-52603.



### KITCHEN OPTIONS

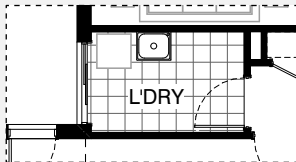


Master Kitchen Design

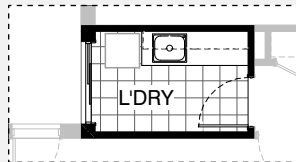


K01

### LAUNDRY OPTIONS

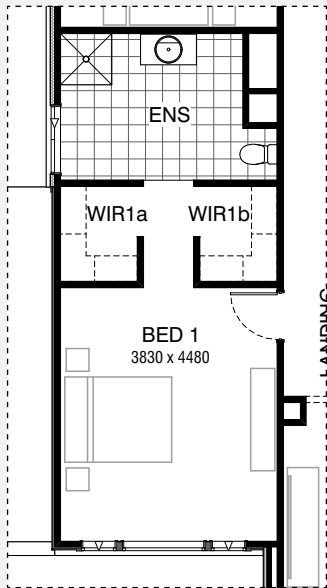


Master Laundry Design

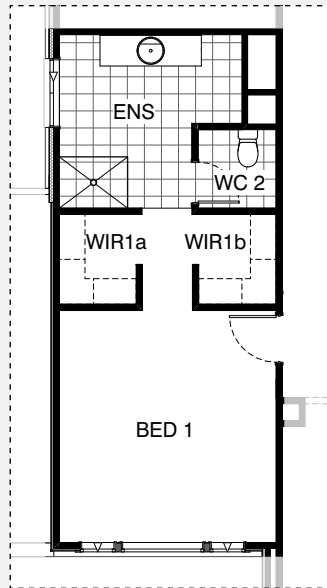


LD01

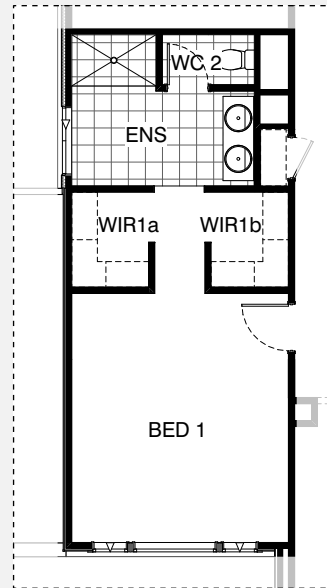
### ENSUITE OPTIONS



Master Ensuite Design

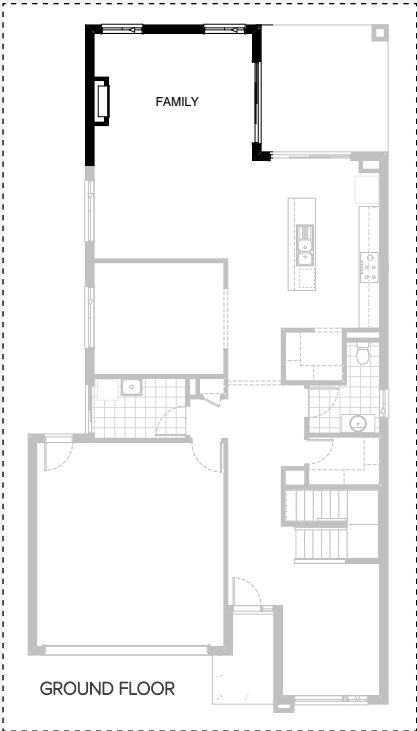


EN01

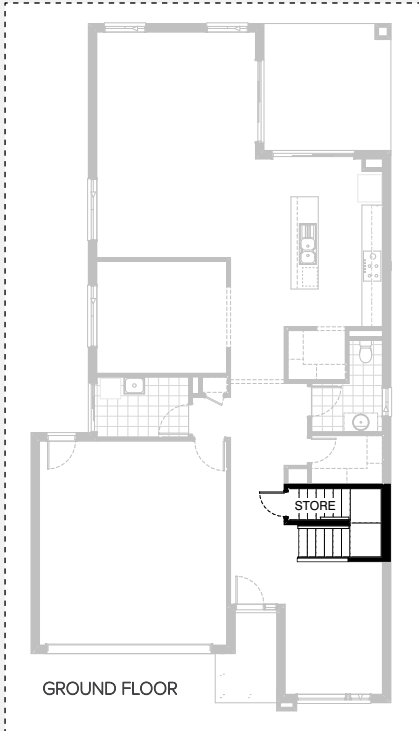


EN02

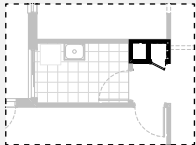
INTERNAL OPTIONS



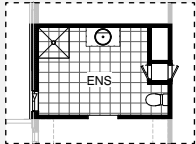
IN01



IN02

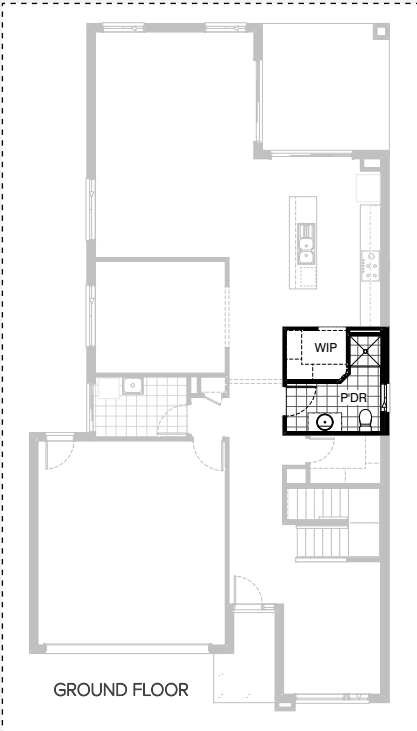


GROUND FLOOR

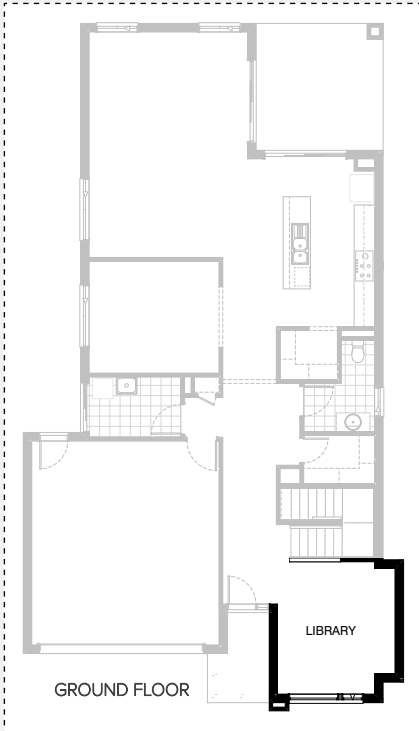


FIRST FLOOR

IN03

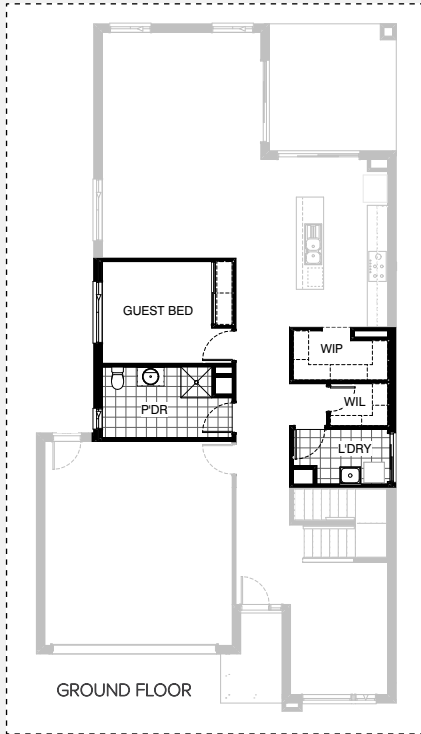


IN04

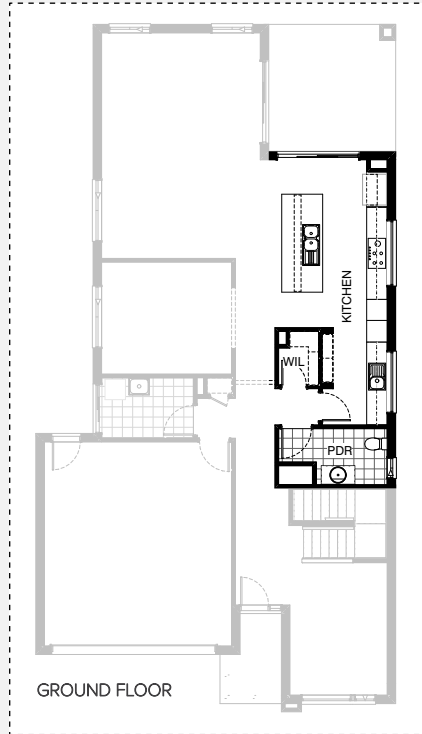


IN05

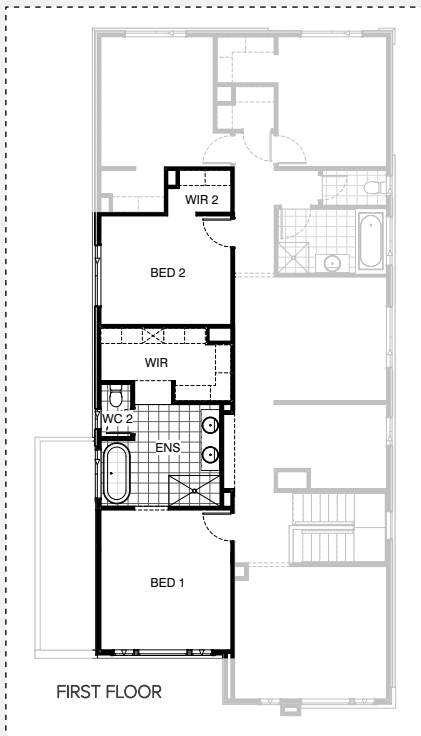
## INTERNAL OPTIONS



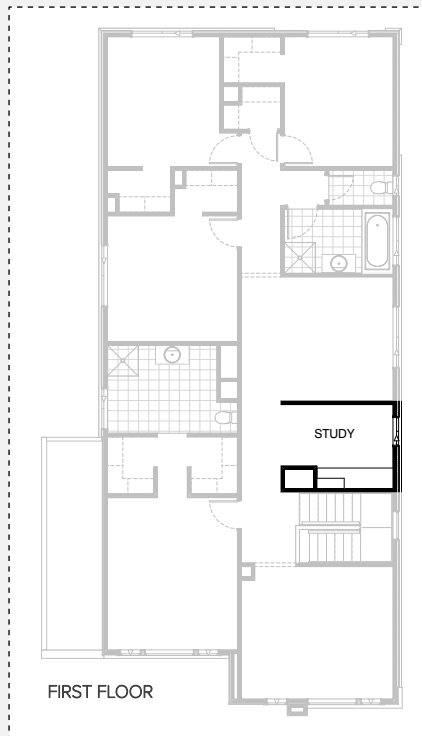
IN06



IN07

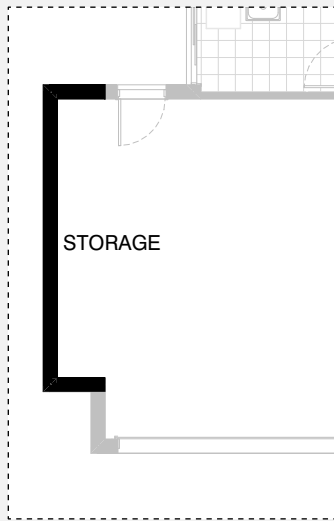


IN08

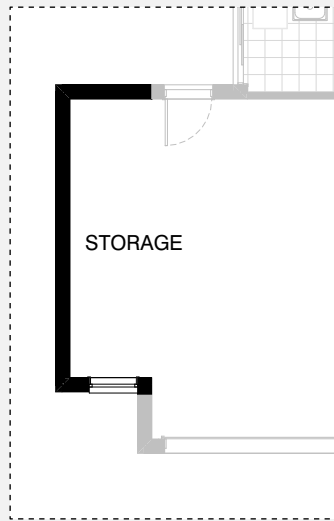


IN09

## GARAGE OPTIONS



G01



G02



# ALMEDA 344

## OPTION DESCRIPTIONS

### Kitchen Option 01

Provide Kitchen upgrade with laminated open shelf above refrigerator space, 1No. laminated MW. provision with pot drawer below, 2No. 700mm base cabinets, 1No. 900mm base cabinet, 1No. 400mm base cabinet, 1No. 600mm pot drawers, 2No. 700mm overhead cabinets, 2No. 600mm overhead cabinets, 1No. 450mm drawers and 1No. laminated DW. provision with additional tiled splashback and benchtop to suit. Provide 1No. 900mm underbench oven with 900mm gas cooktop & retractable rangehood above

### Laundry Option 01

Provide Laundry Option with additional s.s. inset trough, 2No. 900mm base cabinets, 2No. 900mm overhead cabinets and additional tiled splashback and benchtop to suit.

### Internal Option 01

Provide Real Flame Inspire 900 gas fireplace 400mm off floor level in a 1400mm x 420mm boxed out plaster wall with a 4 sided black fascia to Family room side wall.

### Internal Option 02

Provide Store room below stair including 720mm flush panel hinged door, plaster lined walls and raked plaster ceiling on battens with square set cornice including additional light point.  
NOTE: Flooring not included

### Internal Option 03

Provide Laundry Chute and delete Linen downstairs with 1No. 420mm flush panel hinged door.

### Internal Option 04

Provide Powder upgrade with additional 900mm x 900mm recessed shower base, relocate hinged door, toilet and vanity basin to suit and increase WIP by 80mm and angle stud wall to suit.

### Internal Option 05

Provide Library option by extending Library wall width by 600mm with brick parapet flat roof above.  
Increases area by 2.15m<sup>2</sup>.  
Increases width by 600mm.

### Internal Option 06

Provide Guest Bedroom option in lieu of Theatre including additional sliding robe doors and plaster lined robe with 1No. hanging rail and shelf. Relocate Laundry and W.I.L with Powder and provide additional 1No. 900mm x 900mm recessed shower base, 1No. 782mm wide vanity unit in lieu of standard 1No. 982mm wide vanity unit, 1No. 870mm flush panel hinged door and 1No. 1027mm x 610mm aluminium sliding window in lieu of standard 1No. 1800mm x 850mm window.

### Internal Option 07

Provide Kitchen upgrade including Powder and W.I.L redesign, additional 820mm flush panel door to Butlers Pantry, 300mm deep plaster bulkhead above Butlers Pantry shelves, Provide 4No. 800mm base cabinets, 4No. 900mm base cabinets, 1No. 450mm drawer unit, 1No. DW. provision, 1No. open shelf above fridge space with 16mm laminated end panel, 2No. 900mm overhead cabinets, 3No. 800mm overhead cabinet, Provide 1No. 900mm gas cooktop & retractable rangehood above, 4No. 300mm deep shelves to Butlers Pantry, additional single bowl sink, 2No. wall oven towers with pot drawers below and open shelf and cabinets above, 2no 600mm wall ovens, 1200mm deep benchtop to island bench, 1No. 514mm x 1930mm fixed aluminium window, 1No. 514mm x 1810mm fixed aluminium window to splashback including additional tiled splashback to suit. Provide 1No. 1800mm x 610mm aluminium sliding window in lieu of standard 1No. 1800mm x 850mm window.

### Internal Option 08

Provide Ensuite and W.I.R upgrade including reduce Bed 2 by 500mm and reduce Bed 1 by 360mm and redesign to suit including 1500mm x 900mm tiled shower base, 1780mm freestanding bath, 1782mm vanity unit with double bowl, separate WC with additional 720mm flush panel door, additional 1027mm x 610mm sliding window, 1200mm x 1450 aluminium sliding window in lieu of 1200mm x 1210mm aluminium sliding window to Ensuite, 600mm robe unit with double shoe shelves and double hanging rail, additional 450mm shelf and hanging rail to suit, alcove area adjacent to Study with 300mm deep bulkhead and 300mm deep by 680mm wide bulkhead to W.I.R entry.

### Internal Option 09

Provide Study upgrade including increase return air duct width by 70mm and provide 32mm by 600mm deep laminate benchtop with 2No. drawer unit, 1No. 800mm by 300mm deep long floating shelf.

### Ensuite Option 01

Provide Ensuite upgrade with additional site built plaster lined walls to WC with 1No. 720mm flush panel hinged door, 1200mm x 900mm tiled shower base, 1782mm wide vanity unit in lieu of standard. Decrease Bed 1 by 380mm to 4100mm x 3830mm, decrease W.I.R 1a/b by 90mm and increase Ensuite / WC by 470mm to suit.

### Ensuite Option 02

Provide Ensuite upgrade with site built plaster lined walls to WC with 1No. 720mm flush panel hinged door. Provide 1No. 1482mm wide vanity unit with 2No. basins, 1No. 1480 x 900mm tiled shower base in lieu of standard and additional 1No. linen cupboard with 1No. 720mm flush panel hinged door to suit. Increase Ensuite length by 80mm and reduce Bed 1 to suit.

### Garage Option 01

Provide extension to Garage to create additional Storage area.  
Increases area by 4.48m<sup>2</sup>.  
Increases width by 840mm.

### Garage Option 02

Provide extension to Garage to create Storage area including additional window to suit.  
Increases area by 7.78m<sup>2</sup>.  
Increases width by 1440mm.

