

LOGAN | 260

4 2.5 2

IDEAL LOT WIDTH

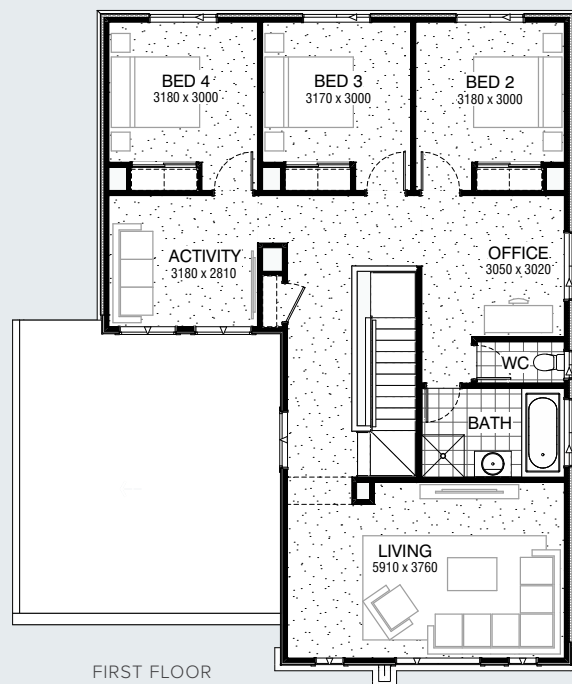
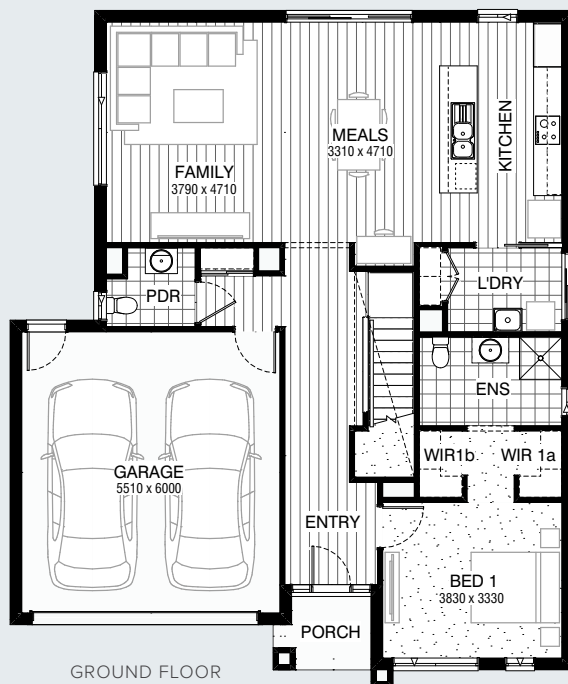
14m

IDEAL LOT LENGTH

21m



SERIES



Facades Available:

Acacia (illustrated), Avondale,
Esplanade, Belleview, Brookwater

House Dimensions

Total Width 11,990mm
Total Length 14,390mm

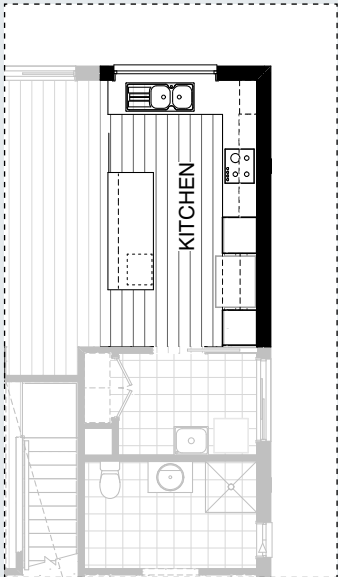
Design Dimensions

Ground Floor	111.7m ²	12.0sq
First Floor	109.0m ²	11.7sq
Garage	36.5m ²	3.9sq
Porch	3.0m ²	0.3sq
Total	260.2m²	28.0sq

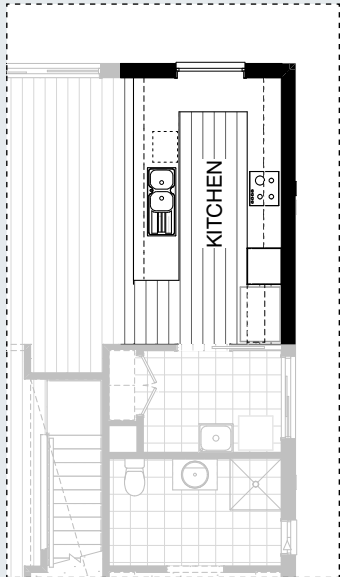
FLOORPLAN OPTIONS



KITCHEN OPTIONS

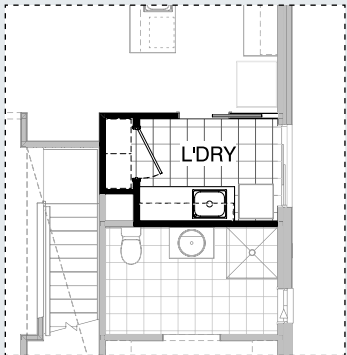


K01



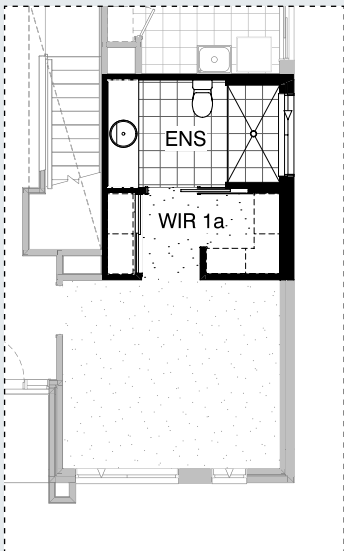
K02

LAUNDRY OPTION



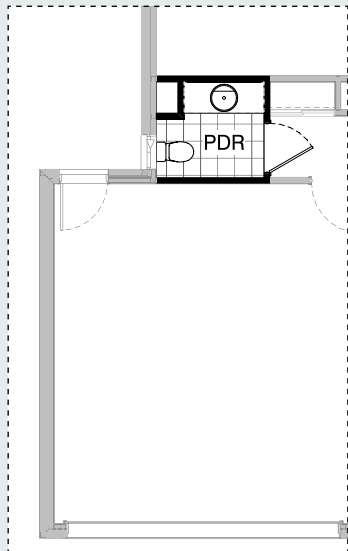
L01

ENSUITE OPTION

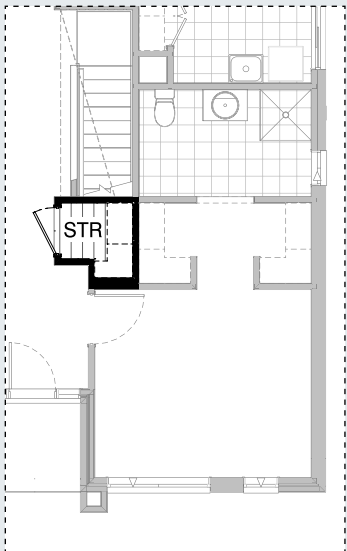


EN01

INTERNAL OPTIONS



IN01

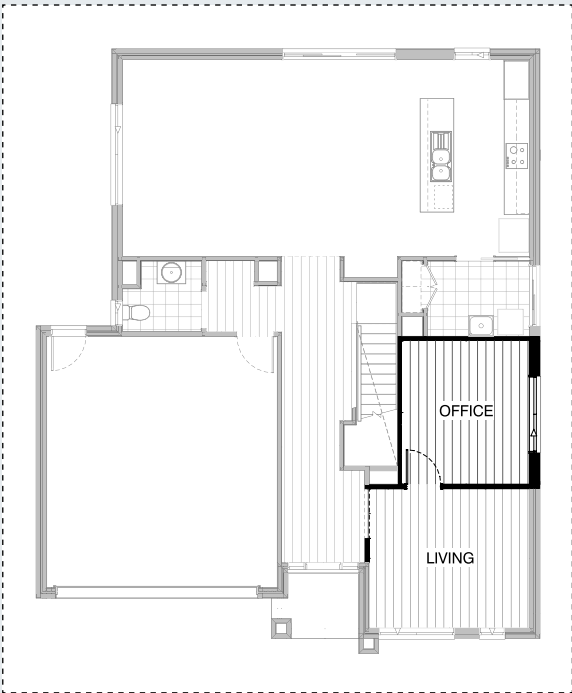


IN02

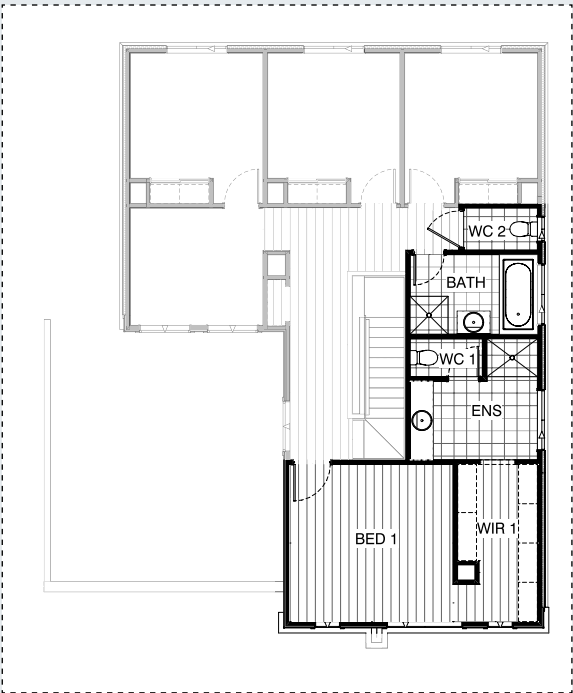
FLOORPLAN OPTIONS



INTERNAL OPTIONS



IN03 GF

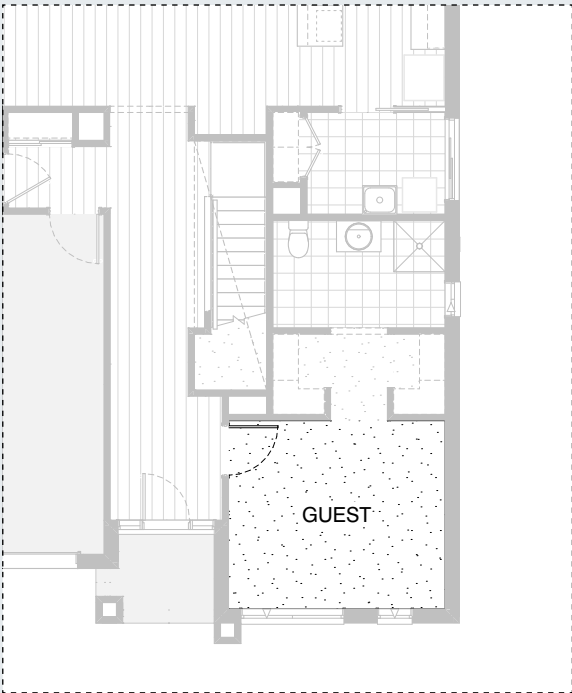


IN03 FF

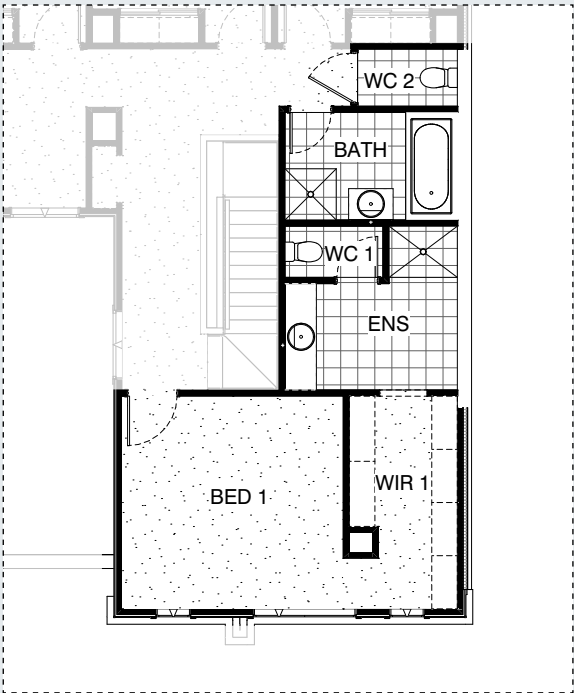
FLOORPLAN OPTIONS



INTERNAL OPTIONS



IN04 GF



IN04 FF

OPTION DESCRIPTIONS

KITCHEN OPTIONS

Kitchen Option 01

Provide "L" shape Kitchen upgrade option, including: Kitchen.

1No. 900mm base cupboard, 1No. 900mm blind base cupboard with 450mm door, 2No. 450mm base cupboards, 2No. 150mm base cupboards, 2No. 450mm overhead cupboards, 1No. 900mm retractable rangehood, 2No. 600mm full height cupboards, 2No. 300mm laminate shelving, 1No. 600mm under-bench oven with 600mm cooktop, 1No. open shelf over Ref space, D/W provision, Double bowl sink. 1No. 1200mm x 1810mm Aluminium fixed window with no bottom reveal in lieu of standard. Island. 1No. 900mm base cupboard, 1No. 450mm set of drawers, microwave provision with pot drawer.

Kitchen Option 02

Provide "U" shape Kitchen upgrade option, including: Kitchen

1No. 900mm base cupboard, 3No. 600mm base cupboards, 1No. 600mm under-bench oven with 600mm cooktop, 2No. 150mm base cupboards, 2No. 450mm corner base cupboards, 1No. 450mm set of drawers, 2No. 600mm overhead cupboards, 1No. 900mm retractable rangehood, 1No. 800mm laminate shelving unit, 1No. 600mm full height cupboard, 1No. open shelf over Ref space, microwave provision with pot drawer, D/W provision, Double bowl sink. 1200mm x 1210mm Aluminium fixed window with no bottom reveal in lieu of standard.

LAUNDRY OPTION

Laundry Option 01

Provide "U" shape Kitchen upgrade option, including: Kitchen

1No. 900mm base cupboard, 3No. 600mm base cupboards, 1No. 600mm under-bench oven with 600mm cooktop, 2No. 150mm base cupboards, 2No. 450mm corner base cupboards, 1No. 450mm set of drawers, 2No. 600mm overhead cupboards, 1No. 900mm retractable rangehood, 1No. 800mm laminate shelving unit, 1No. 600mm full height cupboard, 1No. open shelf over Ref space, microwave provision with pot drawer, D/W provision, Double bowl sink. 1200mm x 1210mm Aluminium fixed window with no bottom reveal in lieu of standard.

ENSUITE OPTIONS

Ensuite Option 01

Provide Ensuite upgrade option, including: 1No. 870 cavity slider door and 350mm x 1450mm Aluminium sliding window in-lieu of standard, wall to wall tiled shower with Nib walls each side, and 1782mm vanity with single basin including 1 row tiling beneath mirror to suite wall-to-wall benchtop including returns. Revert WIR1b to robe with sliding doors and increase WIR1a.

INTERNAL OPTIONS

Internal Option 01

Provide Powder upgrade option, including: 1No. 1282mm vanity with single basin including 1 row tiling beneath mirror to suite wall-to-wall benchtop including returns. Increase void to suit.

Internal Option 02

Provide Storage area under the staircase with No. 820mm hinged door and 4No. 450mm wide shelving. Note: additional wallis required to accomodate.

Internal Option 03 GF

Provide Bed 1 with ensuite and WIR to first floor by relocating office and Living to ground floor. Bathroom and WC relocated closer to the bedrooms.

Internal Option 03 FF

Provide Bed 1, ensuite and WIR to first floor, including:

Ensuite Enclosed WC with 1No. 720mm hinged door, 1782mm vanity with single basin including 1 row tiling beneath mirror to suit wall-to-wall benchtop including returns and 1200mm x 900mm wall to wall shower. Bed 1 Additional stud wall with 1No. 870mm hinged door. WIR 1 2No. 450mm shelving with hanging rail below, Heating stack relocated.

Notes

- Relocate office and Living to ground floor.
- Bathroom and WC relocated closer to the bedrooms.
- Additional balustrade required.

Internal Option 04 GF

Provide Bed 1, ensuite and WIR to first floor and rename ground floor Bed 1 to Guest, including:

Ensuite Enclosed WC with 1No. 720mm hinged door, 1782mm vanity with single basin including 1 row tiling beneath mirror to suit wall-to-wall benchtop including returns and 1200mm x 900mm wall to wall shower. Bed 1 Additional stud wall with 1No. 870mm hinged door. WIR 1 2No. 450mm shelving with hanging rail below, Heating stack relocated.

Notes

- Relocate office and Living to ground floor.
- Bathroom and WC relocated closer to the bedrooms.
- Additional balustrade required.

Internal Option 04 FF

Provide Bed 1, ensuite and WIR to first floor, including:

Ensuite Enclosed WC with 1No. 720mm hinged door, 1782mm vanity with single basin including 1 row tiling beneath mirror to suit wall-to-wall benchtop including returns and 1200mm x 900mm wall to wall shower. Bed 1 Additional stud wall with 1No. 870mm hinged door. WIR 1 2No. 450mm shelving with hanging rail below, Heating stack relocated.

Notes

- Relocate office and Living to ground floor.
- Bathroom and WC relocated closer to the bedrooms.
- Additional balustrade required.