

**Facades available:**

Coastal, Delta, Kingston, Nouveau	
Salisbury, Traditional, York	
<b>Overall home width</b>	11,270mm
<b>Overall home length</b>	16,990mm

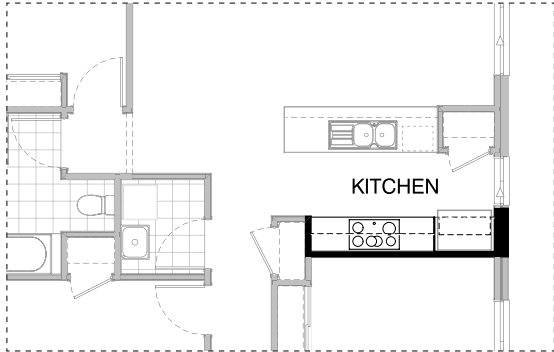
Residence	108.3m <sup>2</sup>	11.7sq
Garage	37.4m <sup>2</sup>	4.0sq
Porch	3.4m <sup>2</sup>	0.4sq
Alfresco	13.2m <sup>2</sup>	1.4sq
<b>Total</b>	<b>162.3m<sup>2</sup></b>	<b>17.5sq</b>

**FLOORPLAN OPTIONS**

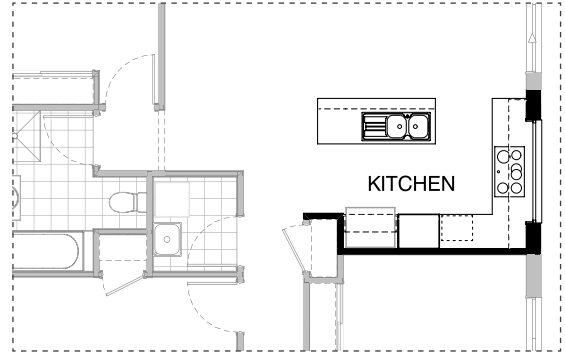
We personalise our floorplans. Talk to us about our huge range of ready-to-go design options.

Listed details based on Traditional facade floorplan (illustrated)

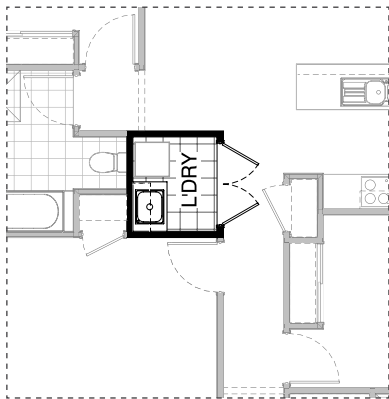
\*Copyright conditions. All photos and illustrations are representative only. Floor plans and specifications may be varied by Burbank without notice, the dimensions are diagrammatic only and a Building Contract with final drawings will display correct dimensions and detail. All designs are the property of Burbank and must not be used, reproduced, copied or varied, wholly or in part without written permission from an authorised Burbank representative. Copyright Burbank Australia (QLD) Pty Ltd. ABN 77 103 014 615. QBCC 1046544.



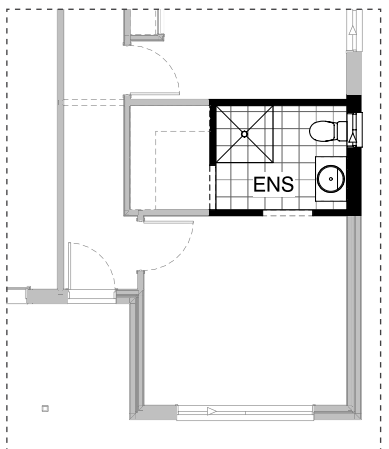
**K01**



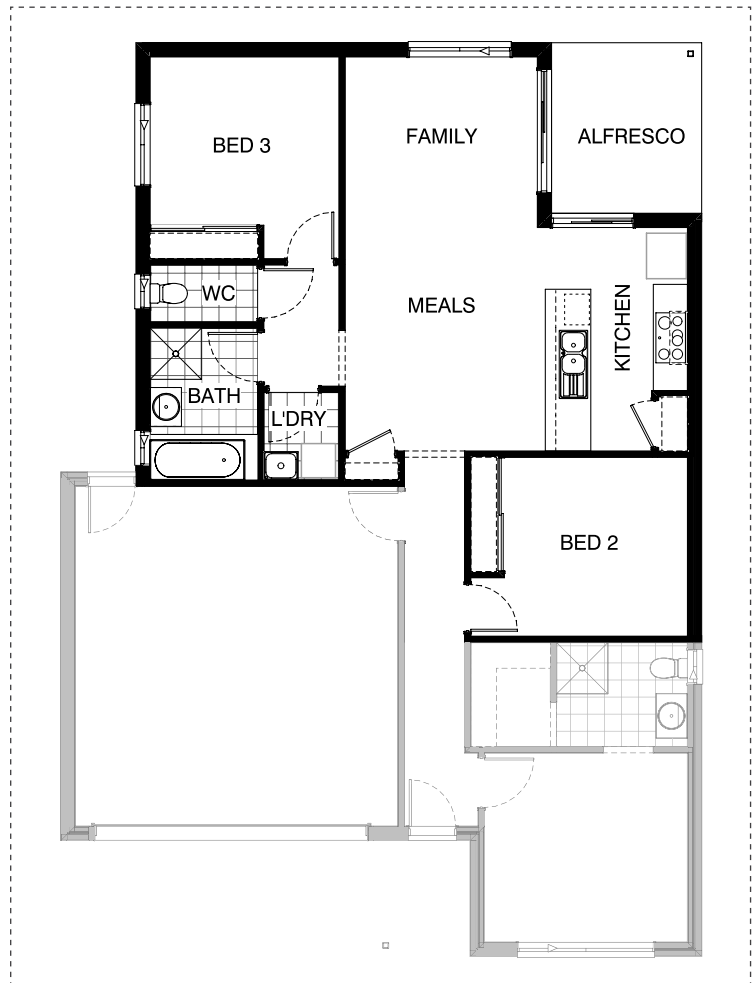
**K02**



**L01**



**EN01**



**EX01**

**OPTION DESCRIPTIONS****K01 - Kitchen Option 01**

Provide Kitchen upgrade option, including: 1No. 900mm open shelf over Ref space, 2No. 600mm overhead cupboards on either side of rangehood.

**K02 - Kitchen Option 02**

Provide L-shaped Kitchen upgrade option, including: 1No. 900mm open shelf over relocated Ref space, 900mm retractable rangehood, dishwasher provision, microwave provision with pot drawer, 1No. 450mm drawer unit, 1No. 900mm base cupboard, 1No. 900mm corner base cupboard with bi-fold doors, 1No. 800mm base cupboard, 2No. 800mm overhead cupboards, 1No. 700mm full height laminate Pantry cupboard, 514mm x 1810mm Aluminium fixed window to benchtop with no bottom reveal in lieu of standard.

**L01 - Laundry Option 01**

Provide Laundry upgrade option with additional benchtop, base and overhead cupboards, including: stainless steel trough, 1No. 800mm base cupboard, 1No. 800mm overhead cupboard, 2No. 720mm hinged doors in lieu of standard.

**EN01 - Ensuite Option 01**

Provide Ensuite upgrade option, including: 1000mm x 1000mm tiled shower base in lieu of standard.

**EX01 - External 01**

Provide alternate floor plan layout option to be used on 12.5m x 20m lots. Option decreases length of home by 920mm Option decreases total floor area by 2.45m<sup>2</sup>. New Kitchen includes: 900mm retractable rangehood, dishwasher provision, microwave provision with pot drawer, 1No. 450mm drawer unit, 1No. 900mm base cupboard, 1No. 150mm base cupboard, 2No. 450mm base cupboards, 2110mm x 2170mm Aluminium sliding door in lieu of standard and additional 2110mm x 1450mm Aluminium sliding door in lieu of standard window.