

Facades available:	
Coastal, Delta, Kingston, Nouveau	
Salisbury, Traditional, York	
Overall home width	11.39m
Overall home length	25.19m

Residence	203.3m ²	21.9sq
Garage	37.4m ²	4.0sq
Porch	3.8m ²	0.4sq
Alfresco	11.6m ²	1.3sq
Total	256.1m²	27.6sq

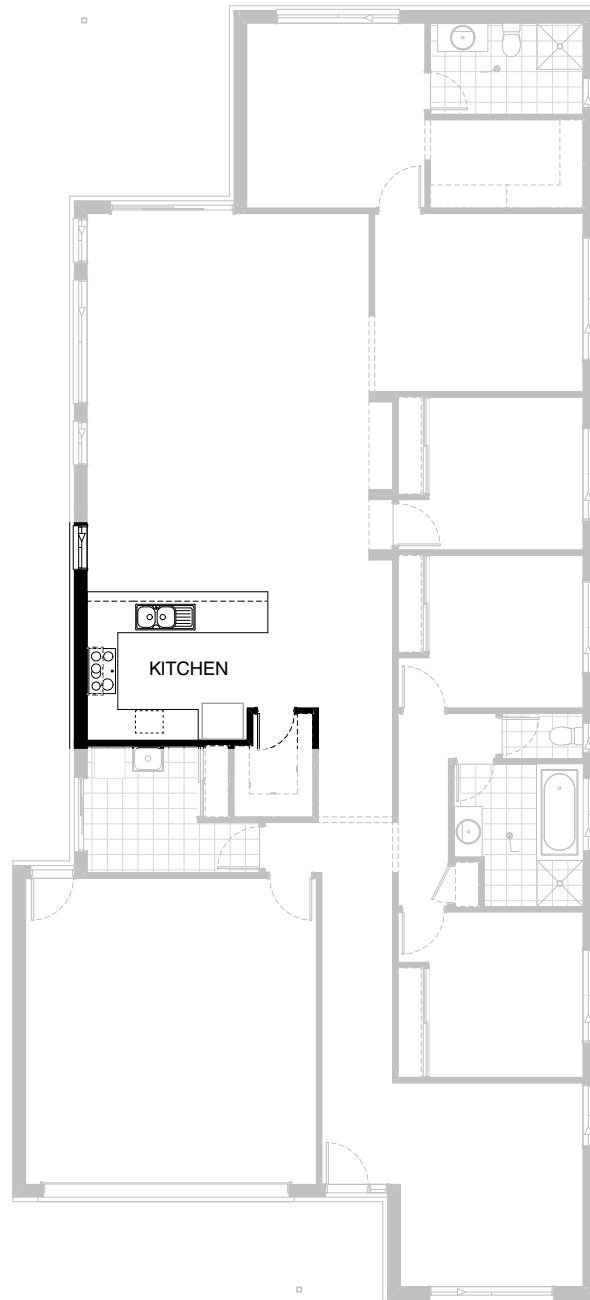
FLOORPLAN OPTIONS

We personalise our floorplans. Talk to us about our huge range of ready-to-go design options.

Listed details based on Traditional facade floorplan (illustrated)

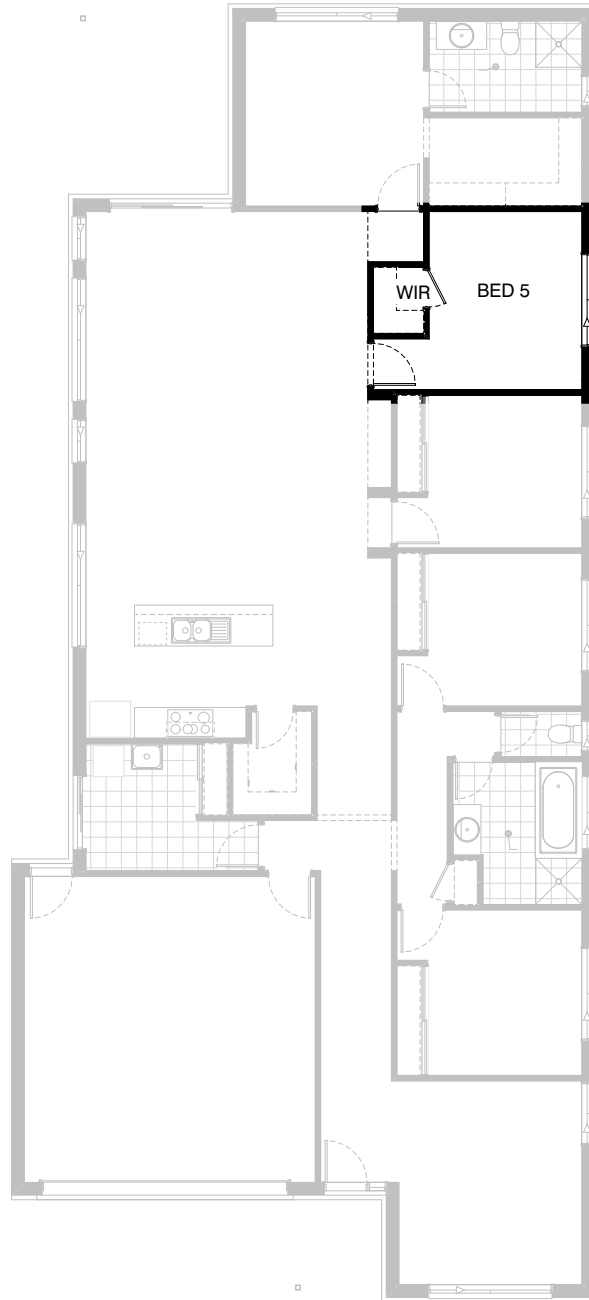
*Copyright conditions. All photos and illustrations are representative only. Floor plans and specifications may be varied by Burbank without notice, the dimensions are diagrammatic only and a Building Contract with final drawings will display correct dimensions and detail. All designs are the property of Burbank and must not be used, reproduced, copied or varied, wholly or in part without written permission from an authorised Burbank representative. Copyright Burbank Australia (QLD) Pty Ltd. ABN 77 103 014 615. QBCC 1046544.

Call 13 BURBANK
Visit burbank.com.au



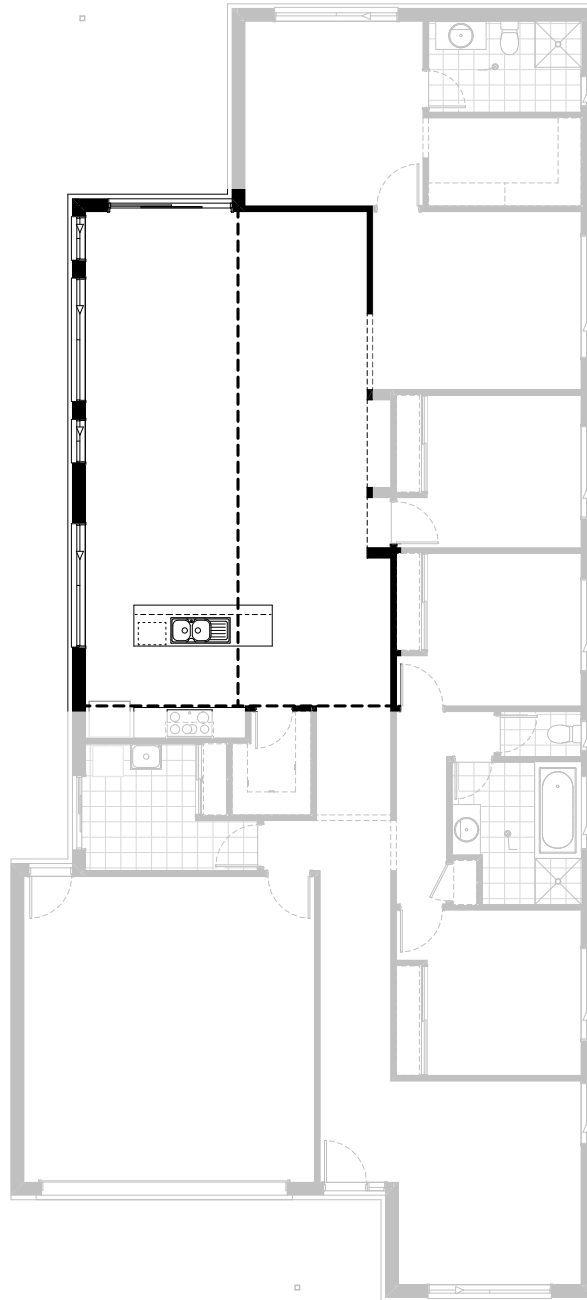
Option Kitchen01

Provide U-shaped Kitchen upgrade including relocation of ref space & microwave space, additional base cupboards, bench top and tiled splashback. (Reduces Family / Meals dimension from 4920mm to 4740mm)



Option Internal01

Provide Bed 5 in lieu of Rumpus including WIR
and provide 1218 sliding window in lieu of 2024.



Option Internal02

Provide raked ceiling with internal ridge to kitchen, meals & family.