

FLOORPLAN OPTIONS

We personalise our floorplans. Talk to us about our huge range of ready-to-go design options.

Facades available:

Barrine, Mackay	
Lonsdale, Corella	
Overall home width	8.99m
Overall home length	18.95m

Residence	180.2m ²	19.4sq
Garage	37.0m ²	4.0sq
Porch	4.8m ²	0.5sq
Alfresco	14.0m ²	1.5sq
Total	235.9m²	25.4sq

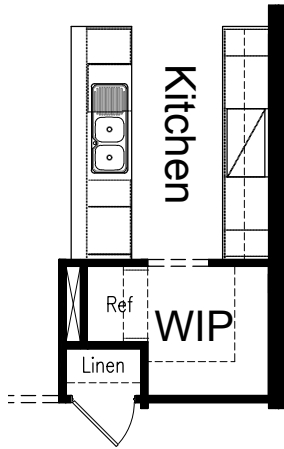
Listed details based on Barrine facade floorplan (illustrated)

*Copyright conditions. All photos and illustrations are representative only. Floor plans and specifications may be varied by Burbank without notice, the dimensions are diagrammatic only and a Building Contract with final drawings will display correct dimensions and detail. All designs are the property of Burbank and must not be used, reproduced, copied or varied, wholly or in part without written permission from an authorised Burbank representative. Copyright Burbank Australia (NSW) Pty Ltd. ABN 88 610 822 770. NSW BL 295627C ACT BL 2016566.

Call 13 BURBANK
Visit burbank.com.au

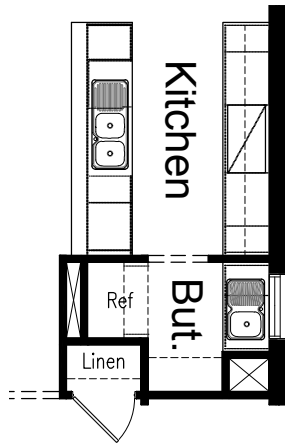
OPTION K1

Provide Galley-style Kitchen option including 900mm retractable rangehood, 900mm cooktop, 900mm under bench oven, 450mm drawer unit, dishwasher provision, microwave provision with pot drawer, 1No. 800mm base cupboard, 2No. 700mm base cupboards, 1No. 450mm base cupboard, 2No. 300mm base cupboards, 2No. 700mm overhead cupboards, 2No. 300mm overhead cupboards, open shelf over relocated refrigerator space, additional bench top and tiled splashback to suit.



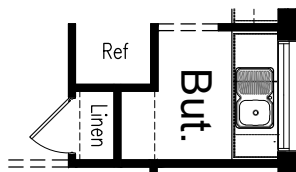
OPTION K2

Provide Galley-style Kitchen option including 900mm retractable rangehood, 900mm cooktop, 900mm under bench oven, 450mm drawer unit, dishwasher provision, microwave provision with pot drawer, 1No. 800mm base cupboard, 2No. 700mm base cupboards, 1No. 450mm base cupboard, 2No. 300mm base cupboards, 2No. 700mm overhead cupboards, 2No. 300mm overhead cupboards, open shelf over relocated refrigerator space, additional bench top and tiled splashback to suit. Butler's Pantry includes 1No. 700mm base cupboard, 1No. 400mm base cupboard, additional 1200x850mm fixed window, additional single bowl sink, additional bench top and tiled splashback to suit.



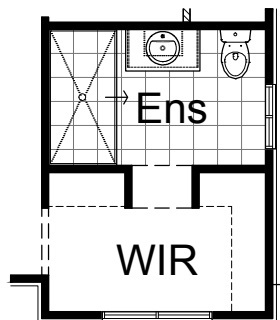
OPTION B1

Provide Butler's Pantry option in lieu of Walk-in Pantry with an unchanged Kitchen. Butler's Pantry includes 1No. 700mm base cupboard, 1No. 300mm base cupboard, microwave provision with pot drawer, additional 1200x1450mm fixed window, additional single bowl sink, additional bench top and tiled splashback to suit.



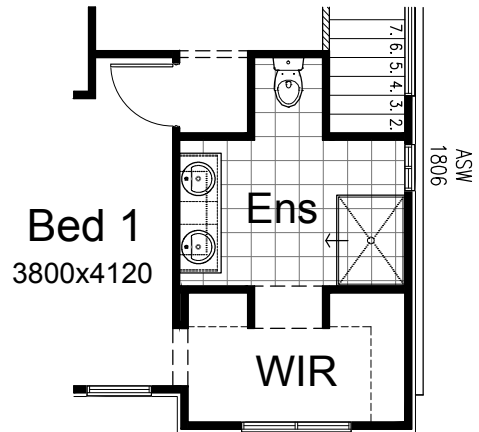
OPTION ENS1

Provide Ensuite option to Bedroom 1 including 1800x900 tiled shower base in lieu of standard. Opening to Ensuite also moved to accommodate.



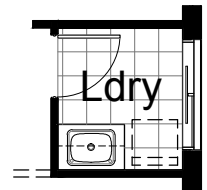
OPTION K1

Provide Ensuite option to Bedroom 1 including rearranged layout, relocated WC into alcove, 1200x900mm tiled shower base and 1582mm vanity with double basins. Provide ASW1806 sliding window in lieu of standard. Opening to Ensuite also moved to accommodate. Option takes 110mm from Bed 1 and 130mm from Walk-in Robe to accommodate.



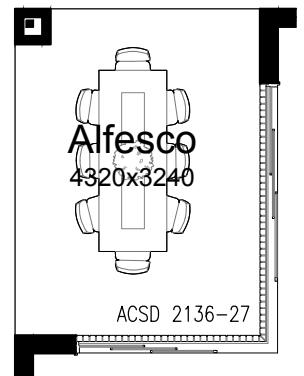
OPTION LD1

Provide Laundry upgrade including laminate base cupboards and stainless steel inset trough including 1No. 800mm base cupboard, 1No. 800mm overhead cupboard, additional benchtop and tiled splashback to suit.



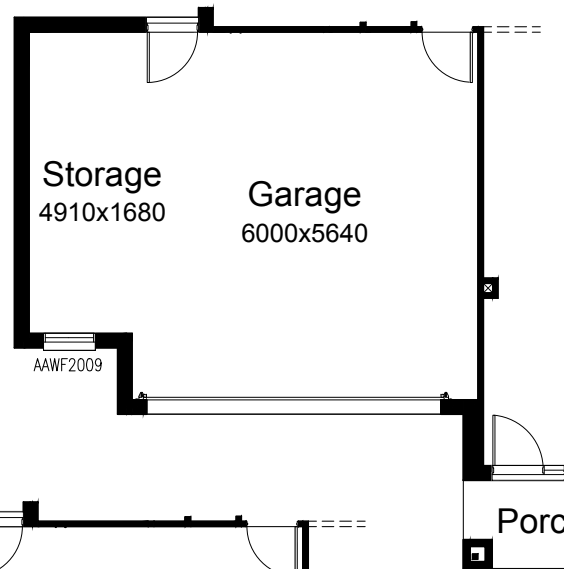
OPTION IP1

Provide ACS2136-27 corner sliding stacker door to Alfresco in lieu of ASD2127 and ASD2136. Option includes steel lintel and posts to support first floor above.



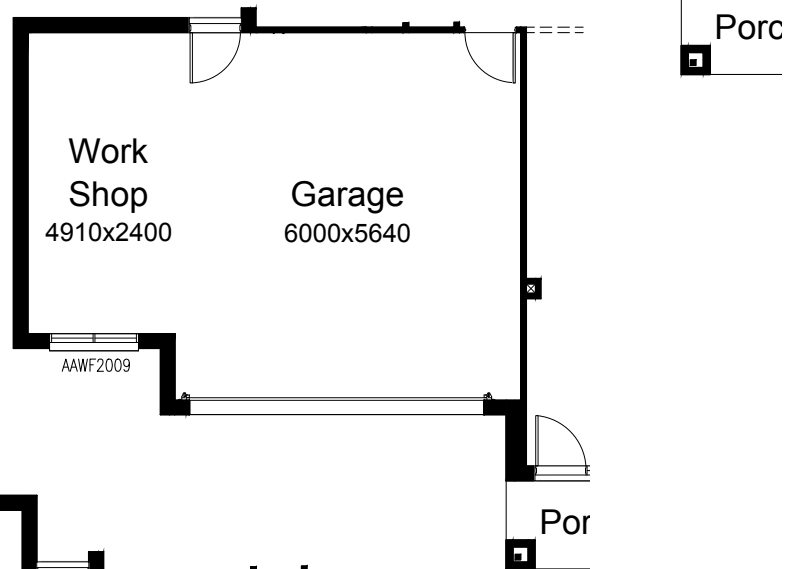
OPTION G1

Provide extension to Garage to create additional Storage area including additional AAWF2009 awning window. Increases width of the home by 1680mm. Increases area of the home by 9.06m².



OPTION G2

Provide extension to Garage to create additional Workshop area including additional AAWF2015 awning window. Increases width of the home by 2400mm. Increases area of the home by 12.94m².



OPTION G3

Provide extension to Garage to create Triple Car Garage including additional 2100x2410 garage door as per colour selection. Increases width of the home by 3600mm. Increases area of the home by 23.81m².

