

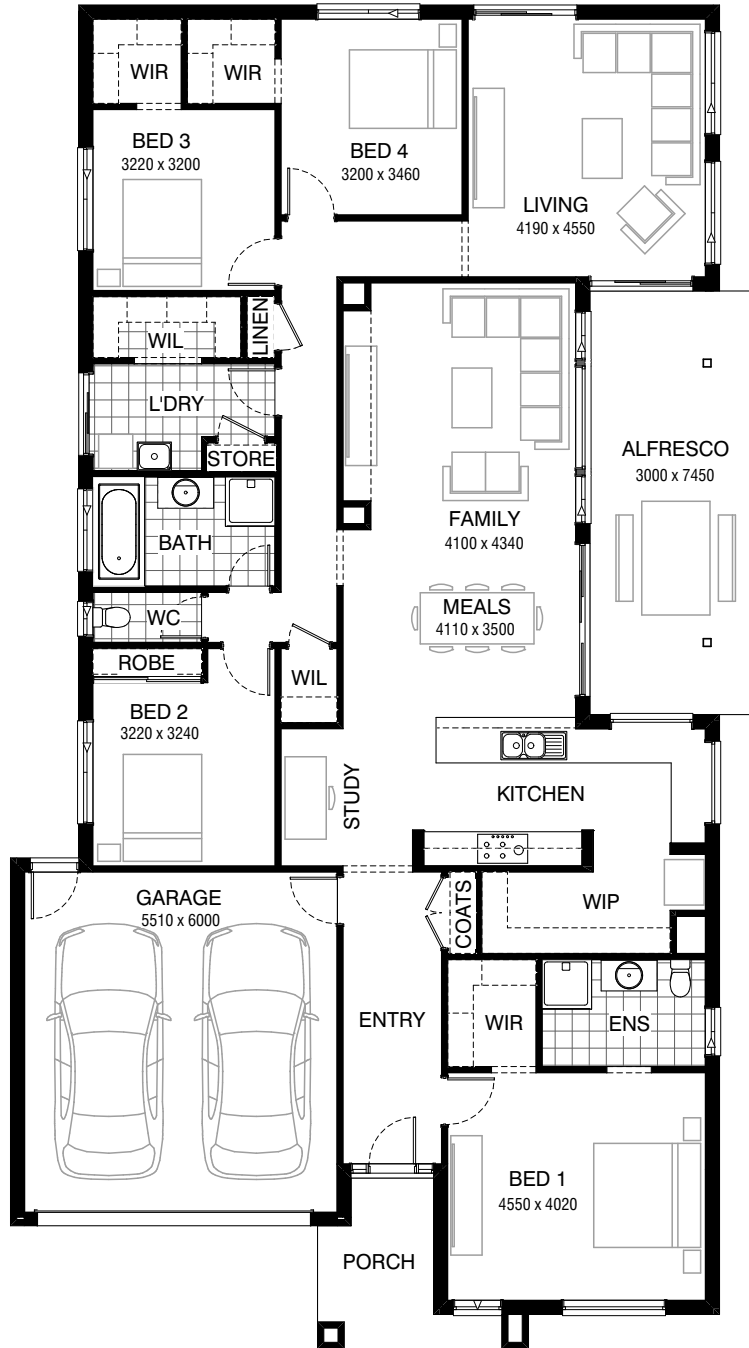


Total squares **28.9sq**

 **4**  **2**  **2**



FLOORPLAN OPTIONS

All available ready-to-go floorplan options for this design can be viewed on the following pages, or visit www.burbank.com.au.

Facades available:

- Drysdale, Arkley, Dowd, Haring
- Nolan, Alpine, Woodland, Felix

Overall home width 13.19m

Overall home length 23.63m



Residence	203.3m ²	21.9sq
Garage	36.3m ²	3.9sq
Porch	6.3m ²	0.7sq
Alfresco	22.4m ²	2.4sq
Total	268.3m²	28.9sq

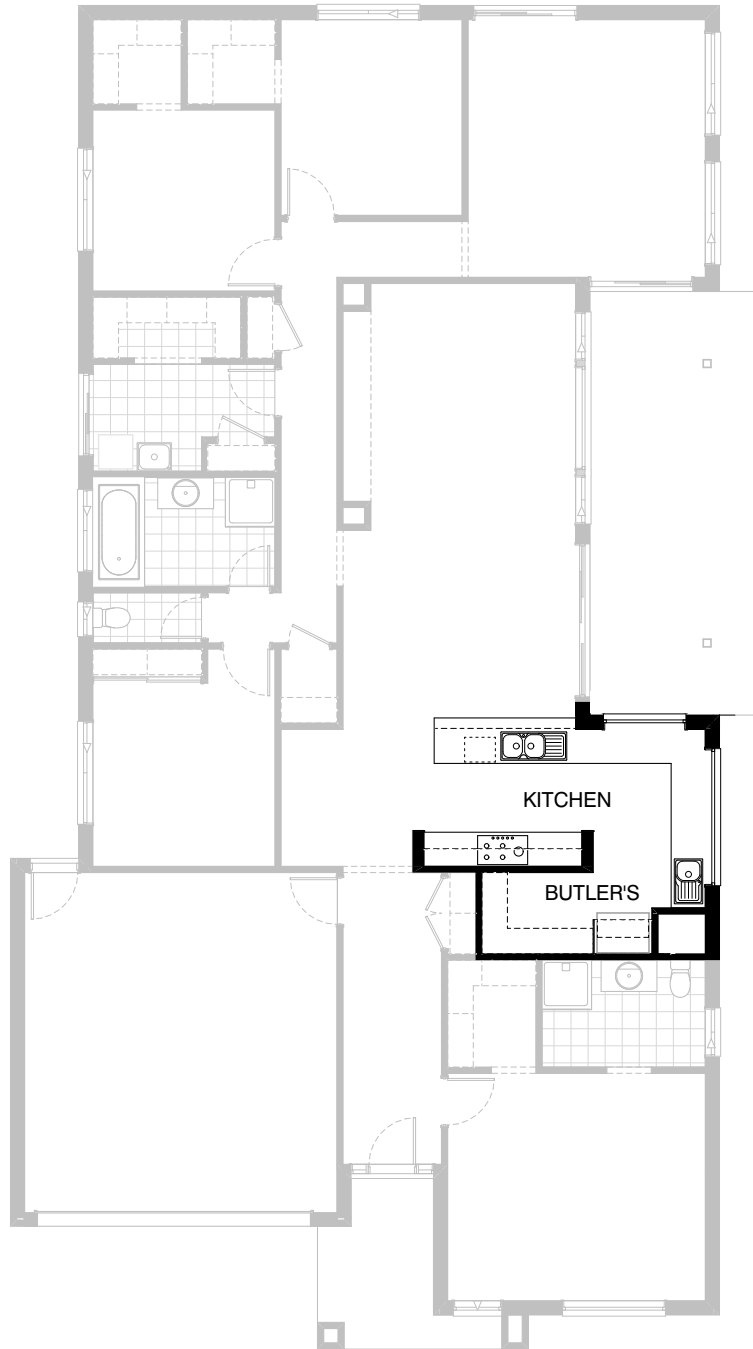
Listed details based on Drysdale façade floorplan (illustrated)

*Copyright conditions. All photos and illustrations are representative only. Floor plans and specifications may be varied by Burbank without notice, the dimensions are diagrammatic only and a Building Contract with final drawings will display correct dimensions and detail. All designs are the property of Burbank and must not be used, reproduced, copied or varied, wholly or in part without written permission from an authorised Burbank representative. Copyright Burbank Australia Pty Ltd. ABN 91 007 099 872. Builders Registration Number CDB-U-52603.

Call 13 BURBANK
Visit burbank.com.au

FLOORPLAN OPTIONS

 **4**  **2**  **2**

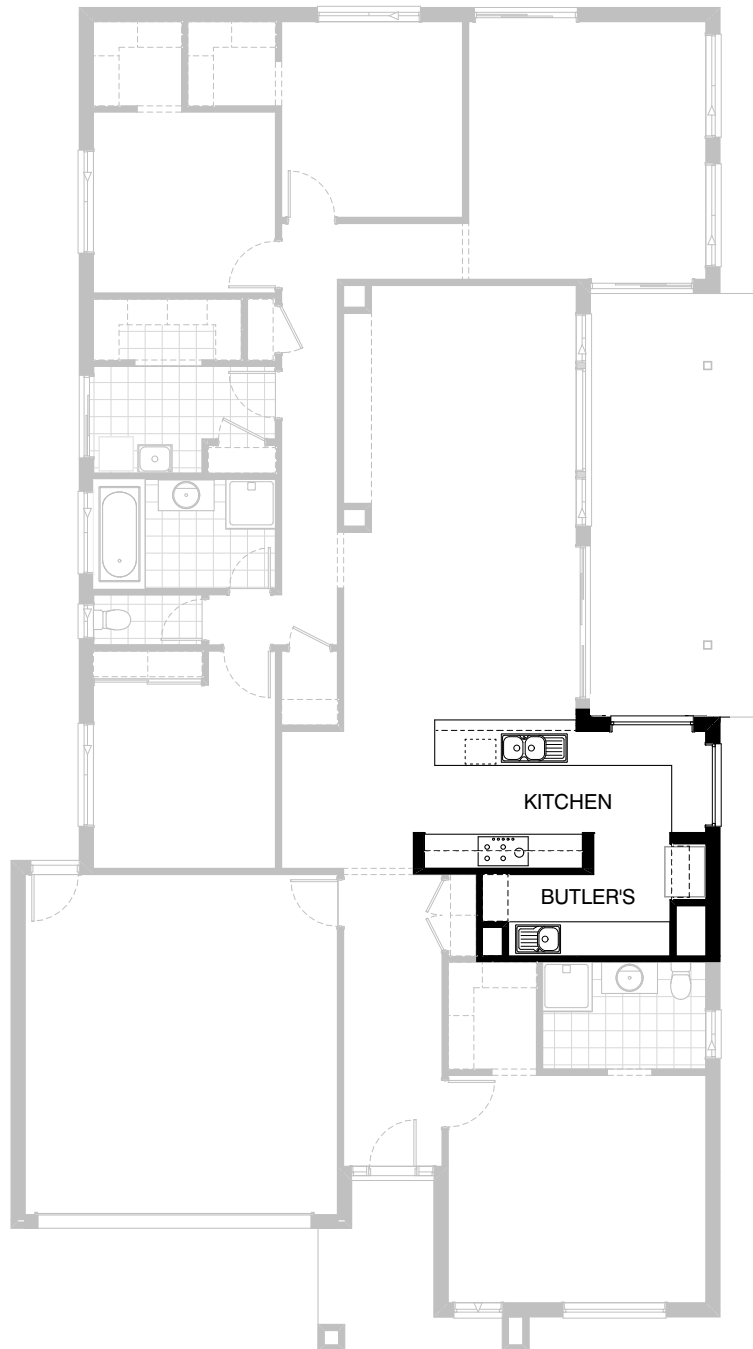
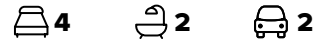


Option K-1

Provide Kitchen upgrade with Butler's Pantry. Option includes relocating Ref space, 900mm retractable rangehood, 900mm cooktop and under bench oven, 450mm drawer unit, 1No. dishwasher provision, 1No. microwave provision with pot drawer, 5No. 900mm base cabinets, 2No. 800mm base cabinets, 1No. 600mm blind carcass base cabinet, 1No. 600mm base cabinet, 2No. 900mm overhead cabinets, 1No. 900mm open shelf above Ref space, additional single bowl sink, additional tiled splashback and bench top to suit. AFW1224 fixed window in lieu of standard as shown.

Note: not available in conjunction with option ENS-2 and ENS-3

FLOORPLAN OPTIONS



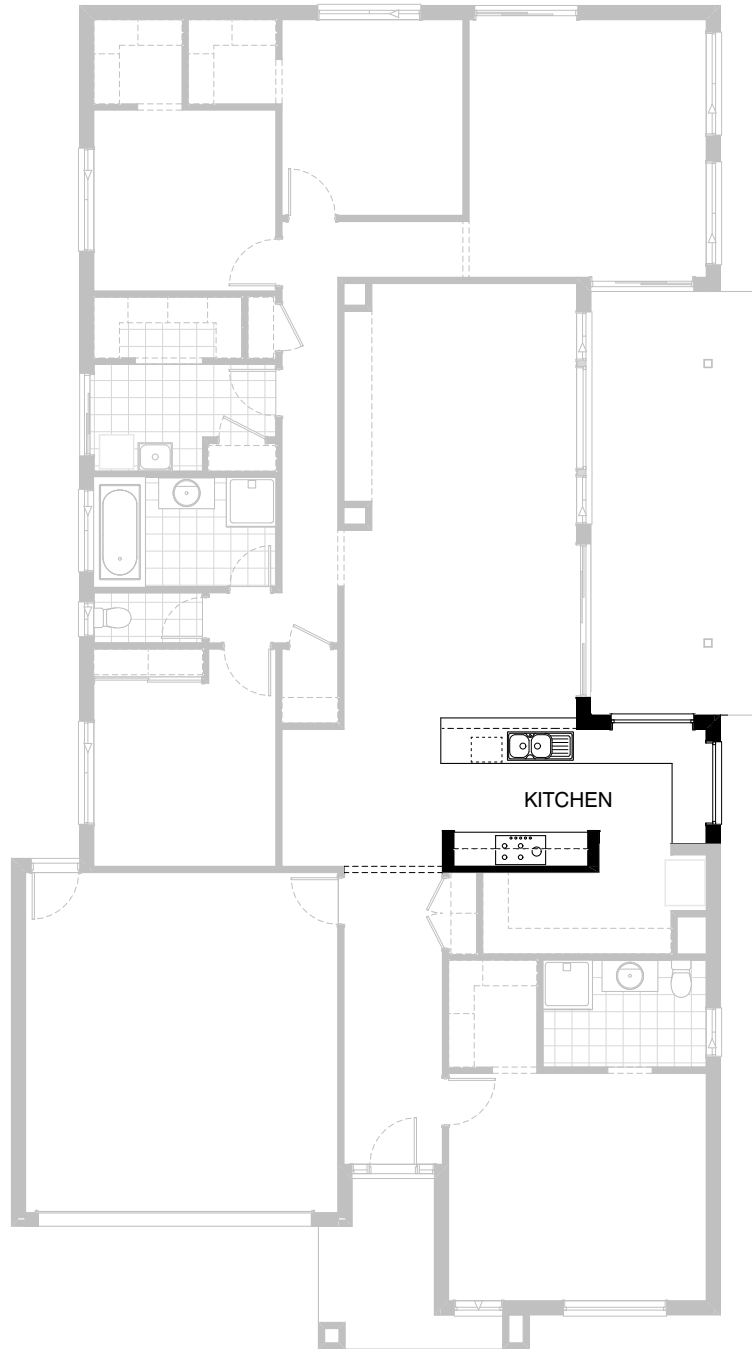
Option K-2

Provide Kitchen upgrade with Butler's Pantry. Option includes 900mm retractable rangehood, 900mm cooktop and under bench oven, 450mm drawer unit, 1No. dishwasher provision, 1No. microwave provision with pot drawer, 7No. 900mm base cabinets, 1No. 800mm base cabinet, 1No. 600mm blind carcass base cabinet, 1No. 600mm base cabinet, 1No. 350mm base cabinet, 2No. 900mm overhead cabinets, 1No. 900mm open shelf above Ref space, additional single bowl sink, additional tiled splashback and bench top to suit. AFW1215 fixed window in lieu of standard as shown.

Note: not available in conjunction with option ENS-2 and ENS-3

FLOORPLAN OPTIONS




 **4**  **2**  **2**

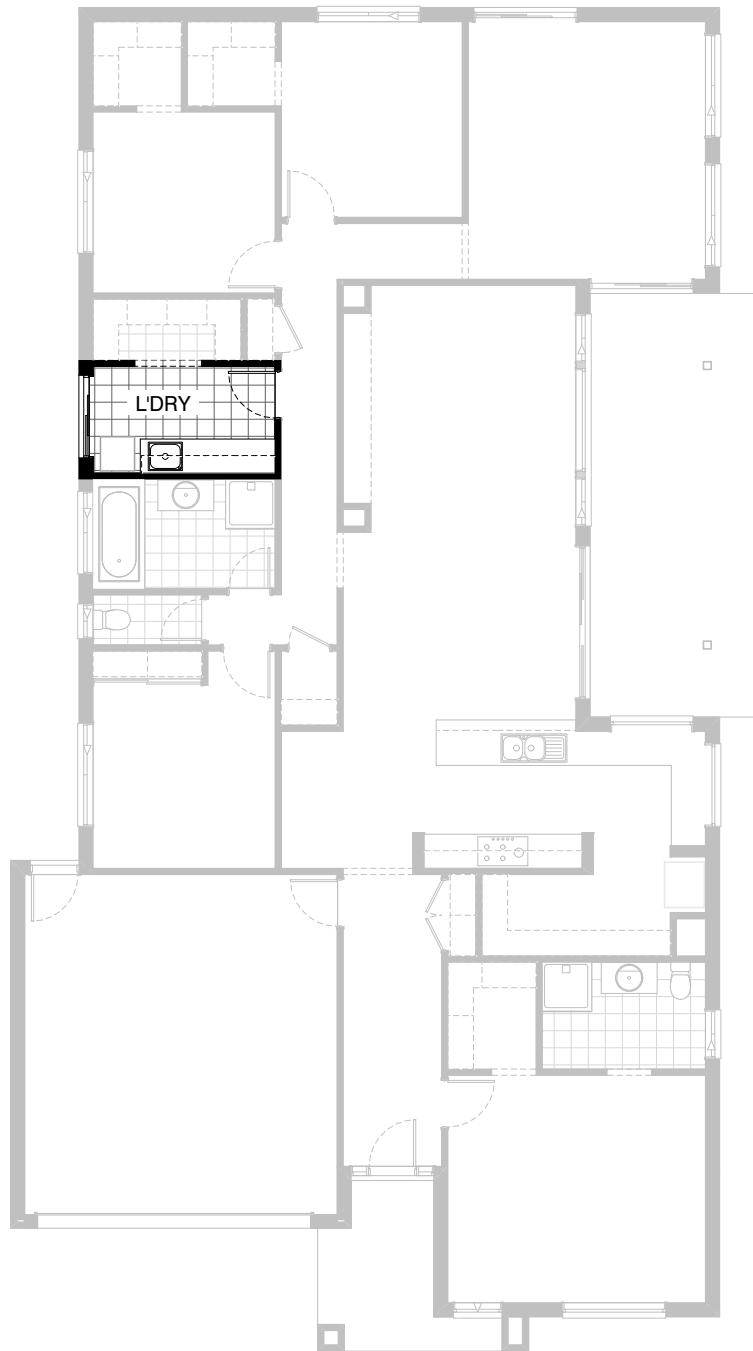


Option K-3

Provide alternative Kitchen proportions. Option includes 900mm retractable rangehood, 900mm cooktop and under bench oven, 450mm drawer unit, 1No. dishwasher provision, 1No. microwave provision with pot drawer, 1No. 900mm base cabinet, 2No. 800mm base cabinets, 2No. 700mm base cabinets, 1No. 600mm blind carcass base cabinet, 1No. 600mm base cabinet, 1No. 450mm base cabinet, 2No. 700mm overhead cabinets, reduced tiled splashback and bench top to suit.

FLOORPLAN OPTIONS

 **4**  **2**  **2**






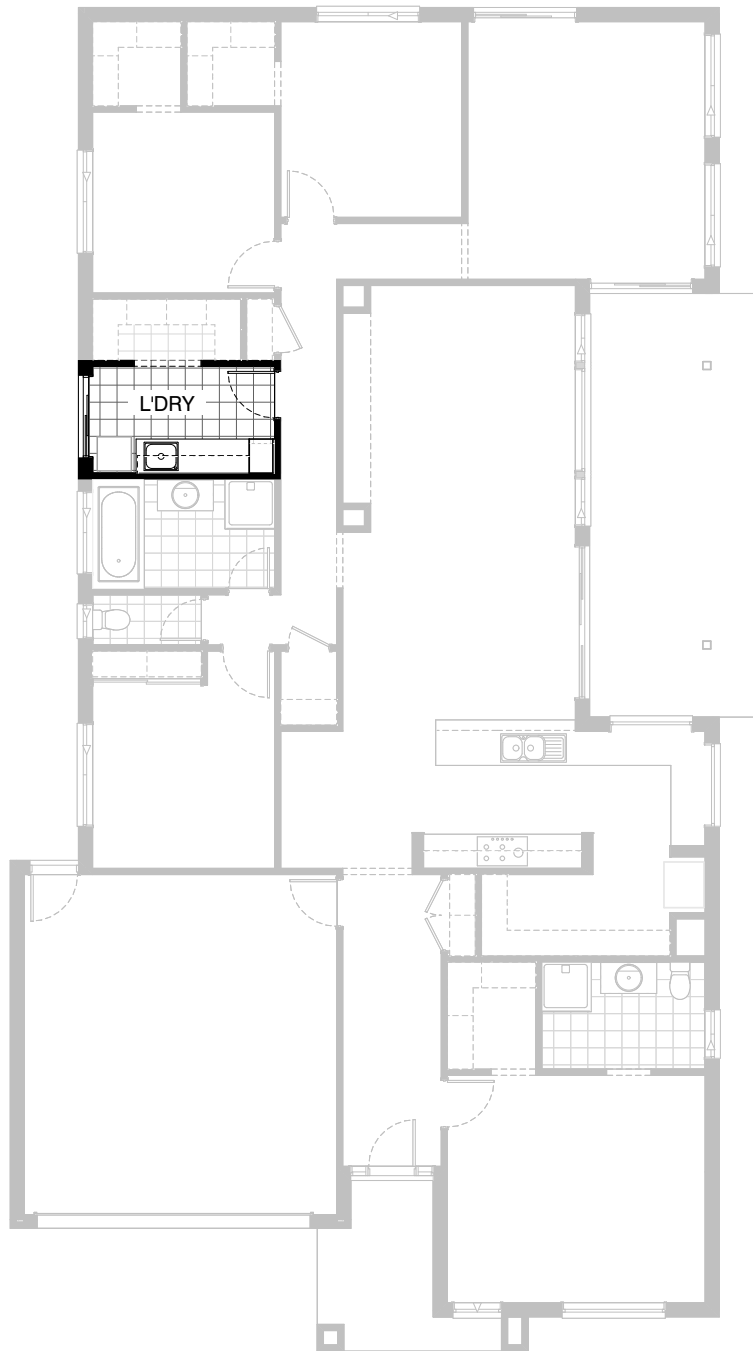
Option LD-1

Provide upgrade Laundry option including laminate base cabinets and stainless steel inset trough, 2No. 800mm base cabinets, 1No. 700mm base cabinet, 2No. 800mm overhead cabinets, 1No. 700mm overhead cabinet, additional tiled splashback and bench top to suit.
Delete store in Laundry.

Note: not available in conjunction with option B-1

FLOORPLAN OPTIONS

 **4**  **2**  **2**






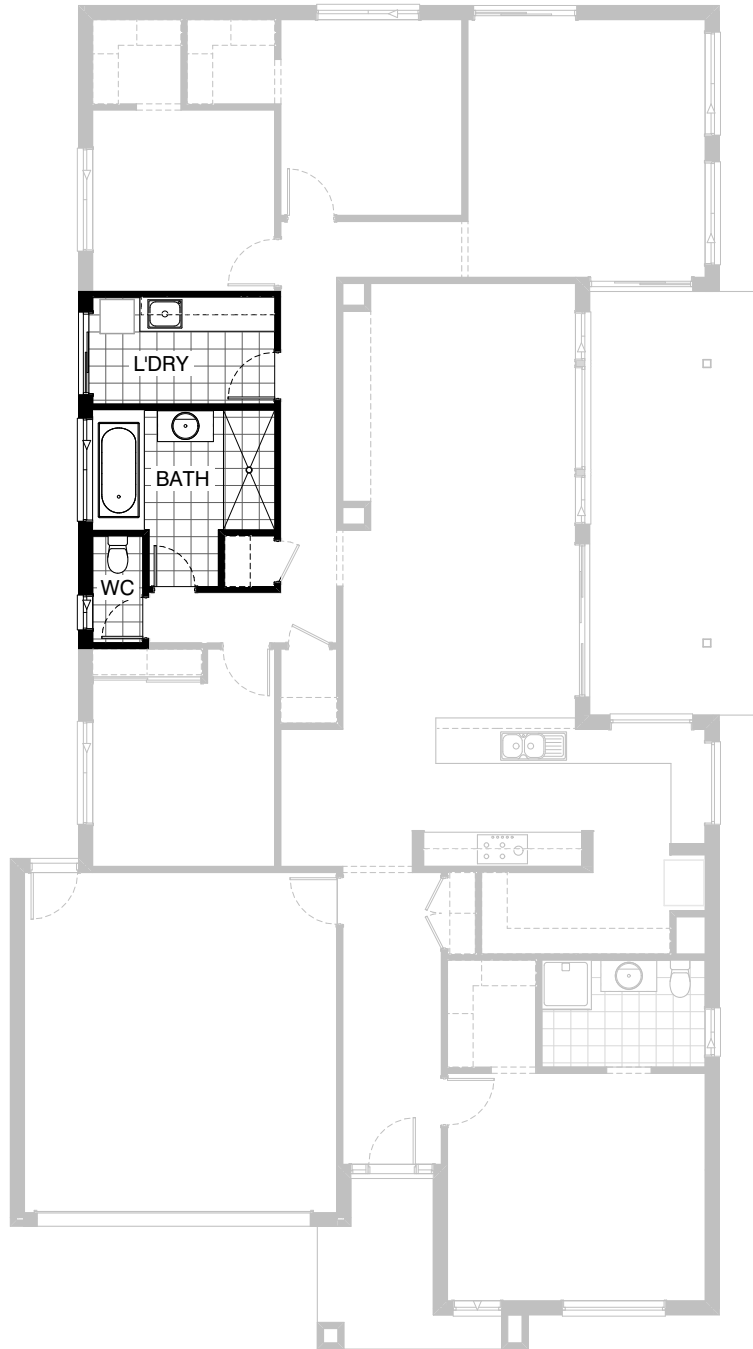
Option LD-2

Provide upgrade Laundry option including laminate base cabinets and stainless steel inset trough, 2No. 800mm base cabinets, 1No. 350mm base cabinet, 2No. 800mm overhead cabinets, 1No. 350mm overhead cabinet, 1No. 400mm full height broom cabinet, additional tiled splashback and bench top to suit. Delete Store in Laundry.

Note: not available in conjunction with option B-1

FLOORPLAN OPTIONS

 **4**  **2**  **2**



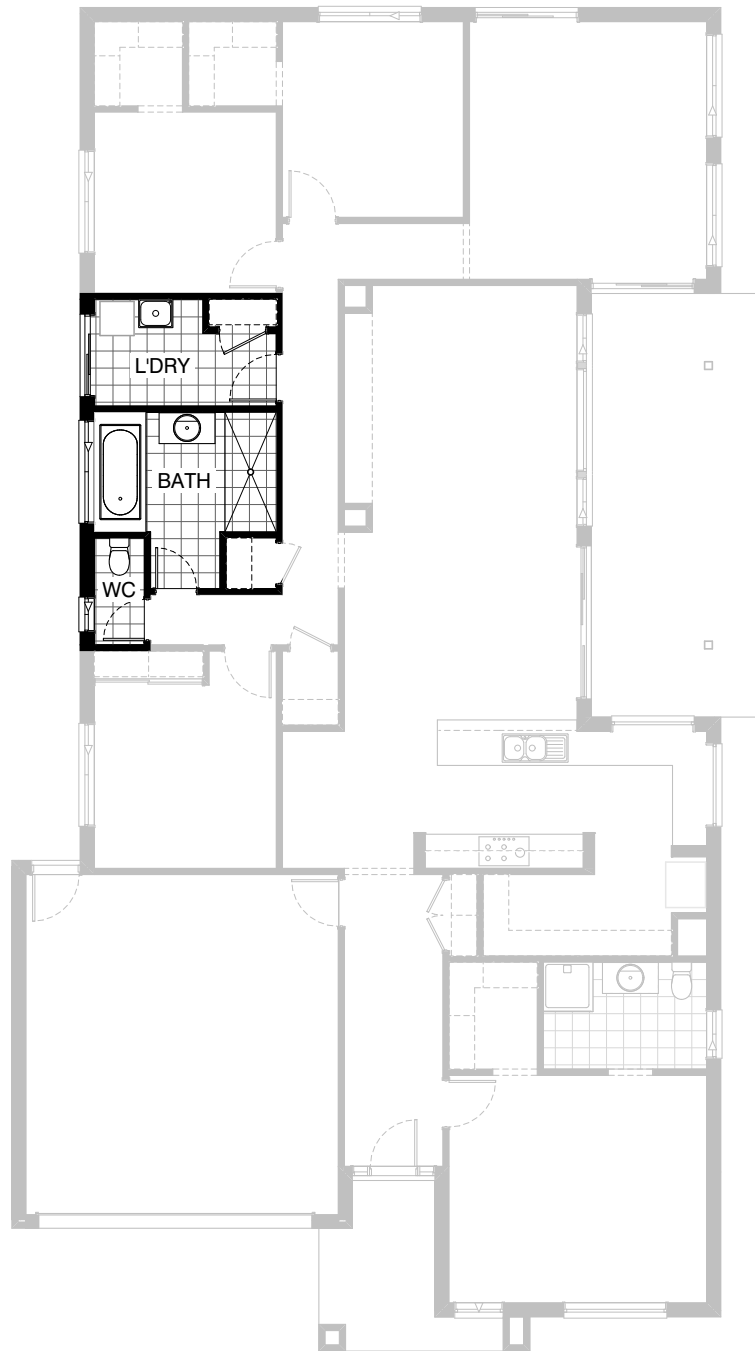
Option LD-3

Provide upgrade Laundry option including laminate base cabinets and stainless steel inset trough, 2No. 800mm base cabinets, 1No. 700mm base cabinet, 2No. 800mm overhead cabinets, 1No. 700mm overhead cabinet, additional tiled splashback and bench top to suit. Delete Store in Laundry & option also changes the layout of WC and removes Walk-in Linen to Laundry and standard Linen to Passage and adds small Walk-in Linen to Passage near Bathroom.

Note: Only available with option B-1

FLOORPLAN OPTIONS

 **4**  **2**  **2**






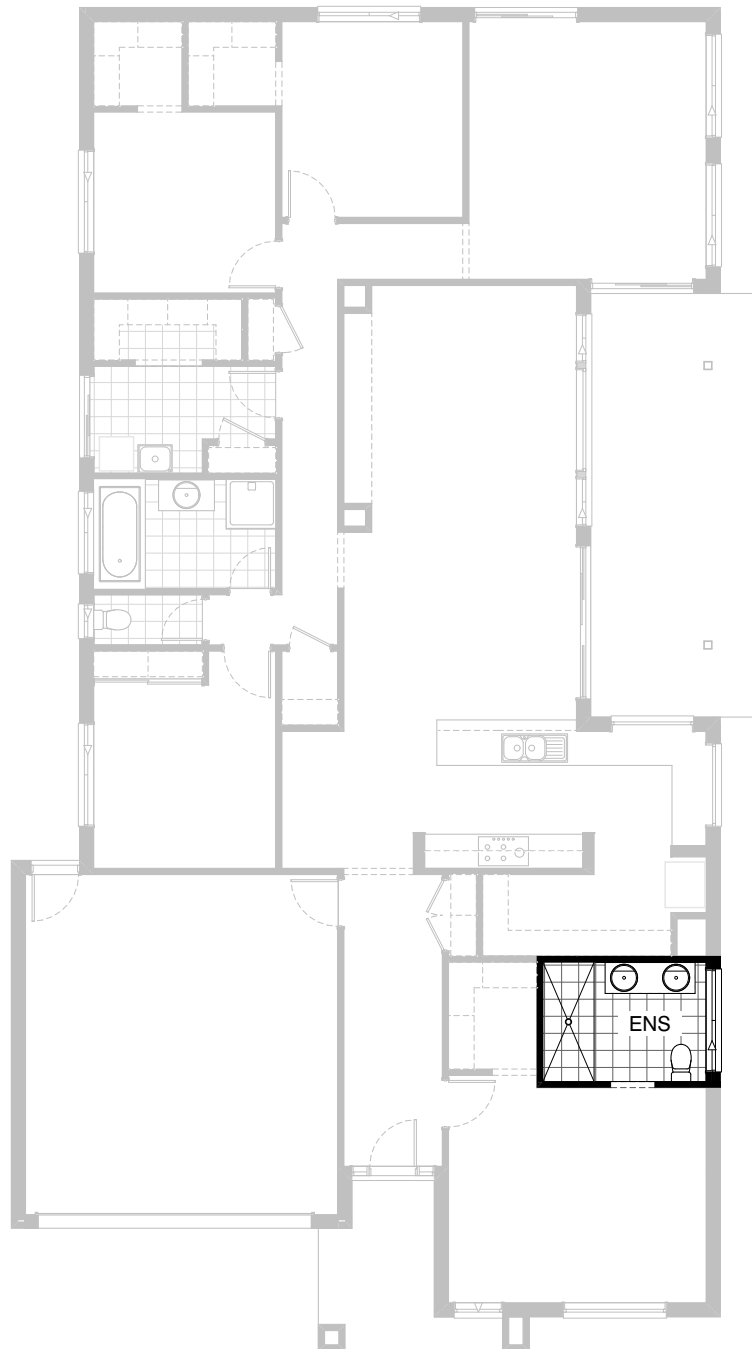
Option B-1

Provide upgrade Bathroom option including 2100x900mm tiled shower base, 982mm vanity with single bowl, 1675mm bath with tiled hob. Option also changes the layout of WC and removes Walk-in Linen to Laundry and standard Linen to Passage and adds small Walk-in Linen to Passage near Bathroom. Provide ASW1218 window to Bathroom in lieu of standard as shown.

Note: not available in conjunction with option IP1-1

FLOORPLAN OPTIONS

 **4**  **2**  **2**

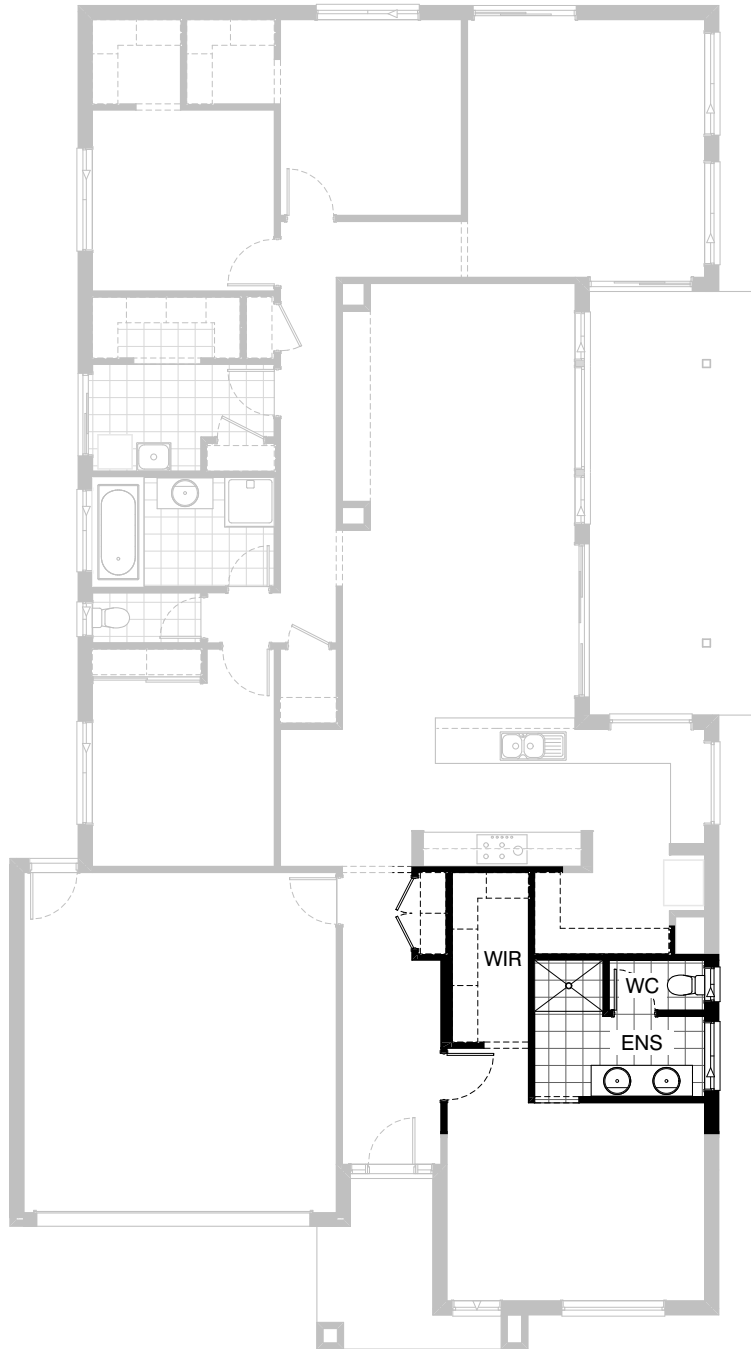


Option ENS-1

Provide upgrade Ensuite option with rearranged layout including 2100x900mm tiled shower base, 1582mm vanity with double bowl. Provide ASW1018 window in lieu of standard as shown. Option takes 220mm of length from Bed 1.

FLOORPLAN OPTIONS

 **4**  **2**  **2**



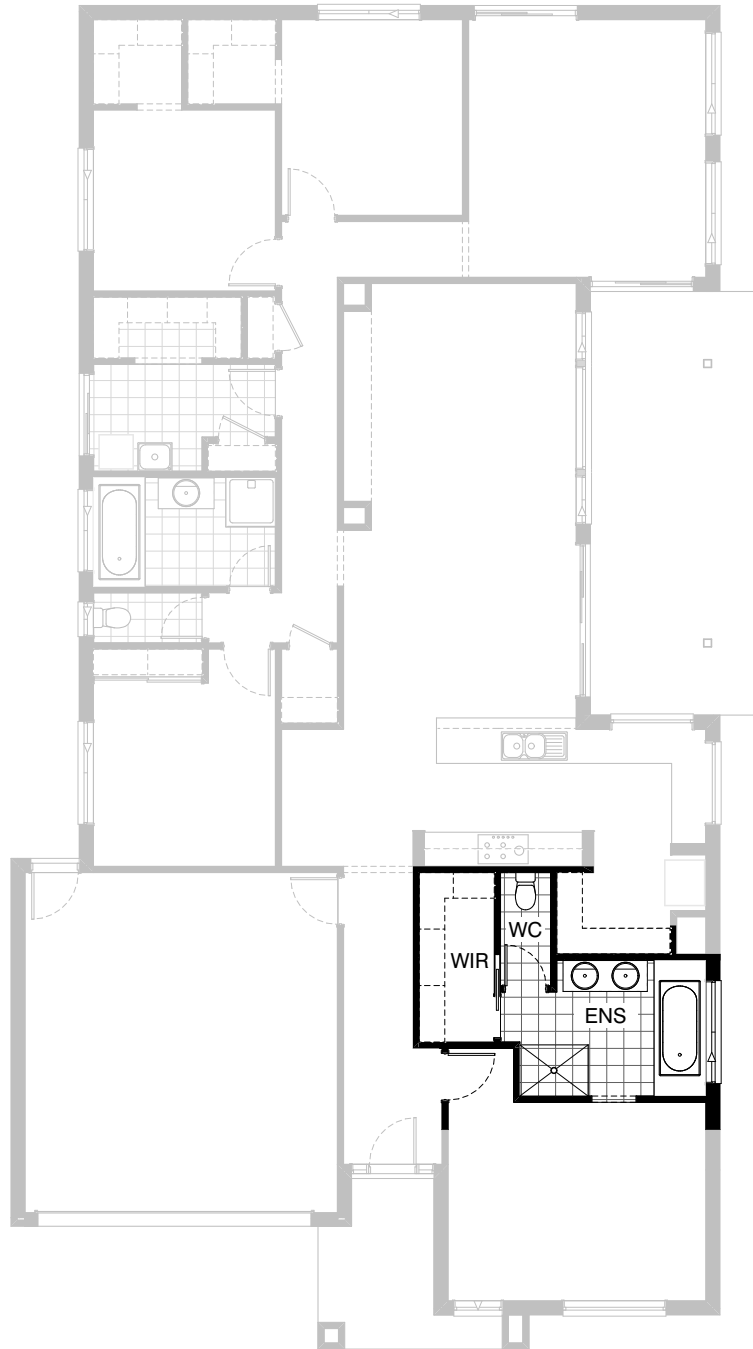
Option ENS-2

Provide upgrade Ensuite option with rearranged layout including 1200x900mm tiled shower base, 1782mm vanity with double bowl, enclosed WC and enlarged Walk-in Robe. Provide ASW1006 window to enclosed WC and ASW1212 window in lieu of standard as shown. Option takes 520mm from length of Bed 1 and 940mm of width from Walk-in Pantry.

Note: not available in conjunction with option K-1 and K-2

FLOORPLAN OPTIONS

 **4**  **2**  **2**





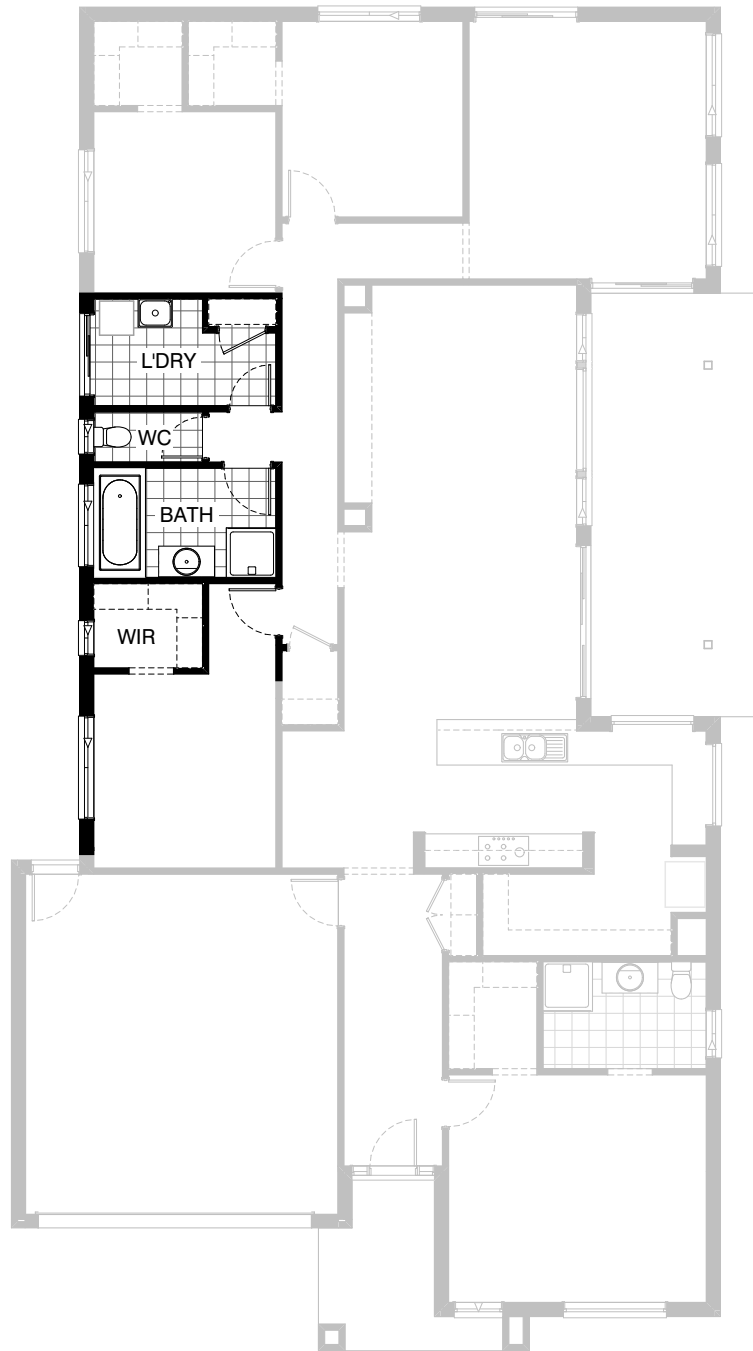
Option ENS-3

Provide upgrade Ensuite option with rearranged layout including 1200x900mm tiled shower base, 1482mm vanity with double bowl, 1675mm bath with tiled hob, enclosed WC and enlarged Walk-in Robe. Provide ASW1218 window in lieu of standard as shown. Option takes 520mm from length of Bed 1 and 1310mm of width from Walk-in Pantry, and also removed Coats cupboard from Entry passage.

Note: not available in conjunction with option K-1 and K-2

FLOORPLAN OPTIONS

 **4**  **2**  **2**




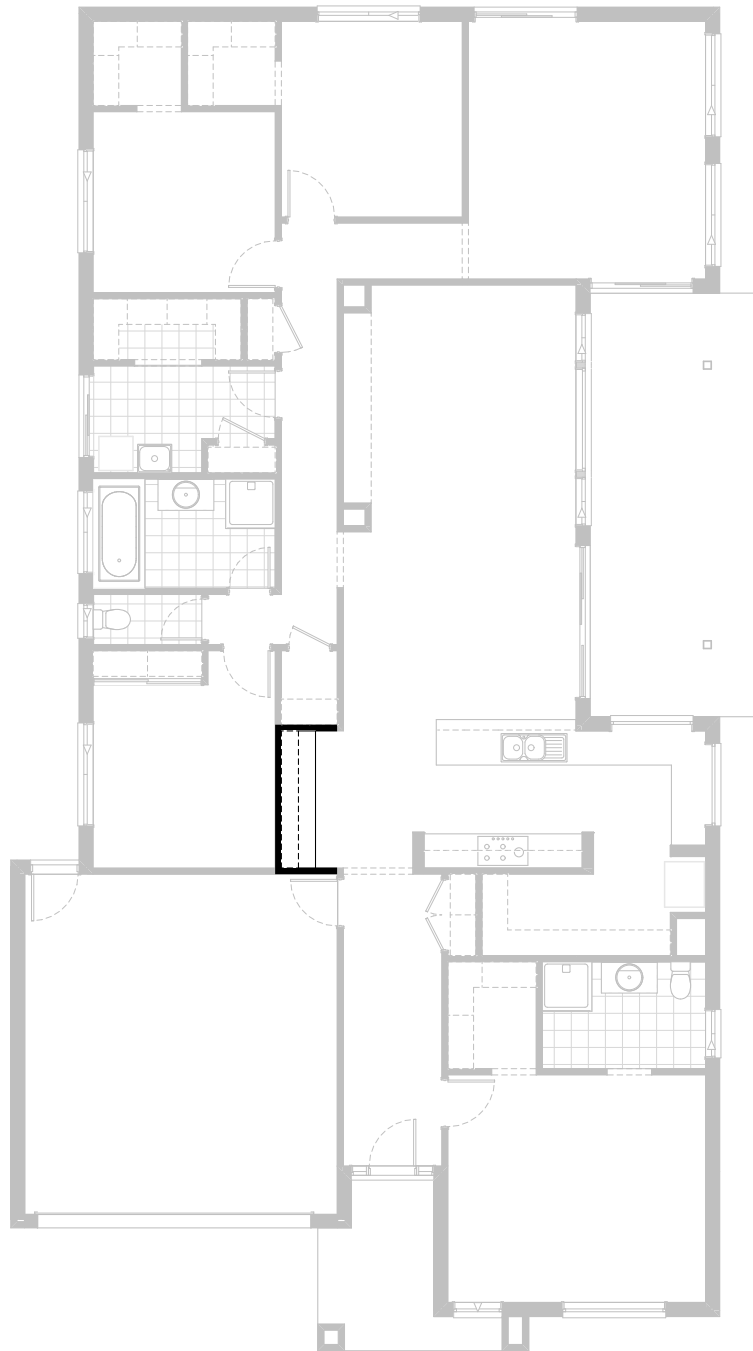
Option IP1-1

Provide floor plan option including Walk-in Robe to Bed 2. Option removes Walk-in Linen to Laundry and standard Linen to Passage and moves WC in between Bathroom and Laundry. Provide ASW1806 window to Bed 2 WIR as shown. Option adds 190mm of length to Bed 2.

Note: not available in conjunction with option B-1

FLOORPLAN OPTIONS




 **4**  **2**  **2**

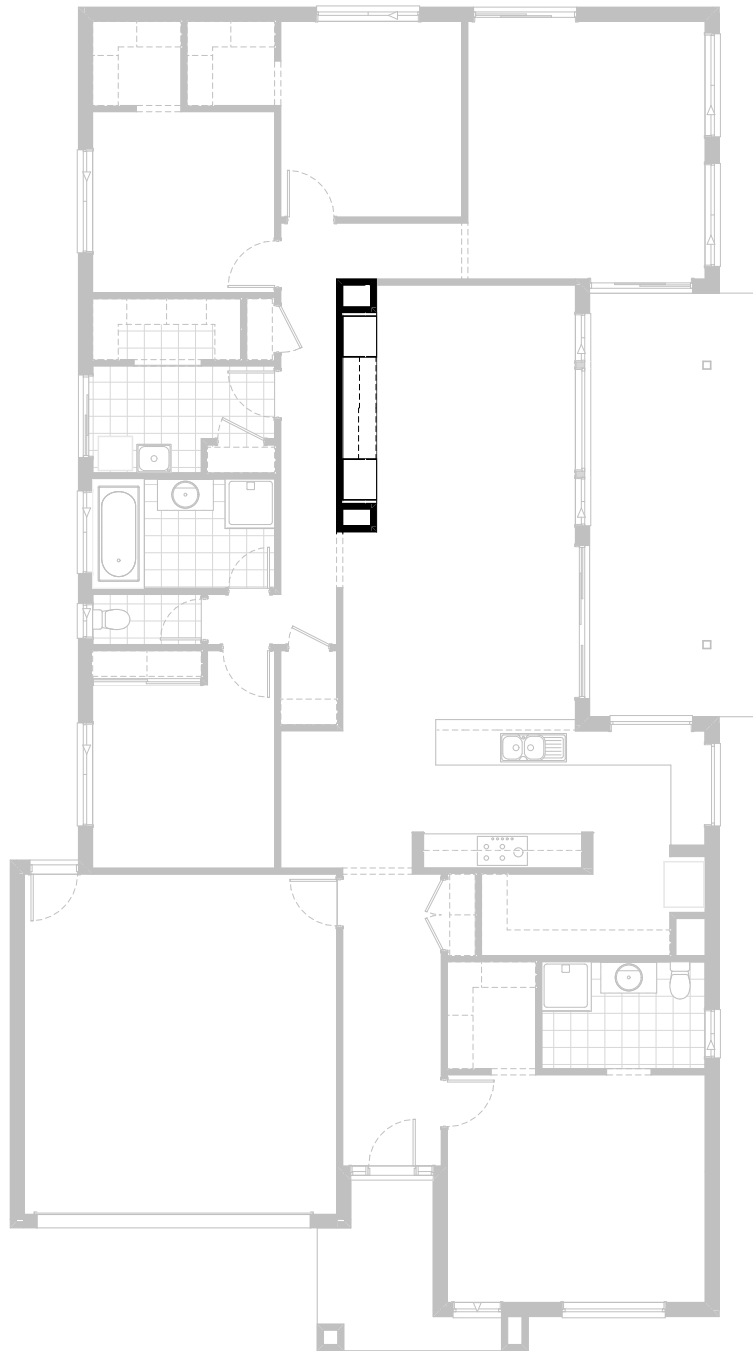


Option IP1-2

Provide floor plan option with built-in desk and cabinetry to Study Nook including 600mm deep 32mm laminate bench top, 2No. 600mm wide single drawer units, 2No. full-width 300mm deep open shelves above.

FLOORPLAN OPTIONS


 **4**  **2**  **2**

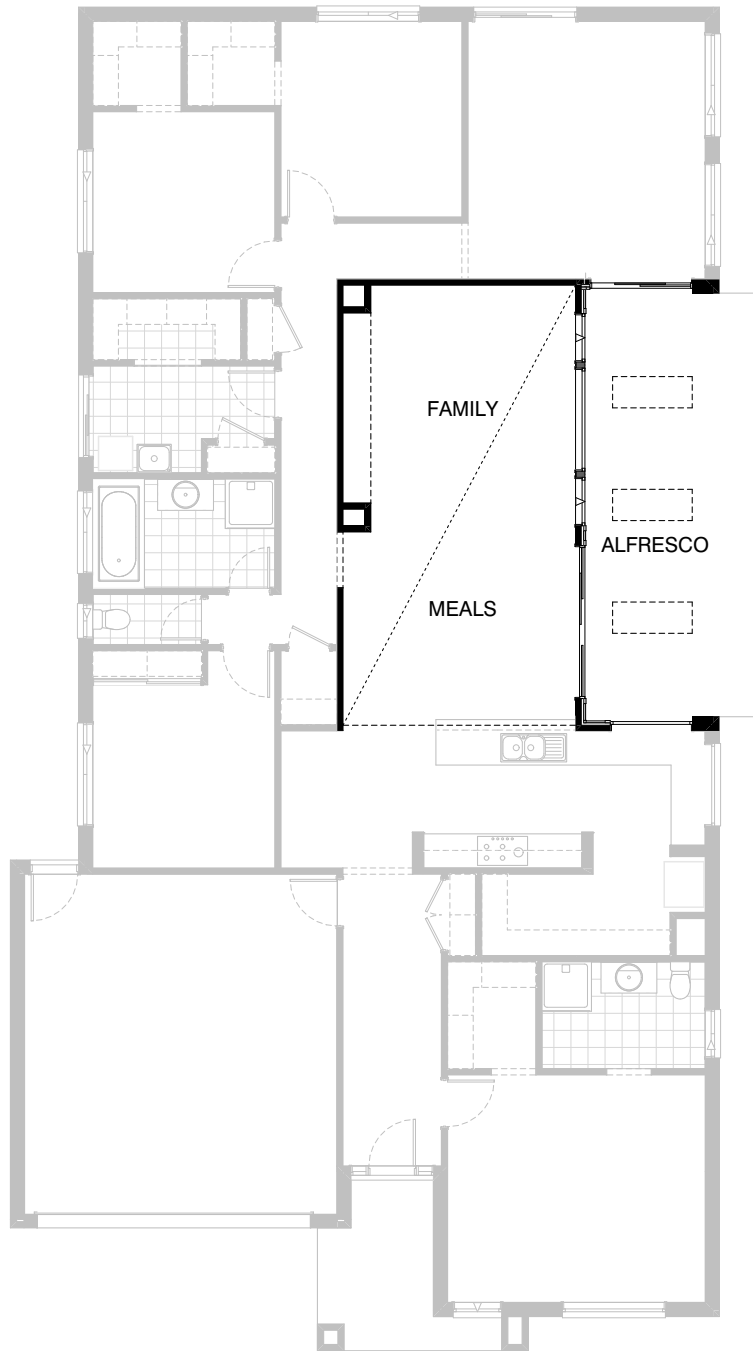


Option IP1-3

Provide floor plan option with built-in Entertainment Unit to Family Room Alcove including 600mm deep 32mm laminate bench top with 3No. 600mm drawers beneath, 2No. 700mm wide full-height cabinets, 2No. 900mm wide overhead cabinets with lift-up doors.

FLOORPLAN OPTIONS

 **4**  **2**  **2**

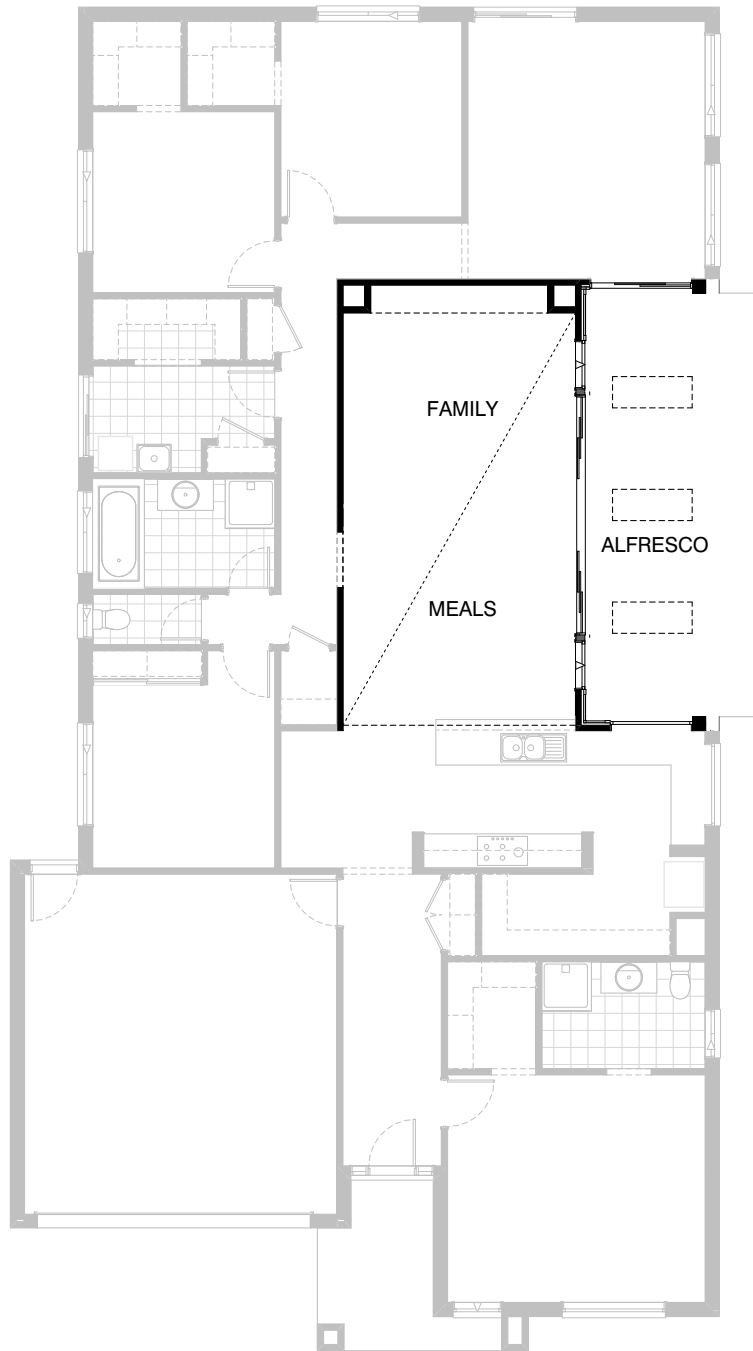


Option IP1-4

Provide floor plan option with raised ceiling to Meals/Family room and raked ceiling to Alfresco with 2No. AFW0509 fixed highlight windows, 1No. AFW0518 fixed highlight window and 1No. AFW0528 fixed highlight window. Option also removes 2No. timber posts to Alfresco with full-span steel beam and 3No. fixed skylights to roof over.

FLOORPLAN OPTIONS




 **4**  **2**  **2**

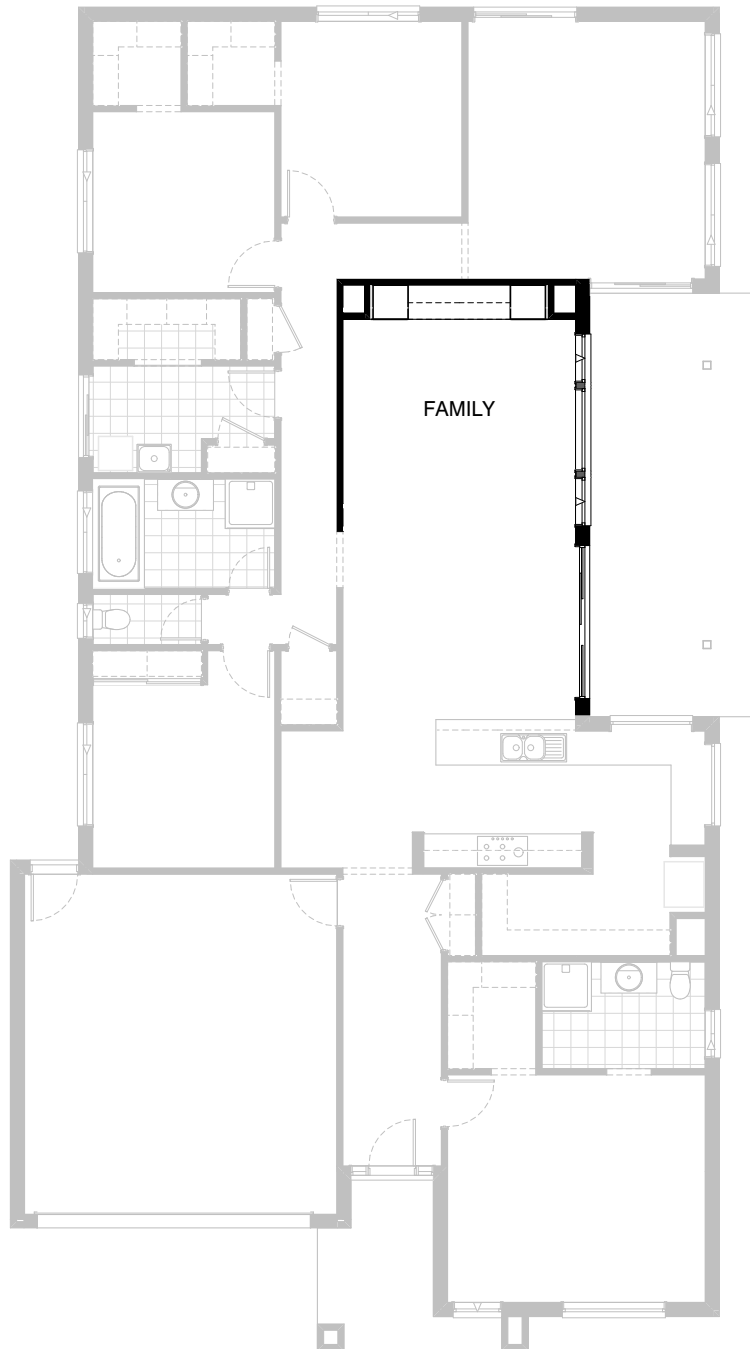


Option IP1-5

Provide floor plan option with rearranged Alcove to Family room and raised ceiling to Meals/Family room and raked ceiling to Alfresco with 2No. AAWF2009 awning windows, 1No. ASDS2142 stacker sliding door and 3No. AFW0519 fixed highlight windows. Option also removes 2No. timber posts to Alfresco with full-span steel beam and 3No. fixed skylights to roof over.

FLOORPLAN OPTIONS

 **4**  **2**  **2**






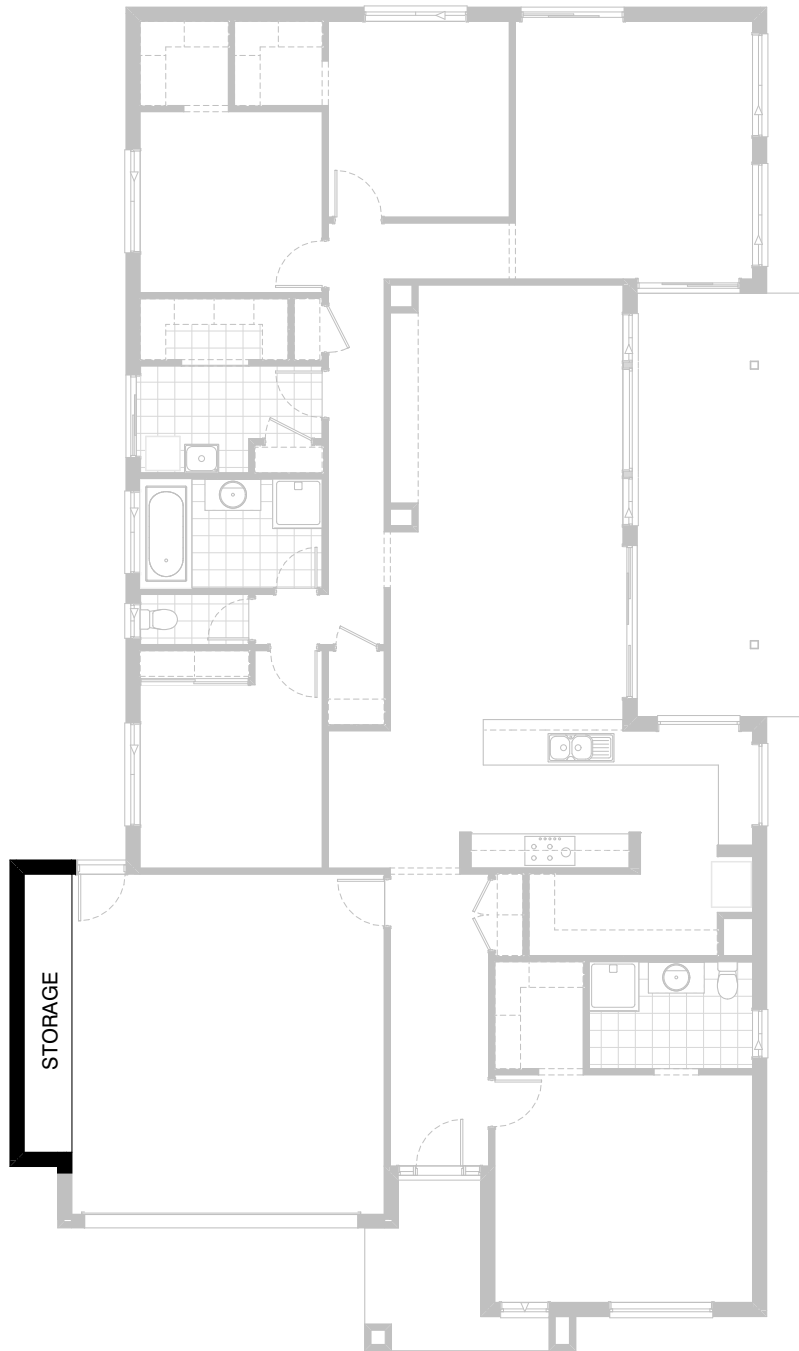
Option IP1-6

Provide floor plan option with built-in Entertainment Unit to rearranged Family Room Alcove including 600mm deep 32mm laminate bench top with 3No. 600mm drawers beneath, 2No. 600mm wide full-height cabinets, 2No. 900mm wide overhead cabinets with lift-up doors.

Note: only available in conjunction with option IP1-5

FLOORPLAN OPTIONS


 **4**  **2**  **2**



Option G-1

Provide extension to Garage to create additional Storage area.
Increases area by 4.53m².
Increases width by 840mm.

FLOORPLAN OPTIONS



 **4**  **2**  **2**



Option G-2

Provide extension to Garage to create Storage area including additional 2057 x 850 aluminium awning window. Increases area by 11.48m². Increases width by 2040mm.

FLOORPLAN OPTIONS

 **4**  **2**  **2**



Option G-3

Provide triple car Garage including additional Garage door as per colour selection.
Increases area by 24.26m².
Increases width by 3600mm.