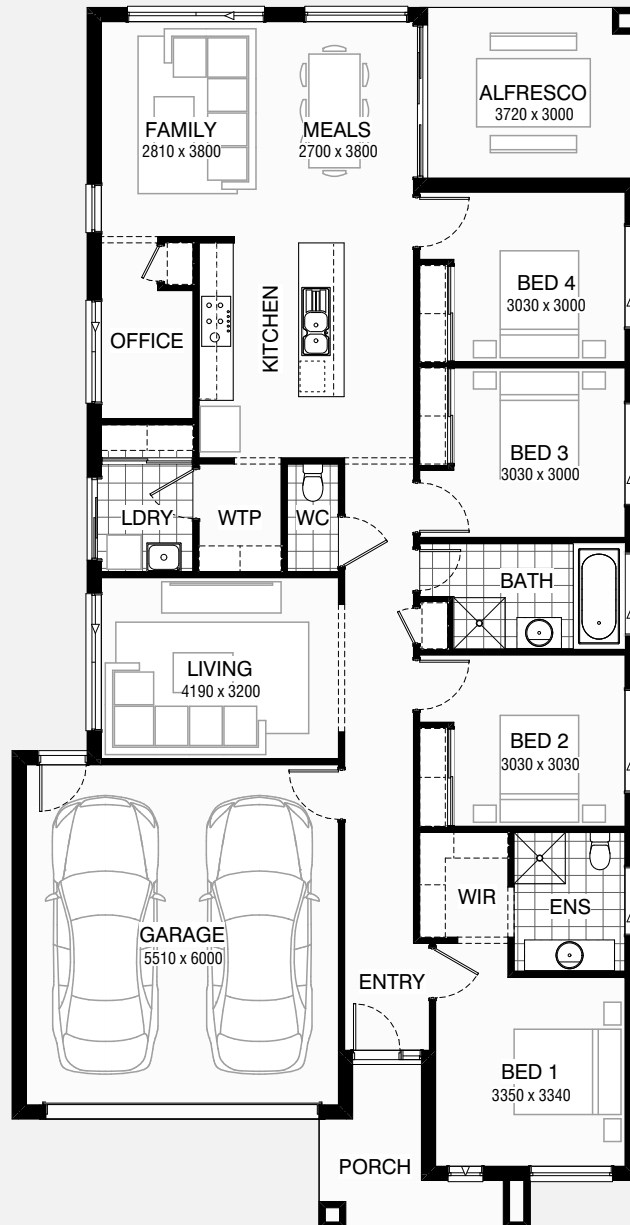


# CYPRESS 207

4 2 2

Total squares 22.3sq



**B**  
SERIES

Minimum  
Lot Width  
**12.5m**

Minimum  
Lot Length  
**28.0m**

**Design Dimensions**  
11,030mm(W) x 21,470mm(L),

**Facade Choices**  
Brentwood, Glendale, Inglewood,  
Malibu, Northridge, Pasadena, Santa Monica.  
Details based on Inglewood façade floorplan (illustrated)

## DESIGN DIMENSIONS

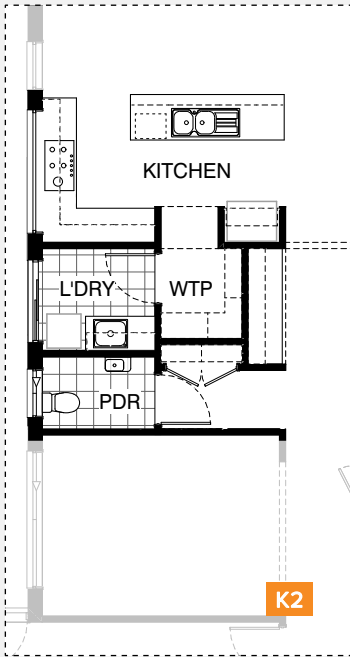
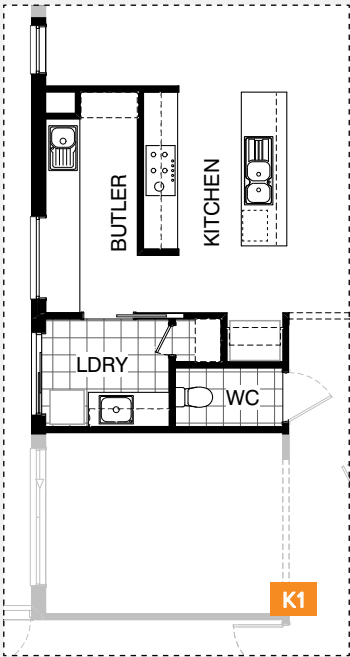
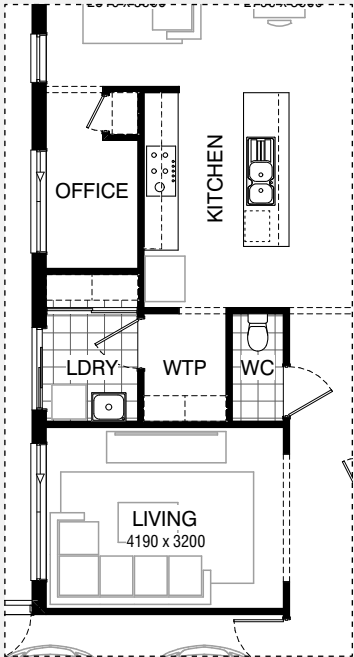
Residence	153.8m <sup>2</sup>	16.6sq
Garage	36.4m <sup>2</sup>	3.9sq
Porch	6.2m <sup>2</sup>	0.7sq
Alfresco	11.2m <sup>2</sup>	1.2sq
<b>Total</b>	<b>207.6m<sup>2</sup></b>	<b>22.3sq</b>

**Burbank** 

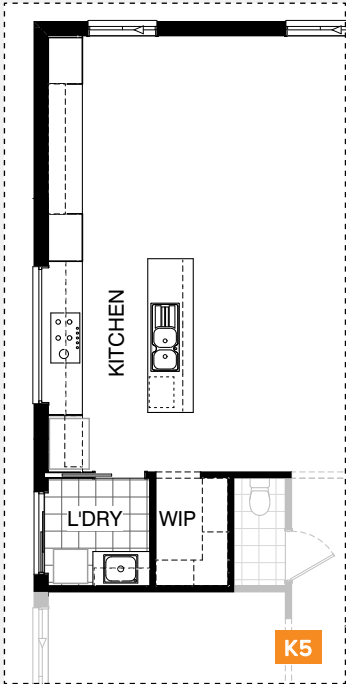
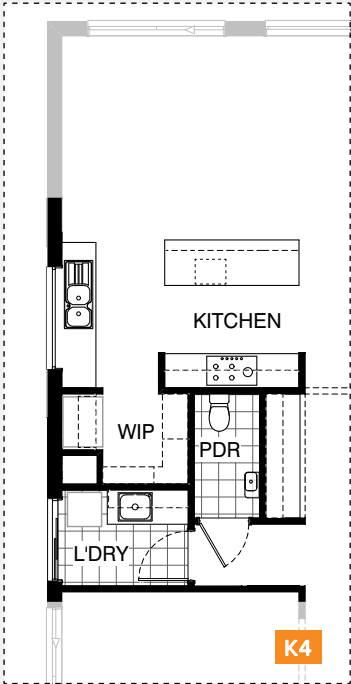
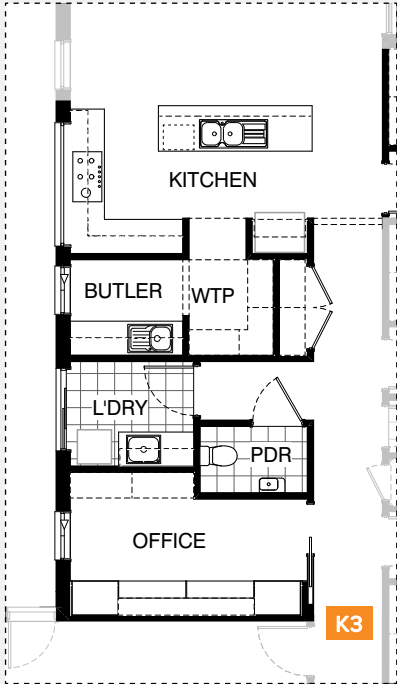
\*Copyright conditions. All photos and illustrations are representative only. Floor plans and specifications may be varied by Burbank without notice, the dimensions are diagrammatic only and a Building Contract with final drawings will display correct dimensions and detail. All designs are the property of Burbank and must not be used, reproduced, copied or varied, wholly or in part without written permission from an authorised Burbank representative. Copyright Burbank Australia Pty Ltd. ABN 91 007 099 872. Builders Registration Number CDB-U-52603.



KITCHEN OPTIONS

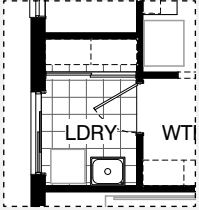


Master Kitchen Design

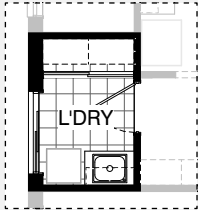




## LAUNDRY OPTIONS

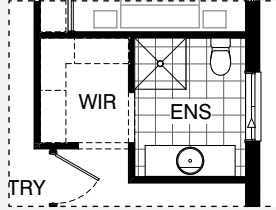


Master Laundry Design

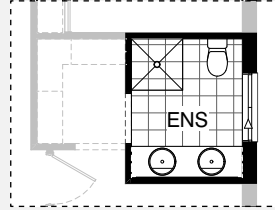


LD1

## ENSUITE OPTIONS

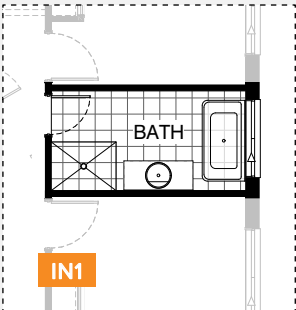


Master Ensuite Design

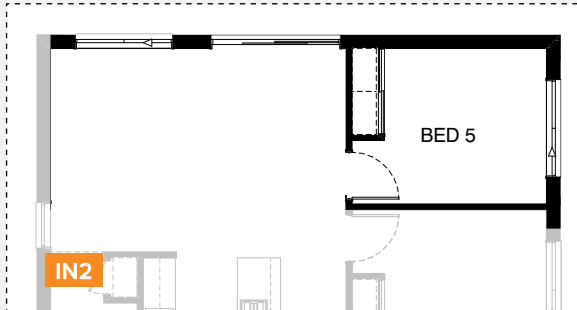


EN1

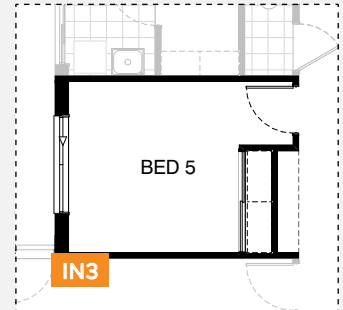
## INTERNAL OPTIONS



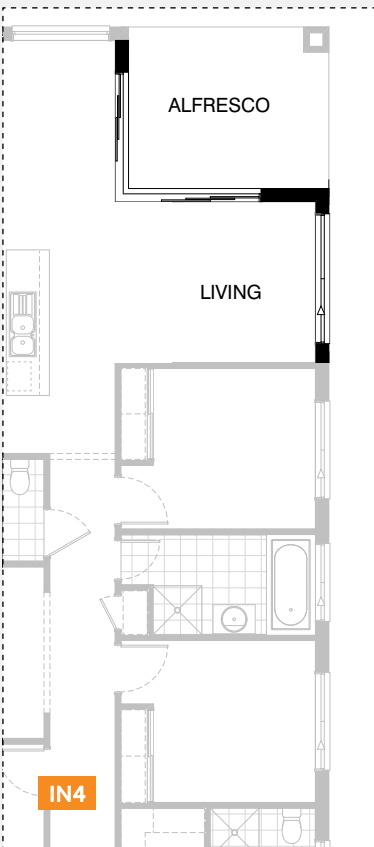
IN1



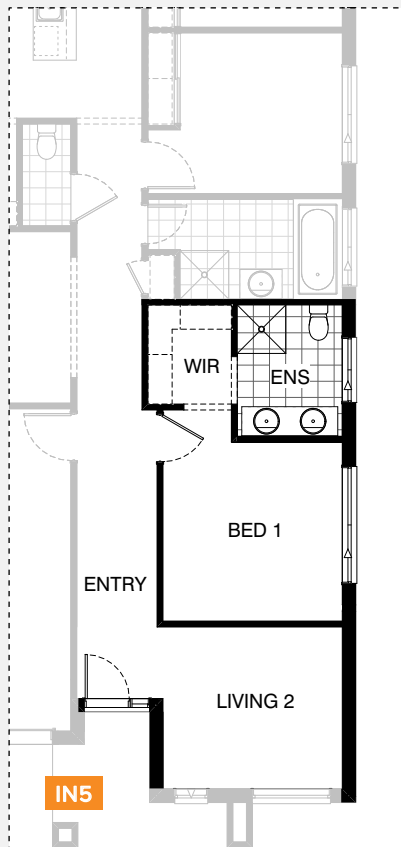
IN2



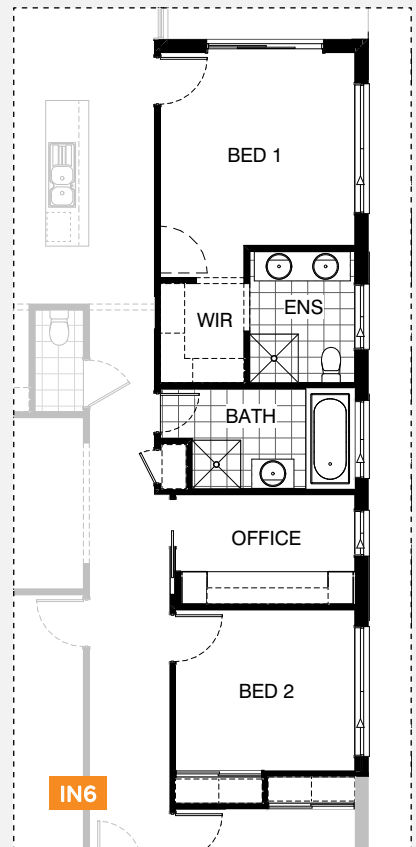
IN3



IN4



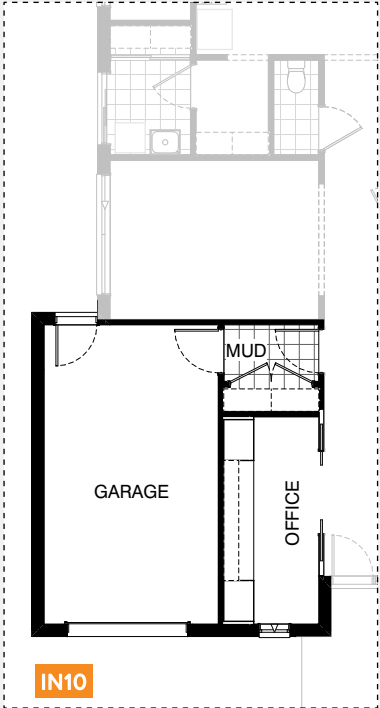
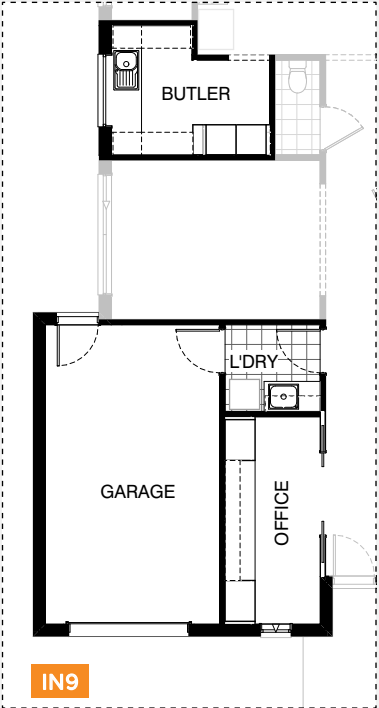
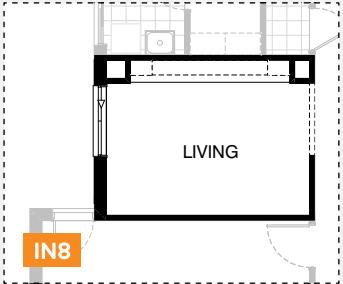
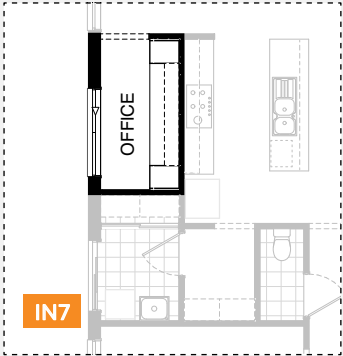
IN5



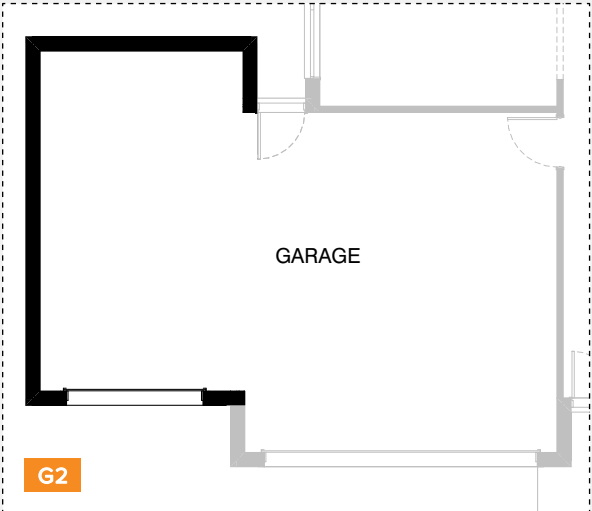
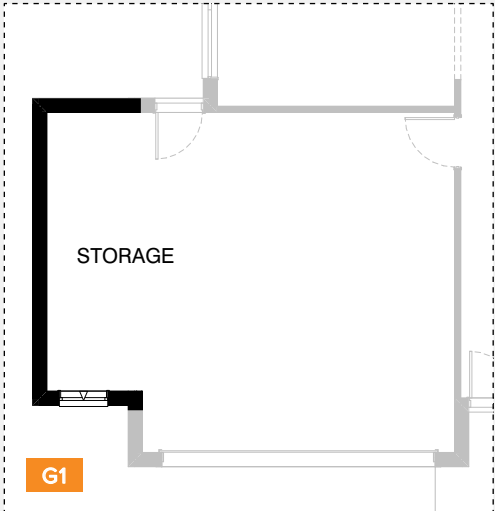
IN6



INTERNAL OPTIONS



GARAGE OPTIONS



# CYPRESS 207

## OPTION DESCRIPTIONS

### Kitchen Option 01

Provide Butler's Pantry in lieu of Walkthrough Pantry and Office, including: 20mm stone benchtop, 1No. 900mm base cupboard, 3No. 800mm base cupboards, 1No. open shelf over relocated Ref space, 1No. built-in Linen cupboard with 520mm hinged door, 4No. 450mm shelves. Relocate WC Provide AFW1215 fixed window. Laundry includes: 1No. 870mm cavity sliding door, stainless steel inset trough, 1No. 900mm base cupboard, 1No. 450mm base cupboard, 1No. 900mm overhead cupboard, 1No. 450mm overhead cupboard, 32mm laminate benchtop and tiled splashback to suit. Note: Kitchen cabinetry to remain unchanged.

### Kitchen Option 02

Provide Kitchen upgrade option with L-shaped benchtop, relocating the Ref space and Laundry. Provide Study Nook in lieu of Office and Powder in lieu of WC. Kitchen includes: 1No. 900mm retractable rangehood, 1No. 900mm under bench oven and cooktop, 1No. 450mm drawer unit, 1No. dishwasher provision, 1No. microwave provision with pot drawer, 1No. 900mm base cupboard, 1No. 900mm corner base cupboard, 2No. 700mm base cupboards, 1No. 350mm base cupboard, 2No. 700mm overhead cupboards, 1No. 350mm overhead cupboard, 2No. 300mm overhead cupboards, 1No. 600mm corner overhead cupboard, 1No. open shelf over Ref space, 1No. AFW0521 fixed window over cooker. WC BUTLER KITCHEN Walk-through Pantry includes: 4No. 450mm shelves, 4No. 300mm shelves. Laundry includes: 1No. 870mm hinged door, stainless steel inset trough, 1No. 800mm base cupboard, 1No. 350mm base cupboard, 1No. 800mm overhead cupboard, 1No. 350mm overhead cupboard, 32mm laminate benchtop and tiled splashback to suit. Study Nook joinery includes: 1No. 600mm deep 32mm thick laminate desk, 1No. 450mm wide drawer unit beneath desk, 2No. 300mm deep 60mm thick open shelves over desk. Powder includes: 1No. wall basin Provide Linen cupboard with 2No. 620mm hinged doors and 4No. 300mm shelves. Flip hinged door and built-in Robe locations to Bed 4.

### Kitchen Option 03

Provide Kitchen upgrade option with L-shaped benchtop, relocating the Ref space, Laundry, WC and Office. Kitchen includes: 1No. 900mm retractable rangehood, 1No. 900mm under bench oven and cooktop, 1No. 450mm drawer unit, 1No. dishwasher provision, 1No. microwave provision with pot drawer, 1No. 900mm base cupboard, 1No. 900mm corner base cupboard, 2No. 700mm base cupboards, 1No. 350mm base cupboard, 2No. 700mm overhead cupboards, 1No. 350mm overhead cupboard, 2No. 300mm overhead cupboards, 1No. 600mm corner overhead cupboard, 1No. open shelf over Ref space, 1No. AFW0521 fixed window over cooker. Walk-through Pantry includes: 4No. 450mm shelves. Butler's Pantry includes: 1No. single bowl sink, 1No. 700mm base cupboard, 2No. 600mm base cupboards, 1No. 700mm overhead cupboard, 2No. 600mm overhead cupboards, 20mm stone benchtop with tiled splashback. Laundry includes: 870mm hinged door, stainless steel inset trough, 1No. 800mm base cupboard, 1No. 450mm base cupboard, 1No. 800mm overhead cupboard, 1No. 450mm overhead cupboard, 32mm laminate benchtop and tiled splashback to suit. Office joinery includes: 1No. 600mm deep 32mm thick laminate desk, 2No. 800mm full height laminate Storage cupboards with 6No. 450mm shelves, 2No. 60mm thick 300mm deep open shelves over desk, 4No. 450mm shelves, 1No. ASW1809 sliding window. Powder includes: 1No. wall basin Provide Linen cupboard with 2No. 720mm hinged doors and 4No. 450mm shelves. Flip hinged door and built-in Robe locations to Bed 4.

### Kitchen Option 04

Provide Kitchen upgrade option with 3-way bench top, relocating the Ref space, Laundry, WC and provide Study Nook in lieu of Office. Kitchen includes: 1No. 900mm retractable range hood, 1No. 900mm under bench oven and cooktop, 1No. 450mm drawer unit, 1No. dishwasher provision, 1No. microwave provision with pot drawer, 2No. 900mm base cupboards, 2No. 700mm base cupboards, 2No. 600mm base cupboards, 2No. 700mm overhead cupboards, 1No. open shelf over Ref space, 1No. AFW1218 fixed window over Dishwasher Walk-in Pantry includes: 4No. 450mm shelves, 4No. 300mm shelves. Laundry includes: 870mm hinged door, stainless steel inset trough, 1No. 900mm base cupboard, 1No. 450mm base cupboard, 1No. 900mm overhead cupboard, 1No. 450mm overhead cupboard, 32mm laminate bench top and tiled splash back to suit. Provide 4No. 450mm shelves to convert Coats cupboard to Passage into Linen. Study Nook joinery includes: 1No. 600mm deep 32mm thick laminate desk, 1No. 450mm wide drawer unit beneath desk, 2No. 60mm thick 300mm deep open shelves over desk. Powder includes: 1No. wall basin Note: option not available in conjunction with Option Internal01

### Kitchen Option 05

Provide alternate Kitchen option with Study Nook in lieu of Office. Kitchen includes: 1No. 900mm retractable rangehood, 1No. 900mm under bench oven and cooktop, 1No. 450mm drawer unit, 1No. dishwasher provision, 1No. microwave provision with pot drawer, 3No. 900mm base cupboards, 2No. 900mm overhead cupboards, 1No. open shelf over Ref space, 1No. AFW0524 fixed window over cooker. Walk-in Pantry includes: 4No. 450mm shelves, Laundry includes: 1No. 870mm cavity sliding door, stainless steel inset trough, 1No. 900mm base cupboard, 1No. 900mm overhead cupboard, 32mm laminate benchtop and tiled splashback to suit. Study Nook joinery includes: 1No. 600mm deep 32mm thick laminate desk, 2No. 800mm full height laminate Storage cupboards with 5No. 450mm shelves, 2No. 300mm deep 60mm thick open shelves over desk. Provide 2No. ASW2012 sliding windows to Family in lieu of standard.

### Laundry Option 01

Provide Laundry upgrade with laminate base and overhead cupboards and stainless steel inset trough, including: 1No. 800mm base cupboard, 1No. 800mm overhead cupboard, 32mm laminate benchtop and tiled splashback to suit.

### Ensuite Option 01

Provide Ensuite upgrade option including: 1No. 1782mm vanity with double basins, 1950mm wide wall-to-wall benchtop in lieu of standard.

### Internal Option 01

Provide Bathroom upgrade option, including: 1No. 1500mm freestanding bath, 1No. 1282mm vanity with single basin, 900mm x 1200mm tiled shower base, Remove Coats cupboard to Passage. Note: option not available in conjunction with Option Kitchen04

### Internal Option 02

Provide 5th Bedroom option in lieu of Alfresco, including: 1No. built-in Robe with 450mm shelf and hanging rail, 1No. 870mm hinged door, 2No. ASW1218 sliding window, 1No. ASD2124 sliding door in lieu of standard.

### Internal Option 03

Provide additional Bedroom option in lieu of Living area, including: built-in Robe with sliding doors, 450mm shelf and hanging rail, 1No. 870mm hinged door, ASW1218 sliding window in lieu of standard, Option also provides Nook with bulkhead over to Entry Passage.



# CYPRESS 207

## OPTION DESCRIPTIONS

### Internal Option 04

Provide additional Living area option in lieu of Bed 4, including: Removing built-in Robe and hinged door, 1No. ASW1224 sliding window in lieu of standard, 1No. ACSD2127-24 corner sliding door in lieu of standard.

### Internal Option 05

Provide Bed 1 option which moves it behind Living to the front of the home, including: 1No. ASW2021 sliding window in lieu of standard. Ensuite has 1782mm vanity with double basins. Front Entry door moves 360mm towards Porch to allow for larger opening to new Living. Note: Porch reduces and Entry increases by 0.58m<sup>2</sup>

### Internal Option 06

Provide Bed 1 option which moves it behind Living to the front of the home, Provide Bed 1 option which moves it to the rear of the home, including: ASD2121 sliding door and ASW0524 sliding window to Bed 1. Ensuite has 1782mm vanity with double basins. Alternate Bed 1 hinged door location shown dashed - door to be located here if options Kitchen02, Kitchen03 or Kitchen04 are chosen. Provide Home Office in lieu of Bed 4, with built-in joinery to new Home Office, including: 1No. 600mm deep 32mm thick laminate desk, 2No. 300mm deep 60mm thick open shelves 2No. 450mm full height laminate Storage cupboards with 6No. 450mm shelves, 1No. 870mm cavity sliding door, ASW1809 sliding window in lieu of standard.

### Internal Option 07

Provide built-in joinery option to Home Office, including: 1No. 600mm deep 32mm thick laminate desk, 2No. 300mm deep 60mm thick open shelves 2No. 450mm full height laminate Storage cupboards with 6No. 450mm shelves, Remove built-in plaster-lined store.

### Internal Option 08

Provide built-in joinery option to Living, including: 1No. 450mm deep 32mm thick laminate bench top, 4No. 800mm tv cabinets, 2No. 400mm open shelf units, 2No. 60mm thick 300mm deep open shelves, 2No. plaster lined voids as shown. Provide ASW2015 sliding window in lieu of standard.

### Internal Option 09

Provide Home Office/Alternate laundry option with Single car Garage in lieu of Double Garage, and Butler's Pantry in lieu of Walk-in Pantry/Laundry, including: Laundry with 870mm hinged door, stainless steel inset trough, 1No. 700mm base cupboard, 1No. 350mm base cupboard, 1No. 700mm overhead cupboard, 1No. 350mm overhead cupboard, 32mm laminate benchtop and tiled splashback to suit. Home Office with built-in joinery includes: 1No. 600mm deep 32mm thick laminate desk, 2No. 800mm full height laminate Storage cupboards, 2No. 300mm deep 60mm thick open shelves over desk, 2No. 820mm bi-parting cavity sliding doors, 1No. AAWF2006 feature awning window. Butler's Pantry includes: 1No. 180mm wide full height wine rack, 2No. 600mm oven towers with microwave provisions, 600mm deep 20mm thick stone bench top with single bowl sink, 2No. 900mm base cupboards, 2No. 450mm deep adjustable shelf units, 1No. AFW1215 fixed window. Provide 1No. 2410mm wide Garage door to new single Garage in lieu of standard.

### Internal Option 10

Provide Home Office/Mud room option with Single car Garage in lieu of Double Garage, including: Tiled Mud room with 870mm hinged door, 1No. built-in Linen cupboard with 2No. 820mm hinged doors and 4No. 450mm shelves Home Office with built-in joinery includes: 1No. 600mm deep 32mm thick laminate desk, 2No. 800mm full height laminate Storage cupboards, 2No. 300mm deep 60mm thick open shelves over desk, 2No. 820mm bi-parting cavity sliding doors, 1No. AAWF2006 feature awning window. Provide 1No. 2410mm wide Garage door to new single Garage in lieu of standard.

### Garage Option 01

Provide extension to Garage to create additional Storage area including additional AAWF2009 feature awning window. Increases width of the home by 1680mm. Increases area of the home by 9.07m<sup>2</sup>

### Garage Option 02

Provide extension to Garage to create Triple Car Garage including additional 2290mm x 2410mm garage door as per colour selection. Increases width of the home by 3600mm. Increases area of the home by 23.85m<sup>2</sup>

