

#### FLOORPLAN OPTIONS

We personalise our floorplans. Talk to us about our huge range of ready-to-go design options.

#### Facades available:

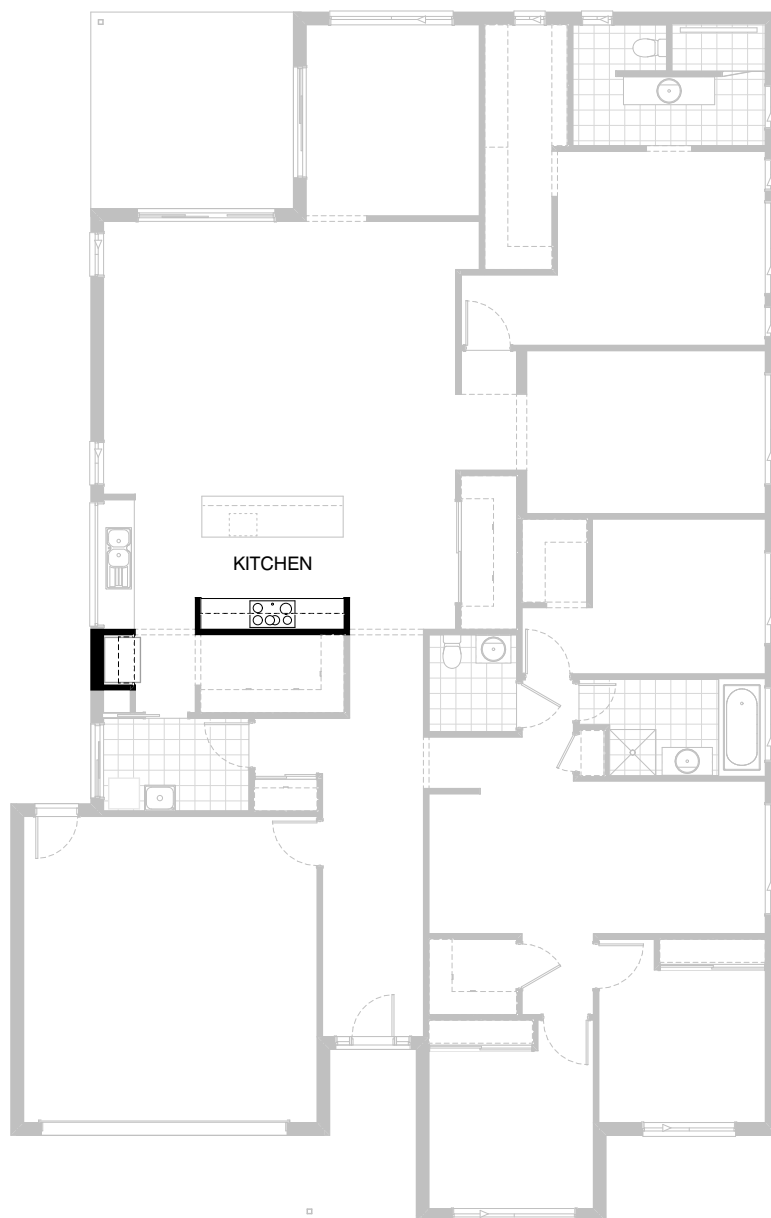
Coastal, Delta, Kingston, Nouveau  
Salisbury, Traditional, York

**Overall home width 14.99m**

**Overall home length 23.63m**

Residence	254.9m <sup>2</sup>	27.4sq
Garage	38.2m <sup>2</sup>	4.1sq
Porch	6.7m <sup>2</sup>	0.7sq
Alfresco	15.2m <sup>2</sup>	1.6sq
<b>Total</b>	<b>315.0m<sup>2</sup></b>	<b>33.9sq</b>

Listed details based on Traditional facade floorplan (illustrated)

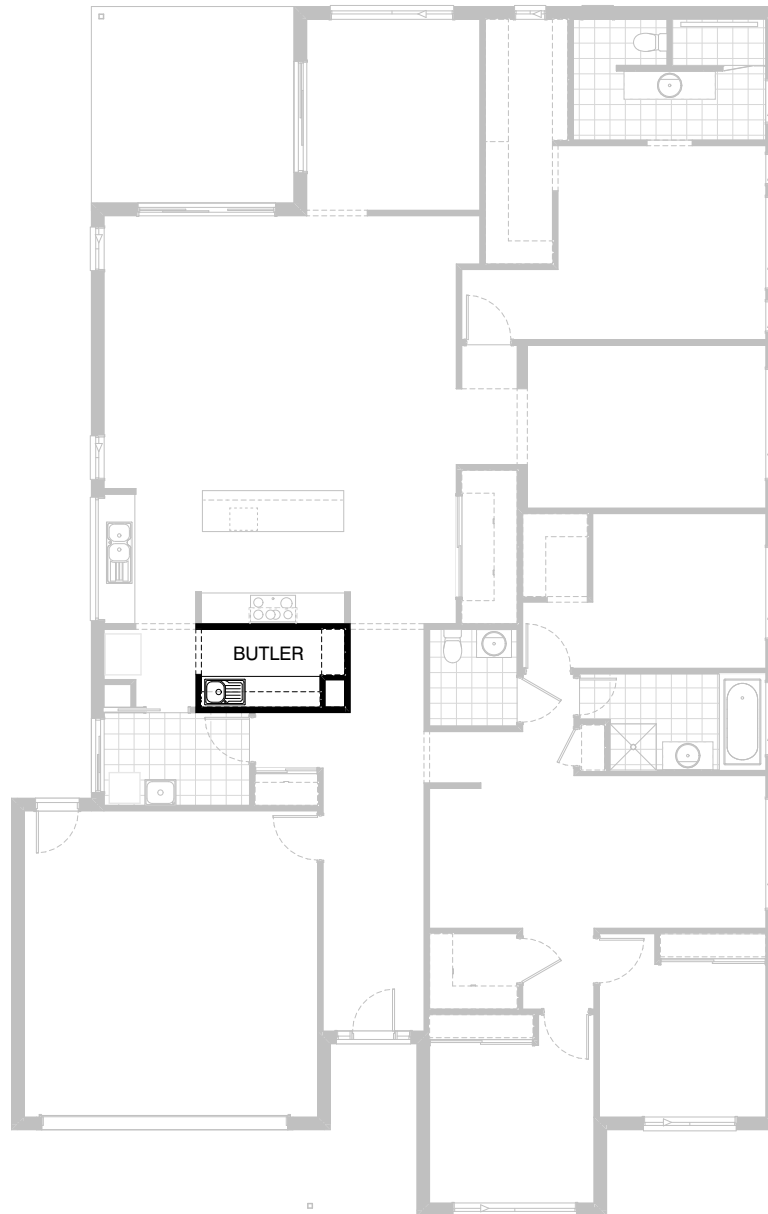


## Option Kitchen01

Provide Kitchen upgrade option including:  
 900mm open shelf over Ref. space,  
 2No. 900mm overhead cupboards.

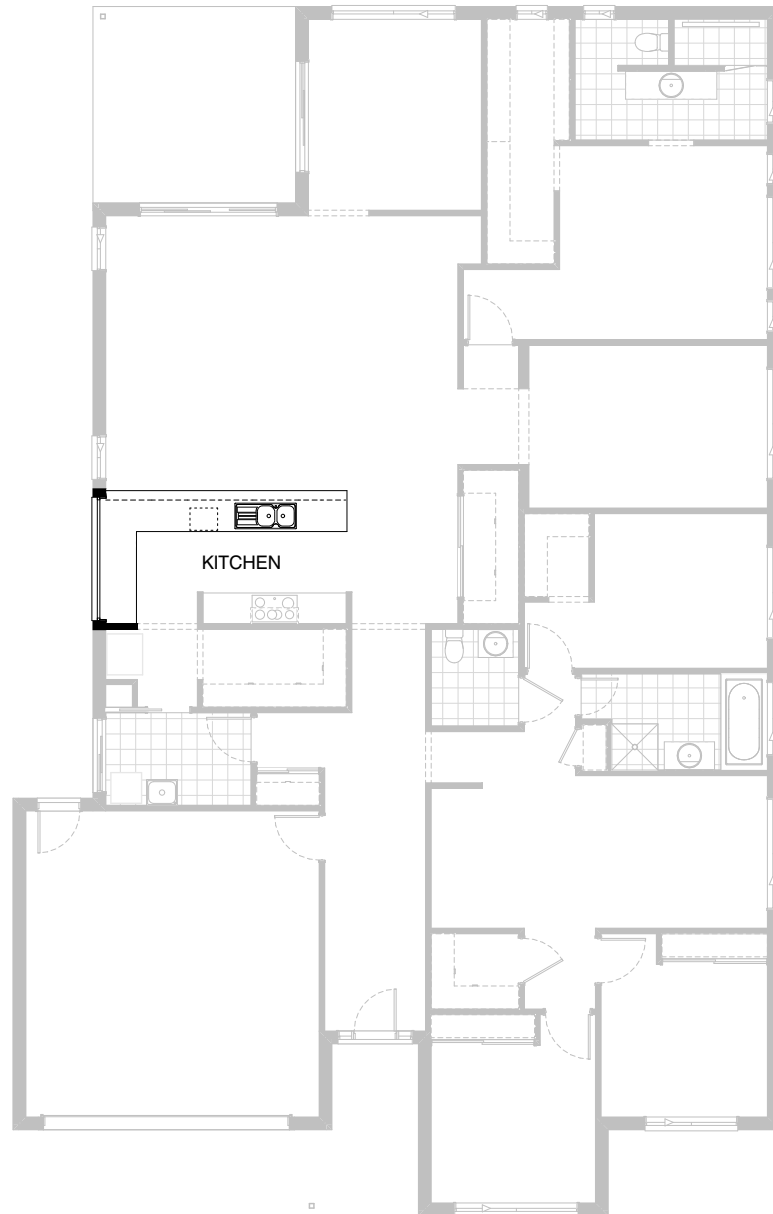

**2.5**

**4**  
 +study

**2**


## Option Kitchen02

Provide Kitchen upgrade option with Butler's Pantry in lieu of Walk-in Pantry, including:  
 additional laminate benchtop, single bowl sink,  
 1No. 800mm base cupboard,  
 2No. 700mm base cupboards,  
 2No. 300mm deep 60mm thick open shelves,  
 plaster-lined void to corner with 450mm shelving,  
 additional tiled splashback to suit.



### Option Kitchen03

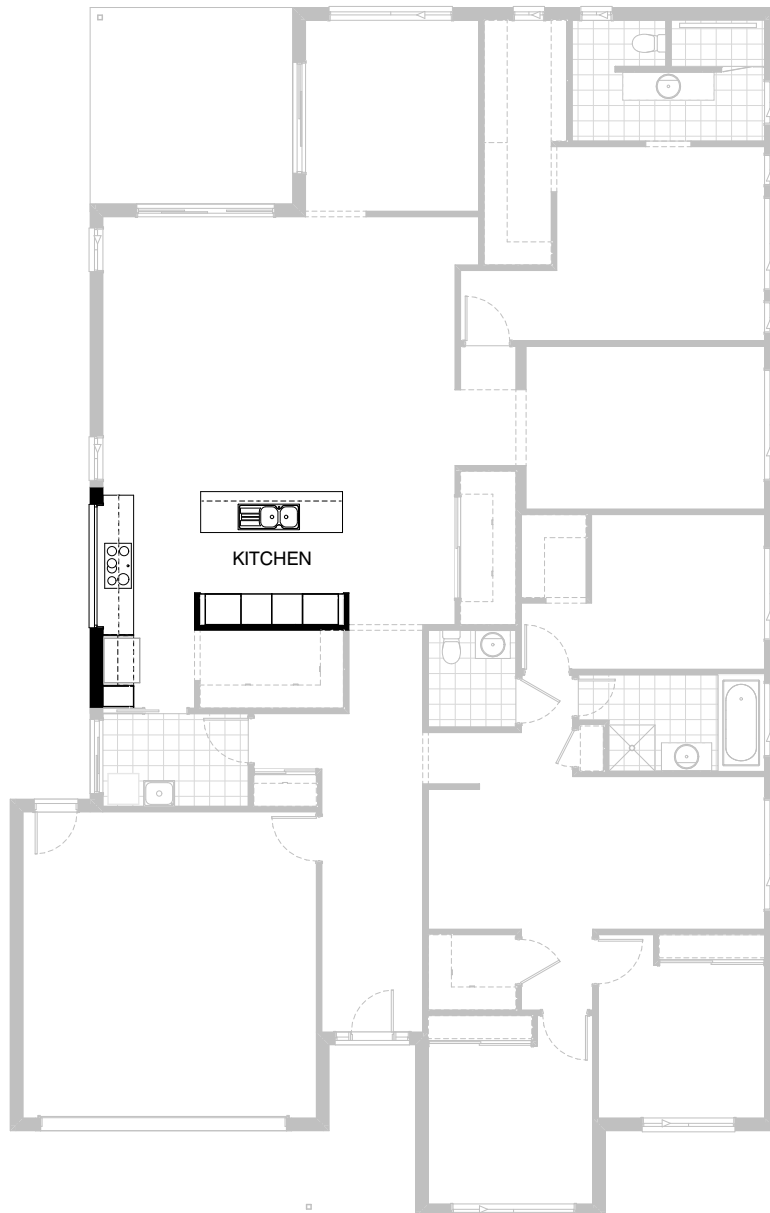
Provide L-shaped Kitchen upgrade option including:  
 additional benchtop, dishwasher provision,  
 1No. 450mm drawer unit,  
 1No. 900mm base cupboard,  
 1No. 900mm corner base cupboard with bi-fold door,  
 3No. 700mm base cupboards,  
 1No. 450mm base cupboard.  
 Cabinetry to cooker bench to remain unchanged.


**4**

**2.5**

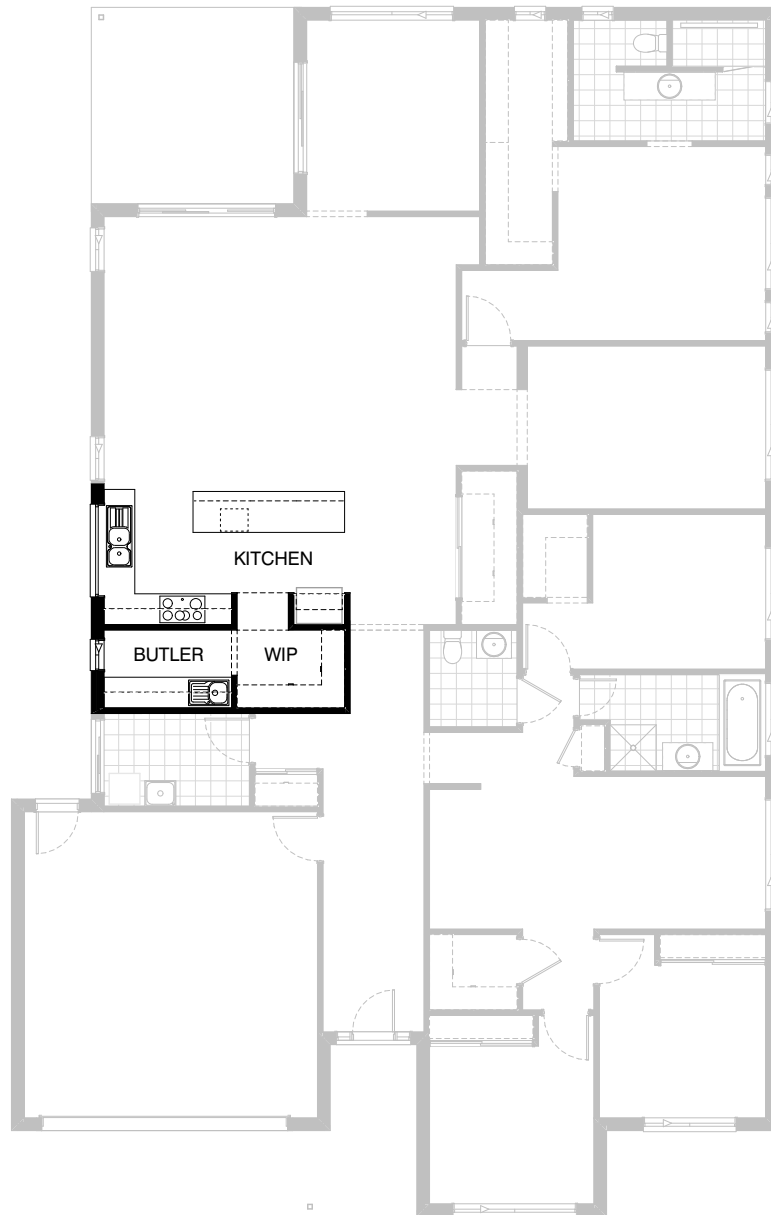
**4**

+study


**2**


## Option Kitchen04

Provide Kitchen upgrade option including:  
 relocated sink and cooktop,  
 900mm retractable rangehood,  
 900mm cooktop, dishwasher provision,  
 1No. 450mm drawer unit,  
 4No. 900mm base cupboards,  
 1No. 800mm base cupboard,  
 2No. 600mm laminate oven towers  
 with microwave provisions,  
 2No. 900mm overhead cupboards,  
 2No. 700mm full height laminate Pantry cupboards,  
 1No. 400mm full height laminate Pantry cupboard,  
 1No. 970mm laminate open shelf over Ref. space  
 with end panels.  
 Provide 514mm x 2410mm aluminium fixed window  
 with no bottom reveal  
 behind cooker in lieu of standard.  
 Remove bulkhead and plaster-lined void  
 to accommodate.



## Option Kitchen05

Provide L-shaped Kitchen upgrade option with island bench and Butler's Pantry in addition to Walk-in Pantry, including:

**Kitchen:**  
 additional laminate benchtop and tiled splashback,  
 relocated Ref. space with  
 900mm laminate open shelf,  
 900mm retractable rangehood,  
 900mm under bench oven,  
 900mm cooktop, dishwasher provision,  
 1No. 450mm drawer unit,  
 3No. 900mm base cupboards,  
 1No. 900mm blind corner base cupboard with 450mm door,

2No. 450mm base cupboards,  
 2No. 450mm overhead cupboards,  
 1No. 600mm open shelf overhead cupboard,  
 1No. 1200mm x 1810mm aluminium fixed window with no bottom reveal in lieu of standard.

**Butler's Pantry:**  
 additional laminate benchtop and tiled splashback,  
 1No. single bowl sink,  
 3No. 800mm base cupboards,  
 2No. 800mm overhead cupboards,  
 1No. 800mm open shelf overhead cupboard,  
 1No. 1800mm x 610mm aluminium sliding window.  
 Remove cavity sliding door to Laundry.


**2.5**

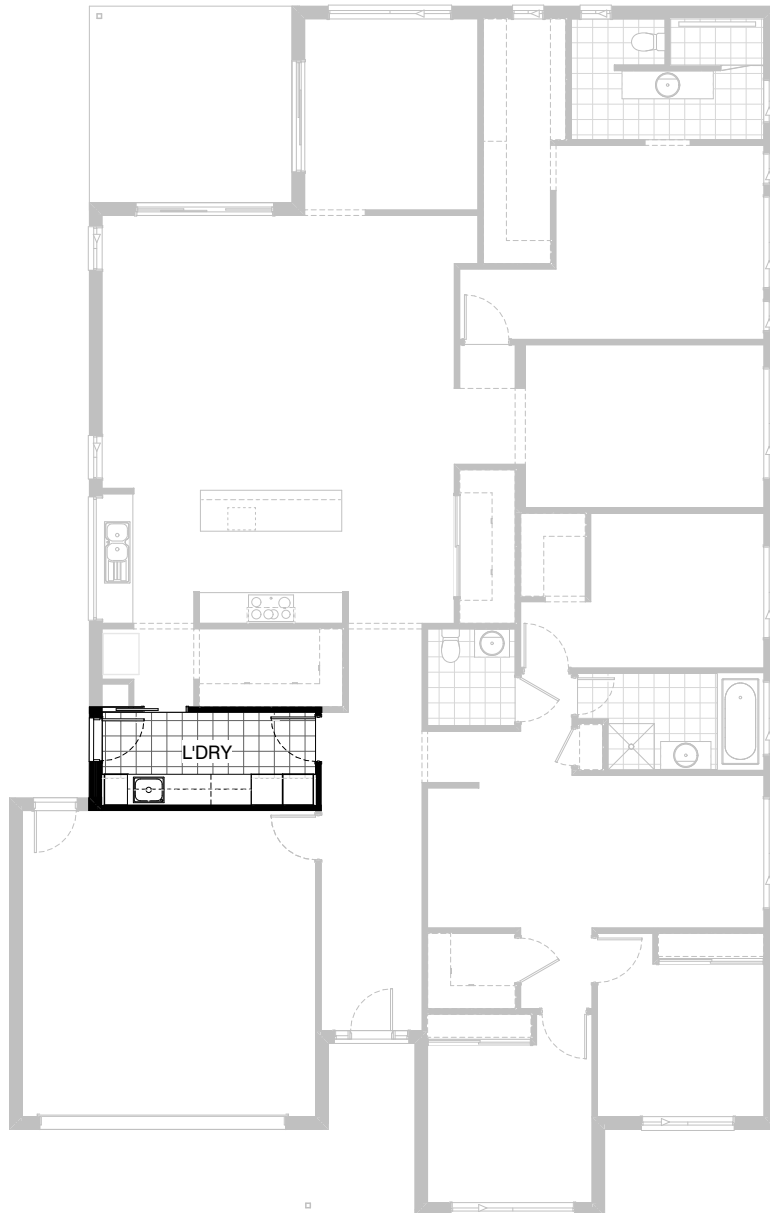
**4**  
 +study

**2**


## Option Laundry01

Provide Laundry upgrade option with laminate base and overhead cupboards and stainless steel inset trough, including:

- 2No. 800mm base cupboards,
- 2No. 800mm overhead cupboards,
- 1No. 400mm full height laminate Broom cupboard,
- additional benchtop and tiled splashback to suit.



## Option Laundry02

Provide Laundry upgrade option with laminate base and overhead cupboards and stainless steel inset trough, including:

1No. 800mm base cupboard,  
 2No. 800mm overhead cupboards,  
 1No. 800mm open Laundry overhead cupboard,  
 2No. 600mm full height laminate Linen cupboards,  
 1No. 450mm full height laminate Broom cupboard,  
 additional benchtop and tiled splashback to suit.  
 Provide 2105mm x 850mm hinged access door  
 in lieu of standard

2110mm x 1450mm aluminium sliding door.

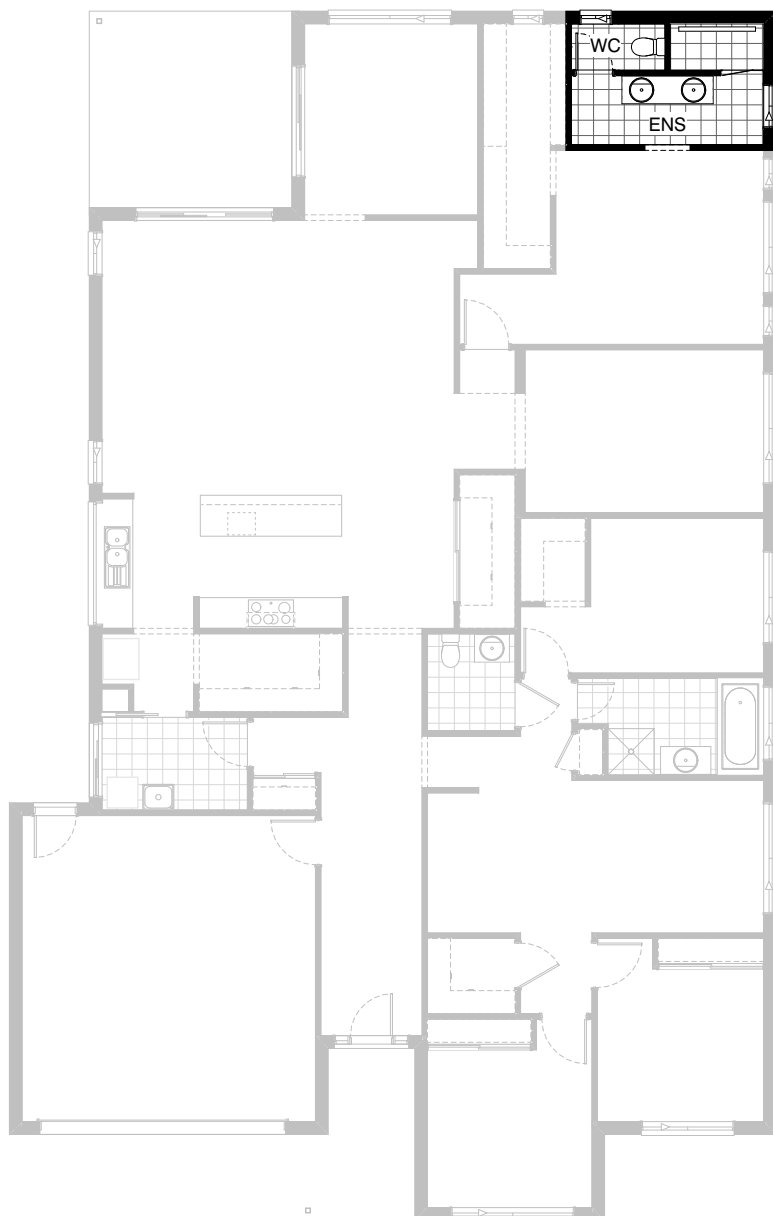
Option also provides open space under bench for washer and dryer side-by-side and raises the bench height to 950mm from FFL (kicker height raises).

Remove Linen cupboard to Passage to accommodate.

Note:

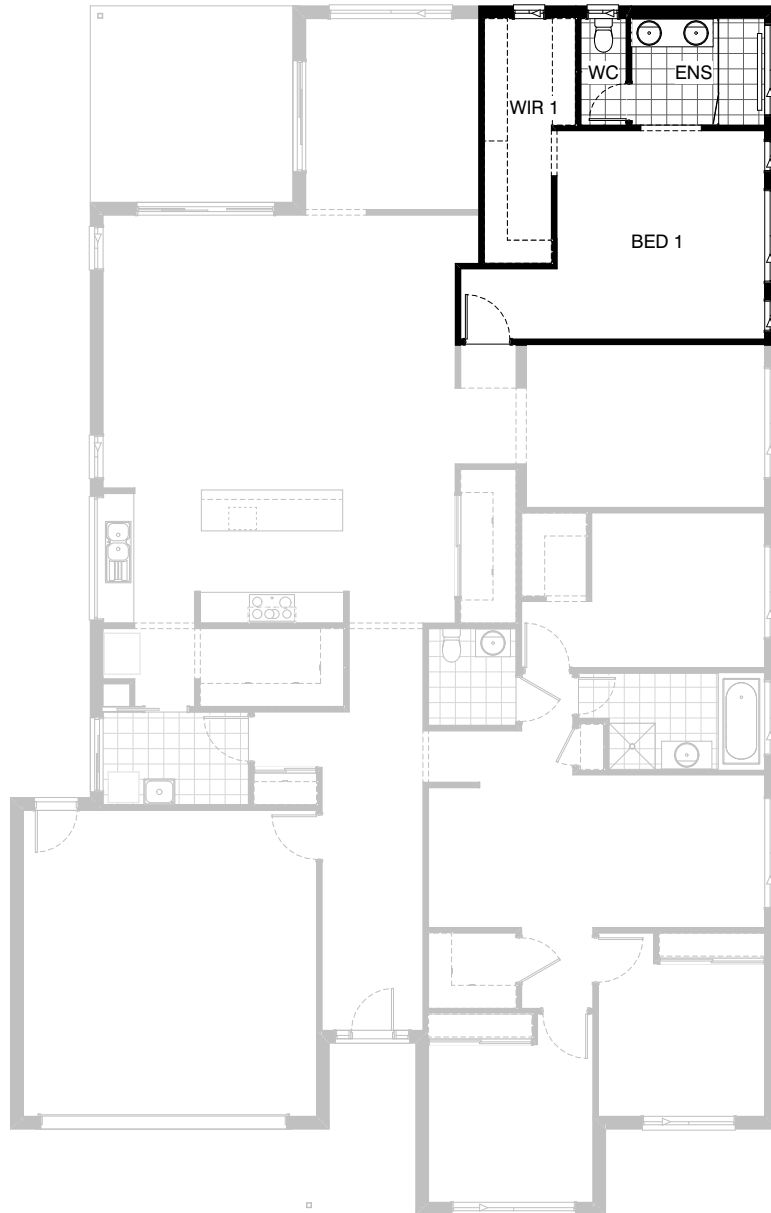
Option not available with option Internal05, External02.





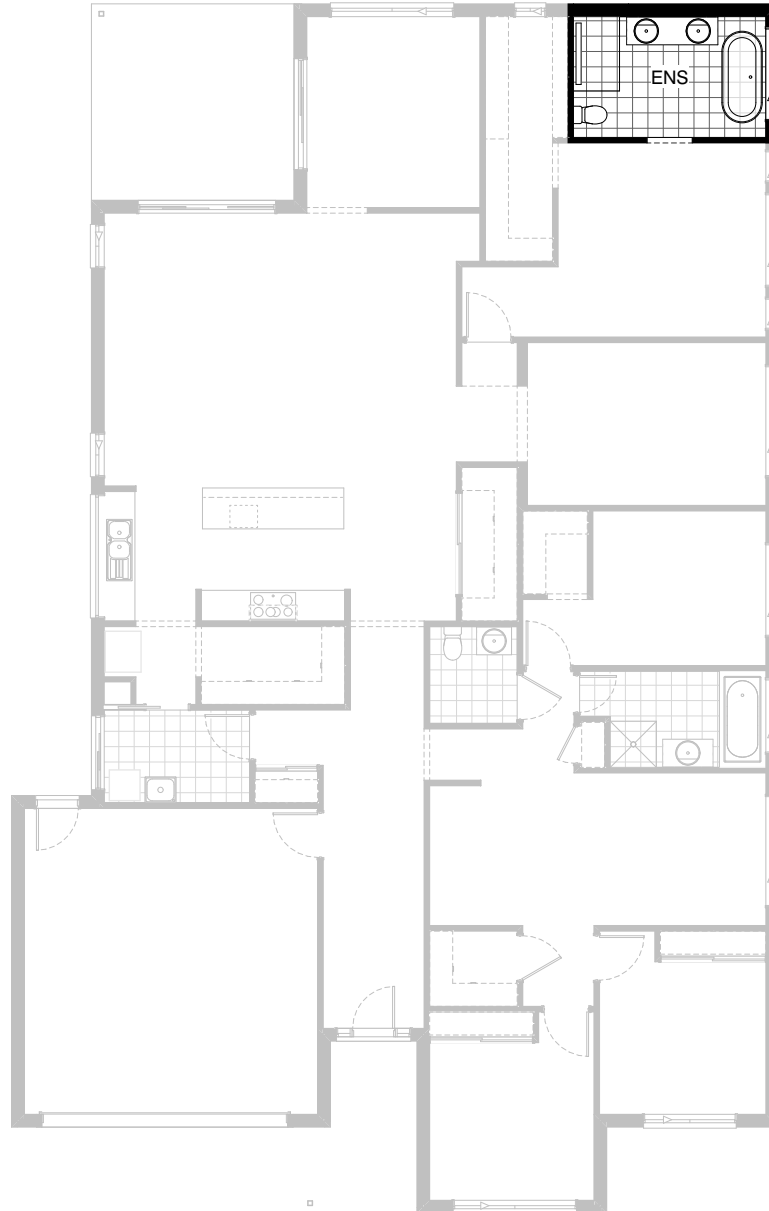
## Option Ensuite01

Provide Ensuite upgrade option including:  
 1782mm vanity with double basins,  
 enclosed WC with 720mm hinged door.



## Option Ensuite02

Provide Ensuite upgrade option with rearranged layout, including:  
 1582mm vanity with 1590mm benchtop butting into wall on one side with double basins,  
 2080mm x 900mm tiled shower base with grate drain, enclosed WC with 720mm hinged door.  
 Provide 1027mm x 610mm and 350mm x 1810mm aluminium sliding windows in lieu of standard.  
 Option increase the size of Bed 1 by 280mm and provides 1No. 450mm shelving to WIR in lieu of 300mm shelving.  
 Windows to Bed 1 relocate as shown.



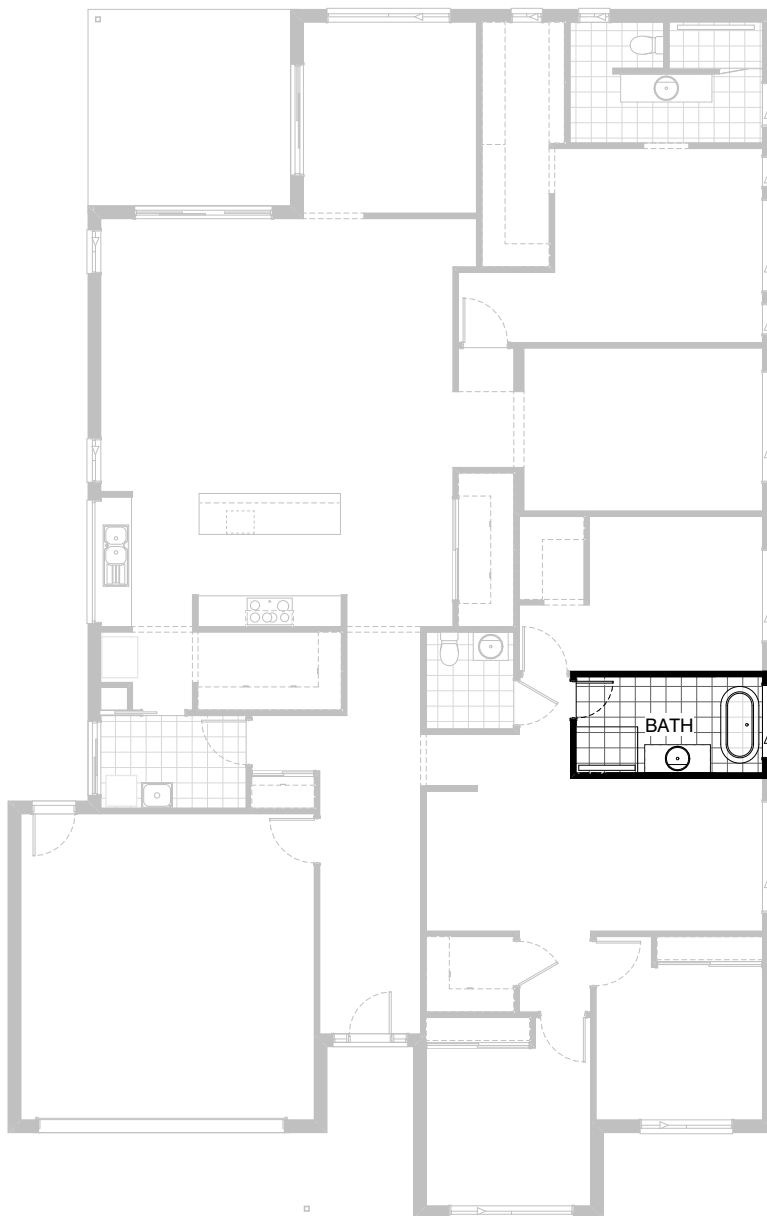
### Option Ensuite03

Provide Ensuite upgrade option with rearranged layout, including:  
 1782mm vanity with double basins,  
 1450mm x 900mm tiled shower base with grate drain,  
 1700mm freestanding bath, relocated toilet pan.  
 Provide 1200mm x 1810mm aluminium sliding window in lieu of standard.  
 Remove 1027mm x 620mm aluminium sliding window.



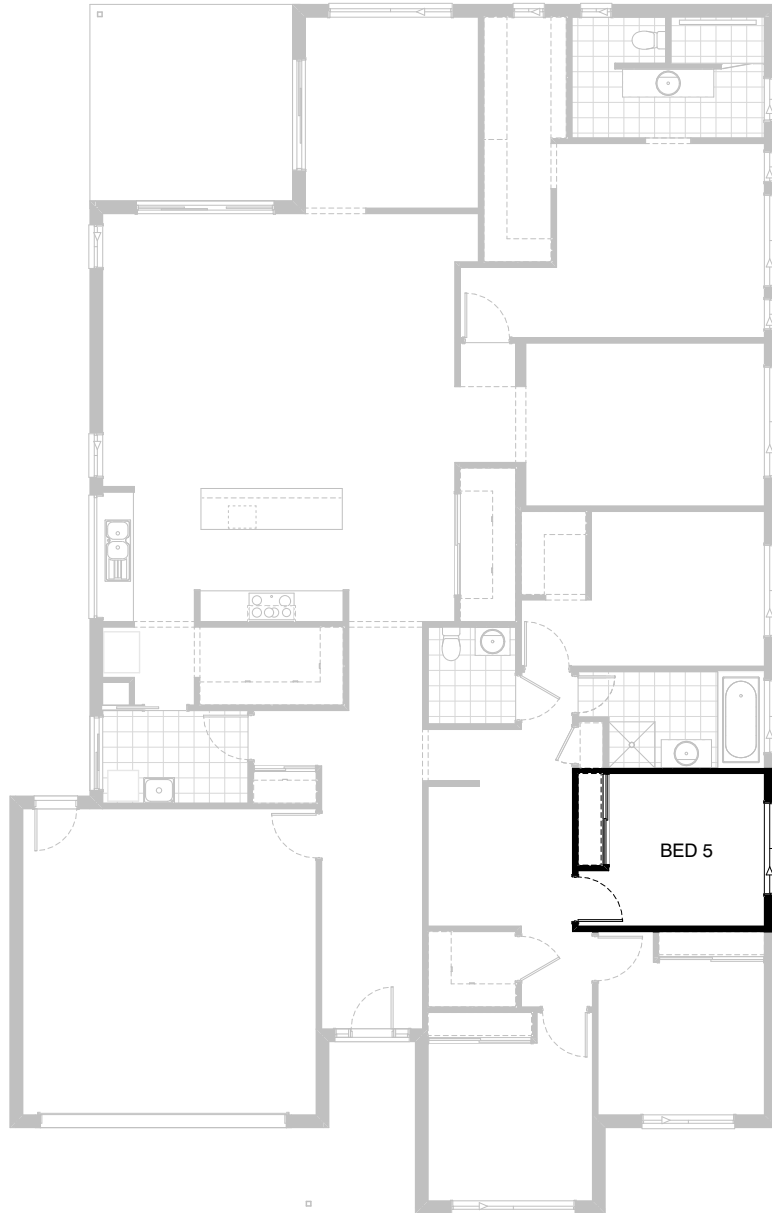
## Option Ensuite04

Provide Ensuite upgrade option with rearranged layout, including:  
 1782mm vanity with double basins,  
 1360mm x 900mm tiled shower base with grate drain,  
 1700mm freestanding bath,  
 enclosed WC with 720mm hinged door.  
 Provide 1200mm x 1810mm aluminium sliding window in lieu of standard.  
 Remove 1200mm x 620mm aluminium sliding window.



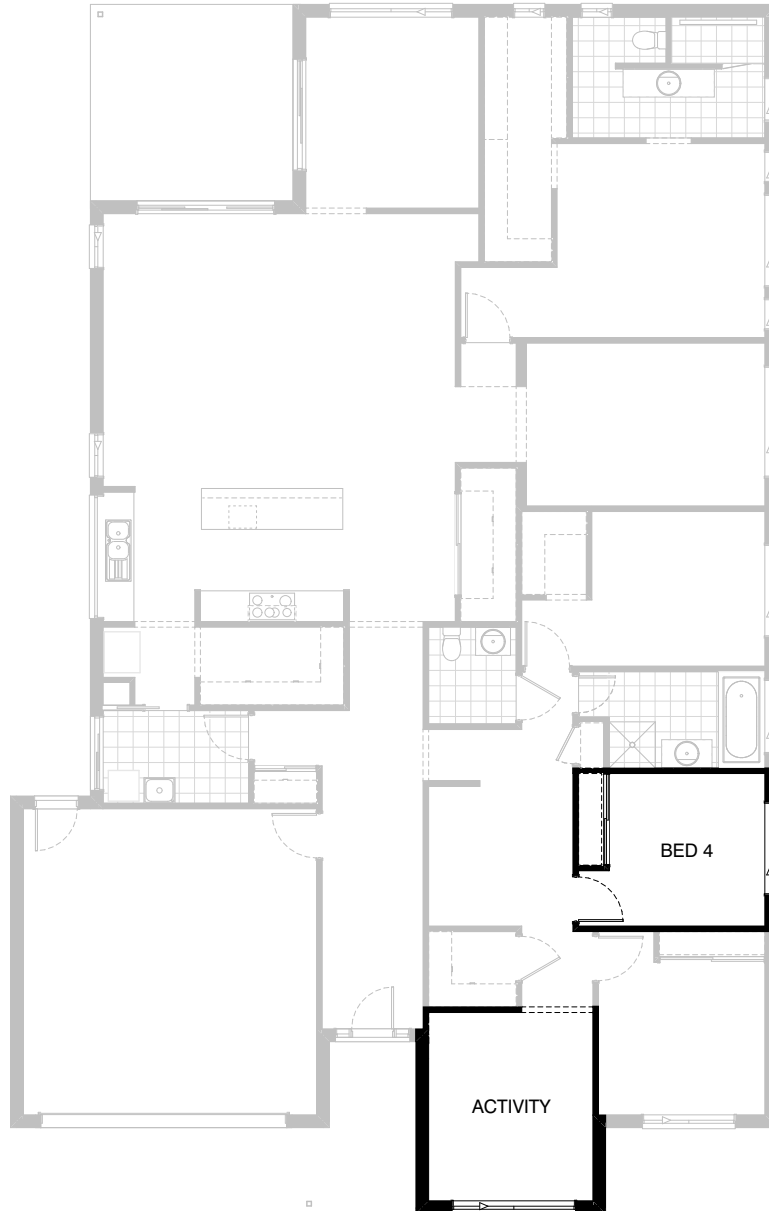
## Option Internal01

Provide Bathroom upgrade option, including:  
 1700mm freestanding bath,  
 1200mm x 900mm tiled shower base with grate drain,  
 1282mm vanity with single basin.  
 Remove Linen cupboard to Passage.



## Option Internal02

Provide 5th Bedroom option in lieu of Activity room, including:  
 built-in Robe with 450mm shelf and hanging rail with full-width sliding doors,  
 additional stud and plaster wall with 870mm hinged door,  
 1200mm x 1810mm aluminium sliding window in lieu of standard.



### Option Internal03

Provide floor plan option which swaps the locations of Bed 4 and Activity room.

Activity room moves to the front of the home and Bed 4 moves between the Bathroom and Bed 3 as shown, with built-in Robe and 870mm hinged door.

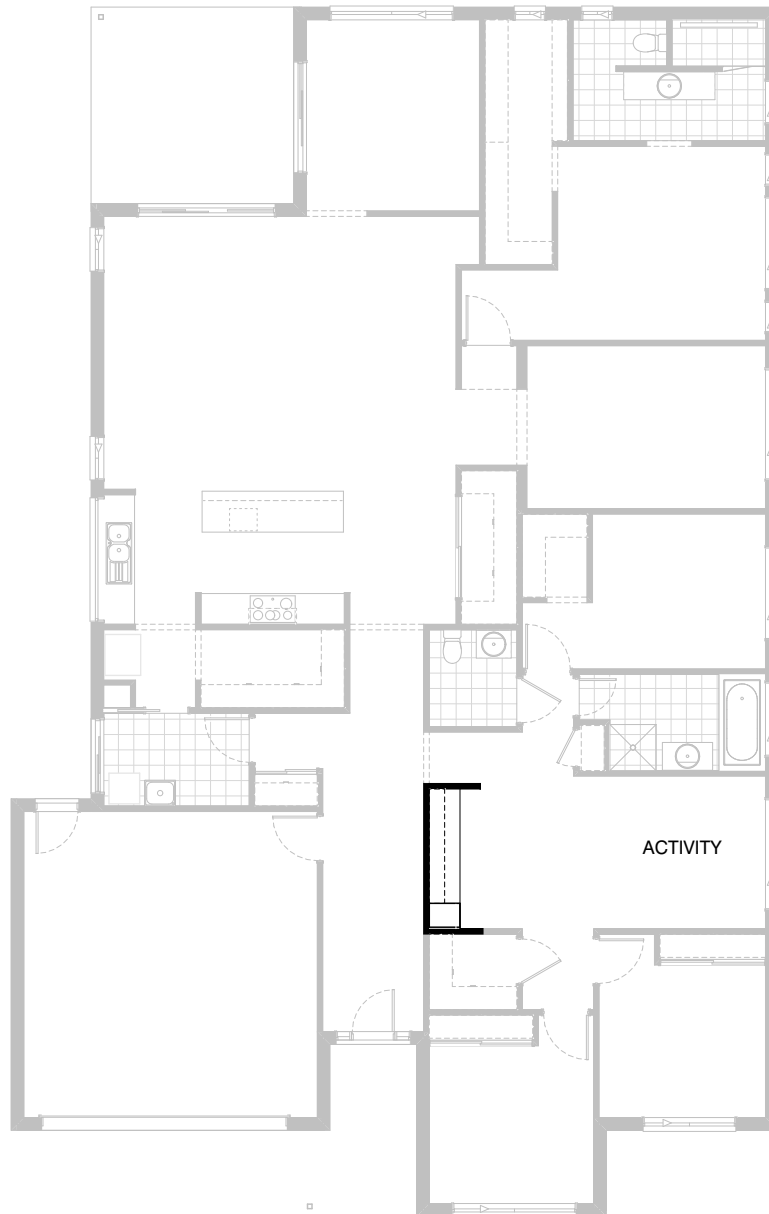
Provide 1200mm x 1810 aluminium sliding window to new Bed 4 in lieu of standard.

Provide bulkhead opening to new Activity.


**2.5**

**4**

+study

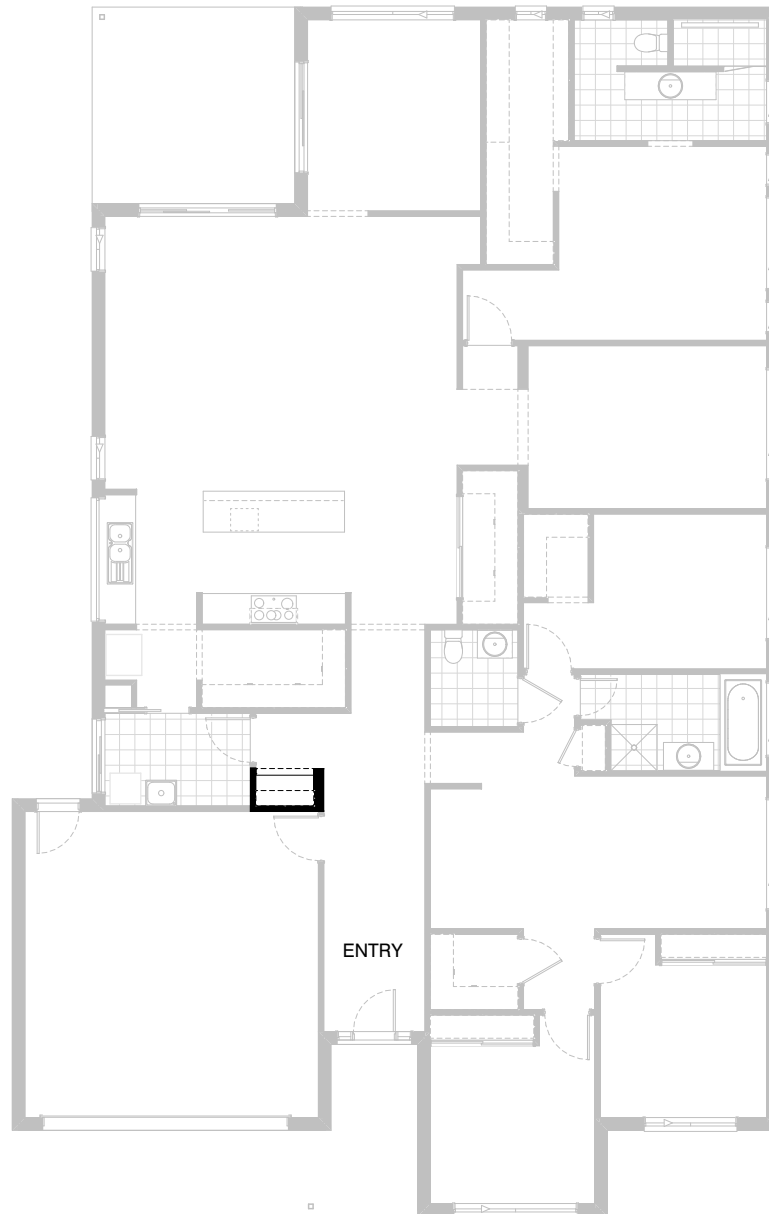

**2**


## Option Internal04

Provide built-in joinery option to Study Nook, including:  
 600mm deep 32mm thick laminate benchtop,  
 1No. 450mm drawer unit under desk,  
 1No. 450mm full height laminate cupboard,  
 2No. 300mm deep 60mm thick open shelves over.

**Note:**  
 Option not available with option External02.





## Option Internal05

Provide built-in joinery option to Entry in lieu of Linen cupboard, including:  
 600mm deep 32mm thick laminate benchtop,  
 1No. 1000mm tv drawer unit,  
 2No. 300mm deep 60mm thick open shelves over.  
 Provide 180mm nib wall with bulkhead over.

**Note:**

Option not available with option Laundry02, External02.

**2.5****4**  
+study**2**

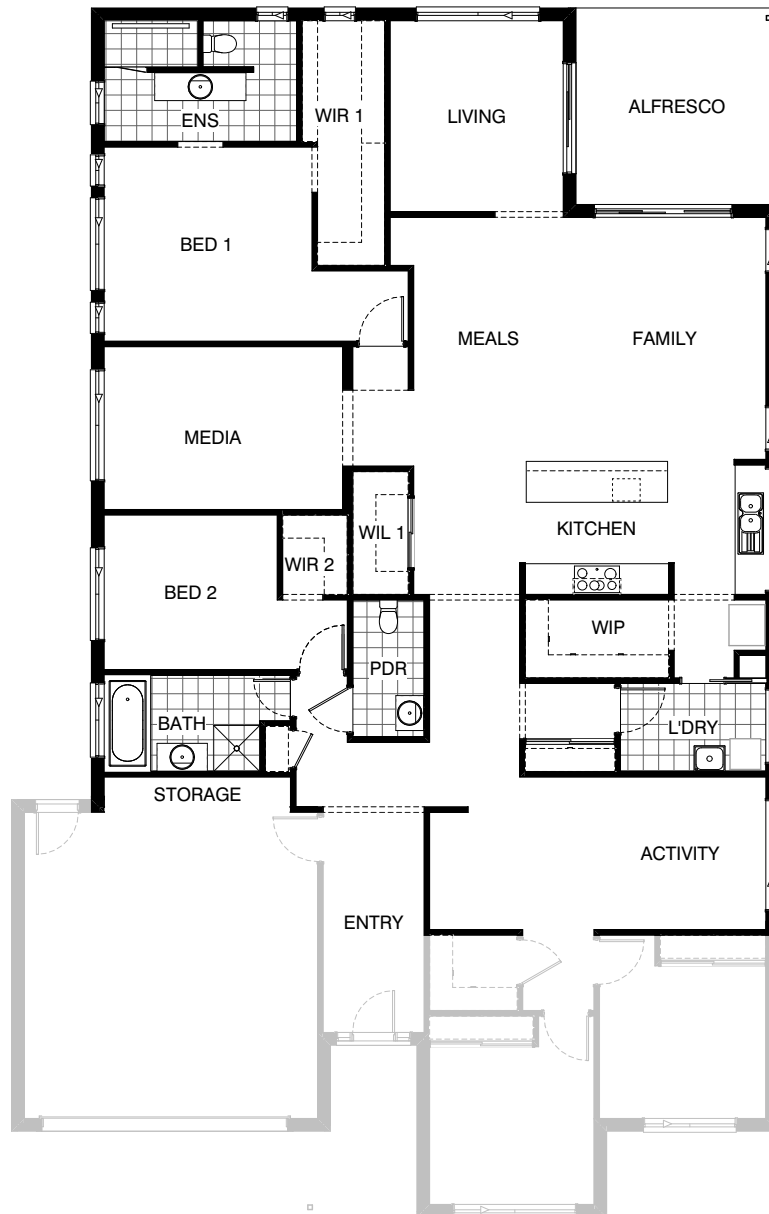
### Option External01

Provide corner sliding door option.  
Remove 2110mm x 2690mm and 2110mm x 2170mm  
aluminium sliding doors and replace with  
2107mm x 2410mm x 3610mm aluminium corner sliding door.  
Provide 2No. 89mm x 89mm steel support posts with steel  
beam to Engineer's design.


**2.5**

**4**

+study


**2**


## Option External02

Provide floor plan option which mirrors the rear of the home as shown.

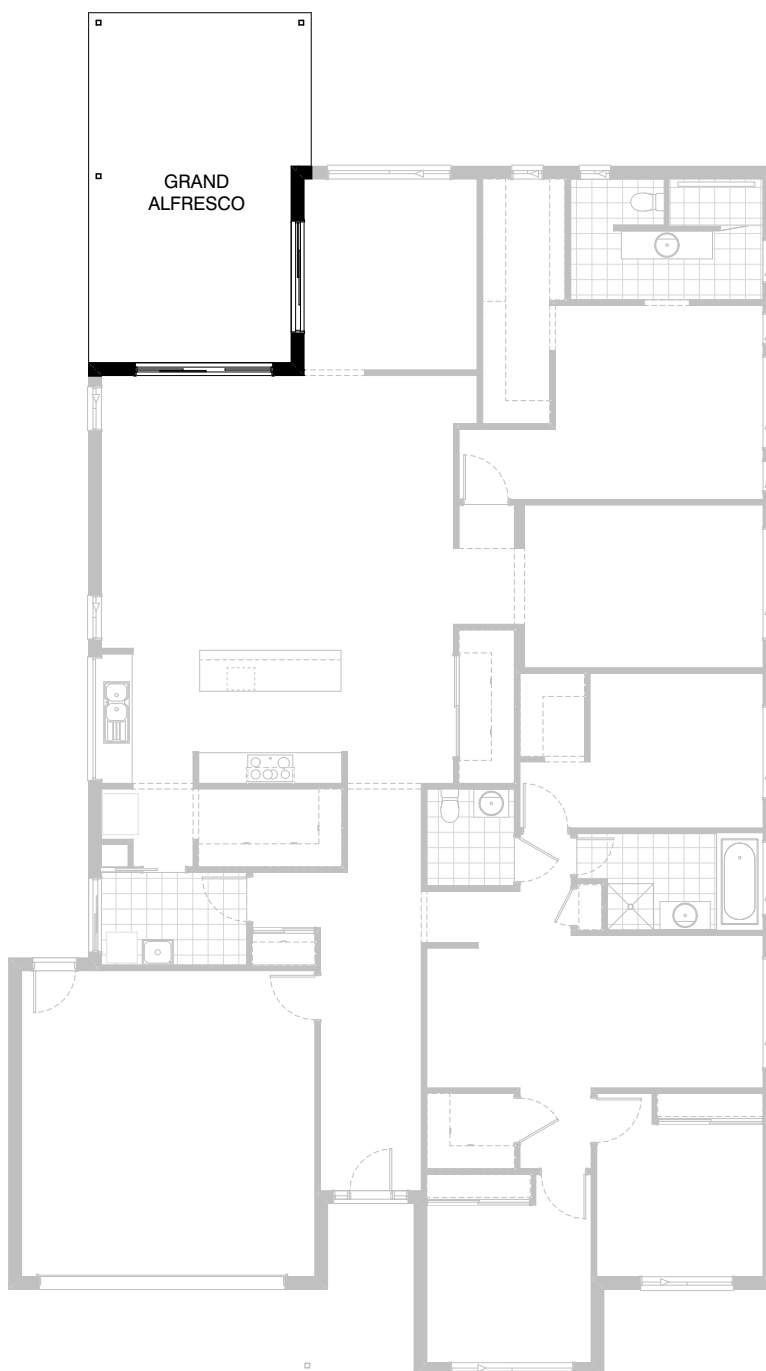
Note:  
 Option not available with options  
 Laundry02, Internal04, Internal05.


**4**

**2.5**

**4**

+study


**2**


### Option External03

Provide Grand Alfresco option, including:  
 2No. additional timber posts,  
 additional structural concrete slab,  
 additional tiled roof over.  
 Option adds 3.0m to the length of the home.  
 Option adds 13.05m<sup>2</sup> to the total floor area.