

FLOORPLAN OPTIONS

We personalise our floorplans. Talk to us about our huge range of ready-to-go design options.

Facades available:

Ashley, Atherton, Camden, Holton
Kelsey

Overall home width 10.91m

Overall home length 23.39m

Residence	159.3m ²	17.1sq
Garage	36.3m ²	3.9sq
Porch	3.1m ²	0.3sq
Alfresco	10.1m ²	1.1sq
Total	208.7m²	22.5sq

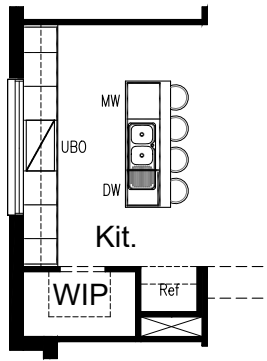
Listed details based on Ashley facade floorplan (illustrated)

*Copyright conditions. All photos and illustrations are representative only. Floor plans and specifications may be varied by Burbank without notice, the dimensions are diagrammatic only and a Building Contract with final drawings will display correct dimensions and detail. All designs are the property of Burbank and must not be used, reproduced, copied or varied, wholly or in part without written permission from an authorised Burbank representative. Copyright Burbank Australia (NSW) Pty Ltd. ABN 88 610 822 770. NSW BL 295627C ACT BL 2016566.

Call 13 BURBANK
Visit burbank.com.au

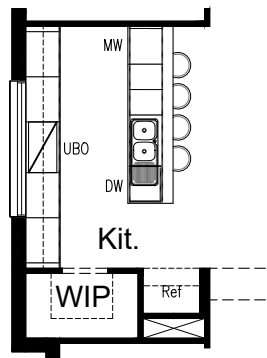
OPTION K-1

Provide Kitchen upgrade option including:
900mm open shelf over refrigerator space,
1No. microwave provision in lieu of 700mm base cupboard.
Island bench top decrease by 68mm to accommodate.
Kitchen cabinetry to cooker bench remains unchanged.



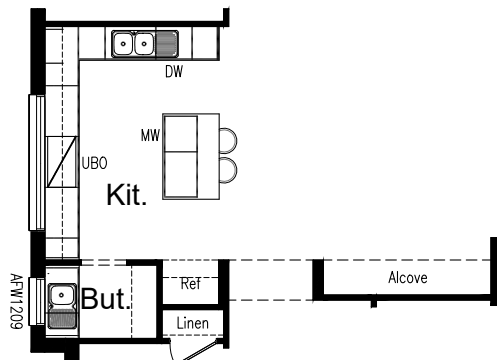
OPTION K-2

Provide Galley-style Kitchen upgrade option including:
900mm under bench oven,
900mm electric cooktop,
900mm retractable rangehood,
450mm drawer unit,
dishwasher provision,
microwave provision with pot drawer,
1No. 900mm open shelf over refrigerator space,
1No. 900mm base cupboard,
4No. 800mm base cupboards,
1No. 450mm base cupboard,
4No. 800mm overhead cupboards,
additional bench top and tiled splashback to suit.



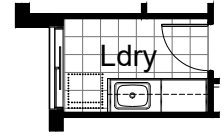
OPTION K-3

Provide L-shaped Kitchen upgrade option with Butler's Pantry in lieu of Walk-in Pantry.
Kitchen includes:
900mm under bench oven,
900mm electric cooktop,
900mm retractable rangehood,
450mm drawer unit,
dishwasher provision,
microwave provision with pot drawer,
1No. 900mm open shelf over refrigerator space,
3No. 900mm base cupboards,
1No. 900mm blind corner cupboard with 450mm door,
1No. 800mm base cupboard,
1No. 450mm base cupboard,
1No. 350mm base cupboard,
2No. 900mm overhead cupboards,
1No. 600mm overhead open shelf unit,
1No. 400mm overhead cupboard,
1No. 350mm overhead cupboard,
additional bench top and tiled splashback to suit.
Butler's includes:
1No. 800mm base cupboard,
1No. 400mm base cupboard,
single bowl sink,
additional AFW1209 fixed window,
additional bench top and tiled splashback to suit.
Linen closet with 820mm hinged door and 4No. 450mm shelves added to Laundry in lieu of Void.
Alcove to Family also increases by 150mm so the bulkhead still lines up.



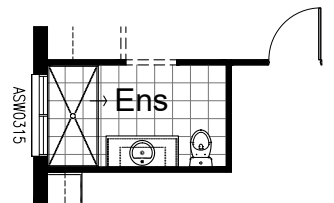
OPTION LD-1

Provide Laundry upgrade option including laminate base cupboards and stainless steel inset trough including:
1No. 900mm base cupboard,
1No. 800mm base cupboard,
1No. 900mm overhead cupboard,
1No. 800mm overhead cupboard,
additional bench top and tiled splashback to suit.



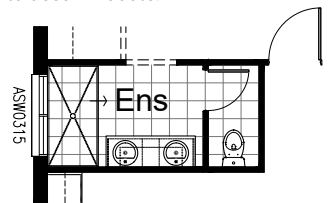
OPTION ENS-1

Provide Ensuite upgrade option with rearranged layout including 1810x900mm wall-to-wall tiled shower base and relocated WC.
Option also provides AFW0318 fixed window above shower in lieu of standard.



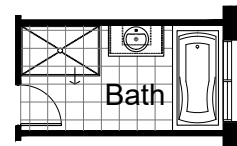
OPTION ENS-2

Provide Ensuite upgrade option with rearranged layout including 1810x900mm wall-to-wall tiled shower base and enclosed WC with 720mm hinged door.
Option also provides AFW0315 fixed window above shower in lieu of standard.
Option increases Ensuite by 600mm to accommodate.



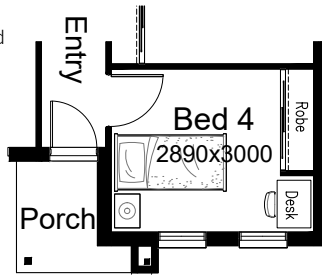
OPTION IP1-1

Provide Bathroom upgrade option including 1400x900mm tiled shower base in lieu of standard.
Option also removes Alcove to Entry passage to accommodate.



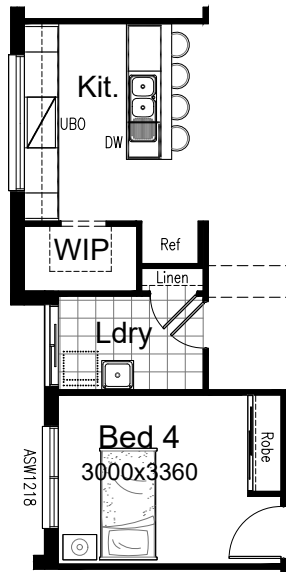
OPTION IP1-2

Provide Bedroom 4 in lieu of Living to the front of the home, providing additional 920mm hinged door and stud and plaster wall in lieu of bulkhead opening, and built-in Robe with sliding doors and 1No. 450mm shelf with hanging rail.



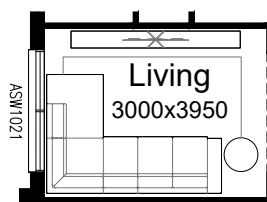
OPTION IP1-3

Provide Bedroom 4 in lieu of Office, Kitchen layout changes to accommodate. Remove Coats closet and Linen closet to Passage and provide 920mm hinged door and built-in Robe with sliding doors and 1No. 450mm shelf with hanging rail. New Galley-style Kitchen includes: 900mm under bench oven, 900mm electric cooktop, 900mm retractable rangehood, 450mm drawer unit, dishwasher provision, 1No. 900mm base cupboard, 3No. 800mm base cupboards, 1No. 450mm base cupboard, 2No. 800mm overhead cupboards, 2No. 450mm overhead cupboards, bench top and tiled splashback to suit. Option also includes additional Linen closet to Laundry in lieu of Void with 820mm hinged door and 4No. 300mm shelves. Provide ASW1218 sliding window to new Bed 4 in lieu of standard. Note: Options K1, K2 and K3 not to be used in conjunction with this option.



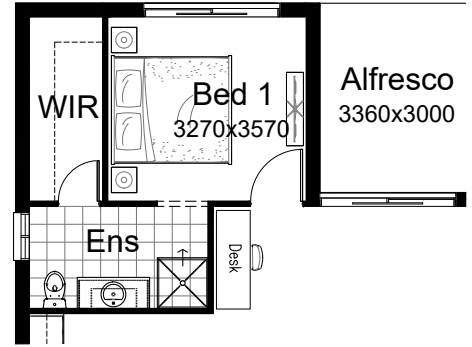
OPTION IP1-4

Provide Living in lieu of Bed 4 in conjunction with option IP3. Remove built-in Robe, 920mm hinged door and stud and plaster wall, and provide bulkhead over. Provide ASW1021 sliding window in lieu of ASW1218 sliding window.



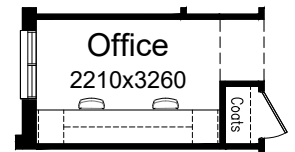
OPTION IP1-5

Provide relocated sliding door to Bed 1, including relocated bulkhead opening to Ensuite and provide 720mm hinged door to WIR in lieu of bulkhead opening. Remove ASW0524 sliding window.



OPTION IP1-6

Provide built-in joinery to Office including: 1No. 600mm deep 32mm thick laminate desk, 2No. 450mm drawer units below desk, 2No. 450mm open shelf units, 2No. 300mm deep 60mm thick open shelves over.



OPTION IP1-7

Provide built-in joinery upgrade option to Family including: 1No. 450mm deep 32mm thick laminate bench top, 1No. 1000mm T.V cabinet cupboard, 2No. 900mm T.V cabinet cupboards, 2No. 450mm open shelf units, 2No. 300mm deep 60mm thick open shelves over.



OPTION IP1-8

Provide built-in joinery upgrade option to Family including: 1No. 600mm deep 32mm thick laminate bench top, 1No. 1000mm T.V cabinet cupboard, 2No. 900mm T.V cabinet cupboards, 2No. 450mm open shelf units, 2No. 300mm deep 60mm thick open shelves over. Note: option only to be used in conjunction with option K-3

