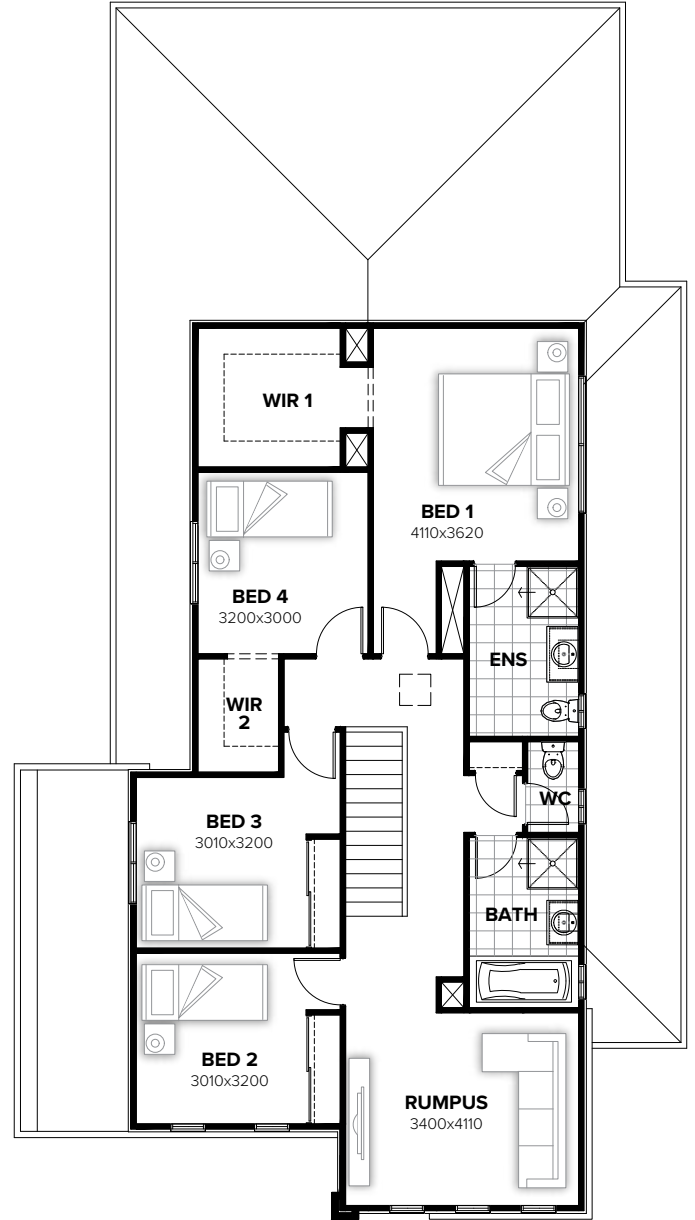


GROUND FLOOR



FIRST FLOOR

FLOORPLAN OPTIONS

We personalise our floorplans. Talk to us about our huge range of ready-to-go design options or simply visit www.burbank.com.au/south-australia for more details.

Facades available:

Cambridge, Coventry, Halifax, Yorke
Northampton, Oxford, Westminster

Overall home width 11.27m

Overall home length 20.87m

Residence	242.9m ²	26.2sq
Garage	37.2m ²	4.0sq
Porch	3.1m ²	0.3sq
Alfresco	16.5m ²	1.8sq
Total	299.7m²	32.3sq

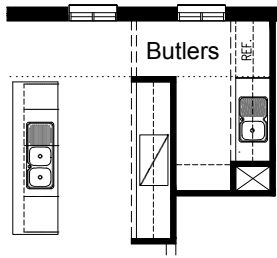
Listed details based on Coventry facade floorplan (illustrated)

*Copyright conditions. All photos and illustrations are representative only. Floor plans and specifications may be varied by Burbank without notice, the dimensions are diagrammatic only and a Building Contract with final drawings will display correct dimensions and detail. All designs are the property of Burbank and must not be used, reproduced, copied or varied, wholly or in part without written permission from an authorised Burbank representative. Copyright Burbank Australia (SA) Pty Ltd. ABN 96 165 533 406. BLD 266709.

Call 13 BURBANK
Visit burbank.com.au

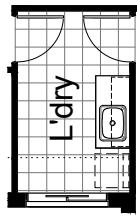
OPTION K1

Provide Butlers upgrade by extending WIP and deleting WIL.
Provide 2no. 700mm base cupboards, 2no. 700mm overhead cupboards & 1no. 900mm overhead cupboard above ref space.



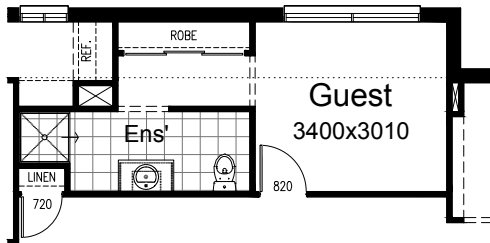
OPTION LD1

Provide Laundry upgrade including laminated inset trough,
1no. 800mm base cupboard, 1no. 400mm base cupboard, 1no. 800mm overhead cupboard, 1no. 400mm overhead cupboard with additional tiled splash back and benchtop to suit.



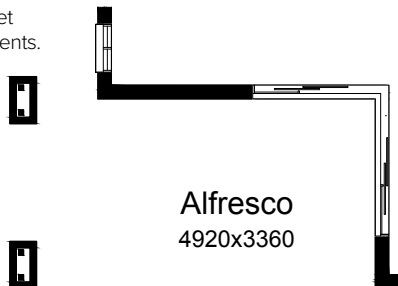
OPTION IP1

Provide Guest bedroom, Ensuite and Robe Option in lieu of standard Lounge and WIL. Provide additional 1no. 820mm flush panel hinged door, 1no. 900mm x 900mm tiled in shower base, 1no. toilet, 1no. 982mm wide vanity unit, hanging rail/shelf to Robe and 1no. 514mm x 2410mm aluminium sliding window in lieu of standard to Guest.



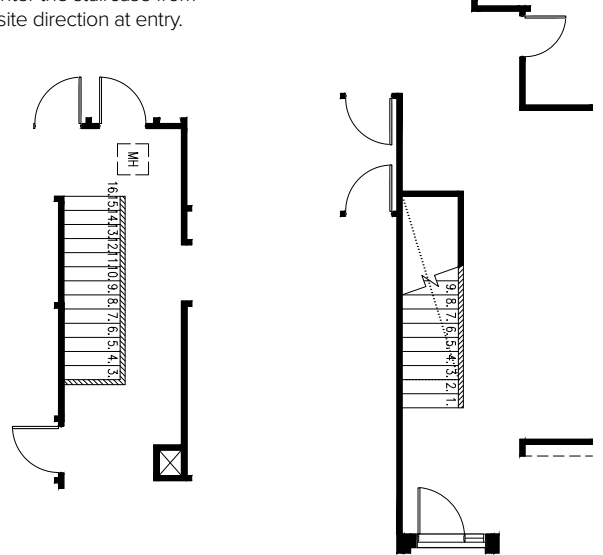
OPTION EP1

Provide Grand Alfresco option. Provide ACS D 2124-26 External Corner Sliding door to Family/Meals, 2 x 470x830 brick piers. Minimum site area 390m2 to meet 60% building coverage requirements.



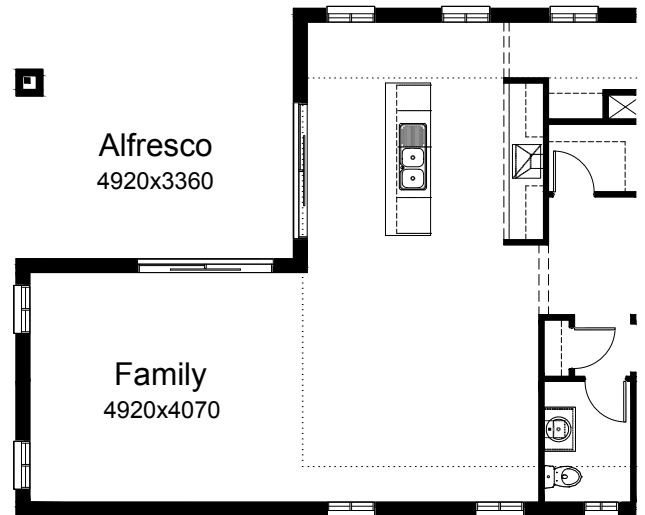
OPTION IP2

Provide Option to mirror staircase and enter the staircase from opposite direction at entry.



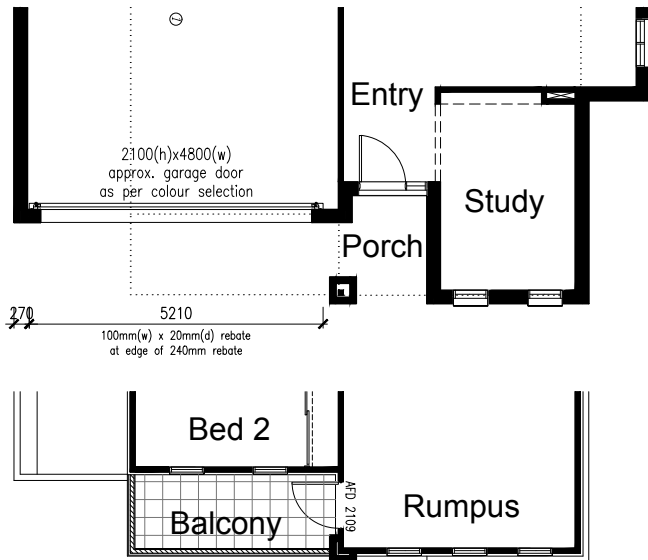
OPTION EP2

Alfresco flip Option.



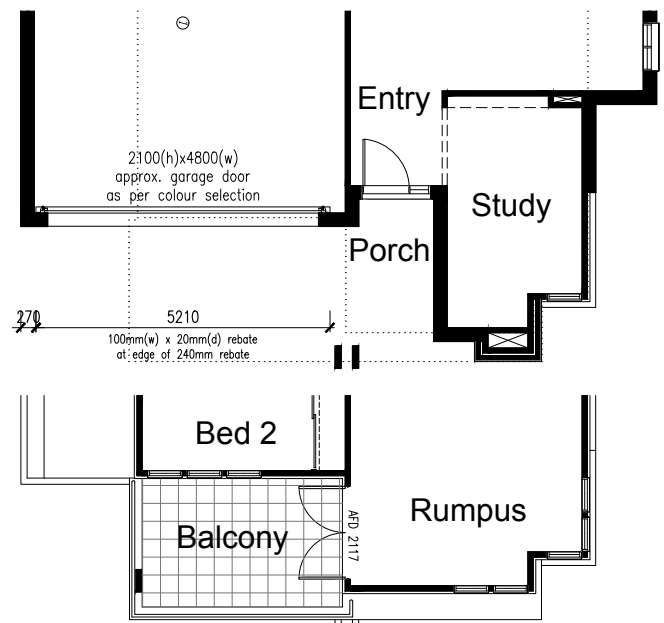
OPTION EP3

Provide Balcony option.
Provide AFD 2109 external door, ceramic tiled floor, timber framed wall balustrade with painted Scyon Stria cladding with 89x19 Axent trim over as handrail and painted Scyon Stria to internal lining.
(COVENTRY FACADE)



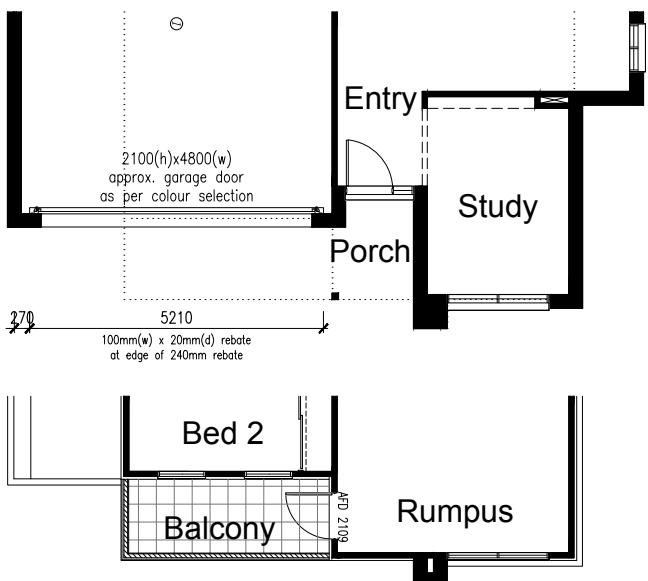
OPTION EP5

Provide Balcony option.
Provide AFD 2117 external door, ceramic tiled floor, stainless steel handrail, timber framed wall balustrade with rendered Harditex cladding, 400x110 post and rendered Harditex cladding to internal lining.
(HALIFAX FACADE)



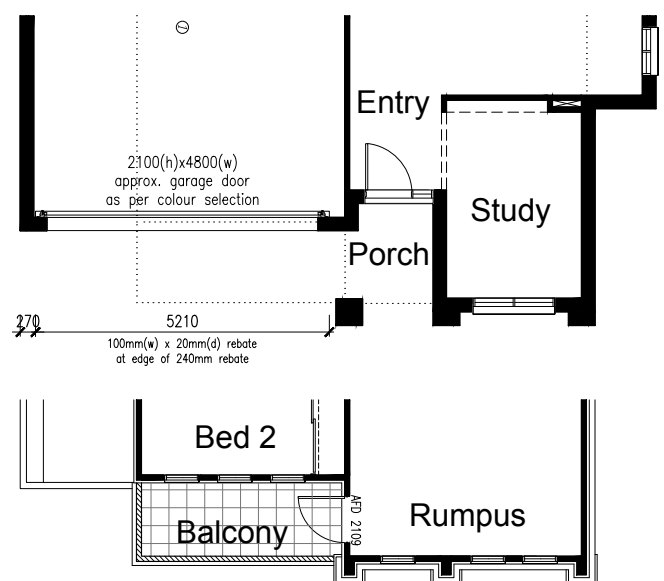
OPTION EP4

Provide Balcony option.
Provide AFD 2109 external door, ceramic tiled floor, timber framed wall balustrade with painted Scyon Linea, 89x19 Axent trim over as handrail, rendered Harditex cladding to internal lining and 112x112 painted timber post.
(YORKE FACADE)



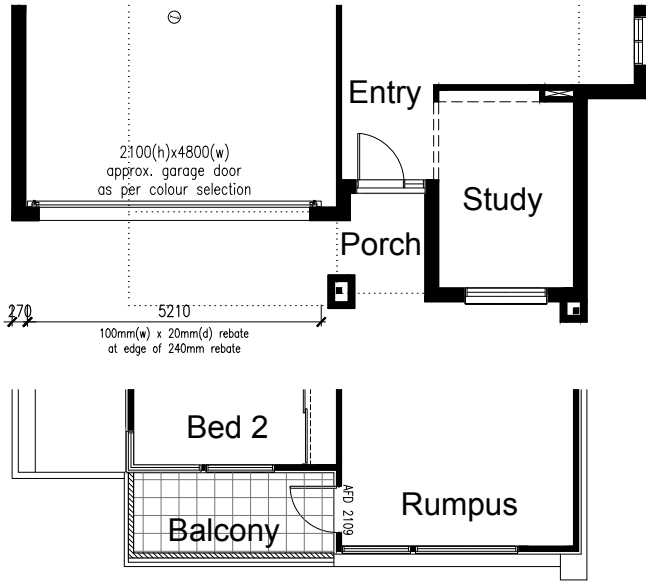
OPTION EP6

Provide Balcony option.
Provide AFD 2109 external door, ceramic tiled floor, timber framed wall balustrade with rendered EPS cladding, rendered Harditex cladding to internal lining and moulding type 2 as handrail.
(CAMBRIDGE FACADE)



OPTION EP7

Provide Balcony option.
Provide AFD 2109 external door, ceramic tiled floor,
1 No. AFW 1012 aluminium fixed window to Rumpus,
timber framed wall balustrade with rendered EPS cladding
and rendered Harditex cladding to internal lining.
(WESTMINSTER FACADE)



OPTION EP8

Provide Balcony option.
Provide AFD 2109 external door, ceramic tiled floor,
with stainless steel posts and stainless steel
horizontal rods as balustrades
(OXFORD FACADE)

