



FLOORPLAN OPTIONS

We personalise our floorplans. Talk to us about our huge range of ready-to-go design options.

Facades available:

Airlie, Contemporary, Kingston
Traditional

Overall home width 31.31m

Overall home length 14.87m

Residence	262.6m ²	28.3sq
Garage	39.1m ²	4.2sq
Porch	6.6m ²	0.7sq
Alfresco	16.7m ²	1.8sq
Total	325.0m²	35.0sq

Listed details based on Traditional facade floorplan (illustrated)

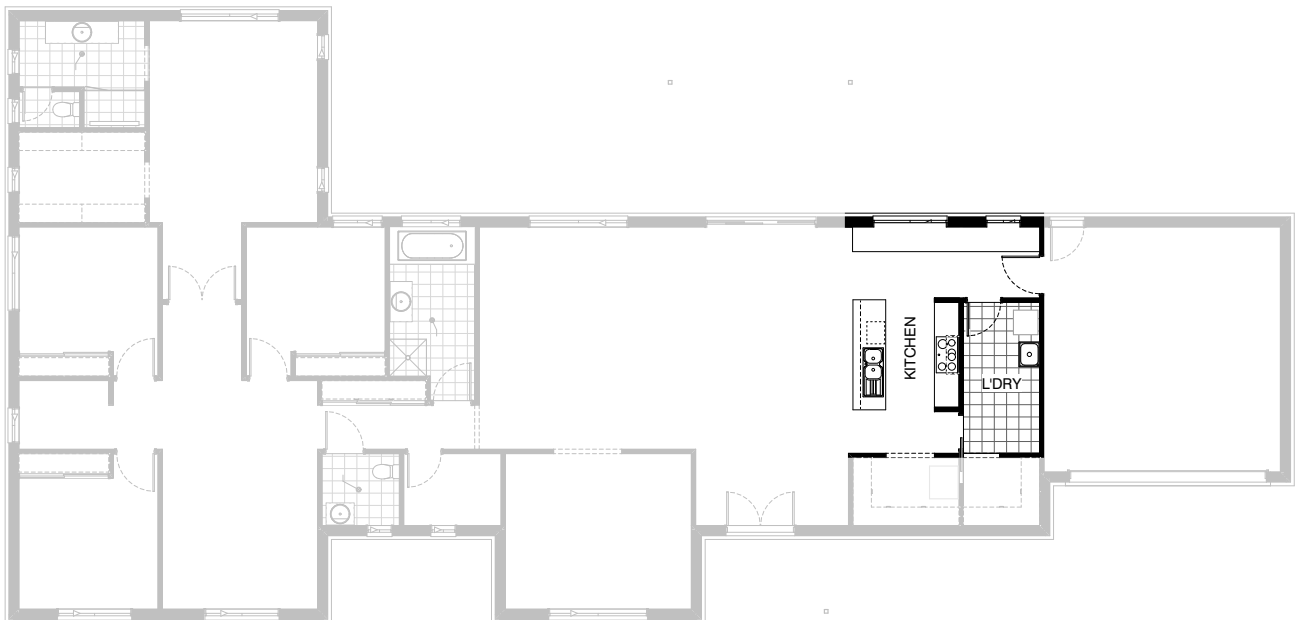
*Copyright conditions. All photos and illustrations are representative only. Floor plans and specifications may be varied by Burbank without notice, the dimensions are diagrammatic only and a Building Contract with final drawings will display correct dimensions and detail. All designs are the property of Burbank and must not be used, reproduced, copied or varied, wholly or in part without written permission from an authorised Burbank representative. Copyright Burbank Australia (QLD) Pty Ltd. ABN 77 103 014 615. QBCC 1046544.

Call 13 BURBANK
Visit burbank.com.au



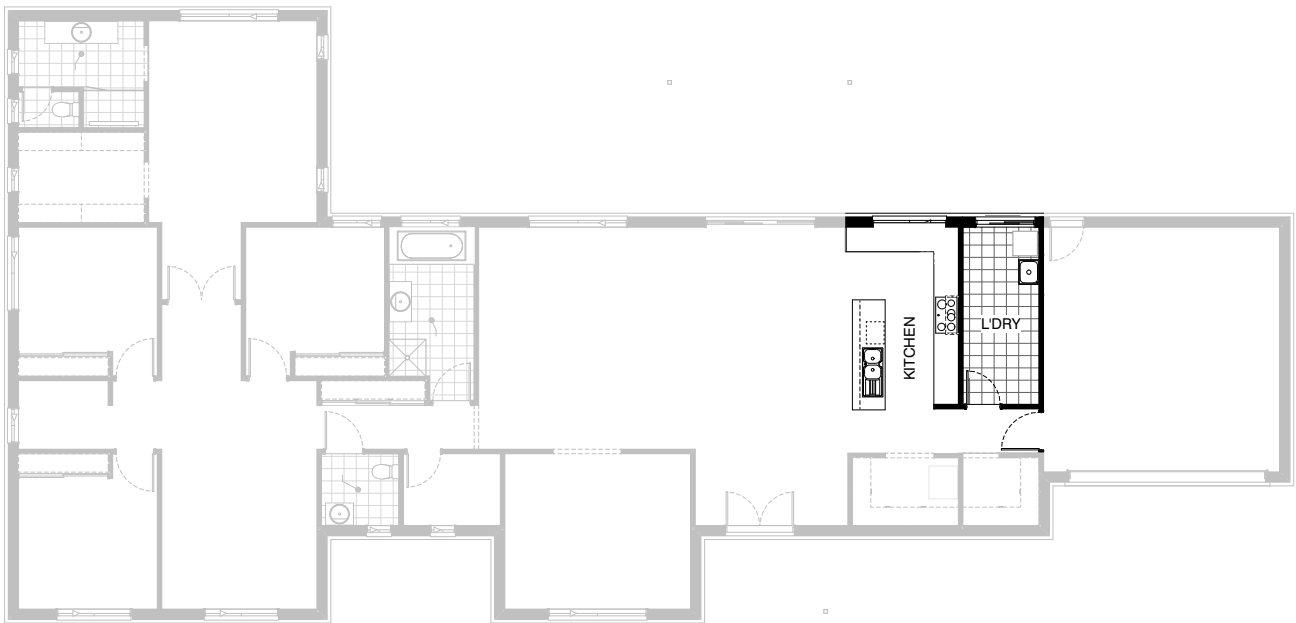
Option Kitchen01

Provide 2no. overhead cabinets to
Kitchen and 900mm wide retractable
rangehood



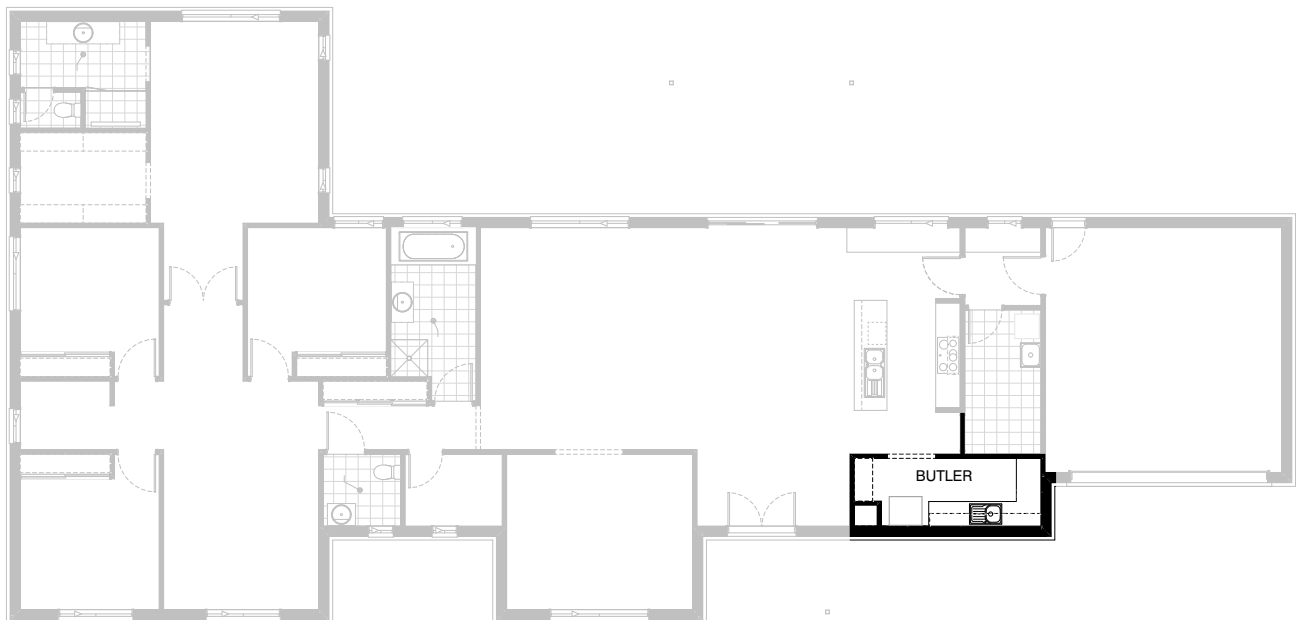
Option Kitchen02

Delete Mud room and provide additional cabinets to Kitchen:
2no. additional 900mm base cabinets
benchtop and tiled splashback to suit.
Laundry partition re-aligned.
Laundry floor area increased by 0.56 sqm
920mm hinged door and partition to Mud room
deleted.



Option Kitchen03

Provide L shaped Kitchen upgrade by deleting Mud room and relocating Laundry and Garage access door including:
1no. additional 900mm wide base cabinet
1no. 900x900mm corner cabinet.
benchtop and tiled splashback to suit.
To Laundry provide ASD2115 and delete window ASW1209.
Laundry floor area increased by 1.68 sqm
1no. cavity sliding door & 1no. 920mm hinged door deleted



Option Kitchen04

Provide Butler's Pantry including:
2no. 900mm wide base cabinets
1no. 900x900mm corner base cabinet
1no. 700mm wide base cabinet
3no. 900mm wide overhead cabinets
Single bowl sink and drainer
benchtop and tiled splashback to suit.
Void beside fridge space and reduction in shelving.
Cavity sliding door deleted.



4



2.5

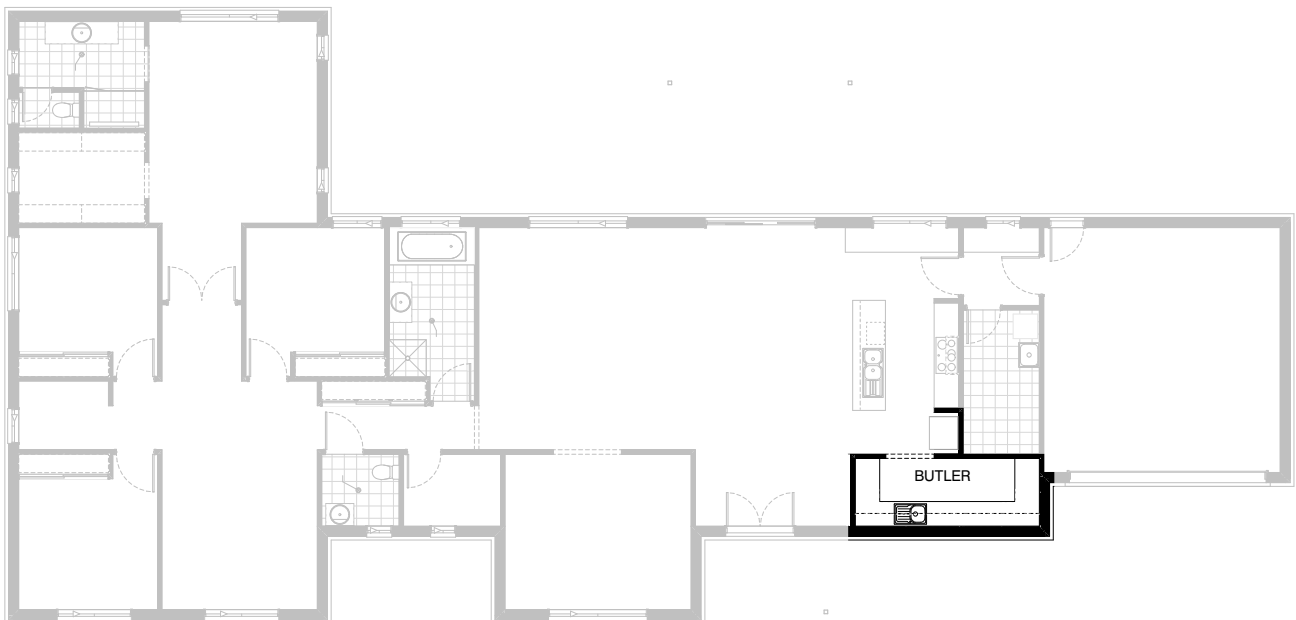


3

+ study



2



Option Kitchen05

Provide Butler's Pantry including:
3no. 900mm wide base cabinets
2no. 900x900mm corner base cabinets
2no. 700mm wide base cabinets
5no. 900mm wide overhead cabinets
Single bowl sink and drainer
Benchtop and tiled splashback to suit.
Refrigerator relocated to Kitchen.
Cavity sliding door deleted.
Relocate elevation A wall 60mm to suit cabinetry dimensions.



Option Internal01

Provide Butler's Pantry, Mud room and Laundry option:
Laundry relocated to external wall with ASD2115. ASW1209
deleted
Mud room access door relocated
Mud room area increased by 3.54 sqm

Butler's Pantry with:
2no. 800mm wide base cabinets
2no 800mm wide overhead cabinets Single sink and drainer,
Benchtop and tiled splashback to suit.
Additional stud wall to fridge space and reduction in shelving

Butler's Pantry with:
3no. 600mm wide base cabinets
Benchtop and tiled splashback to suit.
Also suites Laundry01 option.



Option Internal02

Provide Laundry and Mud room option with laundry relocated to external wall and internal Mud room. Mud room access door relocated with additional 600mm nib wall and shelving. Provide ASD2115 in lieu ASW1209. Cavity sliding door deleted. Relocate fridge space to Kitchen in lieu of WIP.

Also suites option Laundry01.



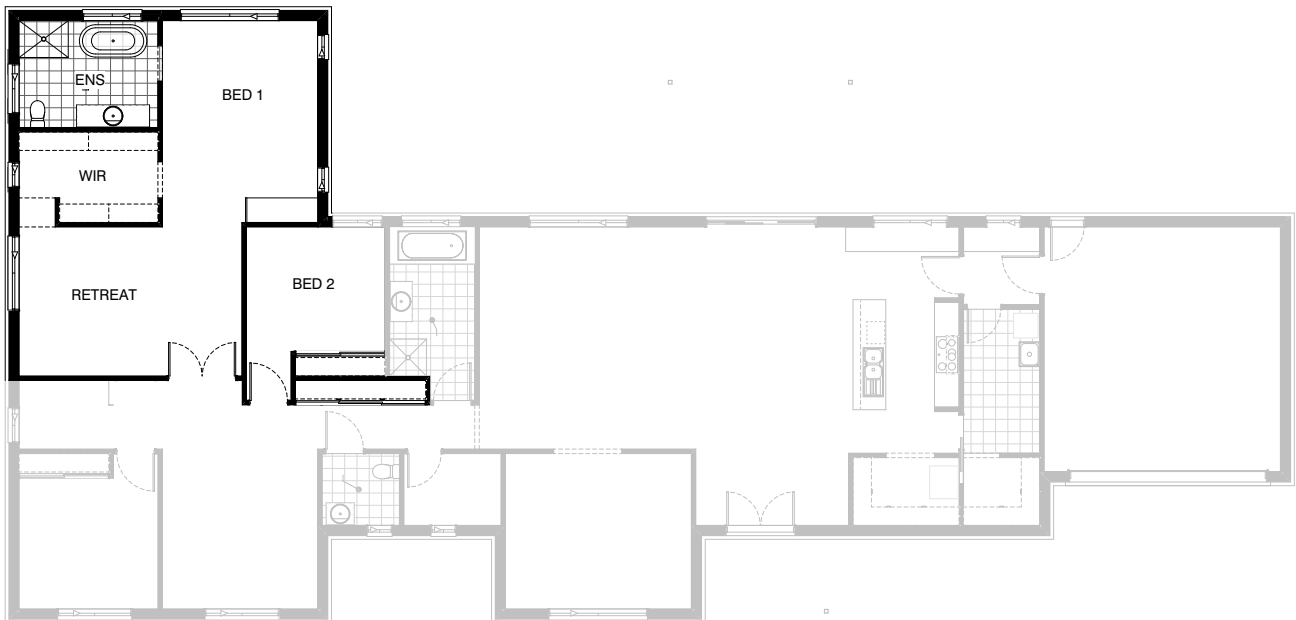
Option Internal03

Provide Bed 5 in lieu of Living 2 with additional linen cupboard, 920mm door and robe to Bed 5.



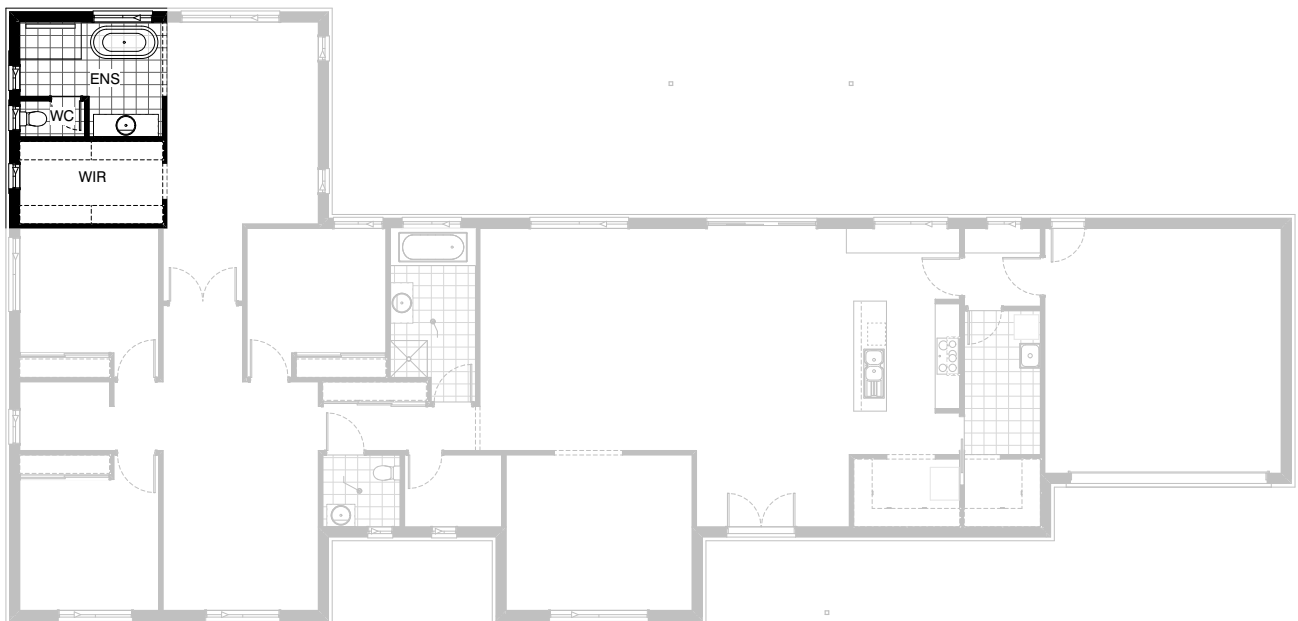
Option Internal04

Delete existing Study and robes to beds 3 and 4 and provide WIR to both bedrooms. Delete ASW 2057-850.



Option Internal05

Remove Bed 3 and replan Robe and
Ensuite to provide Retreat to bed 1.
Ensuite to have:
1200x900 tiled shower base
1700mm long freestanding bath
1782mm long vanity with single
vanity basin.
Includes relocated double doors to
Retreat, relocated door to Bed 2 and
increased linen cupboard
Add 1760x600 study desk with
33mm side panel.
Delete 2no. ASW1206
Add ASW1215 and ASW0512



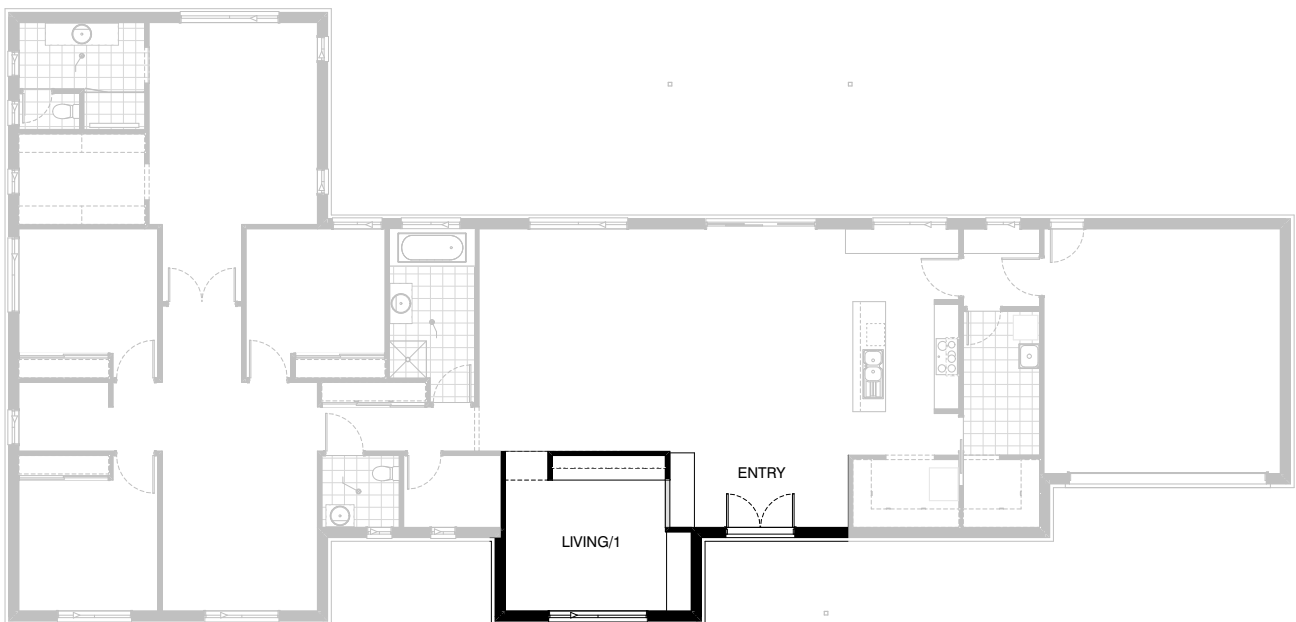
Option Internal06

Provide Ensuite upgrade and WIR
redesign including:
1700mm long freestanding bath
900x1500mm tiled shower base
1582mm long vanity with single basin
Enclosed WC
Add ASW1215
Not available with option Internal05



Option Internal07

Remove Bed 3 and replan Robe and Ensuite to provide Dresser including:
1500x900mm tiled shower base
1700mm long freestanding bath
1782mm long vanity with single basin
Enclosed WC
600mm deep 32mm laminate benchtop to Dresser
Includes relocated double doors to Bed 1, relocated door to Bed 2 and increased linen cupboard
Delete 2no. ASW1206, 1no. ASW2006, and 1no. ASW 2018
Add 1no. ASW1218, 1no. ASW0515, and ASW2009



Option Internal08

Provide Living and Entry room upgrade

Entry joinery including:

2no. 700mm base cabinets

1no. 350mm base cabinets

1175mm wide by 1105mm high wall cutout between Living and Entry with benchtop within cutout and over base cabinets

Living joinery including:

2no. 900mm base cabinets

32mm laminate benchtop to suit

Living room entertaining unit including:

2no. 900mm TV cabinet units

2no. 450mm TV cabinet units

2no. 900mm overhead cabinets

2no. 450mm overhead cabinets

32mm laminate benchtop to suit



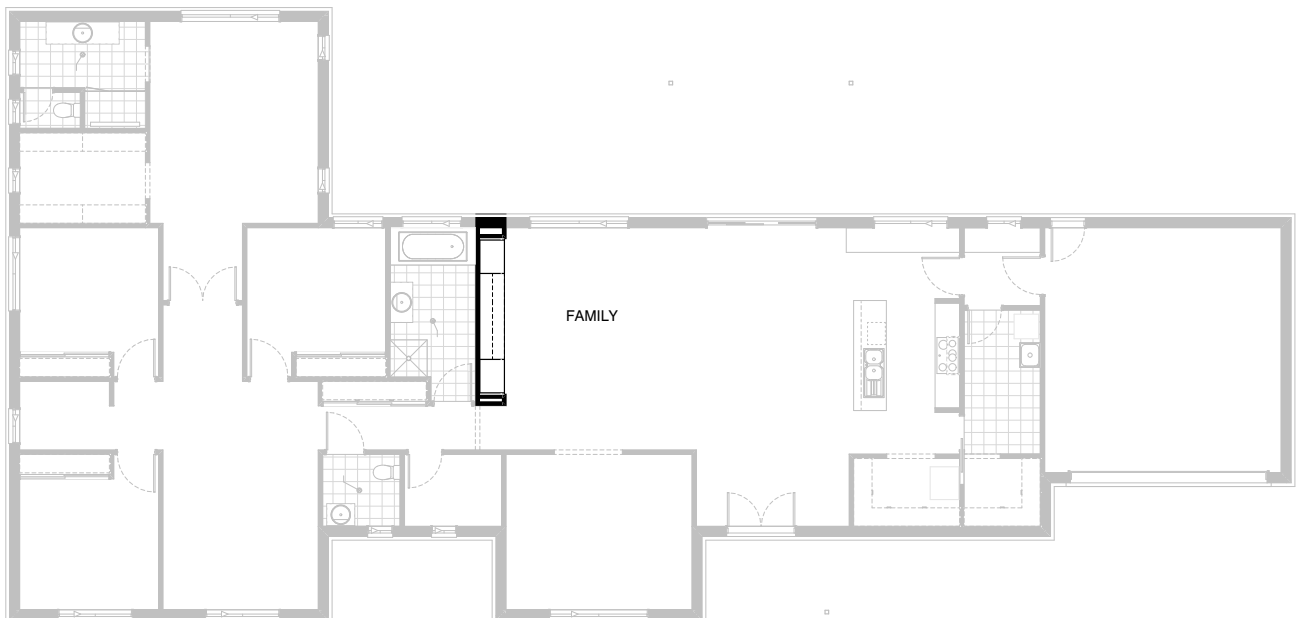
Option Internal09

Provide fitted desk and shelving to study:
32mm x 600mm deep laminated desk top
1no. 450mm drawer unit below desk
2no. 60mm thick x 300mm deep
laminate shelves.



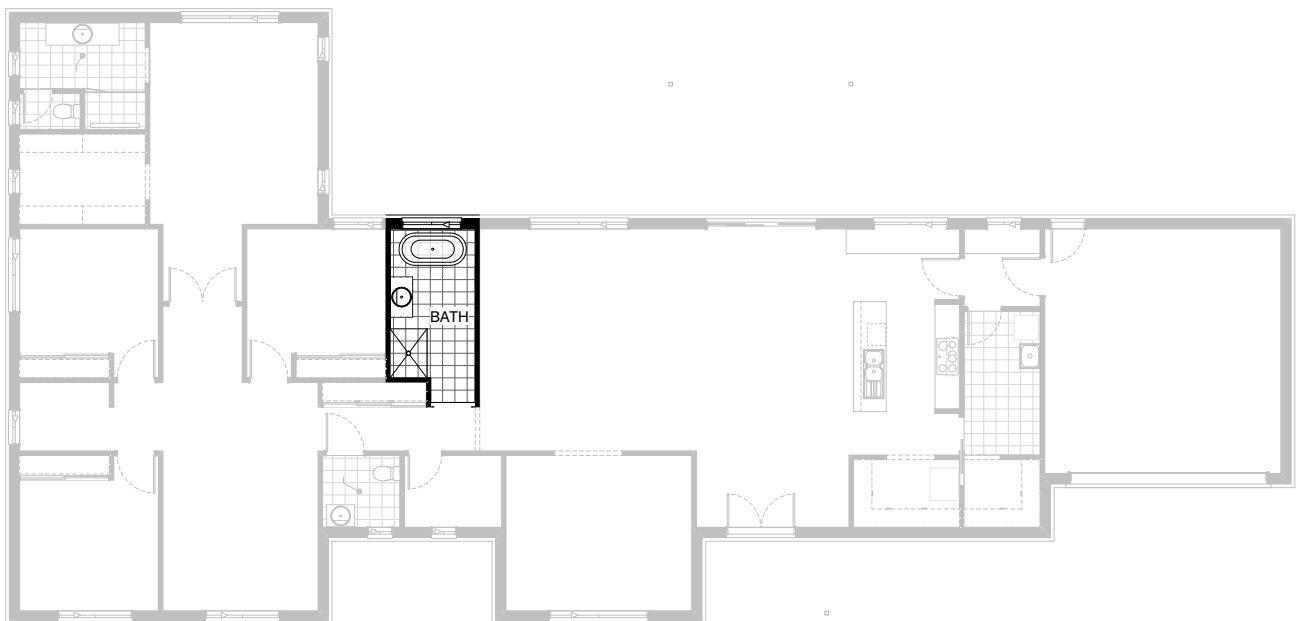
Option Internal10

Provide 2 runs of 4No. 450mm deep
shelves to Store



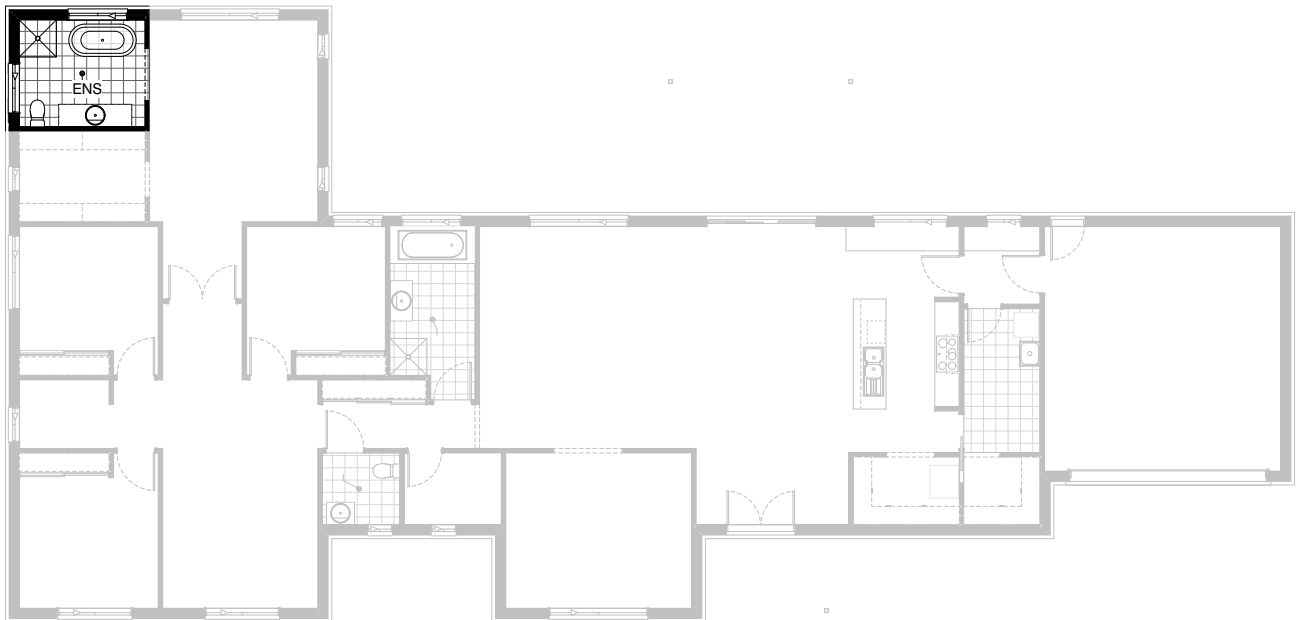
Option Internal11

Provide joinery to Family room with additional studwork piers nom 265mm wide x 650mm deep
2no. full height cabinets 800mm wide
3no. 700mm wide drawer TV cabinets with 32mm laminate benchtop
3no. lift up overhead cabinets



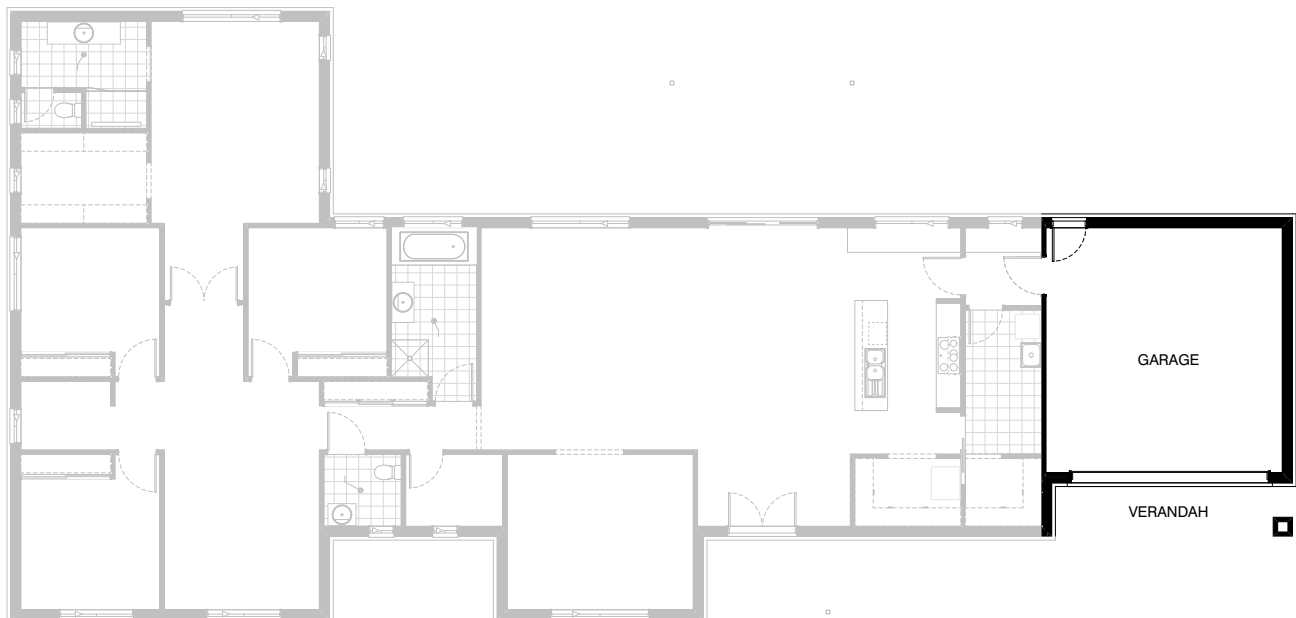
Option Internal12

Provide Bathroom upgrade with 1200x900mm tiled shower base, shower screen to suit, 982mm wide vanity unit with single basin and 1700mm long freestanding bath.



Option Ensuite01

Provide Ensuite upgrade with 900x900mm
tiled shower base, freestanding bath
1700mm long and open WC suite.
2no. ASW1206 deleted.
1no. ASW0512 added
1no. ASW1215 added



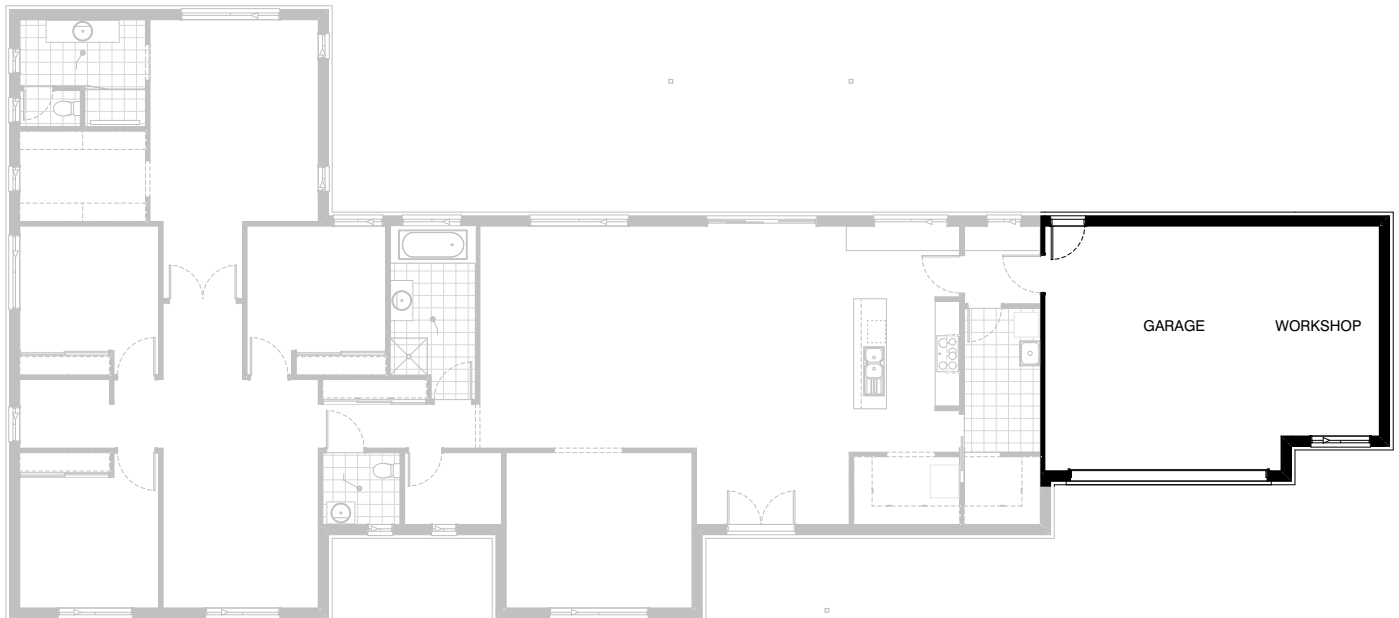
Option Garage01

Provide additional brick freestanding pier
470x470mm and extended roof to garage.
Adds 7.75 sqm to roof area and external
ceiling area.



Option Garage02

Provide extension to Garage to create additional Storage area.
Increases area by 9.1m².
Increases width by 1680mm.



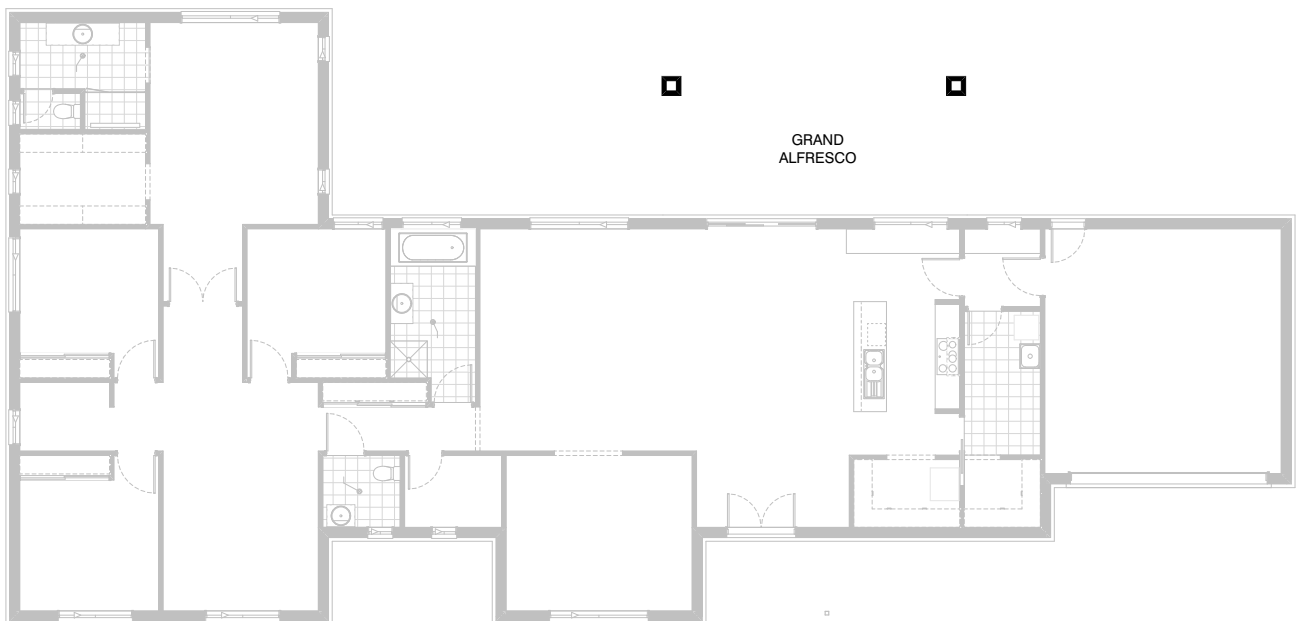
Option Garage03

Provide extension to Garage to create
Workshop area including additional 1450mm
wide window to suit. Window height to match
facade windows.
Increases area by 13.51m².
Increases width by 2400mm.



Option Garage04

Provide triple car Garage including additional panel lift door to front. Increases Garage area by 23.3m². Increases width by 3600mm.



Option External01

Provide Grand Alfresco with 2no.
470x470mm brick piers and pitched
tiled roof to suit. Area increased to
include kitchen window.
Area increased by 9.18sqm



Option Laundry01

Provide Laundry upgrade including:
2no. 900mm wide base cabinets
1no. 800mm wide base cabinet
2no. 900mm wide overhead cabinets
1no. 800mm wide overhead cabinet
32mm laminate bench with stainless
steel inset trough and additional tiled
splashback to suit

Also suits Options Internal01 and
Internal02



Option Laundry02

Provide Laundry upgrade including:
1no. full height cabinet 600mm wide
3no. 700mm base cabinets
3no. 700mm wide overhead cabinets
32mm laminate bench with stainless
steel inset trough
Tiled splashback to suit

Only available with Option Kitchen02



Option Laundry03

Provide Laundry upgrade including:
1no. full height cabinet 600mm wide
3no. 900mm base cabinets
3no. 900mm wide overhead cabinets
32mm laminate bench with stainless
steel inset trough
Tiled splashback to suit

Only available with Option Kitchen03