

BELAIR

aberdeen façade



harrogate façade



kent façade

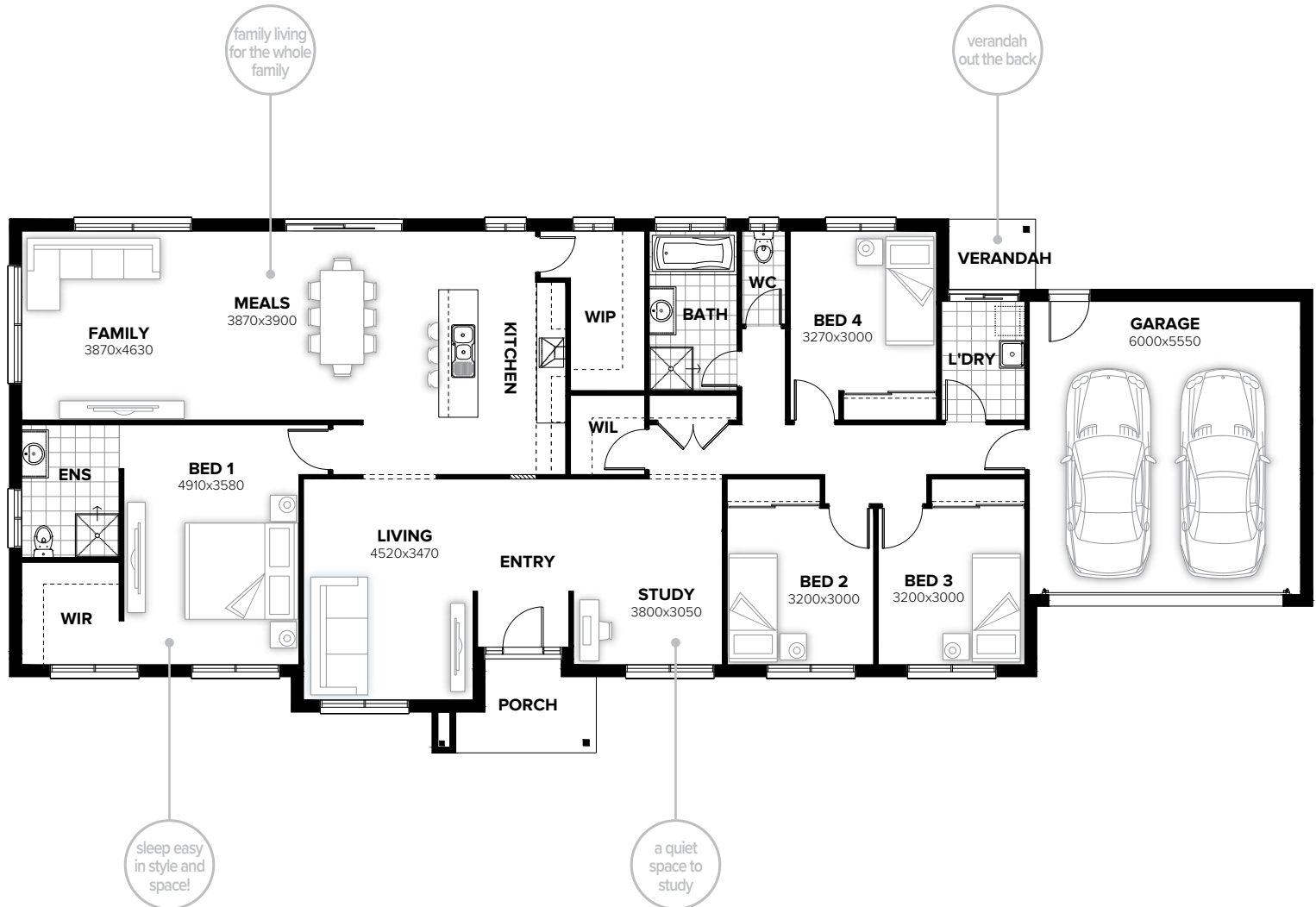


sheffield façade



BELAIR 240

4 2 0 2



FLOORPLAN OPTIONS

Want to put a personal touch on your home? Speak to your New Home Consultant about the exciting range of ready-to-go design options for this floorplan.

Popular design options include:

- Ensuite upgrade
- Laundry upgrade
- Kitchen options
- Triple garage option
- Storage or workshop to garage option
- Gas fireplace to family room

residence	194.97sqm	20.99sq
porch	5.02sqm	0.54sq
garage	37.46sqm	4.03sq
verandah	2.59sqm	0.28sq
total	240.04sqm	25.84sq

Listed details based on Sheffield façade floorplan (illustrated)

Call 13 BURBANK Visit burbank.com.au

Burbank 
#noplacelikehome

*Copyright conditions. All photos and illustrations are representative only. Floor plans and specifications may be varied by Burbank without notice, the dimensions are diagrammatic only and a Building Contract with final drawings will display correct dimensions and detail. All designs are the property of Burbank and must not be used, reproduced, copied or varied, wholly or in part without written permission from an authorised Burbank representative. Copyright Burbank Australia (SA) Pty Ltd. ABN 96 165 533 406. BLD 266709.

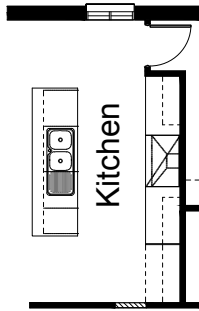
FLOORPLAN OPTIONS

BELAIR 240



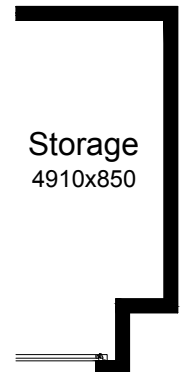
OPTION K1

Provide Kitchen upgrade with 1no. laminated open shelf above refrigerator space, 2no. 600mm base cupboards, 2no. 400mm base cupboards, 1no. 900mm upright oven with canopy range hood over, 2no. 800mm overhead cupboards, 1no. 450mm drawers, 1no. laminated DW provision, 1no. 800mm base cupboard and 1no. laminated MW provision. Reduce WIP opening width by 60mm and provide additional tiled splash back and bench top to suit.



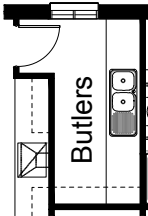
OPTION G1

Provide extension to Garage to create additional Storage area. Increases area by 4.58m². Increases width by 850mm.



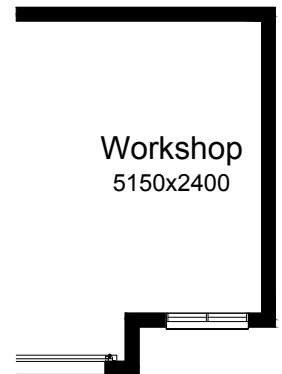
OPTION K2

Provide Butlers Option in lieu of standard WIP with additional 3no. 900mm base cupboards, 1no. 150mm base cupboard, double bowl sink and 5no. laminated wall to wall shelves with additional tiled splash back and bench top to suit in lieu of standard.



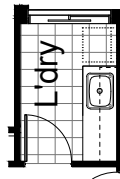
OPTION G2

Provide extension to Garage to create Workshop area including additional window to suit. Increases width by 2400mm. Increases area by 13.51m².



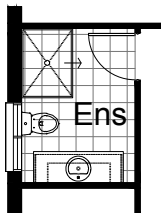
OPTION LD1

Provide Laundry upgrade with laminated insert trough, 2no. 800mm base cupboards and 2no. 800mm overhead cupboards with additional tiled splash back and bench top to suit.



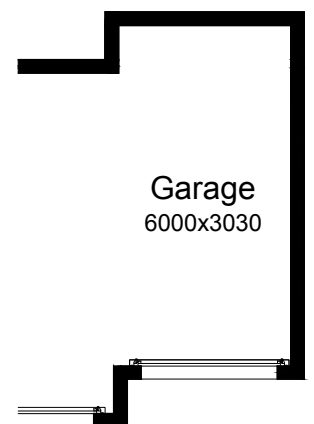
OPTION ENS1

Provide Ensuite upgrade with 900mm x 1200mm tiled shower base, 1no. 1582mm wide vanity basin in lieu of standard and 1no. 820 flush panel hinged door to suit.



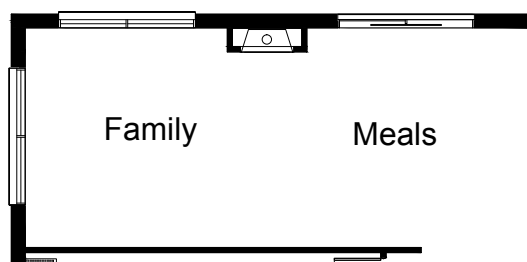
OPTION G3

Provide triple car Garage including additional roller door to front. Increases area by 20.51m². Increases width by 3030mm.



OPTION IP1

Provide Jetmaster SL-350 gas fireplace, 400mm off floor level in a 1400mm x 420mm boxed out plaster wall with a 4 sided black fascia to Family/Meals room rear wall.



Call 13 BURBANK Visit burbank.com.au

Burbank 
#noplacelikehome

*Copyright conditions. All photos and illustrations are representative only. Floor plans and specifications may be varied by Burbank without notice, the dimensions are diagrammatic only and a Building Contract with final drawings will display correct dimensions and detail. All designs are the property of Burbank and must not be used, reproduced, copied or varied, wholly or in part without written permission from an authorised Burbank representative. Copyright Burbank Australia (SA) Pty Ltd. ABN 96 165 533 406. BLD 266709.